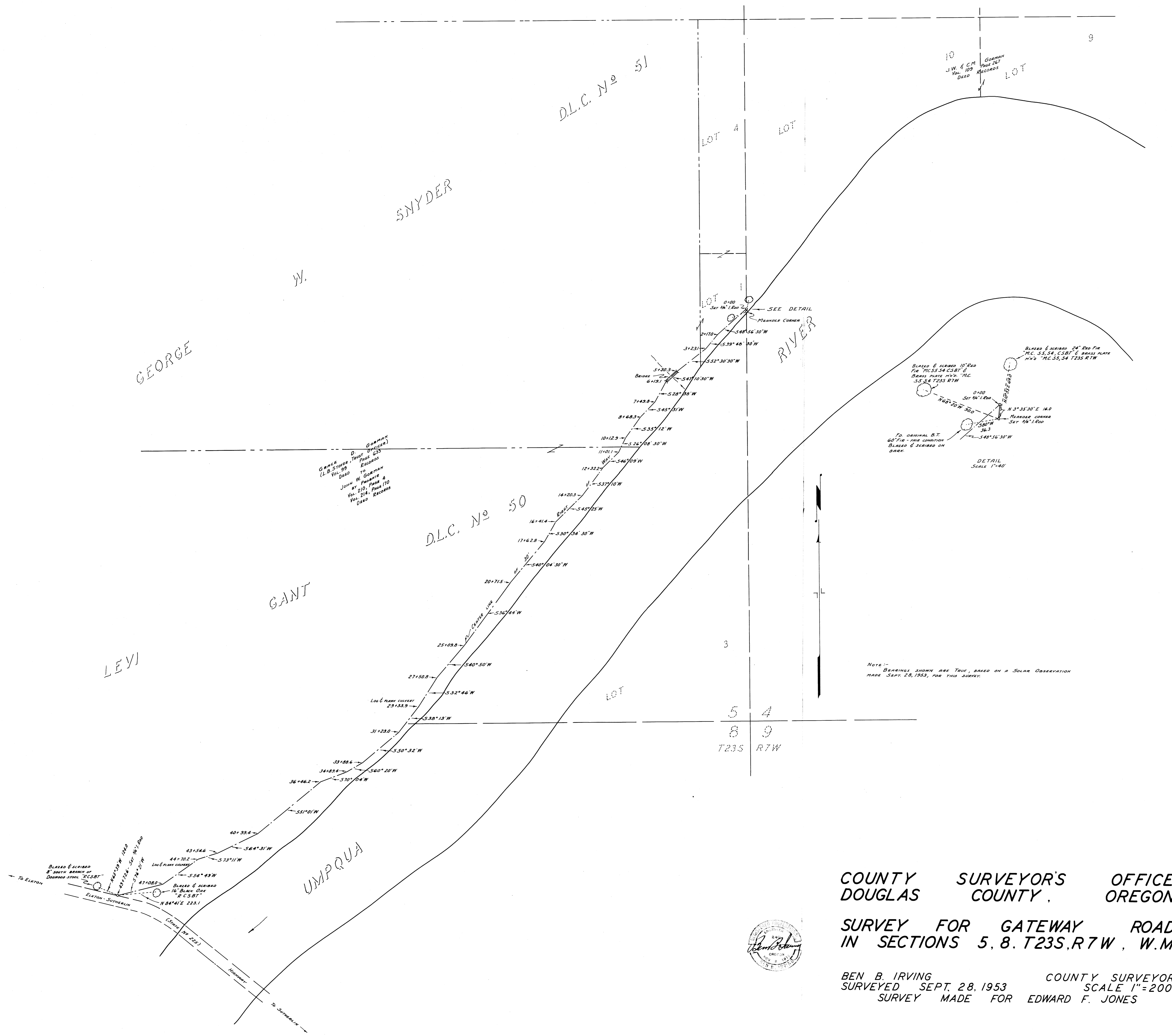


51-1-51



COUNTY SURVEYOR'S OFFICE
DOUGLAS COUNTY, OREGON

SURVEY FOR GATEWAY ROAD
IN SECTIONS 5, 8, T23S, R7W, W.M

BEN B. IRVING COUNTY SURVEYOR
SURVEYED SEPT. 28, 1953 SCALE 1"=200'
SURVEY MADE FOR EDWARD F. JONES



NOTE: -
BEARINGS SHOWN ARE TRUE, BASED ON A SOLAR OBSERVATION
MADE SEPT. 28, 1953, FOR THIS SURVEY.

51-1-51