

PLAT OF
SECTION 2, T.33S, R.5W, W.M.
AS SURVEYED BY
BETH B. IRVING, DEPUTY COUNTY SURVEYOR
DOUGLAS COUNTY, OREGON
June 1930
SCALE 1 INCH = 200 FEET.

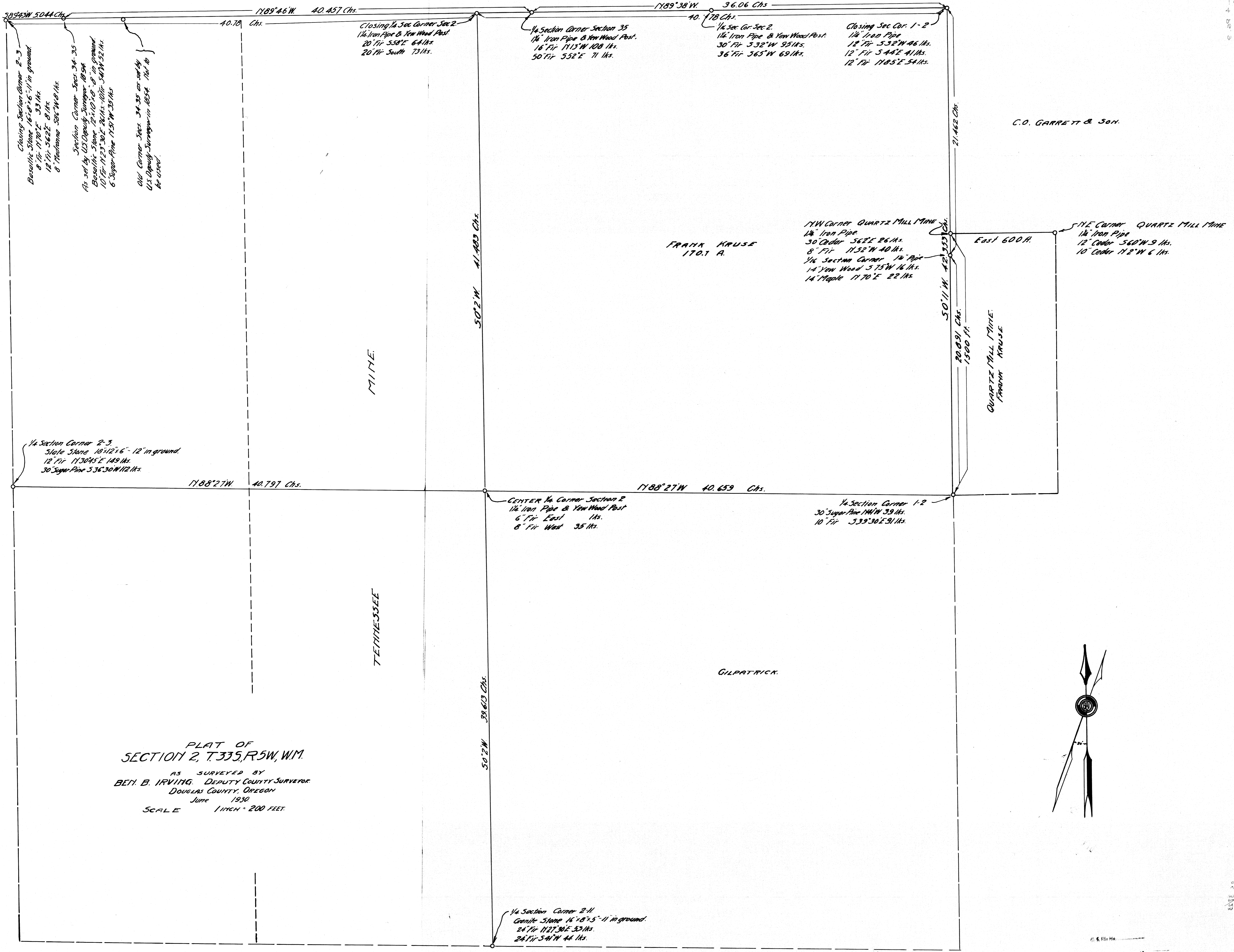
MINE.

TENTHESSEE

GILPATRICK.

C.O. GARRETT & SON.

QUARTZ MILL MINE.
FRANK KAUSE.



Closing Section Corner 2-3
Basaltic Stone 16"x6"x6" in ground.
8" Fir 117°E 53 Hrs.
18" Fir 562°E 8 Hrs.
8" Machine 586°W 8 Hrs.
Section Corner Specs 34-35
As set by US Deputy Surveyor 1854
Basaltic Stone 12"x10"x8" in ground
10" Fir 112°30'E 24 Hrs. 10" Fir 54°W 52 Hrs.
6 Sugar Pine 115°W 30 Hrs.
Old Corner Specs 34, 35 as set by
US Deputy Surveyor in 1854. Not to
be used.

Closing 1/4 Sec Corner Sec 2.
1/4" Iron Pipe & Yew Wood Post.
20" Fir 538°E 64 Hrs.
20" Fir South 73 Hrs.

1/4 Section Corner Section 35
1/4" Iron Pipe & Yew Wood Post.
16" Fir 115°W 108 Hrs.
50" Fir 552°E 71 Hrs.

1/4 Sec Cor. Sec 2.
1/4" Iron Pipe & Yew Wood Post.
30" Fir 532°W 95 Hrs.
36" Fir 565°W 69 Hrs.

Closing Sec Cor. 1-2
1/4" Iron Pipe
12" Fir 532°W 46 Hrs.
12" Fir 544°E 41 Hrs.
12" Fir 1185°E 54 Hrs.

1/4 Section Corner 2-3
Slate Stone 18"x12"x6"-12" in ground.
12" Fir 1130°E 149 Hrs.
30" Sugar Pine 536°30'W 112 Hrs.

CENTER 1/4 Corner Section 2
1/4" Iron Pipe & Yew Wood Post.
6" Fir East 1 Hrs.
8" Fir West 35 Hrs.

1/4 Section Corner 1-2
30" Sugar Pine 141°W 39 Hrs.
10" Fir 539°30'E 91 Hrs.

1/4 W Corner QUARTZ MILL MINE
1/4" Iron Pipe
30" Cedar 562°E 86 Hrs.
8" Fir 1152°W 40 Hrs.
1/4 Section Corner 1/4" Pipe
14" Yew Wood 575°W 16 Hrs.
14" Maple 1170°E 22 Hrs.

1/4 E Corner QUARTZ MILL MINE
1/4" Iron Pipe
12" Cedar 560°W 9 Hrs.
10" Cedar 112°W 6 Hrs.

