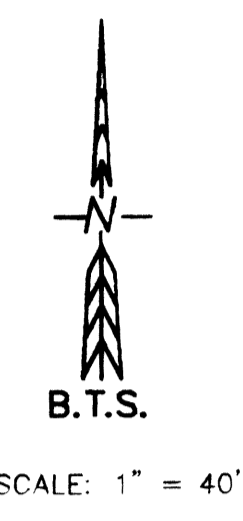
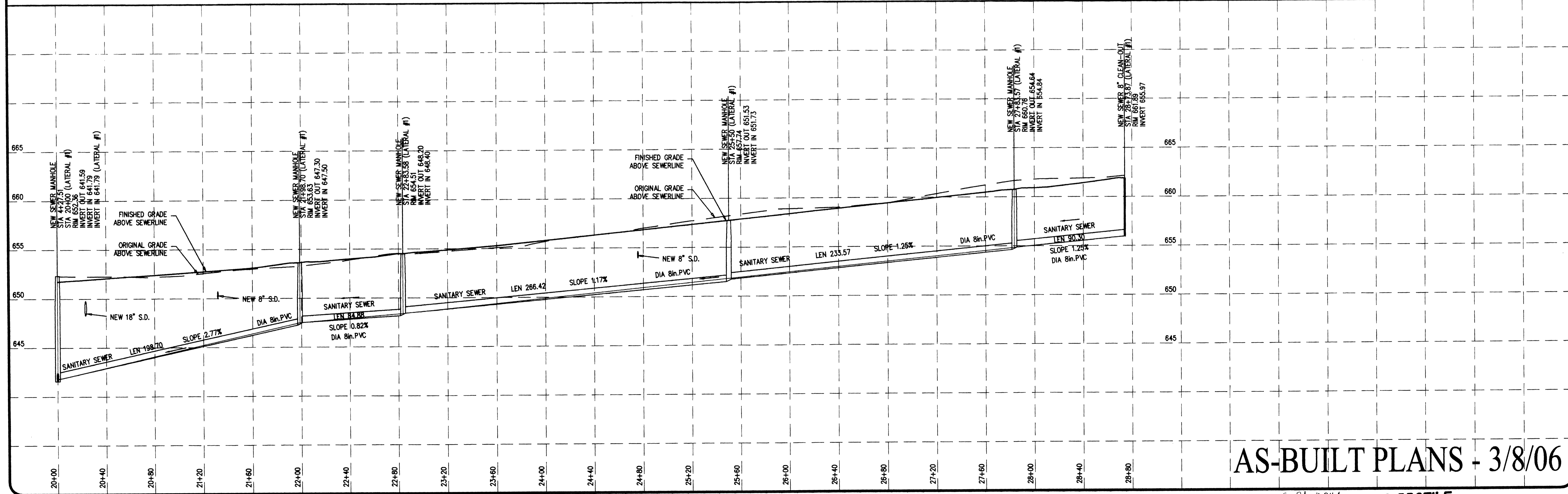


FILED  
 Date: 11/17/2006 By: JJP  
 This survey consists of:  
 Map:  
 Narrative:  
 Corner Rpt:  
 DOUGLAS COUNTY  
 SURVEYOR



STULL ENTERPRISES  
 ENGINEERING & SURVEYING, INC.  
 431 S.E. MAIN ST., ROSELAND, OR 97068  
 PHONE (503) 675-9966 FAX (503) 675-9105

GENTRY ESTATES  
 SEWER PLAN & PROFILE



AS-BUILT PLANS - 3/8/06

CO. RD. #911A SEWER PLAN & PROFILE

PROJECT: \_\_\_\_\_  
 SHEET TITLE: \_\_\_\_\_

DATE:	AUGUST 10, 2005
REV. #1:	SEPT. 1, 2005
REV. #2:	-
REV. #3:	-
REV. #4:	-
REV. #5:	-



PROJ. #05-036  
 SHEET NO.

SS2 of 2

R911SEW2