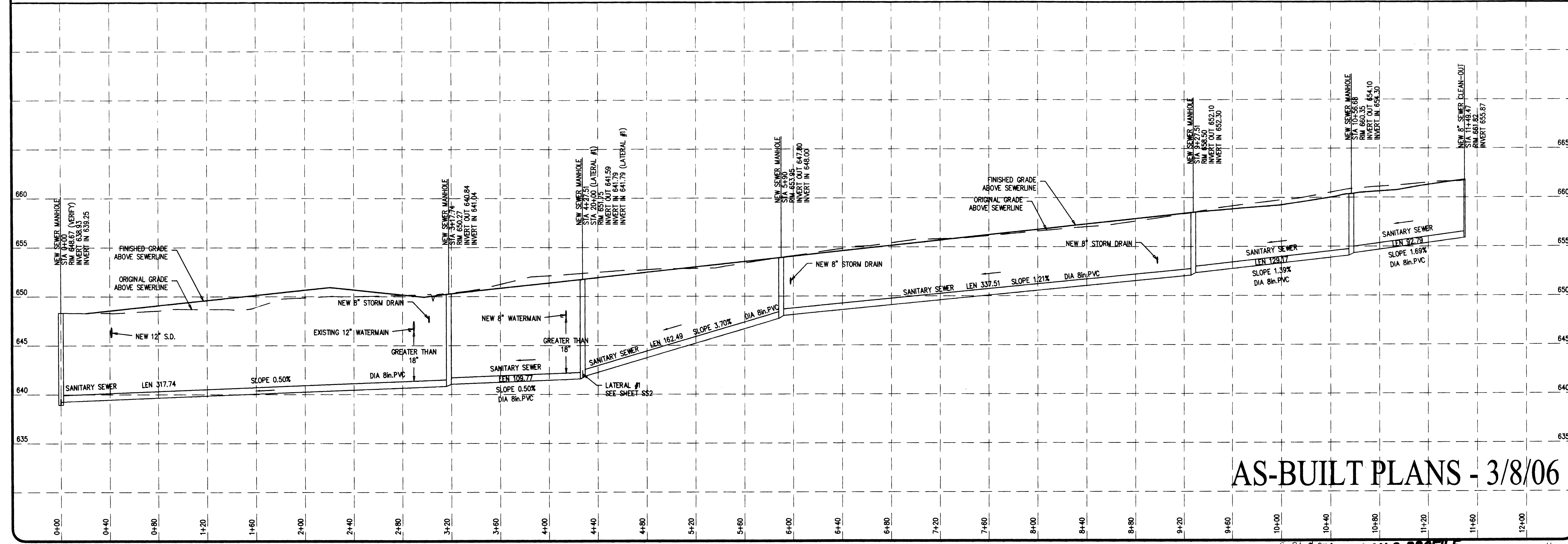


FILED
 Date: 12/27/2006 By: JLP
 This survey consists of:
 Map:
 Narrative:
 Corner Rpt:
 DOUGLAS COUNTY SURVEYOR

B.T.S.
 SCALE: 1" = 40'

OWNER: STULL ENTERPRISES
 ENGINEERING & SURVEYING, INC.
 431 S.E. MAIN ST., ROSSBURG, OR 97130
 PHONE (541) 673-9966 FAX (541) 673-0105
BTS

PROJECT: GENTRY ESTATES
 SHEET TITLE: SEWER PLAN & PROFILE



PROJECT: GENTRY ESTATES
 SHEET TITLE: SEWER PLAN & PROFILE
 DATE: AUGUST 10, 2005
 REV. #1: SEPT. 1, 2005
 REV. #2: -
 REV. #3: -
 REV. #4: -
 REV. #5: -

REGISTERED PROFESSIONAL ENGINEER
 DEREK M. MILLER
 OREGON
 JULY 9, 2001
 EXPIRATION DATE: 12/31/06

AS-BUILT PLANS - 3/8/06

PROJ. #05-036
 SHEET NO.
 SS1 of 2