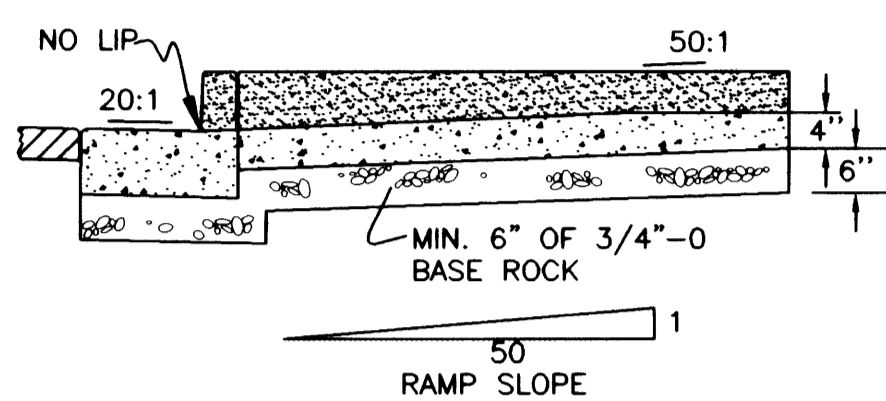
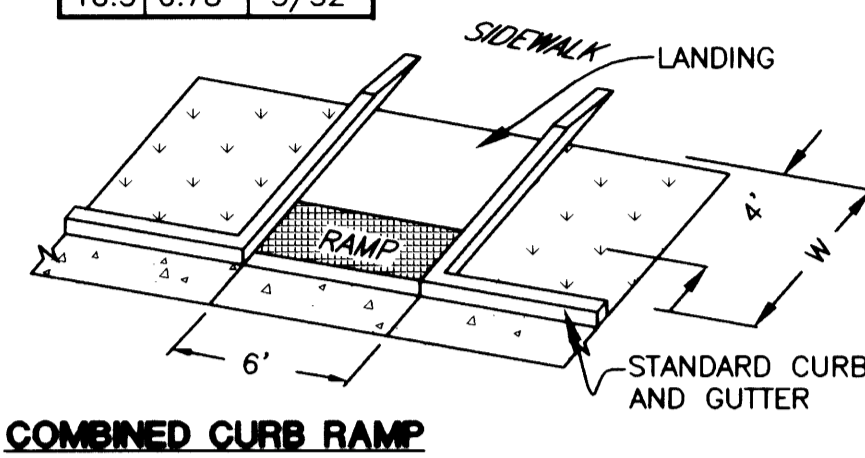


TYPICAL SECTION THROUGH COMBINED CURB RAMP

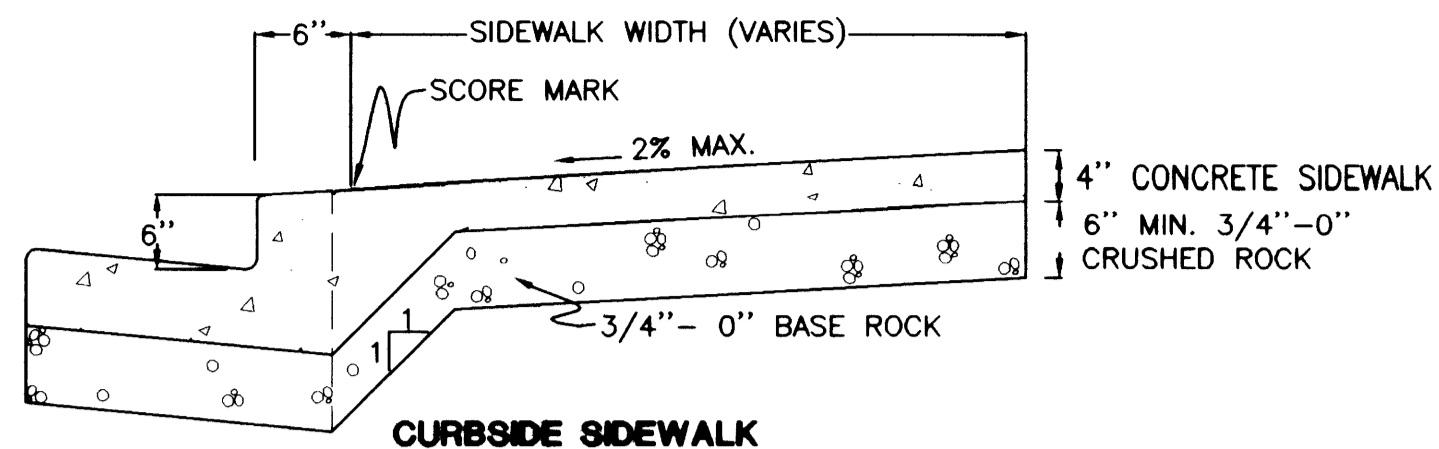


TYPICAL SECTION THROUGH PARALLEL CURB RAMP

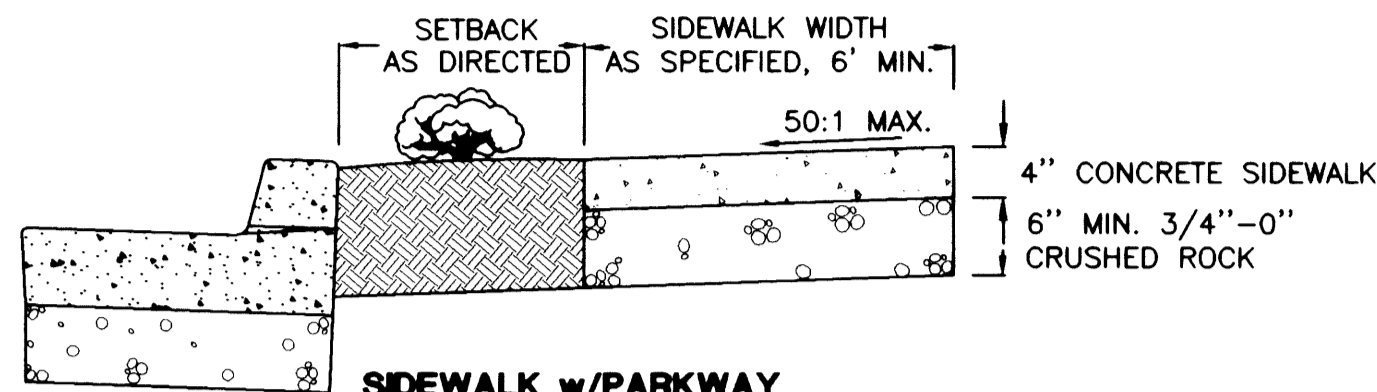
W	L	H
5'	4.36'	7/16"
5.5'	4.05'	13/32"
6'	3.73'	3/8"
6.5'	3.41'	11/32"
7'	3.10'	5/16"
7.5'	2.78'	9/32"
8'	2.46'	1/4"
8.5'	2.15'	7/32"
9'	1.83'	3/16"
9.5'	1.51'	5/32"
10'	1.20'	1/8"
10.5'	0.78'	3/32"



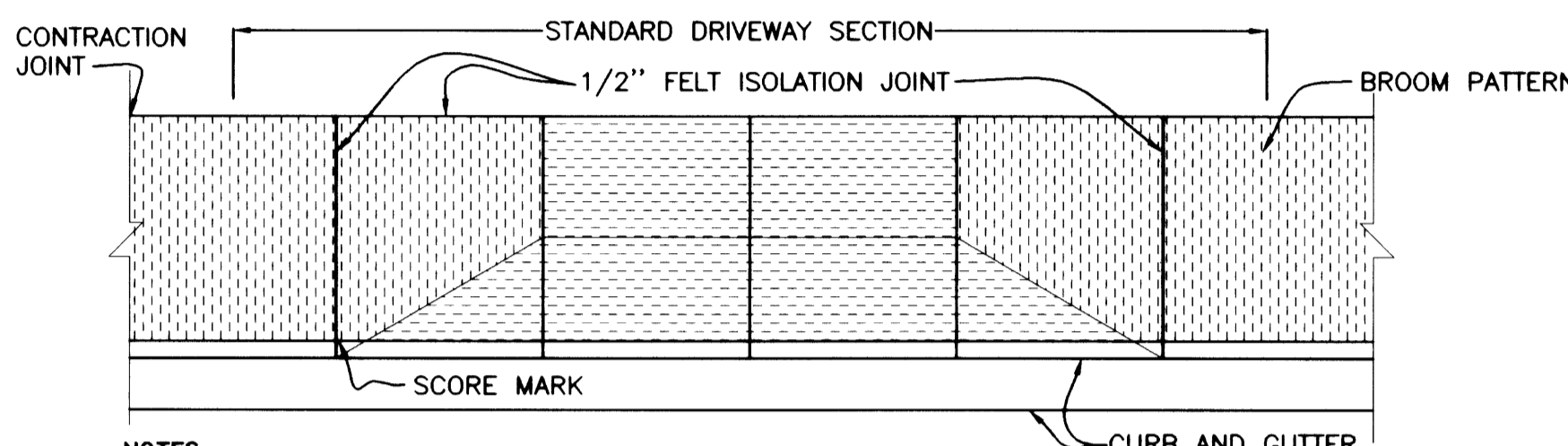
COMBINED CURB RAMP



CURB SIDE SIDEWALK



SIDEWALK w/PARKWAY



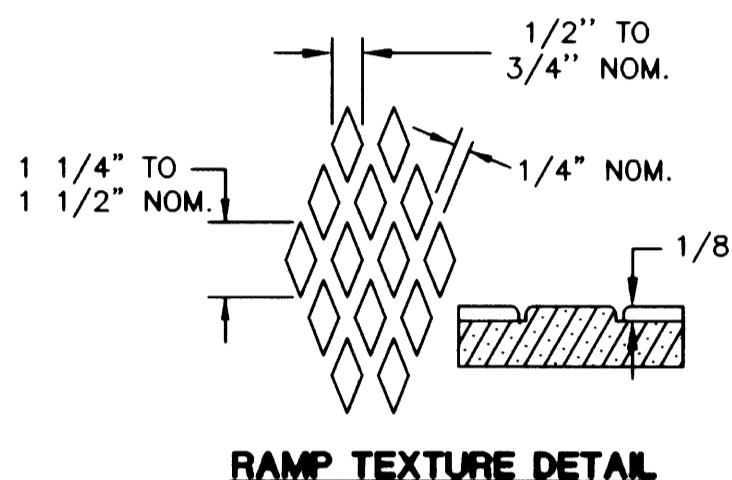
- NOTES:
- CONCRETE USED IN SIDEWALKS SHALL HAVE A 28 DAY ULTIMATE COMPRESSIVE STRENGTH OF 3,300 PSI.
  - ALL RADII SHALL BE 3/4" (20mm) UNLESS OTHERWISE SHOWN.
  - ISOLATION JOINTS (FELT EXPANSION JOINTS) SHALL BE PLACED AT 45' INTERVALS.
  - CONTRACTION JOINTS SHALL BE PLACED AT 15' (4.5m) INTERVALS AND SHALL EXTEND THROUGH THE CURB OR CURB & GUTTER EVERY OTHER ONE.
  - 3" (7mm) DIAMETER WEEP HOLES ARE REQUIRED FROM BACK OF SIDEWALK TO FACE OF CURB AT ALL DOWN SPOUTS, DRAINS OR TWO PER LOT. A CONTRACTION JOINT SHALL BE PLACED OVER AND ALONG EACH WEEP HOLE.
  - SIDEWALK ACCESS RAMP ARE REQUIRED AT ALL STREET CORNERS AND AS OTHERWISE DIRECTED.
- MINIMUM CURB RETURN RADII  
RESIDENTIAL = 25' (7.6m)  
COMMERCIAL = 40' (12.2m)

SIDEWALK STANDARDS

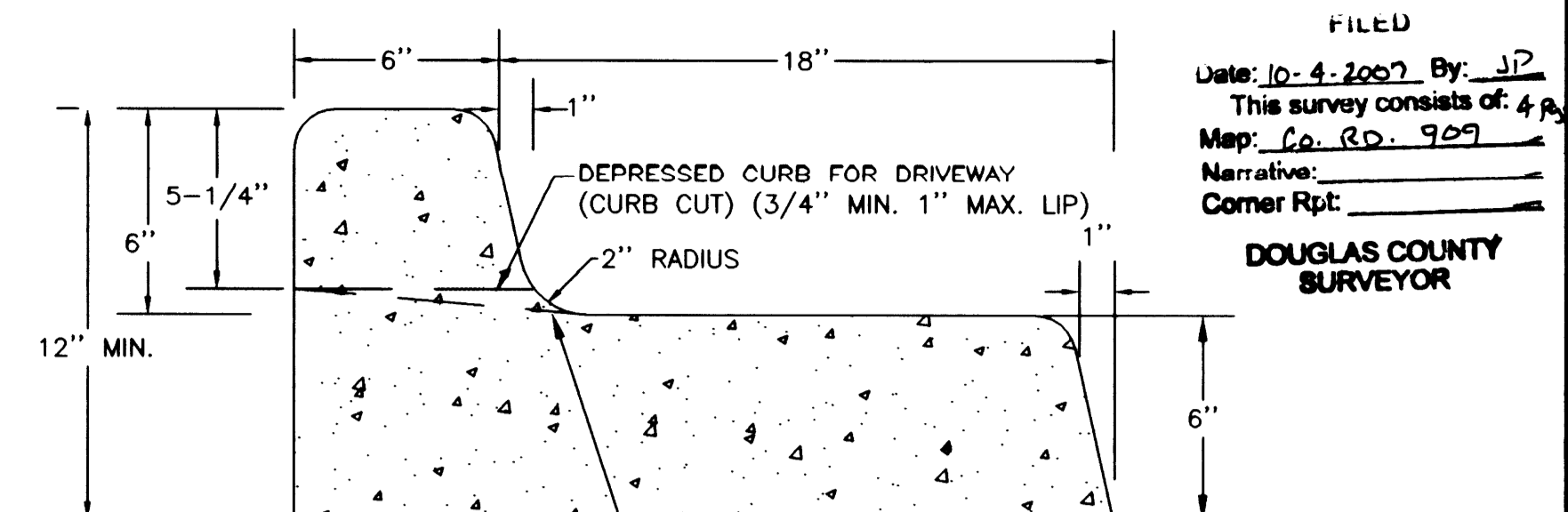
NOTES:

- THE "AMERICANS WITH DISABILITIES ACT" (ADA) REQUIRES THAT ACCESS RAMP TO SIDEWALKS CONFORM TO ALL FEDERAL GUIDELINES. EXCEPTIONS TO THE REQUIREMENTS IN THIS DRAWING MUST BE APPROVED BY PUBLIC WORKS DIRECTOR AND MUST COMPLY WITH ADA.
- LANDINGS SHALL BE PLACED AT THE TOP OF EACH RAMP. LANDING SLOPES SHALL NOT EXCEED 50:1 IN ANY DIRECTION.
- MINIMUM LANDING DIMENSIONS SHALL BE 4' x 4'.
- RAMP SURFACE SHALL BE TEXTURED WITH RAISED DIAMOND TEXTURE. TEXTURING SHALL BE DONE WITH AN EXPANDED METAL GRATE STAMPED INTO THE CONCRETE.
- CONCRETE STRENGTH SHALL BE 3300 PSI.

SIDEWALK ACCESS RAMP  
ADA STANDARD-SINGLE MIDBLOCK RAMP



RAMP TEXTURE DETAIL

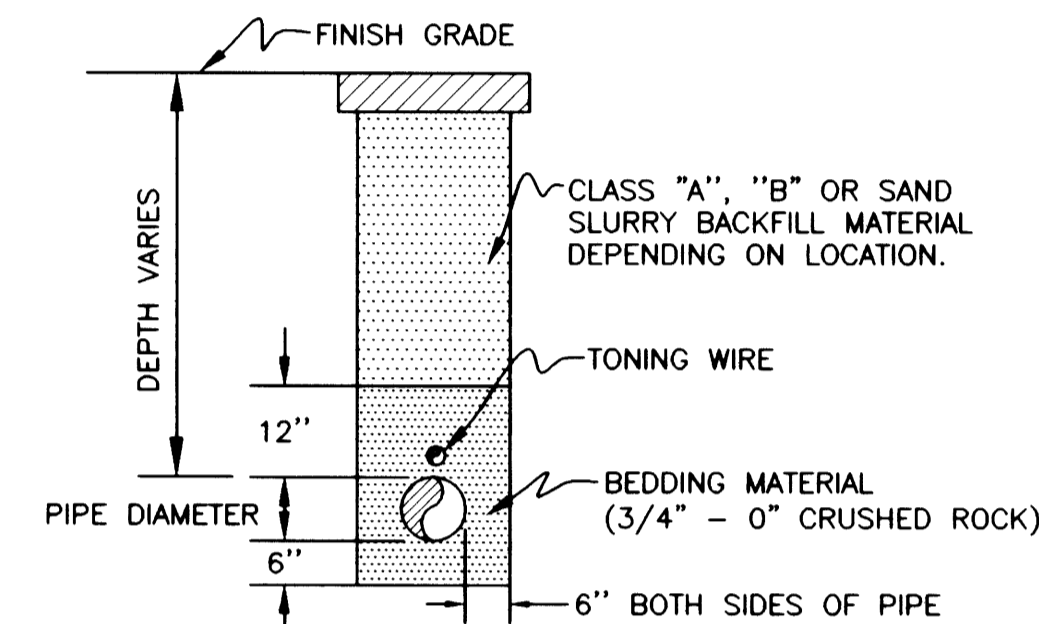


\*8.33% (1:12) MAXIMUM SLOPE ALLOWED BY AMERICANS w/DISABILITIES ACT (ADA)  
DEPRESSED CURB FOR ACCESS RAMP (SAR) RAMP GRADE = \*8.33% (1:12) MAX. SLOPE (NO LIP)

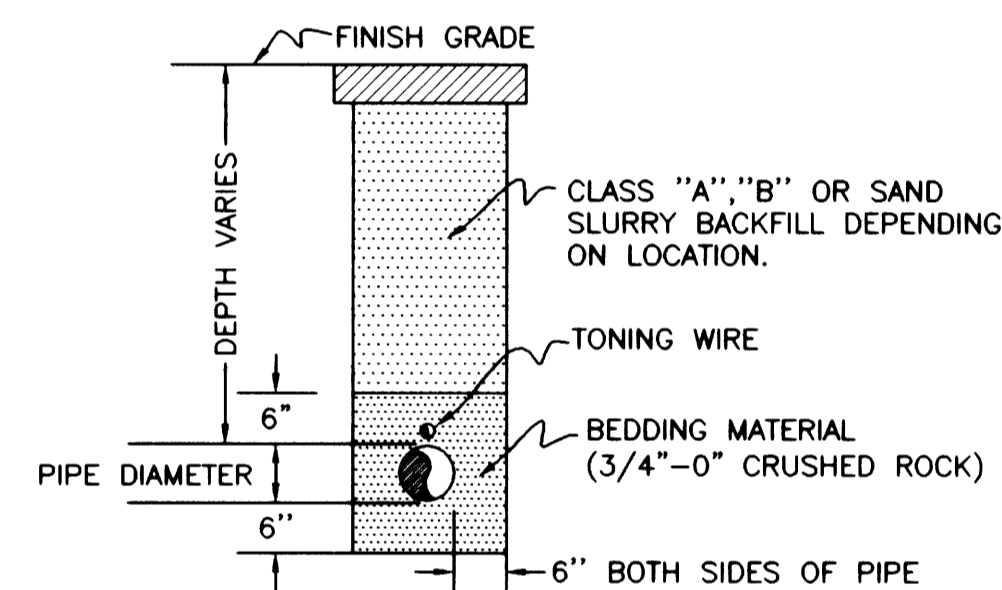
NOTES:

- ALL RADII SHALL BE 3/4" (20MM) UNLESS OTHERWISE SHOWN
- ALL CONCRETE SHALL MEET STANDARD CONCRETE SPECS. [3300PSI (22.75MPA)]
- ALLOWABLE TOLERANCE FOR DEVIATION FROM TANGENT OR STRAIGHT LINES IN NON-CURVED SECTIONS, SHALL NOT EXCEED 2MM/1M (1/4" PER 12') [WHEN A 2 METER STRAIGHT EDGE IS LAID UPON ANY SURFACE NOT IN A CURVE OR A GRADE CHANGE THE MAXIMUM GAP SHALL BE 4MM]

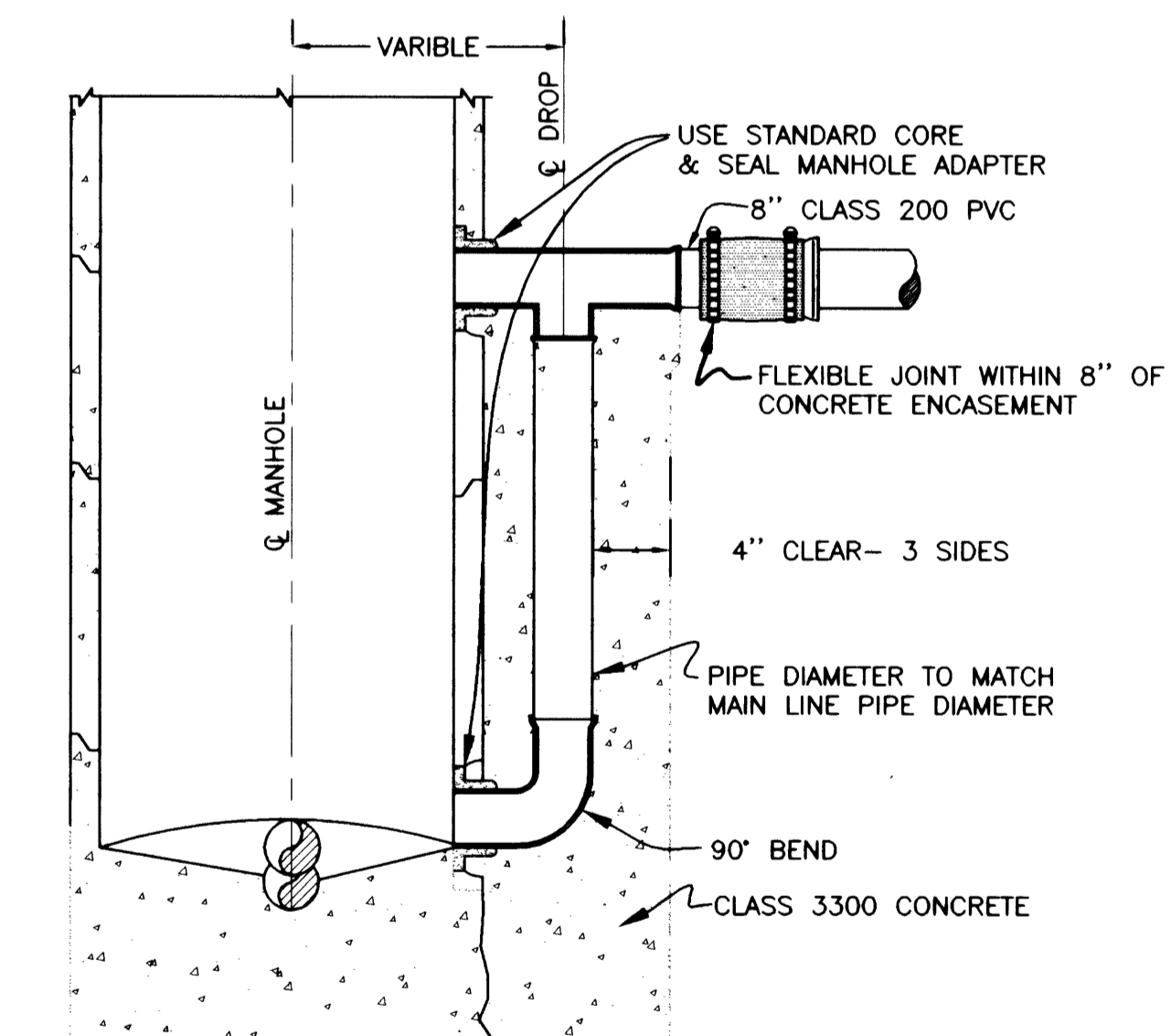
TYPICAL MONOLITHIC CURB AND GUTTER



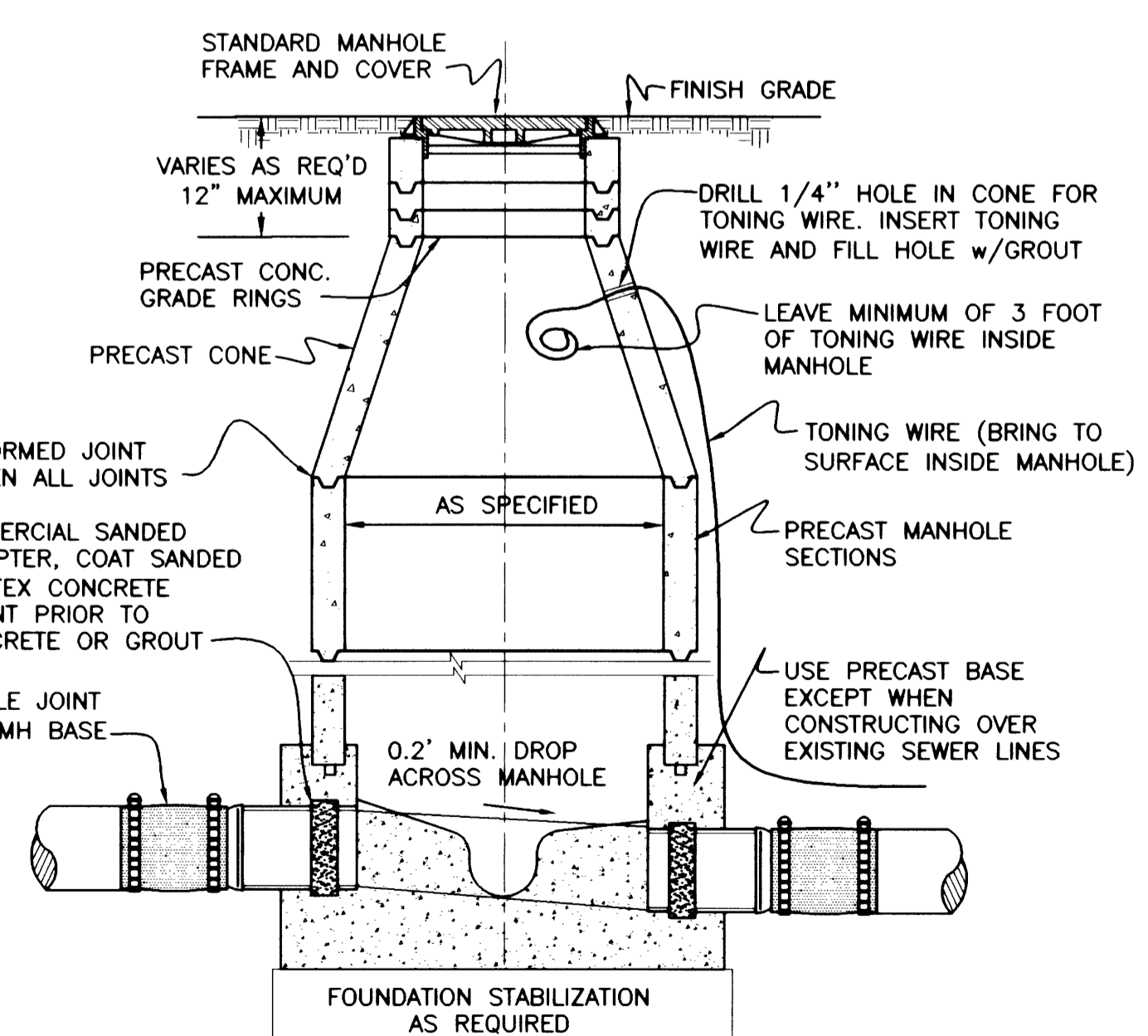
TYPICAL SEWER MAINLINE TRENCH DETAIL



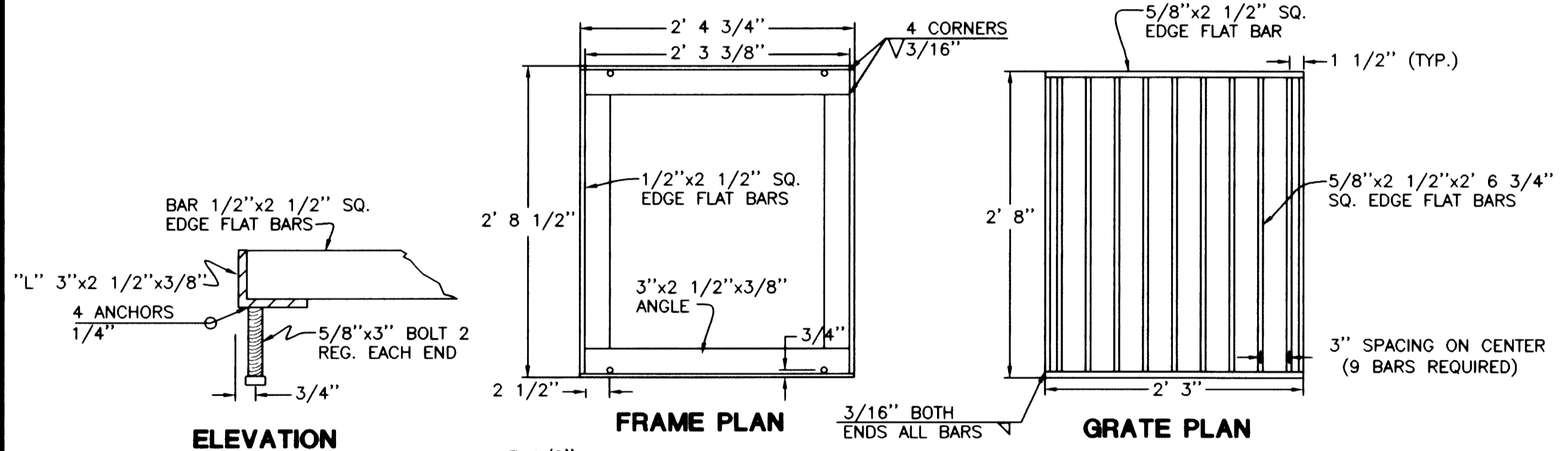
TYPICAL STORM LINE TRENCH DETAIL



TYPICAL OUTSIDE DROP MANHOLE DETAIL



TYPICAL SANITARY MANHOLE DETAIL  
(CAST IN PLACE)

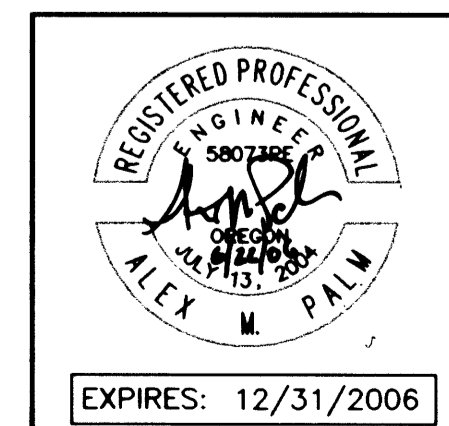


SECTION A-A FOR APPROX. DIMENSION (X) SEE STORM DRAIN PLANS

DITCH INTERCEPTOR (TYPE A)

**i.e.** ENGINEERING  
741 SE Jackson Street  
Roseburg, Oregon 97470  
PHONE (541) 673-0166  
FAX (541) 440-9392  
email@ieengineering.com

Rev.	Date	Dwg	Description
1	12/15/04	ANV	RUSA COMMENTS
2	12/17/04	ANV	D.C. REVIEW COMMENTS
3	1/17/05	ANV	ROSEBURG REVIEW COMMENTS
4	3/02/05	BWC	RE-ALIGNMENT OF ROAD
5	6/19/06	JDL	AS-BUILTS



EXPIRES: 12/31/2006  
Co. Rd. # 909 MP 0.34 - 0.96

CO. RD. #909 DETAILS

DO NOT DUPLICATE

R909DET1