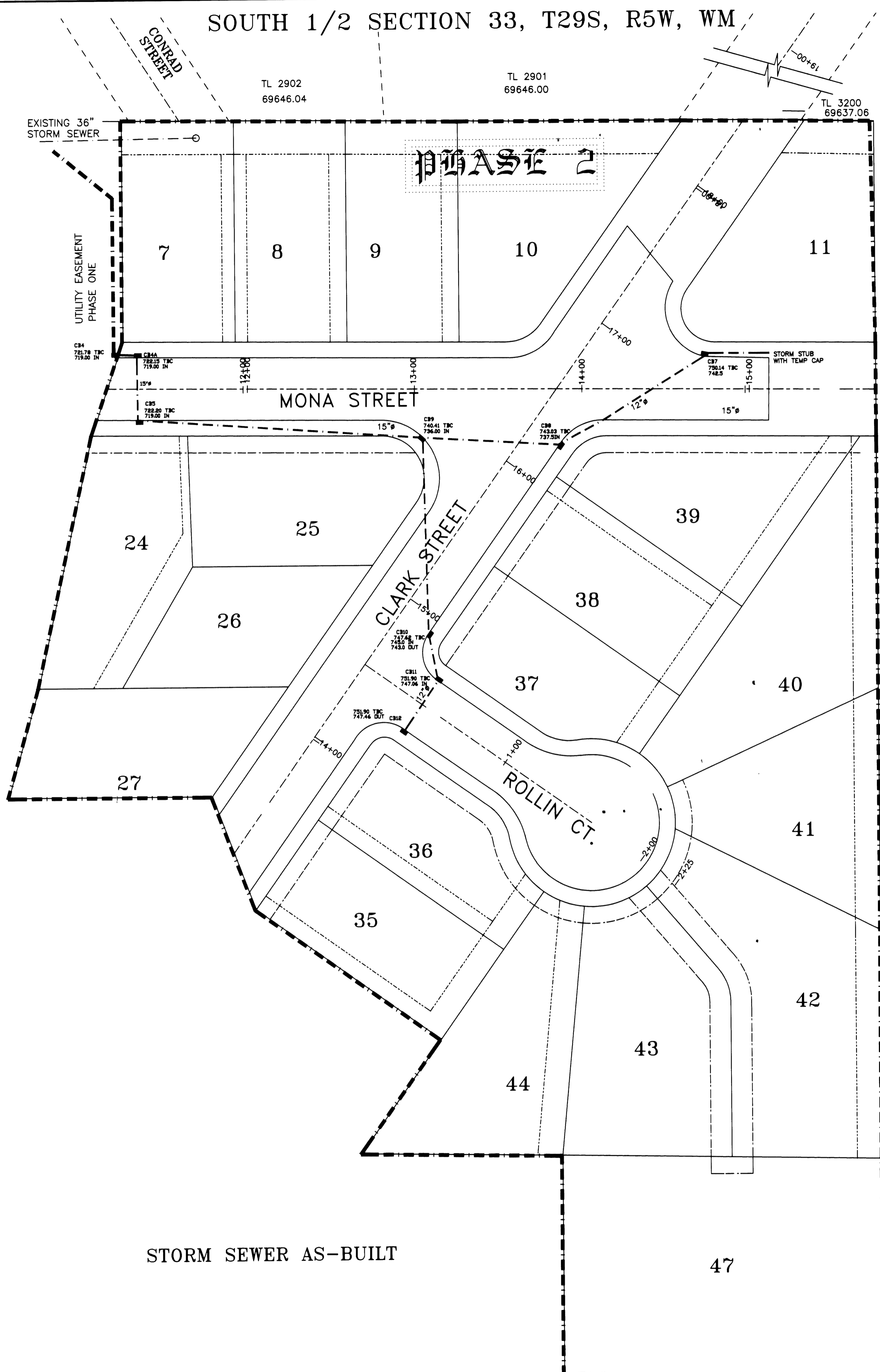
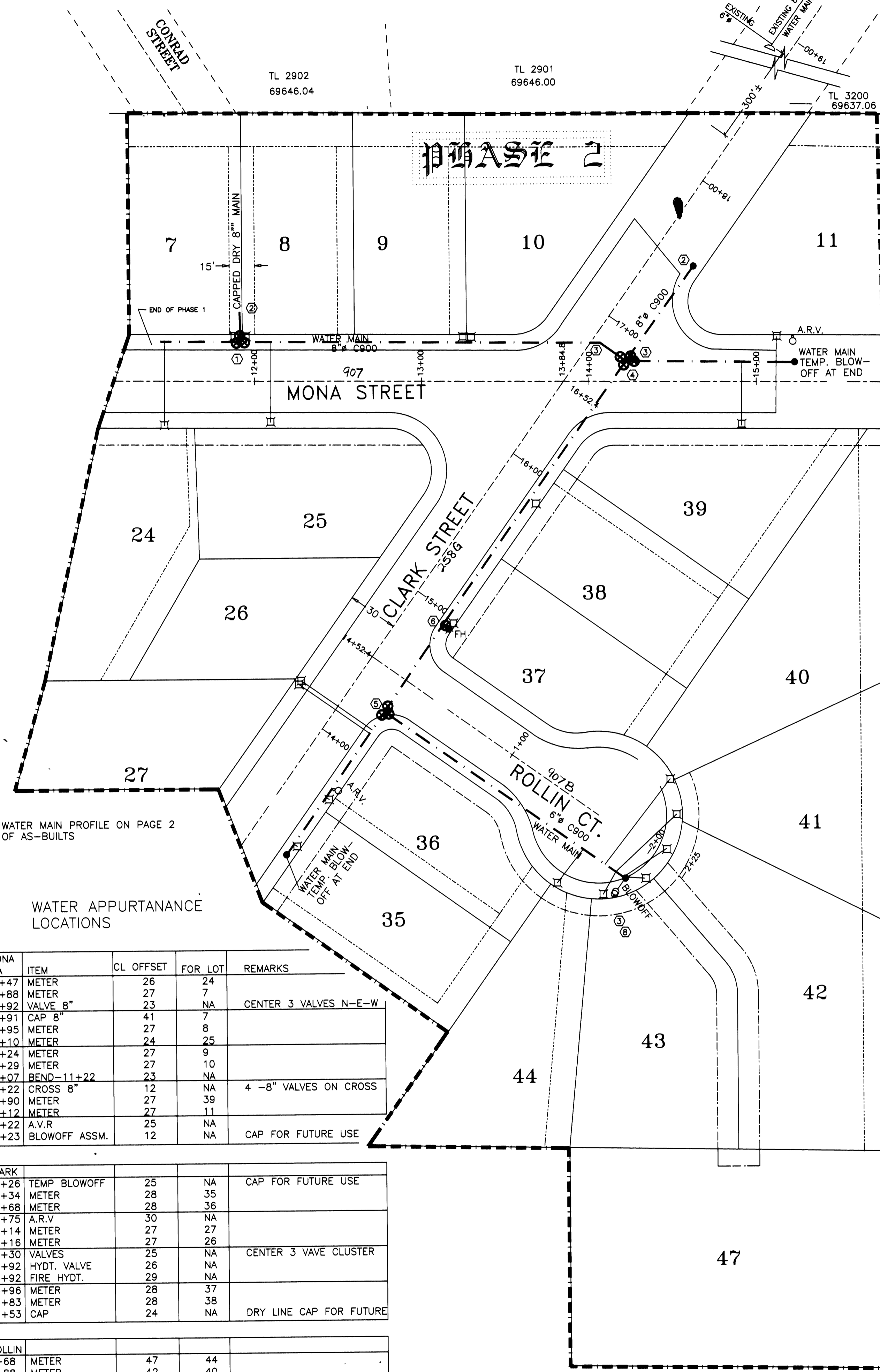


SOUTH 1/2 SECTION 33, T29S, R5W, WM



STORM SEWER AS-BUILT



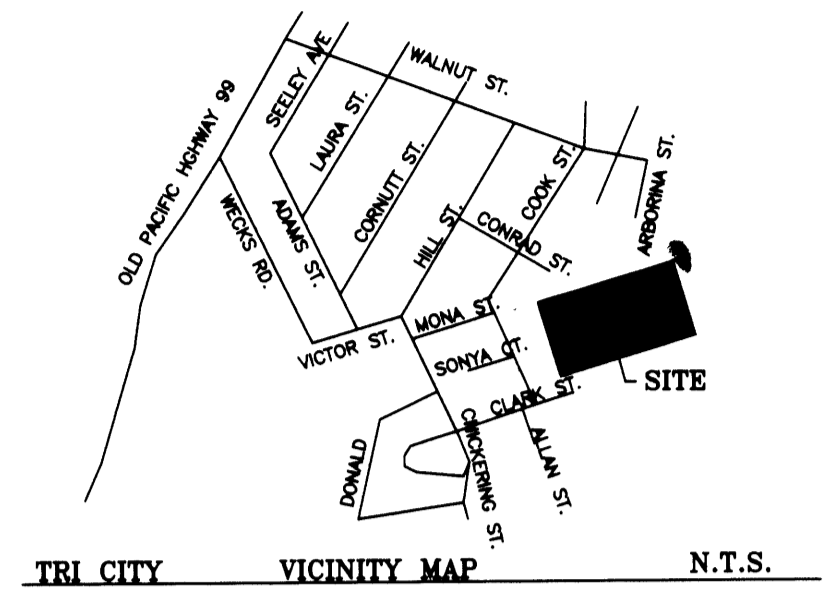
WATER AS-BUILT PHASE 2

MONA STA	ITEM	CL OFFSET	FOR LOT	REMARKS
11+47	METER	28	24	
11+88	METER	27	7	
11+92	VALVE 8"	23	NA	CENTER 3 VALVES N-E-W
11+91	CAP 8"	41	7	
11+95	METER	27	8	
12+10	METER	24	25	
13+24	METER	27	9	
13+29	METER	27	10	
14+07	BEND-11+22	23	NA	
14+22	CROSS 8"	12	NA	4 -8" VALVES ON CROSS
14+90	METER	27	39	
15+12	METER	27	11	
15+22	A.V.R	25	NA	
15+23	BLOWOFF ASSM.	12	NA	CAP FOR FUTURE USE

CLARK	ITEM	CL OFFSET	FOR LOT	REMARKS
13+26	TEMP BLOWOFF	25	NA	CAP FOR FUTURE USE
13+34	METER	28	35	
13+68	METER	28	36	
13+75	A.R.V	30	NA	
14+14	METER	27	27	
14+16	METER	27	26	
14+30	VALVES	25	NA	CENTER 3 VAVE CLUSTER
14+92	HYDT. VALVE	26	NA	
14+92	FIRE HYDT.	29	NA	
14+96	METER	28	37	
15+83	METER	28	38	
17+53	CAP	24	NA	DRY LINE CAP FOR FUTURE

ROLLIN	ITEM	CL OFFSET	FOR LOT	REMARKS
1+68	METER	47	44	
1+98	METER	42	40	
1+94	METER	37	43	
1+99	BLOWOFF VLV	22	NA	END OF MAIN
1+99	A.R.V.	32	NA	
2+03	METER	27	41	
2+10	METER	15 RT.	47	
2+10	METER	7 LT.	42	

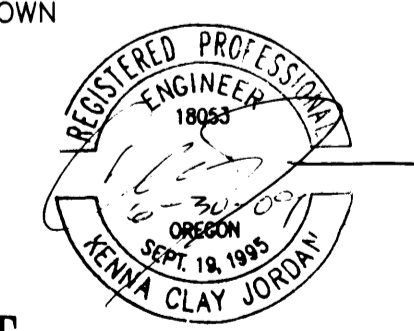
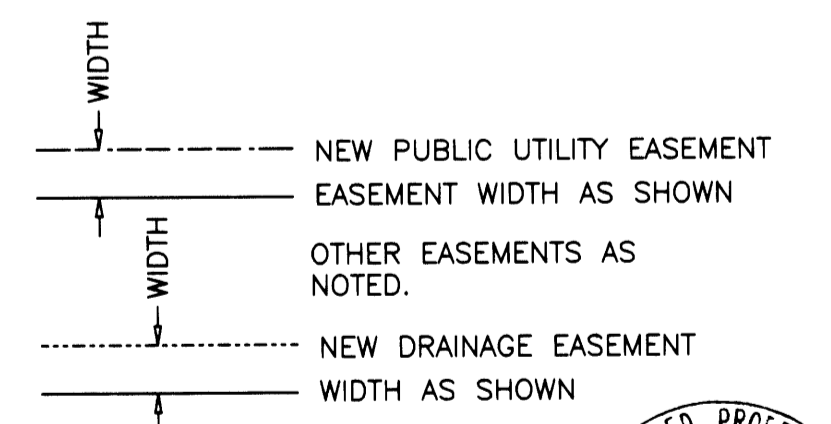
FILED
Date: 1-15-2009 By: JC
This survey consists of:
Map: Co. 022-907, 907B
Narrative: 2536
Corner Rpt:
DOUGLAS COUNTY SURVEYOR



WATER NOTES:
ALL VALVES AND FITTINGS ARE MUXMJ. ALL MJ HAVE MEG-A-LUG JOINT RESTRAINTS.
VALVES ARE INSTALLED AS CLOSE AS POSSIBLE TO CROSS AND TEE FITTINGS USING SHORT SECTION OF PIPE APPROXIMATELY 18" IN LENGTH.

- ① 8"X8"X8" TEE WITH VALVES ON EACH RUN
- ② 8" DRY LINE, CAPPED FOR FUTURE USE
- ③ 11.25' AND 22.5' MUXMJ 8" BENDS
- ④ ALL 8" CROSS WITH VALVES ON EACH RUN
- ⑤ 8"X8"X6" TEE WITH VALVES ON EACH RUN
- ⑥ 8"X8"X6" TEE FOR FIRE HYDRANT WITH VALVE 18" FROM FIRE HYDRANT.

- WATER LEGEND:
- SINGLE WATER METER SEE DETAIL NO. W-600 (NOTE: Existing Phase One may be double meters)
 - ⊕ FIRE HYDRANT, SEE DESIGN DETAIL W-300
 - ⊗ GATE VALVE WITH TYP. "WATER LINE CONNECTION" AND ITEM NUMBER.
 - AIR RELIEF ASSEMBLY
 - BLOWOFF ASSEMBLY
- STORM LEGEND:
- DOUGLAS COUNTY CATCH BASIN TYPE A, DRAWING S-24 OR EQUAL.



AS-BUILT

JORDAN ENGINEERING
460 JORDAN LANE
ROSEBURG, OREGON 97470
(541) 673-1931

SCALE: 1"=40'
DATE: 4-12-99
DRAWN BY: K.C.J.
AS-BUILT 4-23-08

ROLAND THEISS
P.O. BOX 824
MYRTLE CREEK, OR 97457
(541) 863-3134

VILLAGE VIEW SUBDIVISION ZONE: R-1
PHASE 2
20 LOTS PHASE 2
DRAWING NUMBER: 1 OF 2

Co. Rd. # 907, 258G, 907B MP 0.22-0.31, 0.25-0.34, 0.00-0.03

R907SSWA