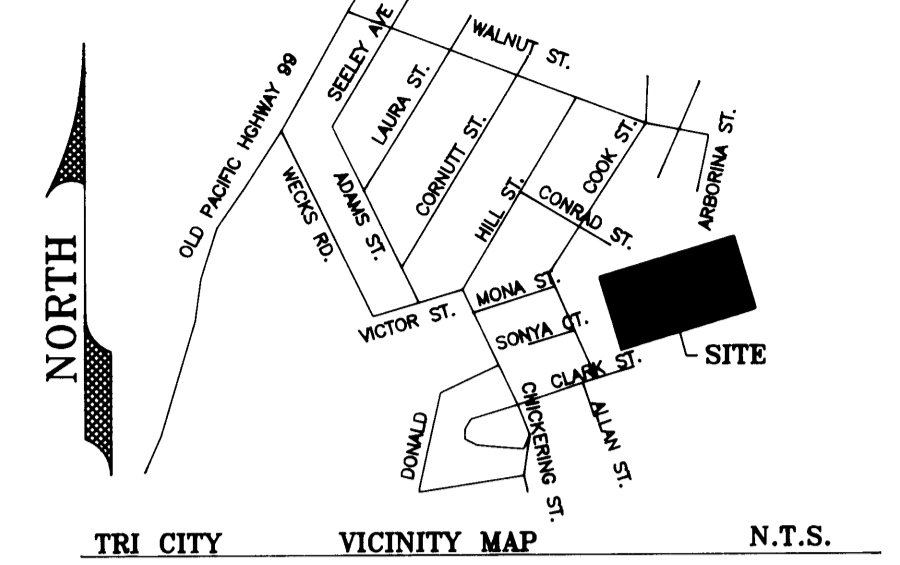
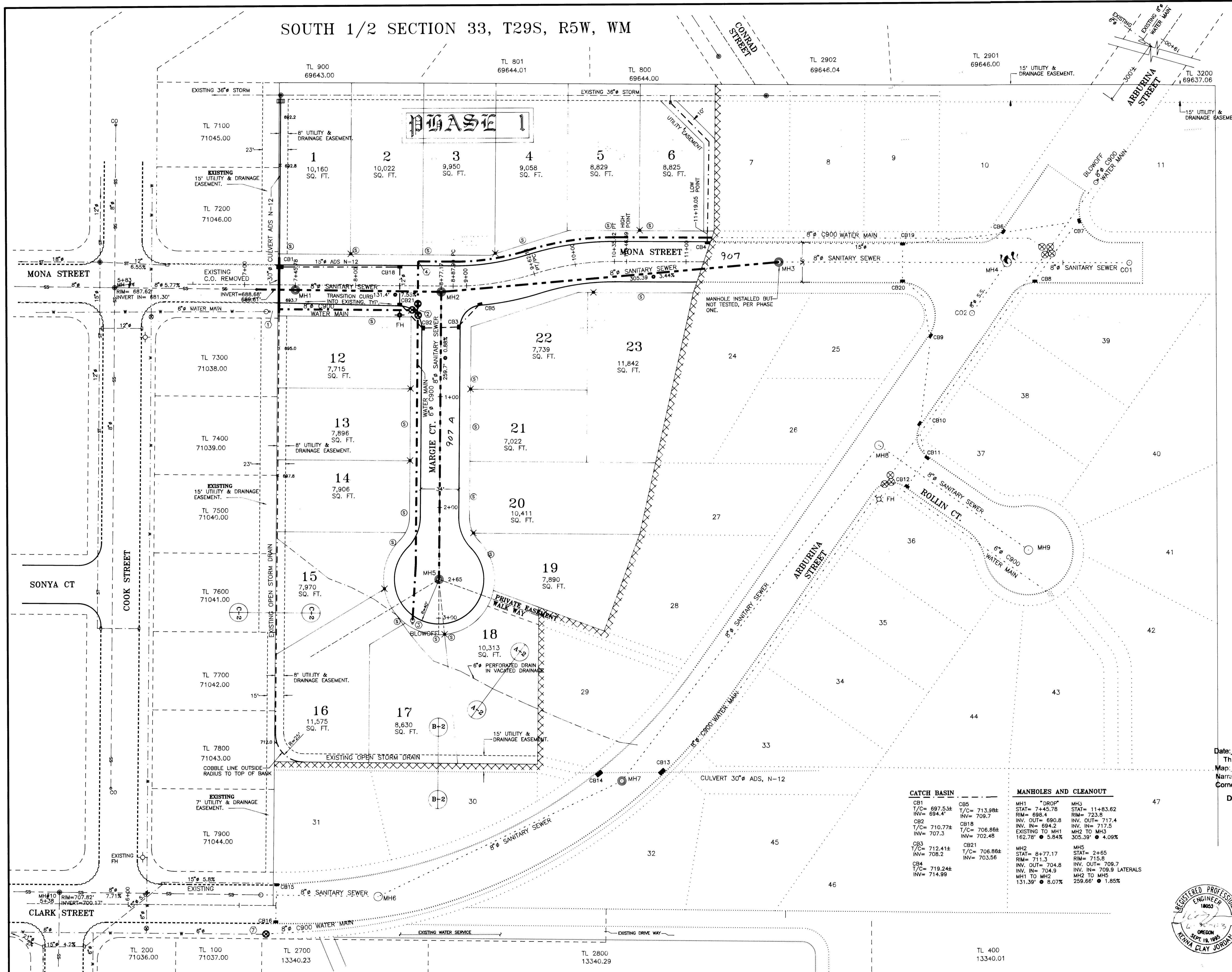
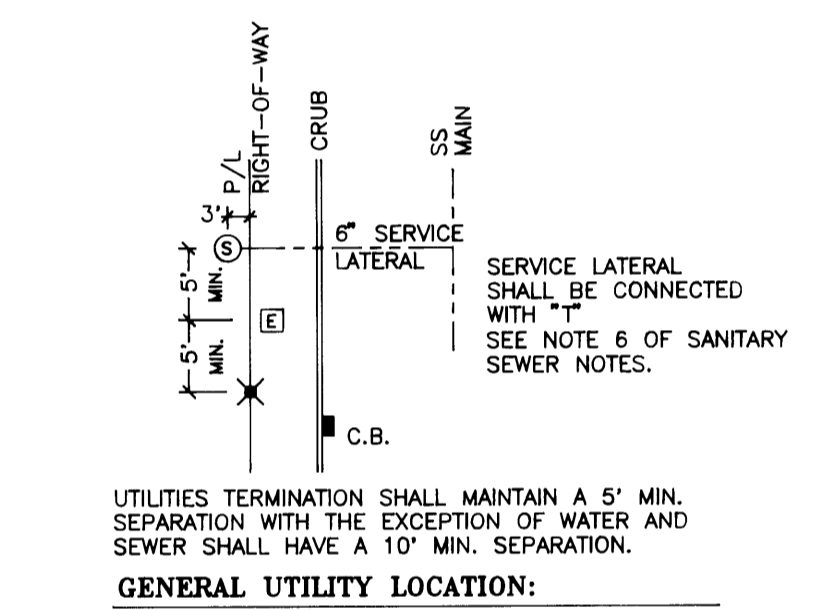


SOUTH 1/2 SECTION 33, T29S, R5W, WM



- LOT FILL:**
1. ALL DELETERIOUS MATERIAL SHALL BE REMOVED FROM FILL ZONE.
 2. COMPACTION SHALL BE 95% PER AASHTO T-99. SEE DETAIL (LOT FILL TYP.) PAGE 3 OF 3.
 3. COMPACTION SHALL BE CONFIRMED BY A REGISTERED ENGINEER.
 4. FILL SHALL BE NON-DELETERIOUS COMPACTABLE MATERIAL.

- WATER LINE CONNECTION:**
1. FIELD VERIFY EXISTING, INSTALL 6" TO 8" REDUCER
 - A) FLG. TEE 8X8X8
 - B) 2-FLG X MJ 8" GATE VALVES
 - C) 1-FLG X MJ 6" GATE VALVE
 - D) SEE THRUST BLOCKS DETAIL
 3. SEE TYPICAL 2" BLOWOFF ASSEMBLY DETAIL
 4. TYPICAL 8" MJ X MJ WITH THRUST BLOCK PER THRUST BLOCK DETAIL PAGE 2
 5. A) FLG. CROSS 8X8X8
 - B) 4-FLG X MJ 8" GATE VALVES
 - C) BLIND FLANGE G.V. FOR FUTURE EXTENSION OF MONA ST. EAST.
 - D) SEE THRUST BLOCKS DETAIL.
 6. A) FLG. TEE 8X8X8
 - B) 2-FLG X MJ 8" GATE VALVES
 - C) 1-FLG X MJ 6" GATE VALVE
 - D) SEE THRUST BLOCKS DETAIL
 7. A) FIELD VERIFY EXISTING
 - B) 6" TO 8" MJ X FLG. REDUCER
 - C) 1-FLG X MJ 8" GATE VALVE
 - D) OPTIONAL MJ TO MJ CONNECTION
 - E) SEE TYPICAL VALVE INSTALLATION DETAIL PAGE 3



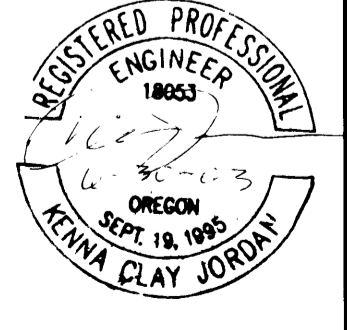
FILED
Date: 1/16/2023 By: J.P.
This survey consists of:
Map:
Narration:
Corner Rpt:

DOUGLAS COUNTY SURVEYOR

PHASE 1

TL 8,000 ACCT. NO. 11824.26 TL 8,002 ACCT. NO. 11824.28
TL 8,001 ACCT. NO. 11824.27 TL 1,302 ACCT. NO. 11824.03

CATCH BASIN		MANHOLES AND CLEANOUT	
CB1 T/C= 697.53± INV= 694.4'	CB5 T/C= 713.98± INV= 709.7'	MH1 "DROP" STAT= 7+45.78 RIM= 698.4' INV. OUT= 690.8' INV. IN= 694.2' EXISTING TO MH1 162.78' • 5.84%	MH3 STAT= 11+83.62 RIM= 723.5' INV. OUT= 717.4' INV. IN= 717.5' MH2 TO MH3 305.39' • 4.09%
CB2 T/C= 710.77± INV= 707.3'	CB8 T/C= 706.88± INV= 702.48'	MH2 STAT= 8+77.17 RIM= 711.3' INV. OUT= 704.8' INV. IN= 704.9' MH1 TO MH2 131.39' • 8.07%	MH5 STAT= 2+65 RIM= 715.6' INV. OUT= 709.7' INV. IN= 709.9' MH2 TO MH5 259.66' • 1.85%
CB3 T/C= 712.41± INV= 708.2'	CB21 T/C= 706.88± INV= 703.56'	MH4 STAT= 11+19.05 RIM= 711.00' INV. OUT= 704.8' INV. IN= 704.8'	MH6 STAT= 15+00 RIM= 710.00' INV. OUT= 704.8' INV. IN= 704.8'
CB4 T/C= 719.24± INV= 714.99'		MH8 STAT= 36+00 RIM= 710.00' INV. OUT= 704.8' INV. IN= 704.8'	MH9 STAT= 36+00 RIM= 710.00' INV. OUT= 704.8' INV. IN= 704.8'



JORDAN ENGINEERING
460 JORDAN LANE
ROSEBURG, OREGON 97470
(541) 673-1931

SCALE: 1"=40'
DATE: 2-4-02
ROLAND THEISS
P.O. BOX 824
MYRTLE CREEK, OR 97457
VILLAGE VIEW SUBDIVISION
47 LOTS

AS-BUILT PLAT
WITH
WATER AND SEWER
DRAWN BY: K.C.J.
REVISED
(541) 863-3134
ZONE: R-1
DRAWING NUMBER: 1 OF 2

Co. Rd. # 907 & 907A
CO. RD. # 907 & 907A AS-BUILT PLAT WITH WATER AND SEWER