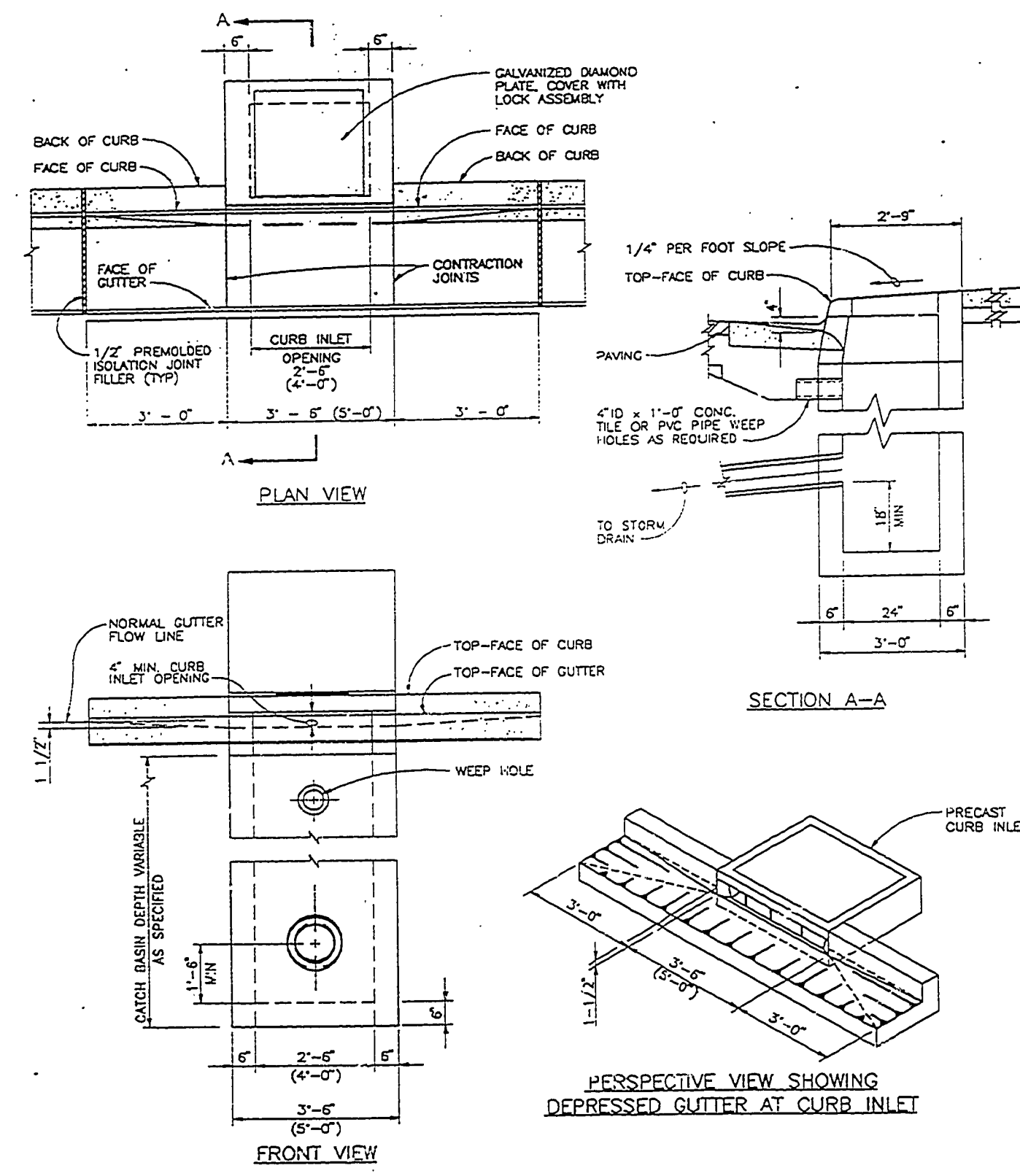


FILED

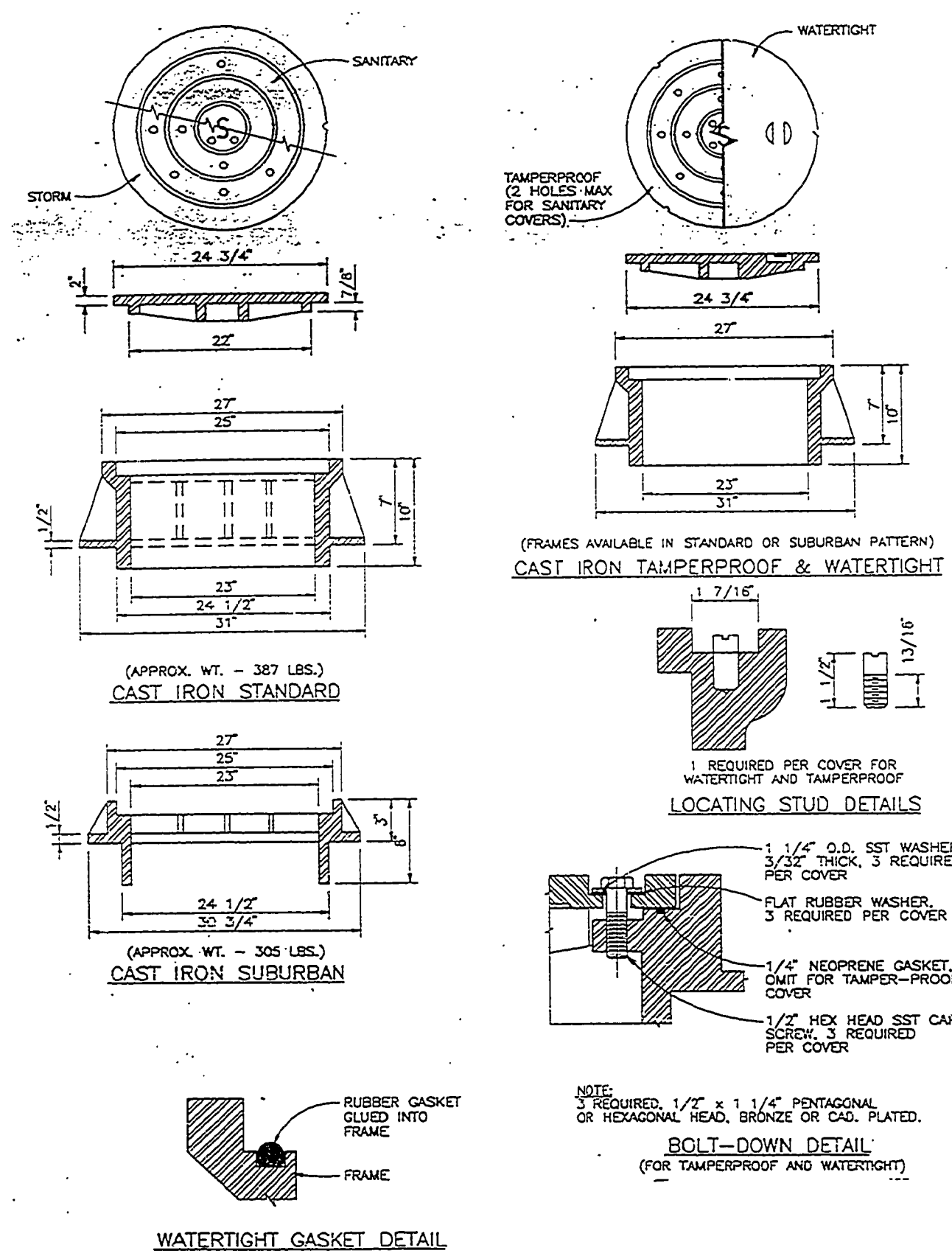
Date: 12-4-97 By: JP
This survey consists of:
Map:
Narrative:
Corner Rpt:

DOUGLAS COUNTY
SURVEYOR



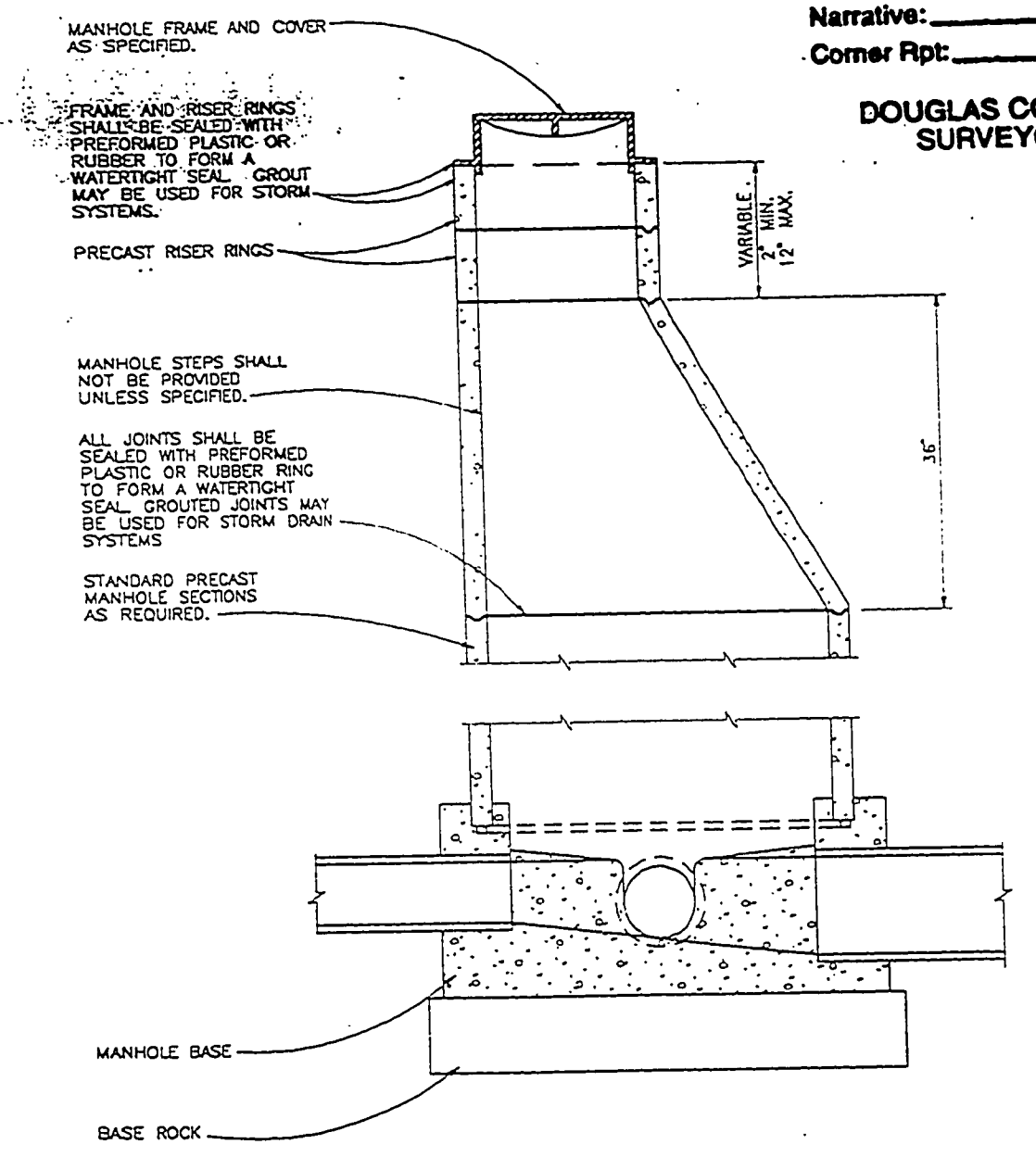
- NOTES:
1. ALL FABRICATED METAL PARTS SHALL BE HOT-DIPPED GALVANIZED AFTER FABRICATION.
 2. CONCRETE SHALL BE CLASS 3000.
 3. FOR STEEP GRADES USE STD. PRECAST INLET WITH 4"-0" OPENING OR TWO 2"-0" OPENING INLETS.
 4. CURB INLET BASE MAY BE PRECAST OR CAST-IN-PLACE.

PRECAST CURB INLET



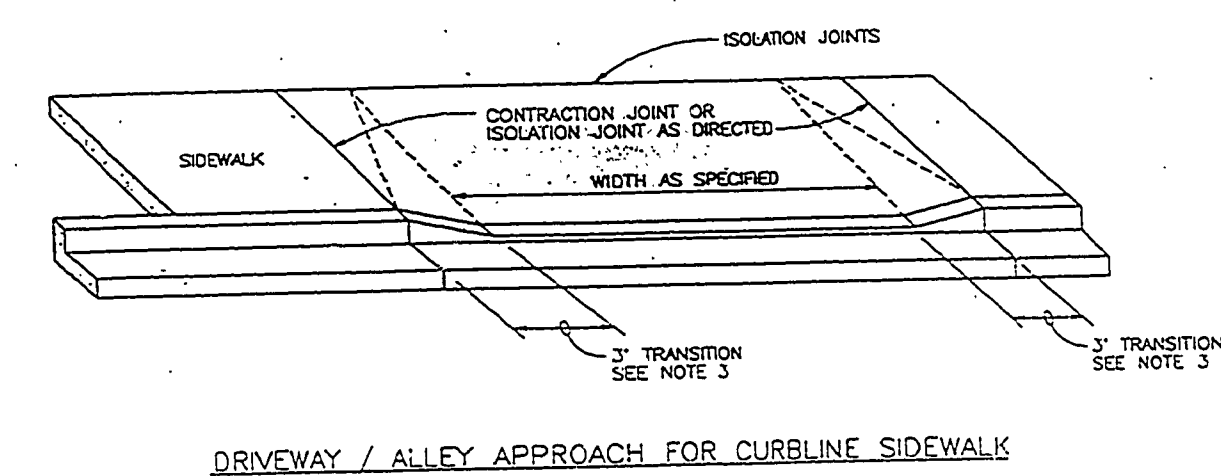
- NOTES:
1. TAMPERPROOF COVERS REQ'D ON SANITARY OR STORM DRAIN MANHOLE WHERE LOCATED IN PEDESTRIAN WAYS OR EASMENT AREAS. TAMPERPROOF COVERS FOR SANITARY MANHOLES SHALL HAVE 2 HOLES MAXIMUM.
 2. WATERTIGHT COVERS REQUIRED IF LOCATED WHERE COVER MAY BE DISMANTLED.

MANHOLE COVER AND FRAME DETAILS

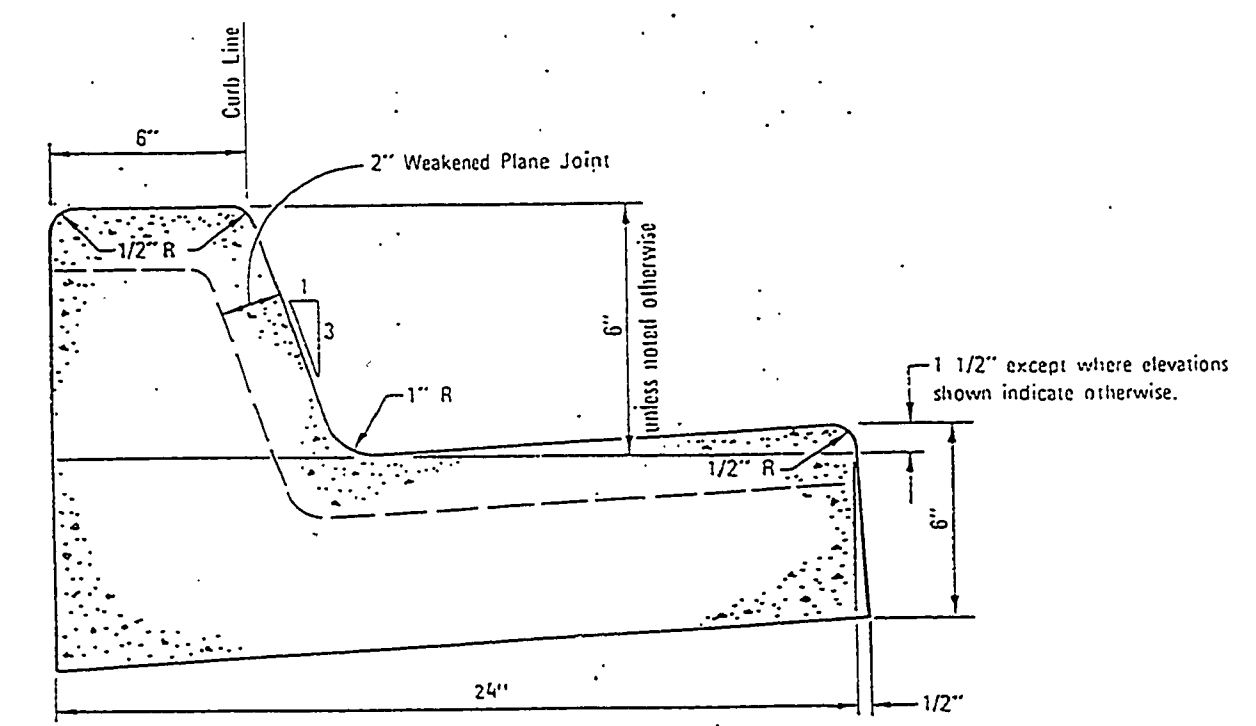


NOTE: STANDARD PRECAST MANHOLE SECTION DIAMETER SHALL BE 48".

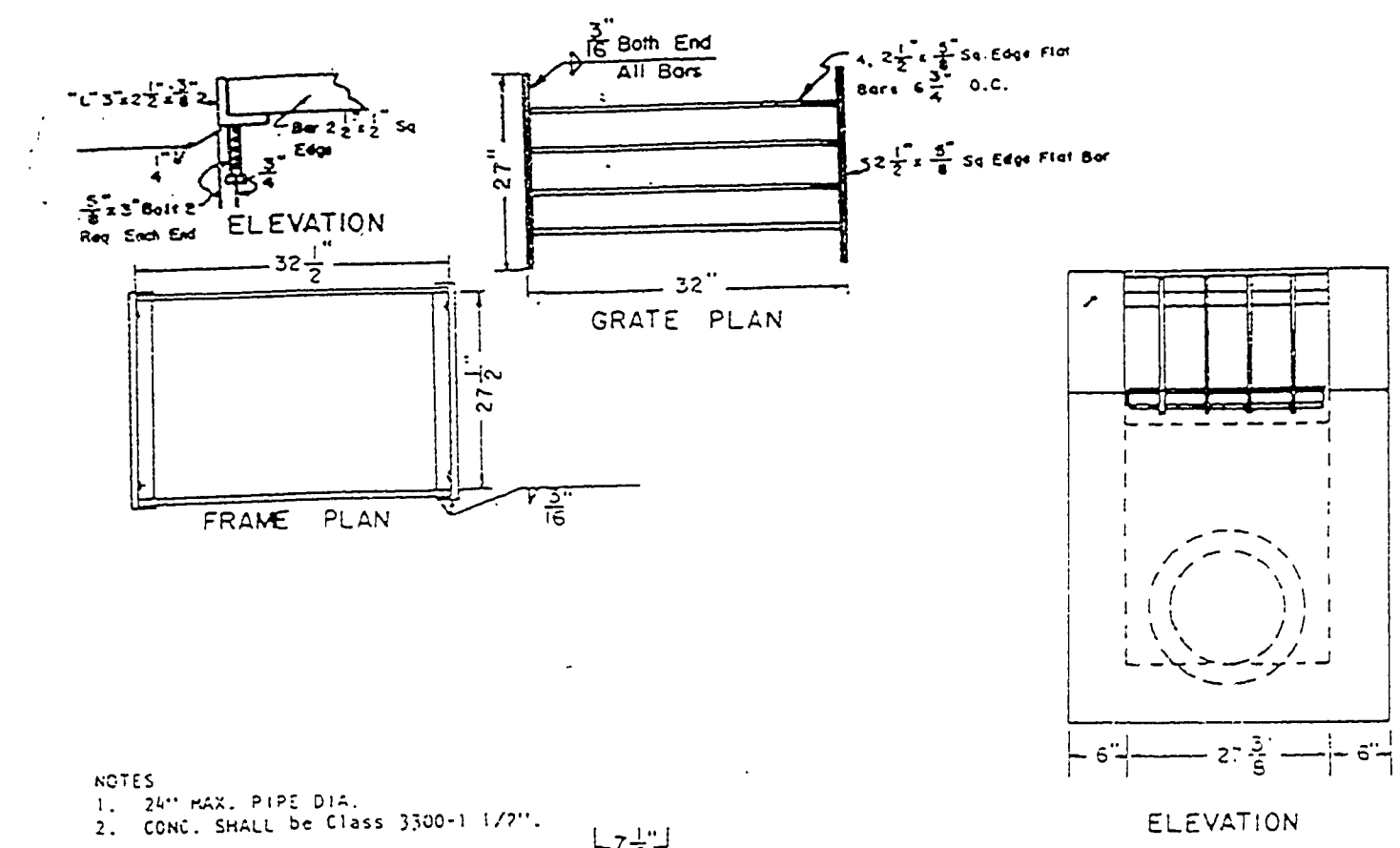
MANHOLE



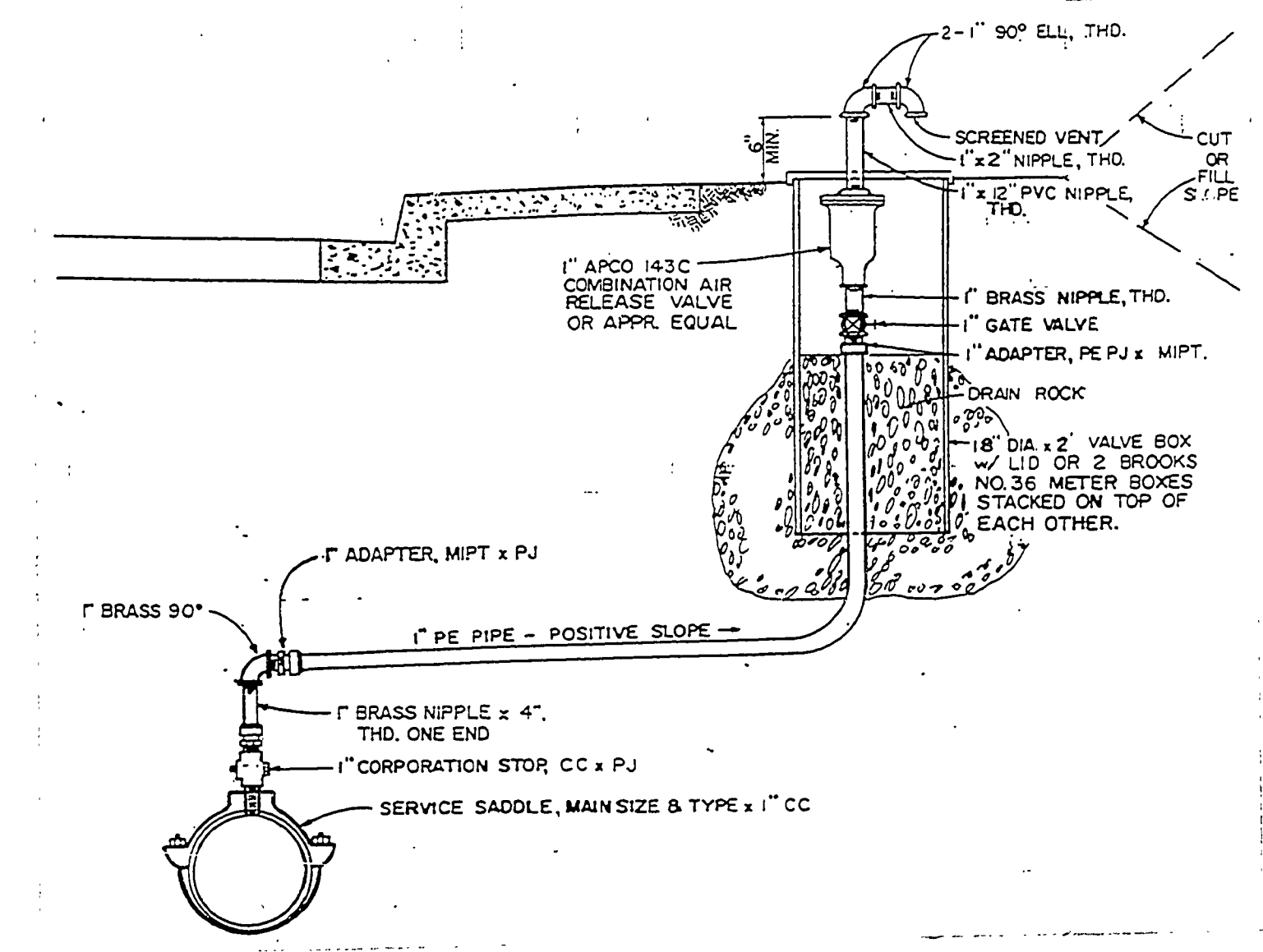
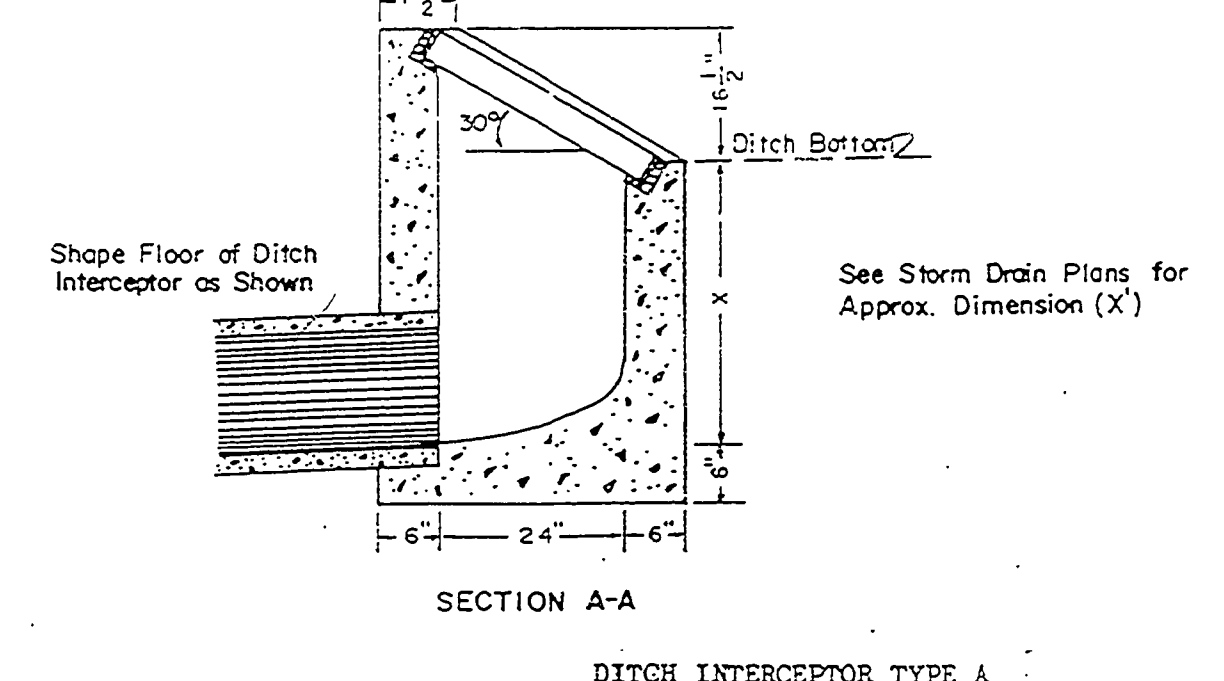
- NOTES:
1. RESIDENTIAL DRIVEWAYS AND SIDEWALK SECTIONS THROUGH DRIVEWAYS SHALL HAVE A NOMINAL THICKNESS OF SIX INCHES OF CLASS 3000 PCC.
 2. CONCRETE FOR COMMERCIAL USE AND ALLEY APPROACHES SHALL HAVE A NOMINAL THICKNESS OF 8" CLASS 3000 PCC.
 3. CURB TRANSITIONS FOR COMMERCIAL USE AND ALLEY APPROACHES SHALL BE 5 FEET.
 4. PCC APRONS SHALL BE JOINTED IN ACCORDANCE WITH DRAWING 212.



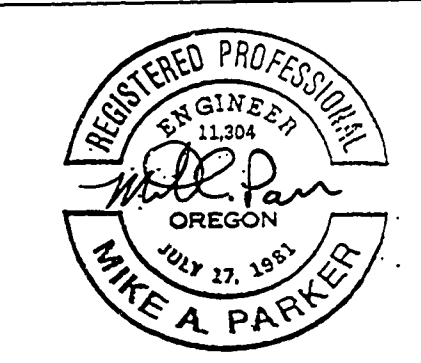
- NOTES:
1. CONCRETE SHALL BE CLASS 3300-11".



- NOTES:
1. 24" MAX. PIPE DIA.
 2. CONC. SHALL BE CLASS 3300-1 1/2".



TYPICAL 1" COMBINATION AIR RELEASE VALVE ASSEMBLY



Rev.	Date	Description
1	12-19-94	AS BUILTS PHASE II
3	7/8/97	AS-BUILTS - PHASE 3

i.e. 1205 S.E. Court Street
Roseburg, Oregon 97470
PHONE (503) 673-0166
ENGINEERING FAX (503) 440-9392

Project Name: VALLEY ESTATES

Title: DETAILS

DES. Q/R PROJECT NO. TAE01

DWG. D/F DATE: SEPT. 1992

CHK. M/P SCALE: AS NOTED

APP. M/P SHEET 5 OF 5

OCTOBER DR. - CO. RD. #905
SUNWOOD CT. - CO. RD. #905A
SILVERCREST CT. - CO. RD. #905B

RD905DET

RD905DET

11