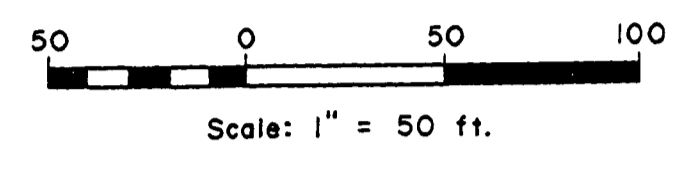


FILED
 Date: 2-11-97 By: JPC
 This survey consists of:
 Map:
 Narrative:
 Closure Ppt:
 DOUGLAS COUNTY
 SURVEYOR



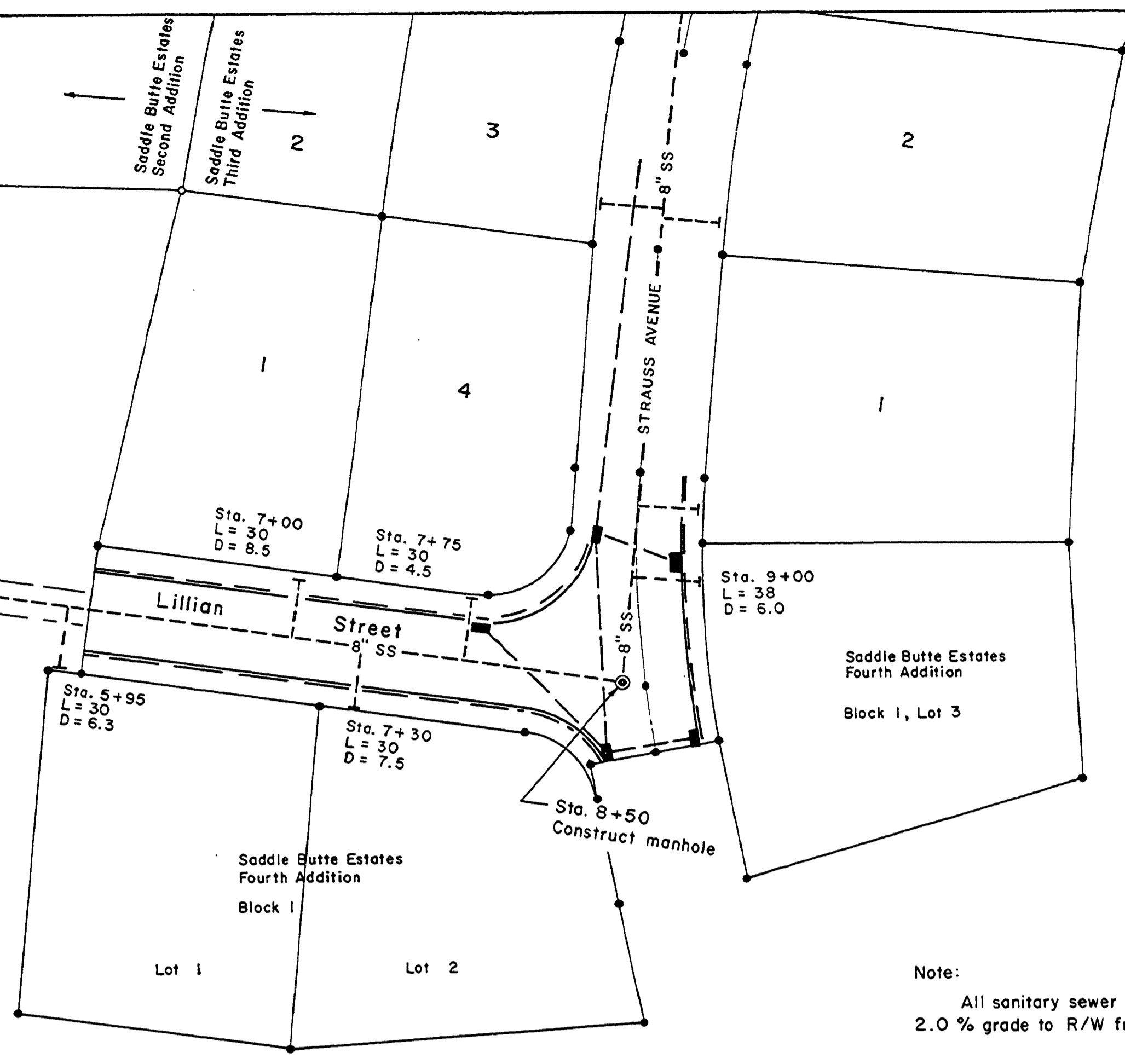
Existing manhole
Sta. 3+58, Line A

15 ft. sewer easement

Begin construction
Sta. 0+00, new line =
Sta. 6+28 existing Line A
Construct manhole

Existing manhole
Sta. 7+40, Line A
TBM No. 5, center SS manhole lid
Elev. 508.69

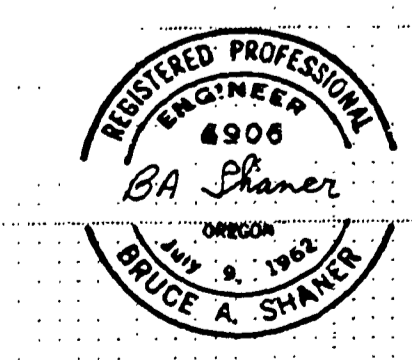
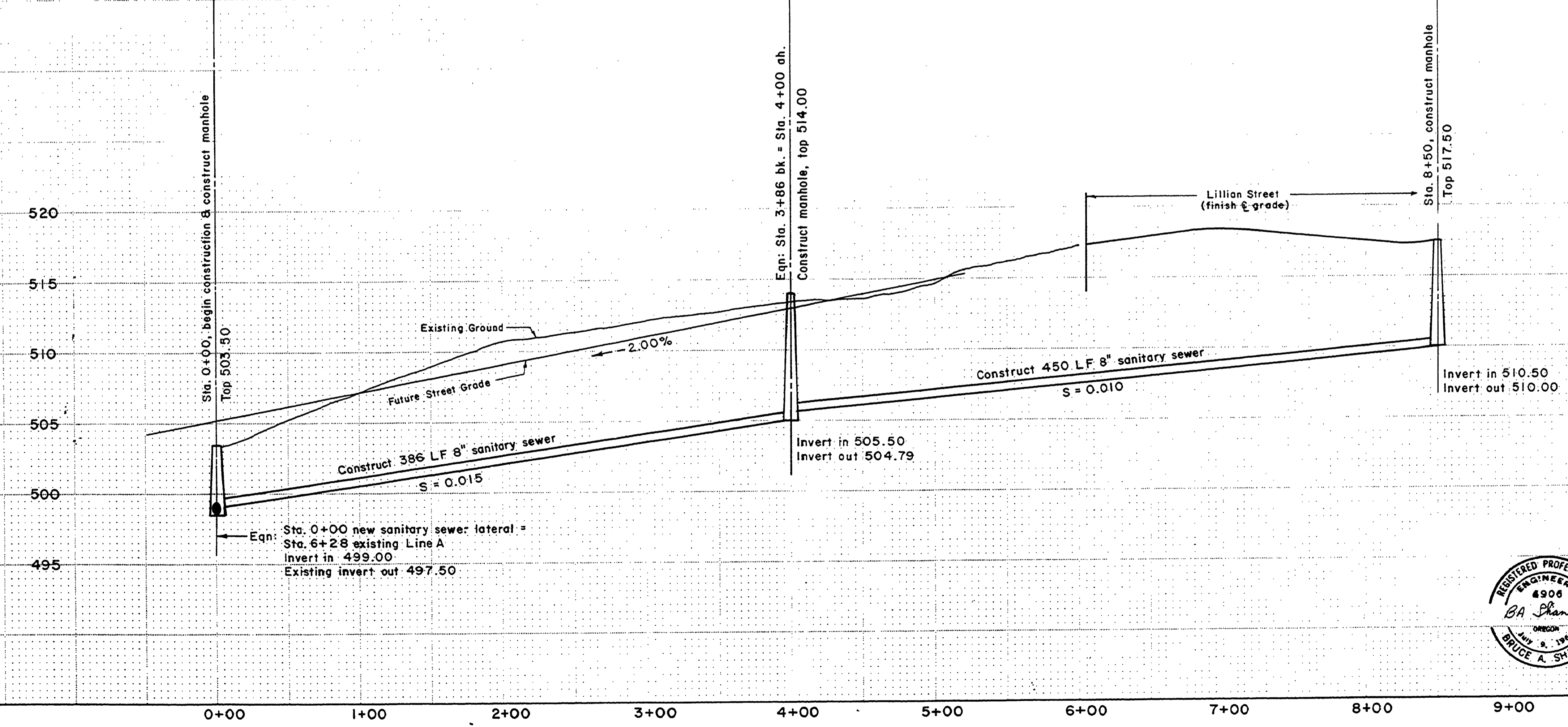
Eqn: Sta. 3+86 bk. = Sta. 4+00 ah.
Construct manhole



Note:
 All sanitary sewer laterals to be constructed at
 2.0 % grade to R/W from street centerline.

See next page for additional sanitary sewer notes

Scale: 1" = 50 ft. Horiz.
 1" = 5 ft. Vert.



ROSEBURG URBAN SANITARY AUTHORITY
 SANITARY SEWERS
 SADDLE BUTTE ESTATES, THIRD ADDITION
 June 25, 1990 "As Constructed" December, 1990 Sheet 2 of 5

ROAD335G

FINAL SURVEY	DATE
SURVEY	BY
PLOTTED	
NOTE BOOK	
NO.	
AREAS CHECKED	

ORIGINAL SURVEY	DATE
SURVEY	BY
PLOTTED	
NOTE BOOK	
NO.	
AREAS CHECKED	