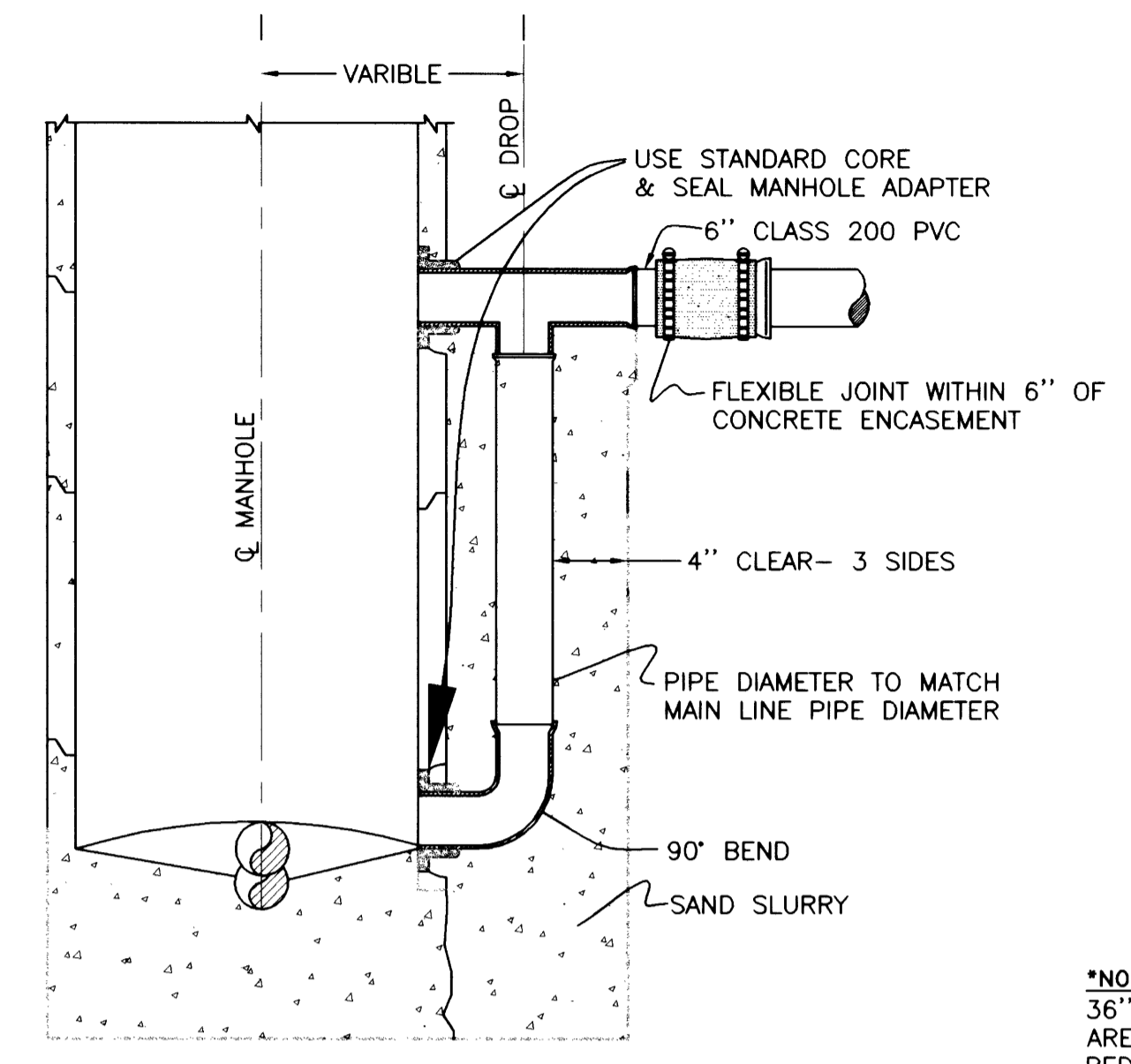
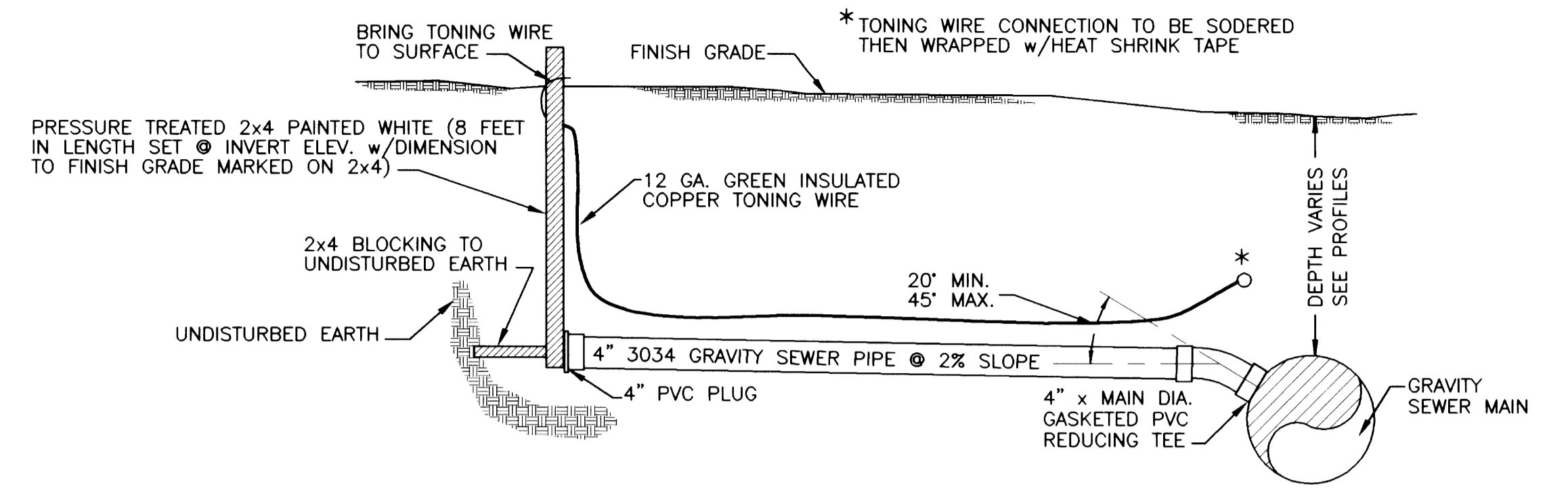


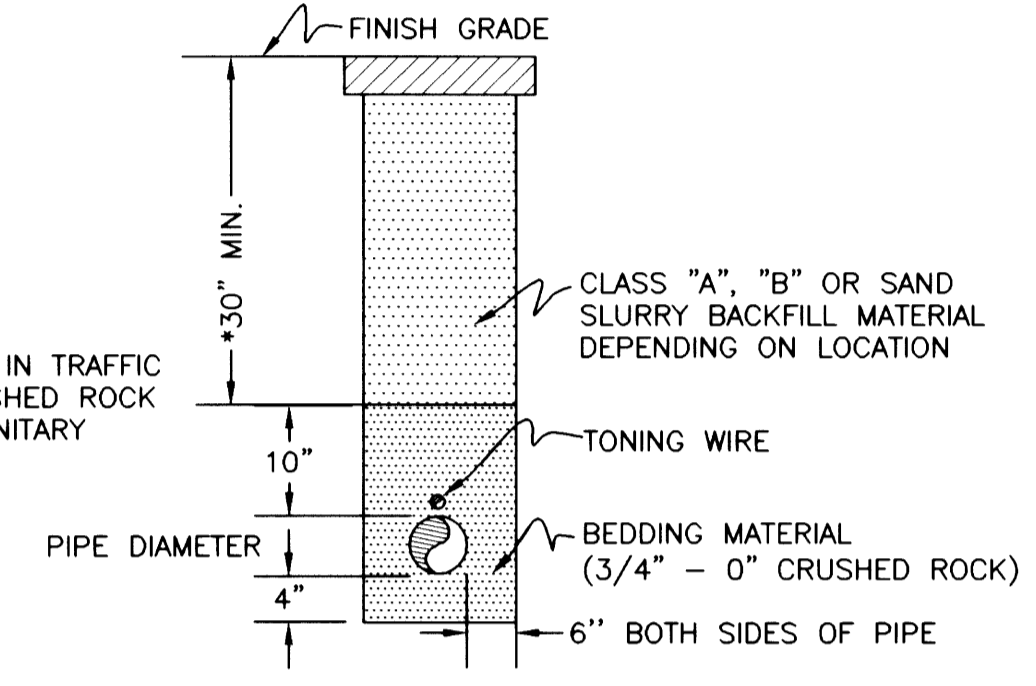
TYPICAL SANITARY MANHOLE DETAIL
(CAST IN PLACE)



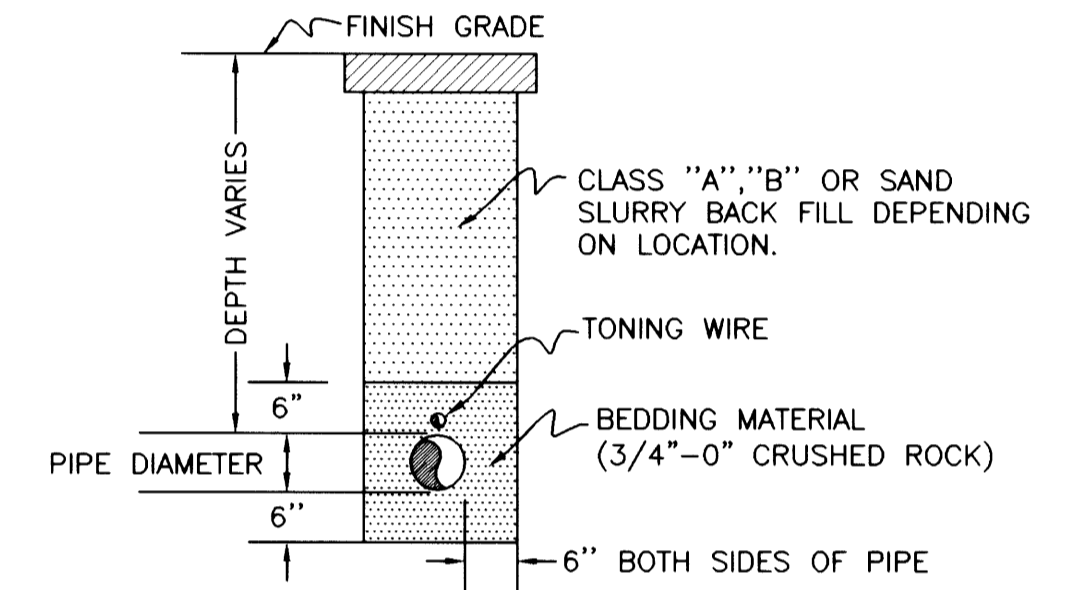
TYPICAL OUTSIDE DROP MANHOLE DETAIL



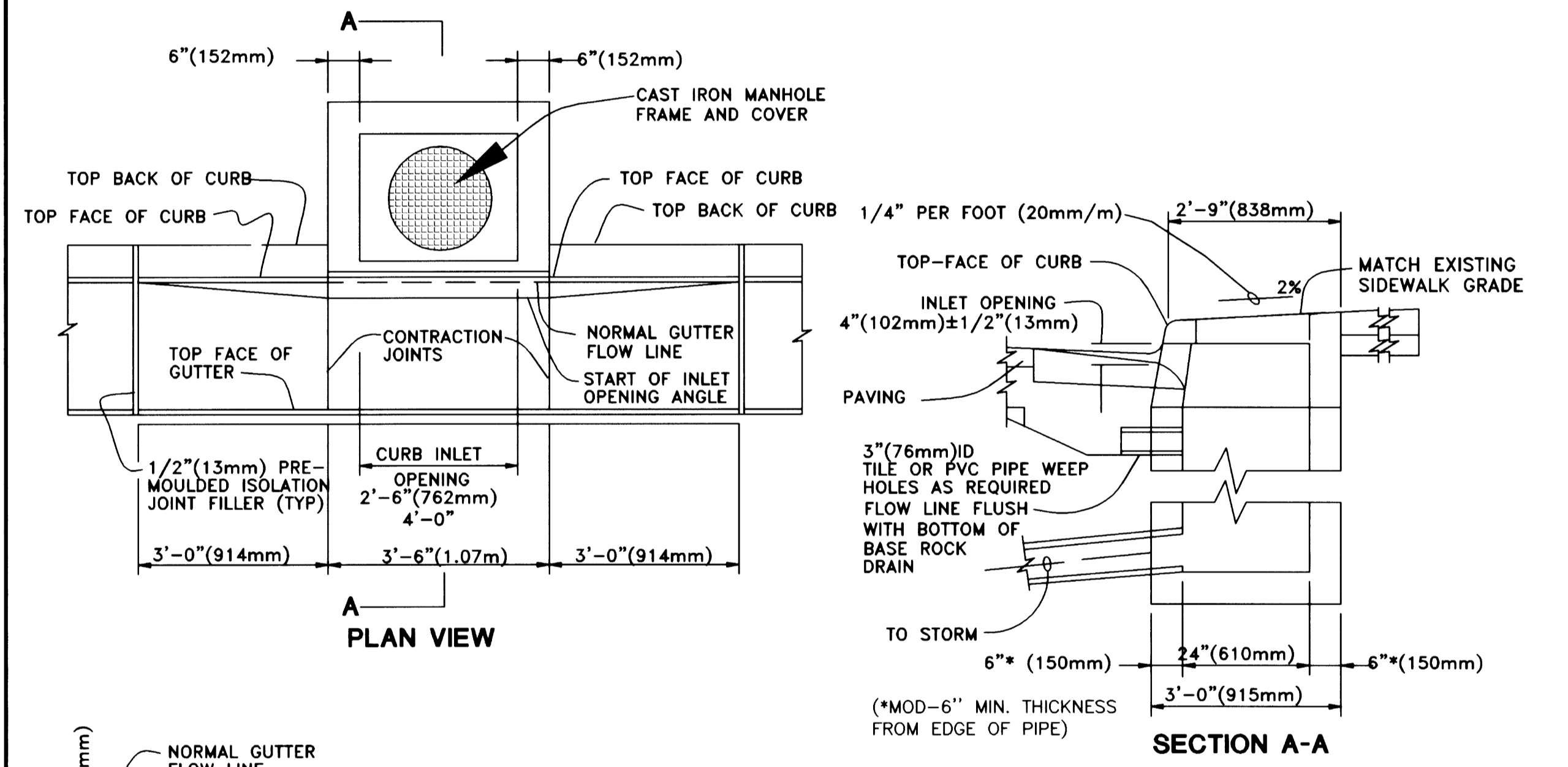
TYPICAL 4" SEWER SERVICE CONNECTION DETAIL



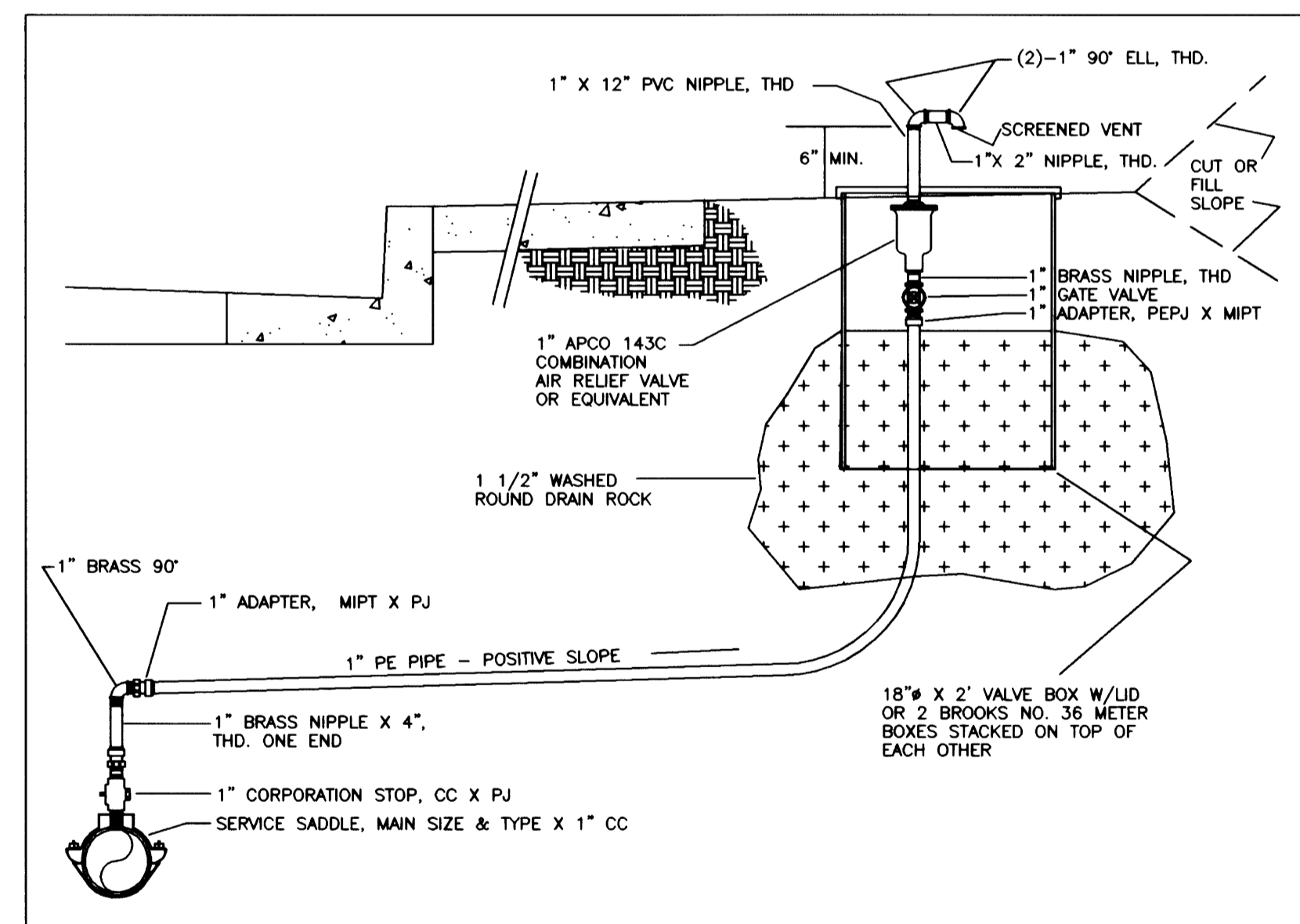
TYPICAL SEWER SERVICE LINE TRENCH DETAIL



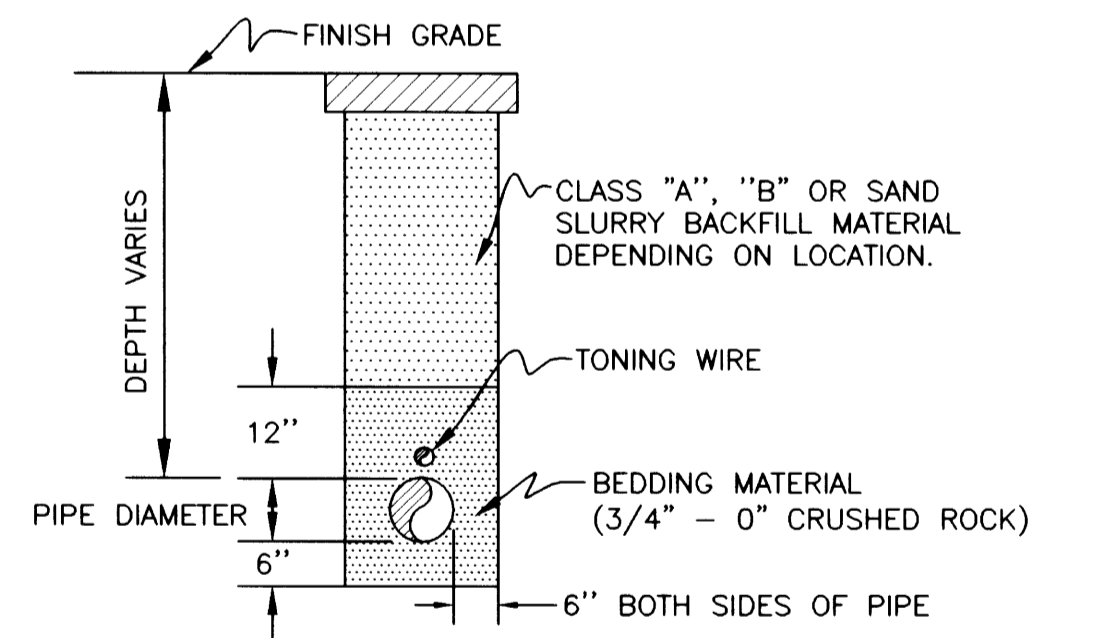
TYPICAL STORM LINE TRENCH DETAIL



TYPICAL CG-3 INLET DETAIL



TYPICAL 1" COMBINATION AIR RELEASE VALVE ASSEMBLY

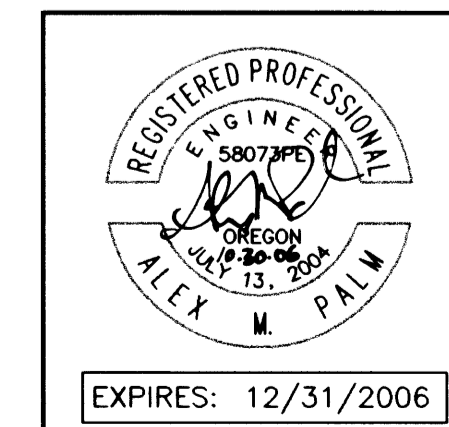


TYPICAL SEWER MAINLINE TRENCH DETAIL

- NOTES:
1. ALL FABRICATED METAL PARTS SHALL BE HOT-DIPPED GALVANIZED AFTER FABRICATION EXCEPT MH FRAME AND COVER.
 2. CONCRETE SHALL MEET CITY STANDARD SPEC. FOR STREET CONSTRUCTION STRUCTURES. (3300 PSI, 22.75MPa)
 3. FOR STEEP GRADES USE STD. PRECAST INLET WITH 4'-0" (102mm) OPENING OR TWO 2'-6" (762mm) OPENING INLETS.
 4. CURB INLET BASE MAY BE PRECAST OR CAST-IN-PLACE.

CITY OF ROSEBURG WATER DEPARTMENT DATE: 10/13/1983 REV: 1/25/2000 STANDARD DWG. NO. 107A

FILED
Date: 9-5-2007 By: JLP
This survey consists of: 11 Pgs.
Map: Co. Rd. 901 A & L
Narrative:
Corner Rpt:
DOUGLAS COUNTY SURVEYOR



Rev.	Date	Dwg	Description
1	9/10/04	STH	R.U.S.A. COMMENTS
2	9/14/04	STH	D.C. ENGINEERING COMMENTS
3	11/8/04	ANV	ROSEBURG WATER COMMENTS
4	3/24/06	NRJ	AS-BUILTS

Project Name: SADDLE BUTTE ESTATES 9TH ADDITION	
Title: DETAILS	Project No.: 1968-05
DES AMP	DATE: AUGUST 18, 2004
DWG BWC	SCALE: AS SHOWN
CHK SNL	SHEET: 11 OF 11
APP SNL	

Co. Rd. # 901 A & L

CO. RD. #901A & L DETAILS

901ALDT4

DO NOT DUPLICATE