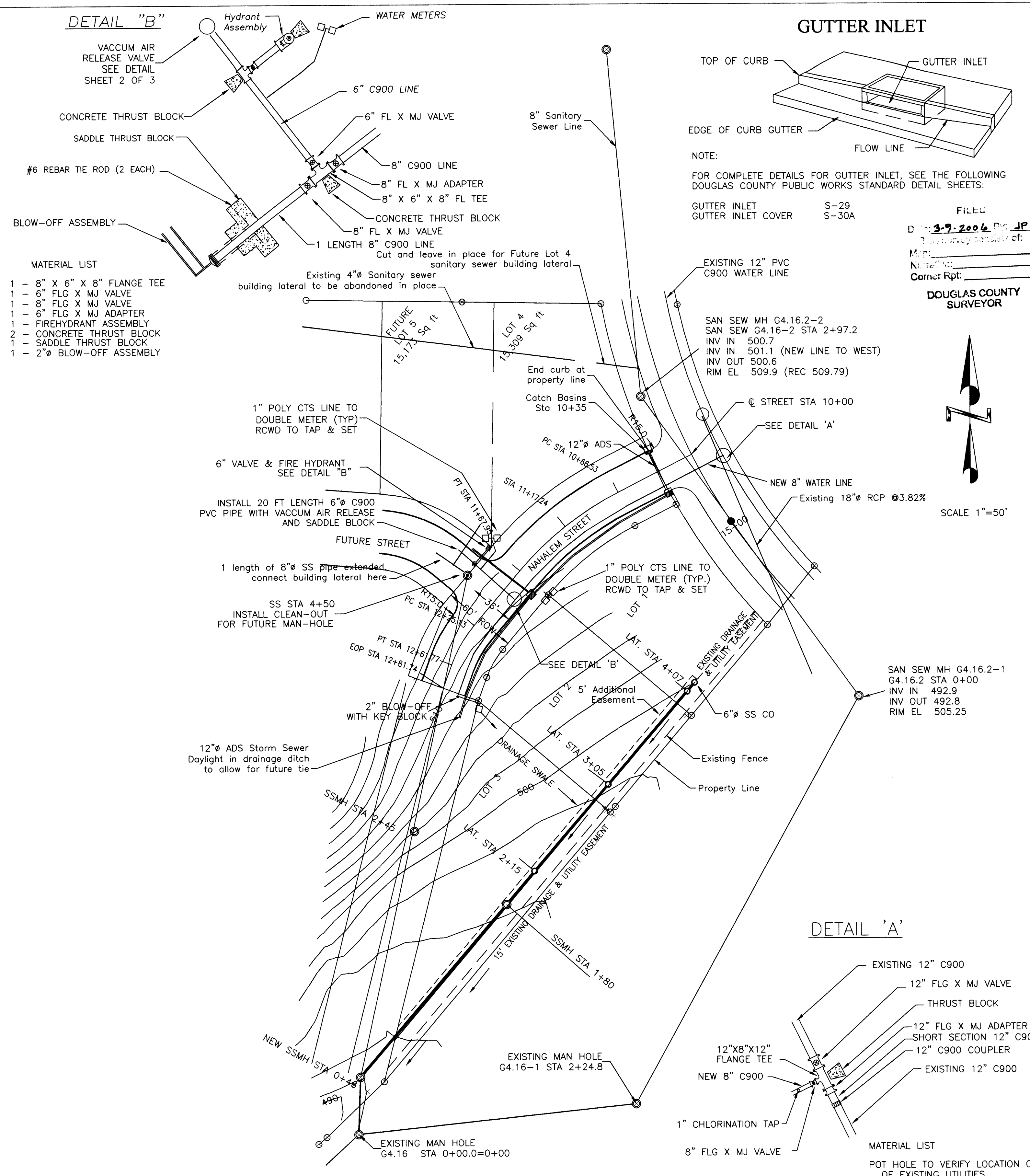
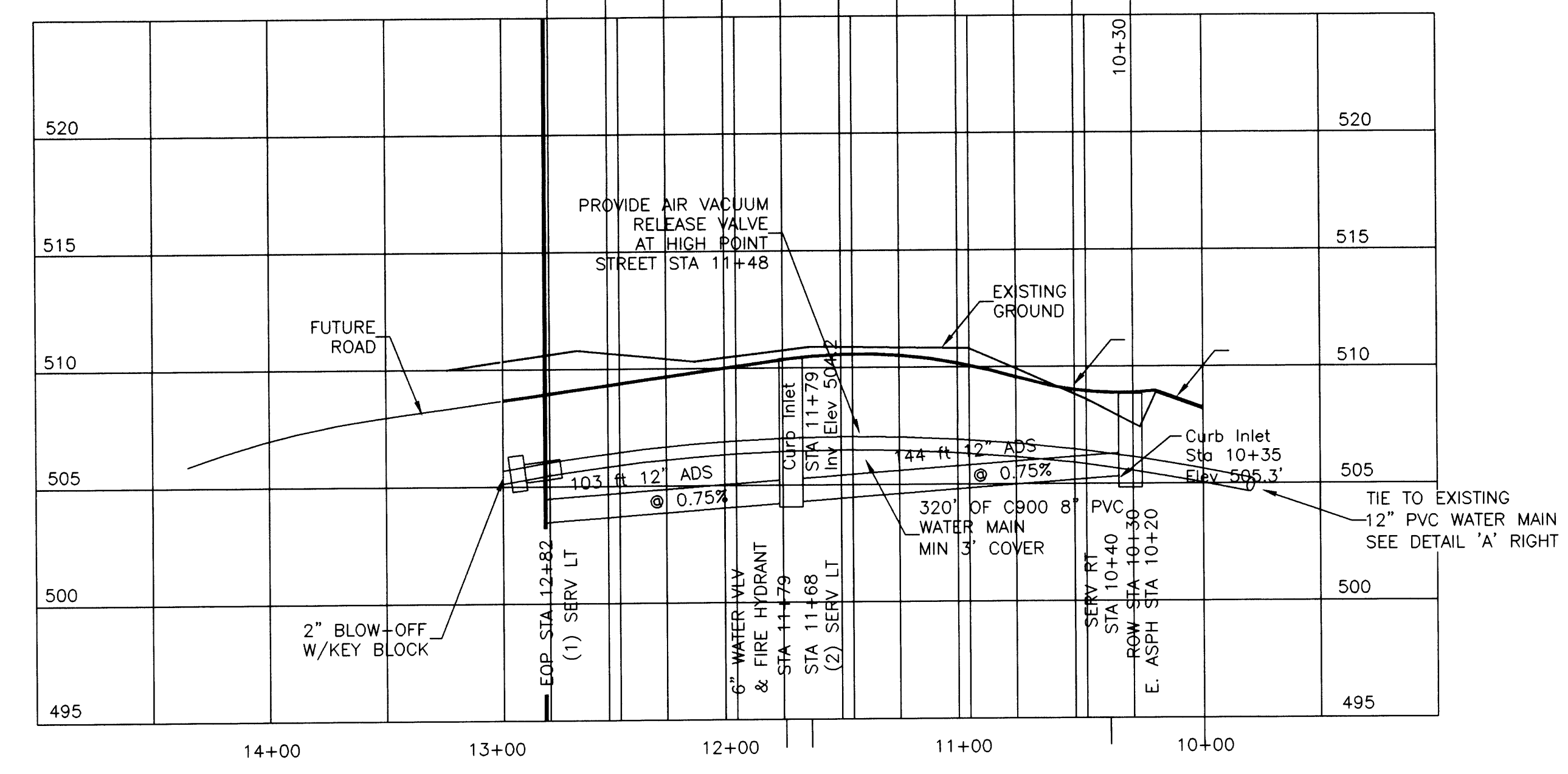
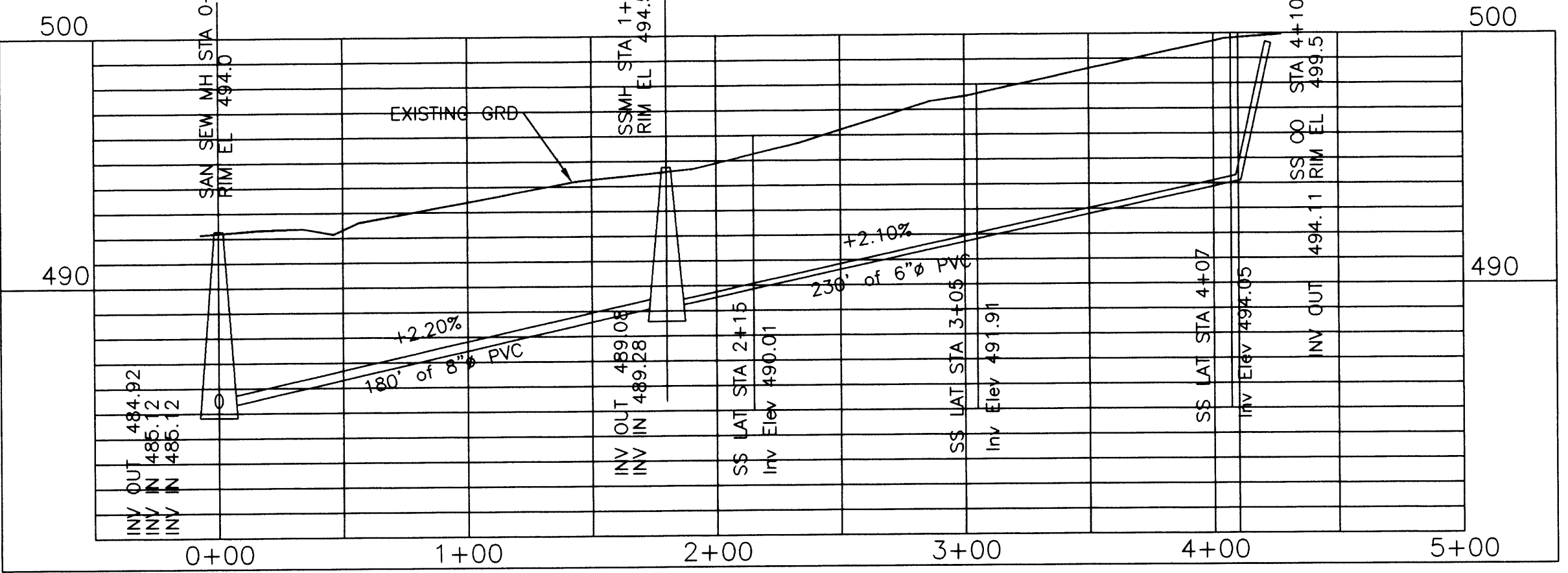


**GRAVITY SANITARY SEWER QUANTITY OF MATERIALS**

|      |                                    |
|------|------------------------------------|
| 3    | 48" MANHOLE                        |
| 1    | 6" CLEAN OUT                       |
| 1    | 8" CLEAN OUT                       |
| 640' | 8" ASTM 3034 SEWER PIPE            |
| 220' | 6" ASTM 3034 SEWER PIPE            |
| 5    | EACH - 4" ASTM 3034 SEWER SERVICES |



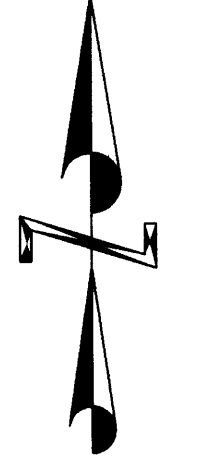
- MATERIAL LIST**
- 1 - 8" X 6" X 8" FLANGE TEE
  - 1 - 6" FLG X MJ VALVE
  - 1 - 8" FLG X MJ VALVE
  - 1 - 6" FLG X MJ ADAPTER
  - 1 - FIREHYDRANT ASSEMBLY
  - 2 - CONCRETE THRUST BLOCK
  - 1 - SADDLE THRUST BLOCK
  - 1 - 2" BLOW-OFF ASSEMBLY

**GUTTER INLET**

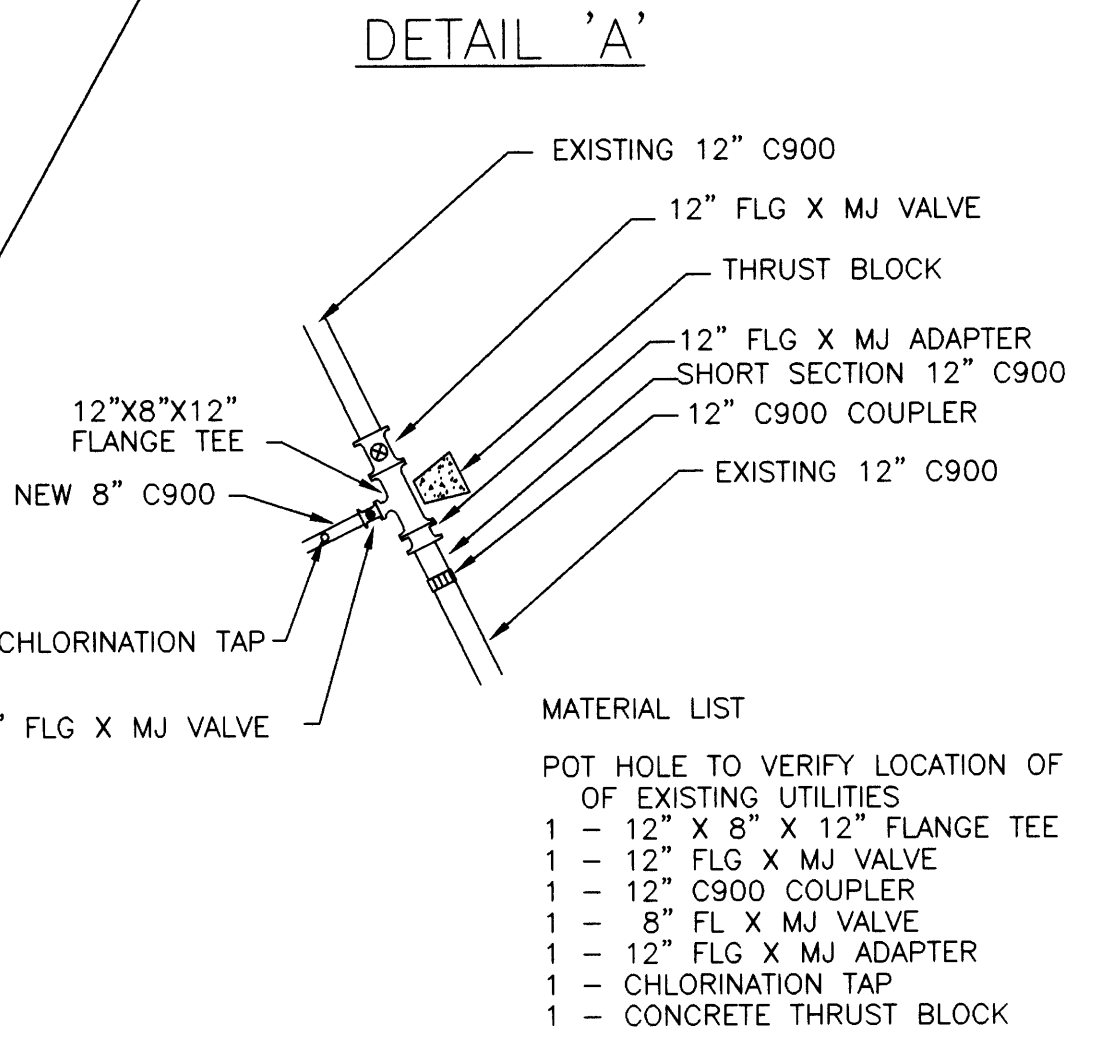
TOP OF CURB  
EDGE OF CURB GUTTER  
FLOW LINE

NOTE:  
FOR COMPLETE DETAILS FOR GUTTER INLET, SEE THE FOLLOWING DOUGLAS COUNTY PUBLIC WORKS STANDARD DETAIL SHEETS:  
GUTTER INLET S-29  
GUTTER INLET COVER S-30A

FILED  
DATE: 3-9-2006  
BY: JP  
Name: \_\_\_\_\_  
Corner Rpt: \_\_\_\_\_  
DOUGLAS COUNTY SURVEYOR



SCALE 1"=50'



**DOUGLAS COUNTY PUBLIC WORKS INSPECTION SCHEDULE**

DOUGLAS COUNTY PUBLIC WORKS SHALL BE NOTIFIED FOR INSPECTION AT LEAST 24 HOURS PRIOR TO THE ACCOMPLISHMENT OF THE FOLLOWING STAGES OF CONSTRUCTION:

1. ANY STORM SEWER CONSTRUCTION (INCLUDING STRUCTURES)
2. FINISH SUB-GRADE. (PRIOR TO FABRIC INSTALLATION)
3. SOIL STABILIZATION FABRIC INSTALLATION
4. ANY CONCRETE WORK
5. FINISH BASE COURSE GRADE
6. PAVING

NONE OF THE ABOVE ITEMS OF WORK SHALL BE COVERED UNTIL APPROVED BY DOUGLAS COUNTY DEPARTMENT OF PUBLIC WORKS.

AS-BUILT PLAN OCTOBER 2004

Co. Rd. #413 M.P. 0.00 - 0.05

**CO. RD. #413 WATER & SEWER PLAN**

REVISIONS: WATER LINE LOCATION & SIZE 12-11-99  
SAN-SEW LATERAL LOCATION 12-3-99  
SAN-SEW BUILDING LATERALS 5-5-00  
WATER LINE LOCATIONS, STORM SEWER TIE-IN 10-18-02

REGISTERED PROFESSIONAL SURVEYOR  
MAURICE E. FAIR  
EXPIRES 12-31-05

**NEHALEM STREET-WATER & SEWER PLAN**  
FOR: CURRIE, EWERT, & KING

|         |            |
|---------|------------|
| DATE    | 4-20-99    |
| JOB #   | 99-005     |
| FILE #  | STRT50ADWG |
| SHEET # | 1 of 3     |

FOR: VALYNN CURRIE  
271 SW MAIN  
WINSTON, OR 97486

DAVID J. BEEDLE  
PROFESSIONAL  
LAND SURVEYING  
163 TRAYLOR ROAD  
RIDGEB, OREGON 97469

00000005