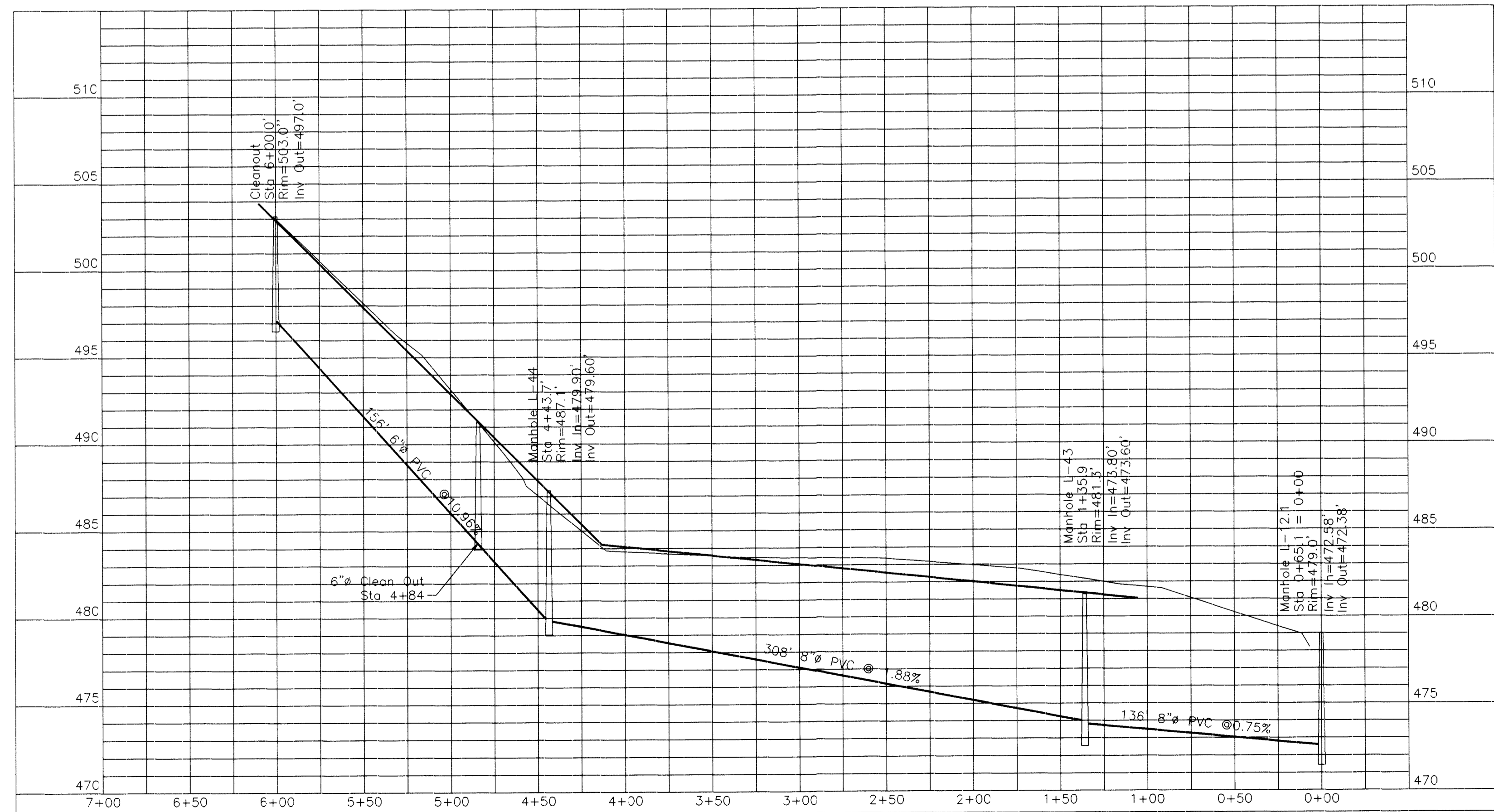
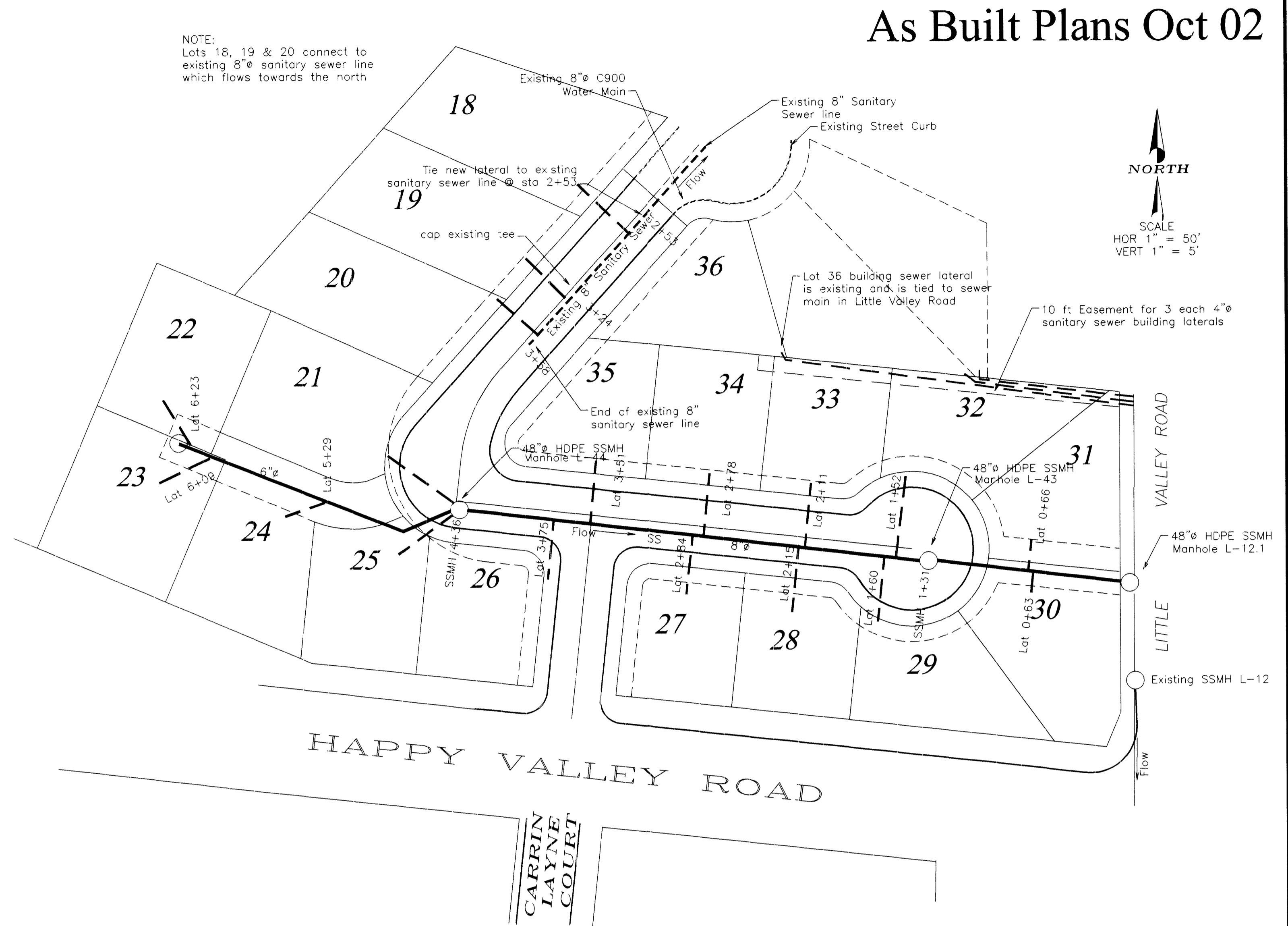


Sanitary Sewer Materials Quantities

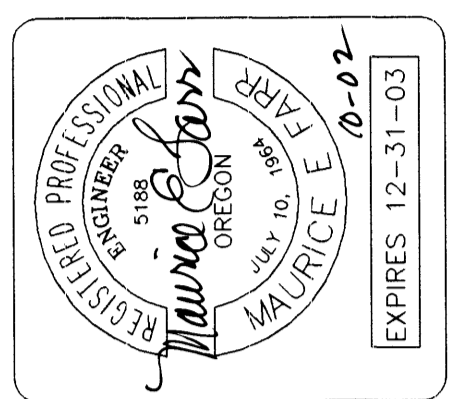
|                                 |     |        |
|---------------------------------|-----|--------|
| 4" PVC Building Service Lateral | 18  | each   |
| 8" PVC Sewer Line               | 444 | lin ft |
| 6" PVC Sewer Line               | 156 | lin ft |
| 48" HDPE Manhole                | 3   | each   |
| 6" Cleanout                     | 2   | each   |

NOTE:  
Lots 18, 19 & 20 connect to existing 8" sanitary sewer line which flows towards the north



As Built Plans Oct 02

PLANS PREPARED BY  
MAURICE E. FAIR  
PROFESSIONAL ENGINEER  
395 NE KIRBY AVENUE  
ROSEBURG, OR 97470  
PH (541) 957-9442



ROSEWOOD ESTATES PHASE IV  
HAPPY VALLEY ROAD  
ROSEBURG, OREGON

Contractor: Mark Weeks

Sanitary Sewer Construction  
Details

SHEET  
6 OF 7