

MAP Engineering, Inc.
 740 MAIN STREET
 ROSEBURG, OREGON 97470
 PHONE: (541) 229-0365 FAX: (541) 229-0353
 EMAIL: info@mapengineeringinc.com

**ROSEWOOD ESTATES, PHASE VIII
 LITTLE VALLEY ROAD - AS BUILT**

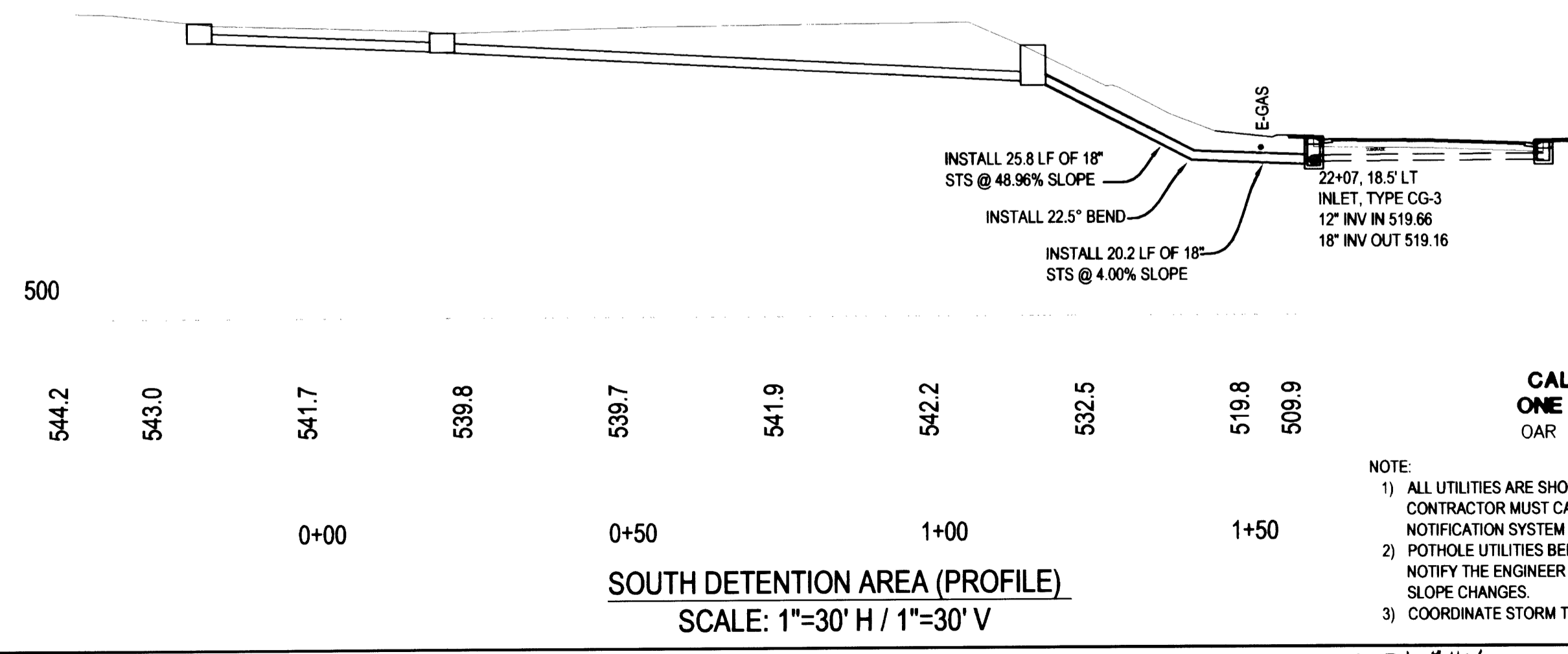
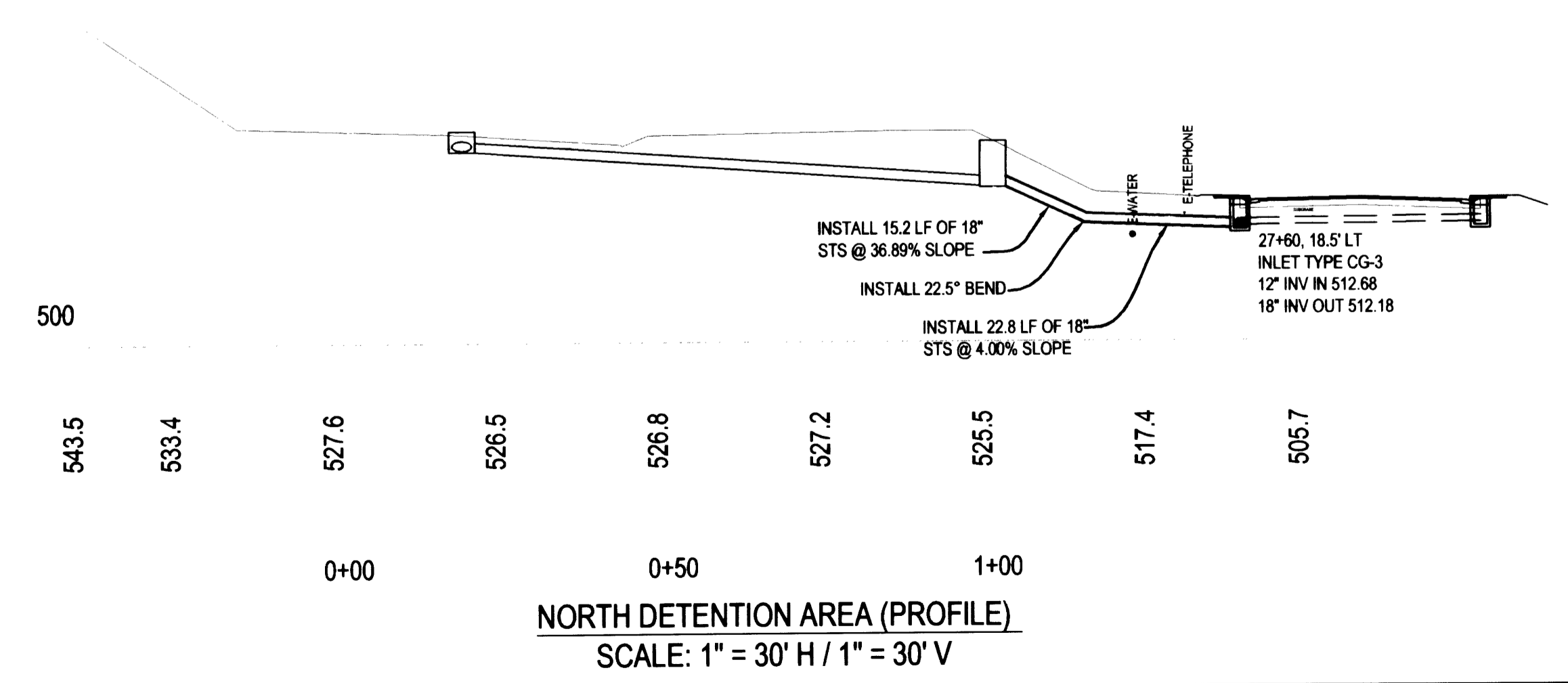
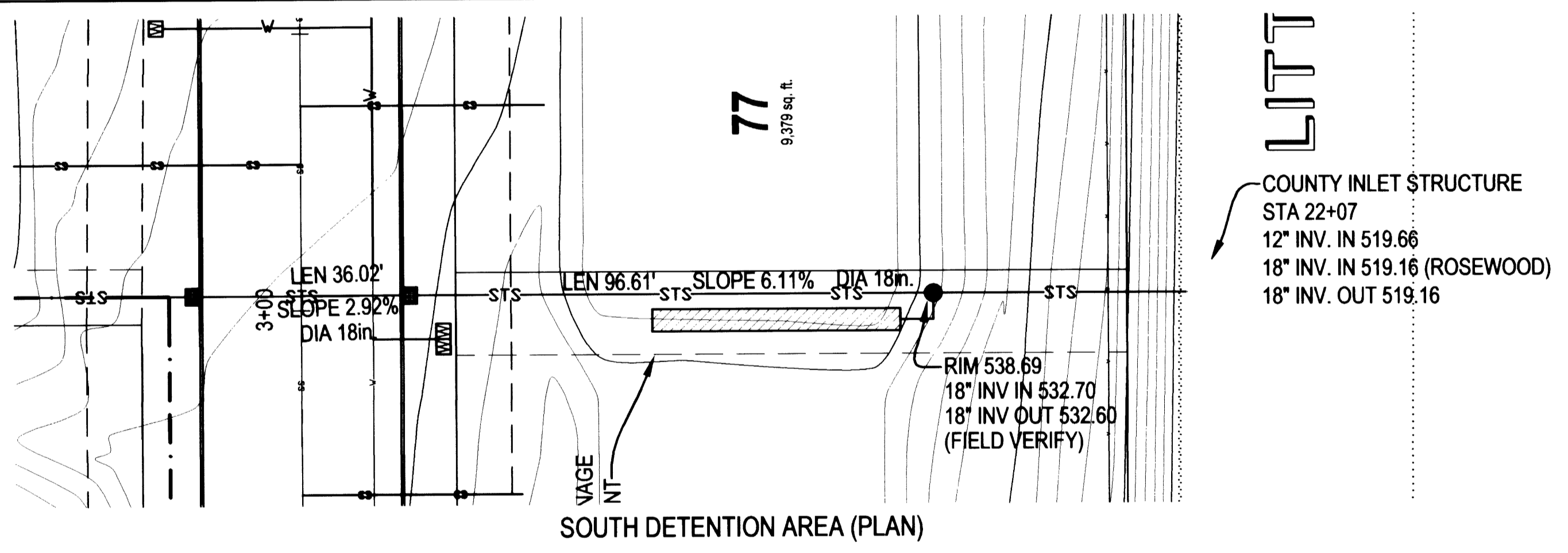
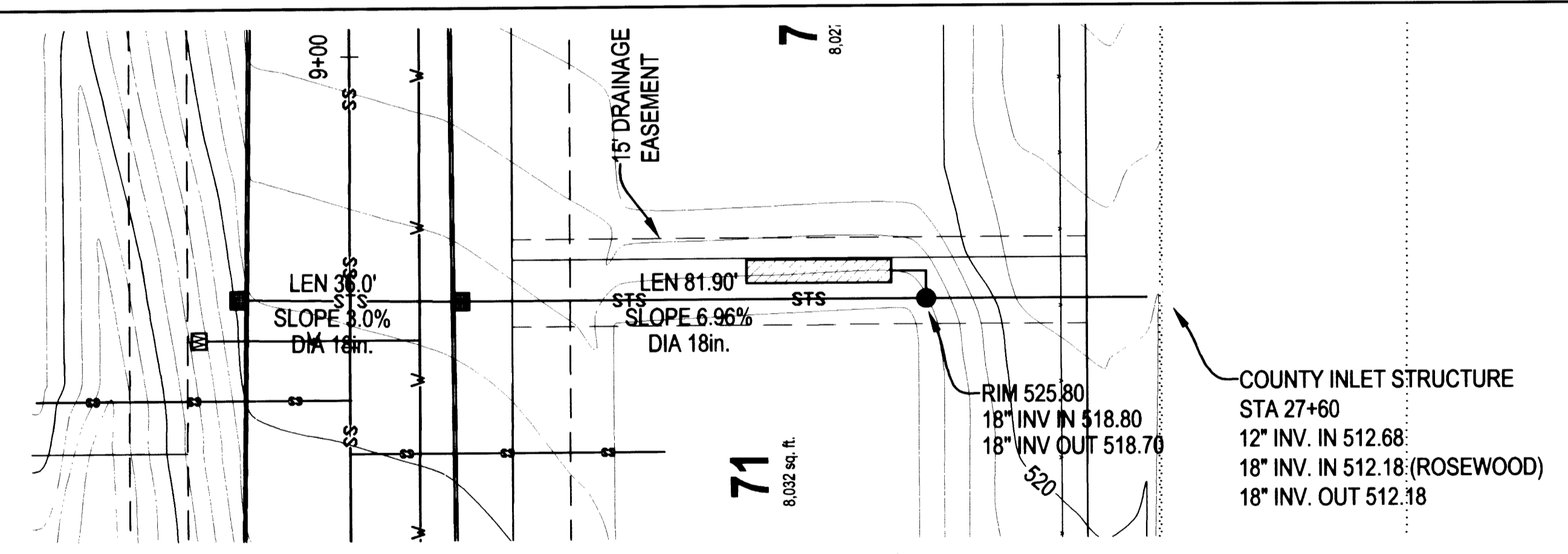
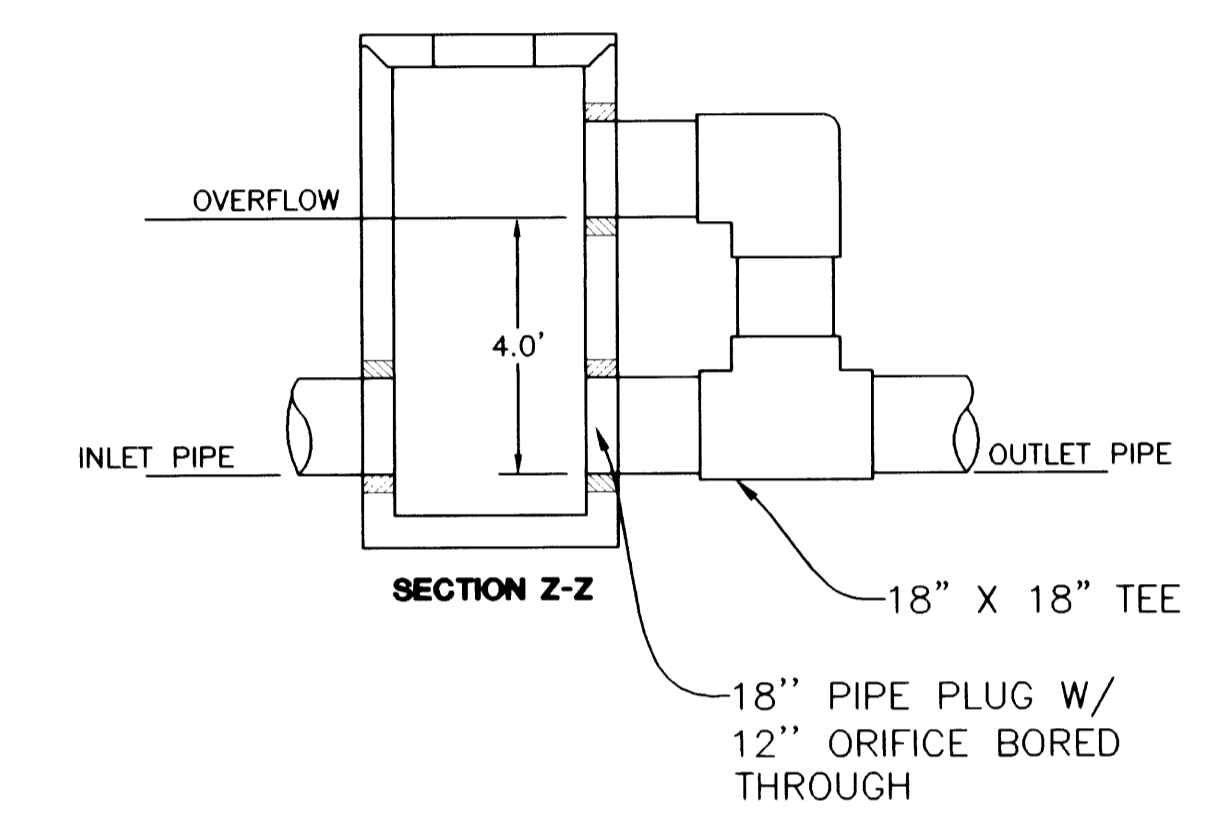
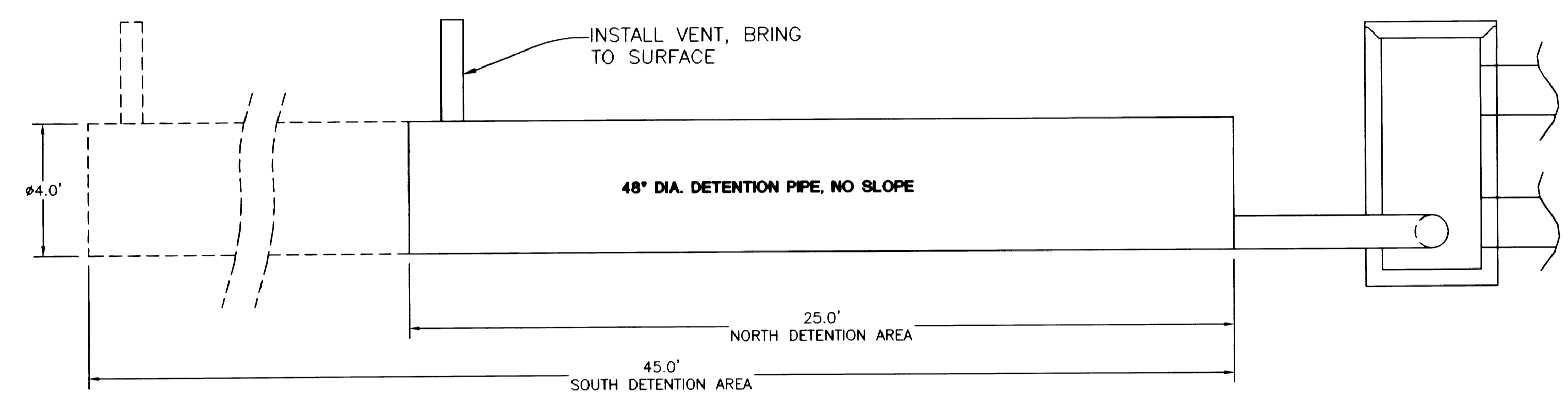
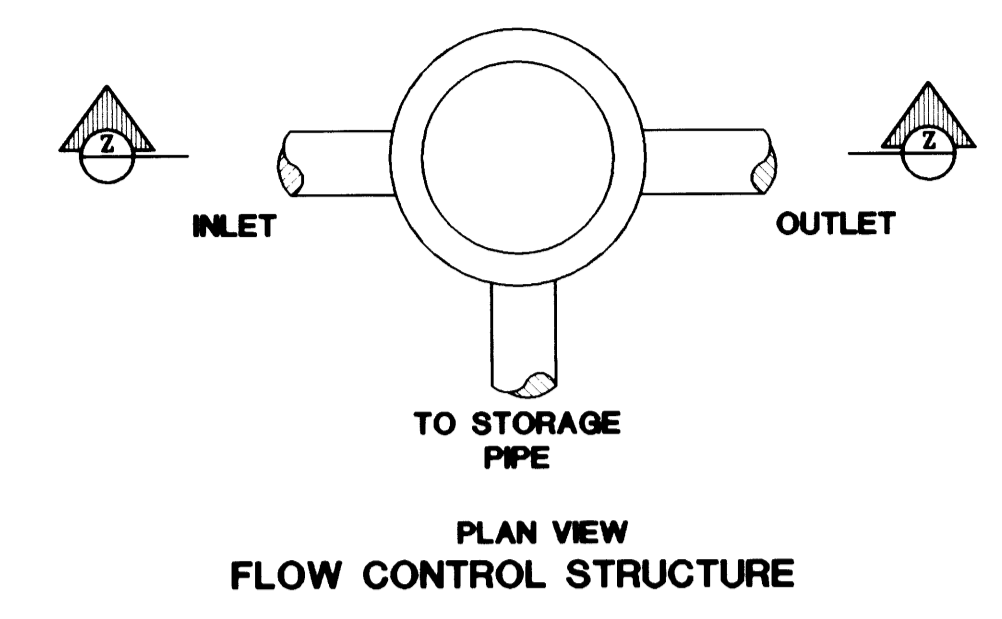
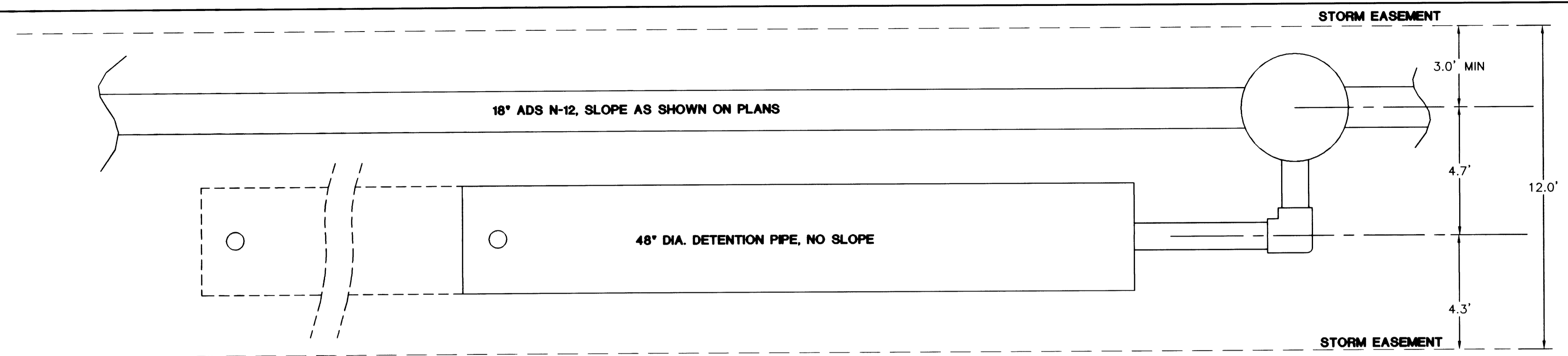
**CONSTRUCTION PLANS
 DETENTION AREAS**

PROJECT NO.: 2032-01
 DWG SCALE: AS SHOWN
 DATE: 08-15-06
 DESIGNER: JCB
 DRAFTER: JCB
 APPROVAL: MAP

REVISION #:	BY:	DATE:

SHEET: 5 OF 9

R406PLAN



**CALL BEFORE YOU DIG I
 ONE CALL: (800) 332-2344**
 OAR 952-001-0010 THROUGH
 OAR 952-001-0090

NOTE:
 1) ALL UTILITIES ARE SHOWN IN APPROXIMATE LOCATIONS. CONTRACTOR MUST CALL FOR A LOCATE WITH THE UTILITY NOTIFICATION SYSTEM BEFORE DIGGING.
 2) POT HOLE UTILITIES BEFORE STORM LINE CONSTRUCTION. NOTIFY THE ENGINEER AND COUNTY BEFORE MAKING ANY SLOPE CHANGES.
 3) COORDINATE STORM TIE-IN WITH COUNTY.

Co. Rd. # 406