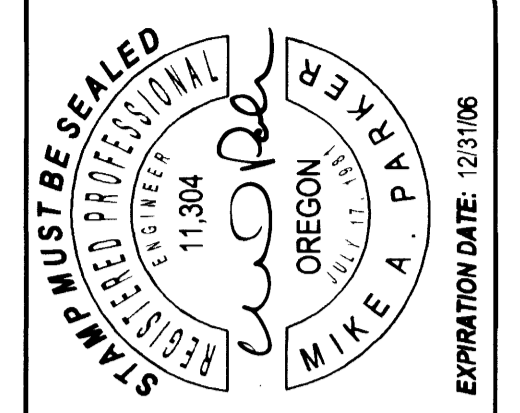
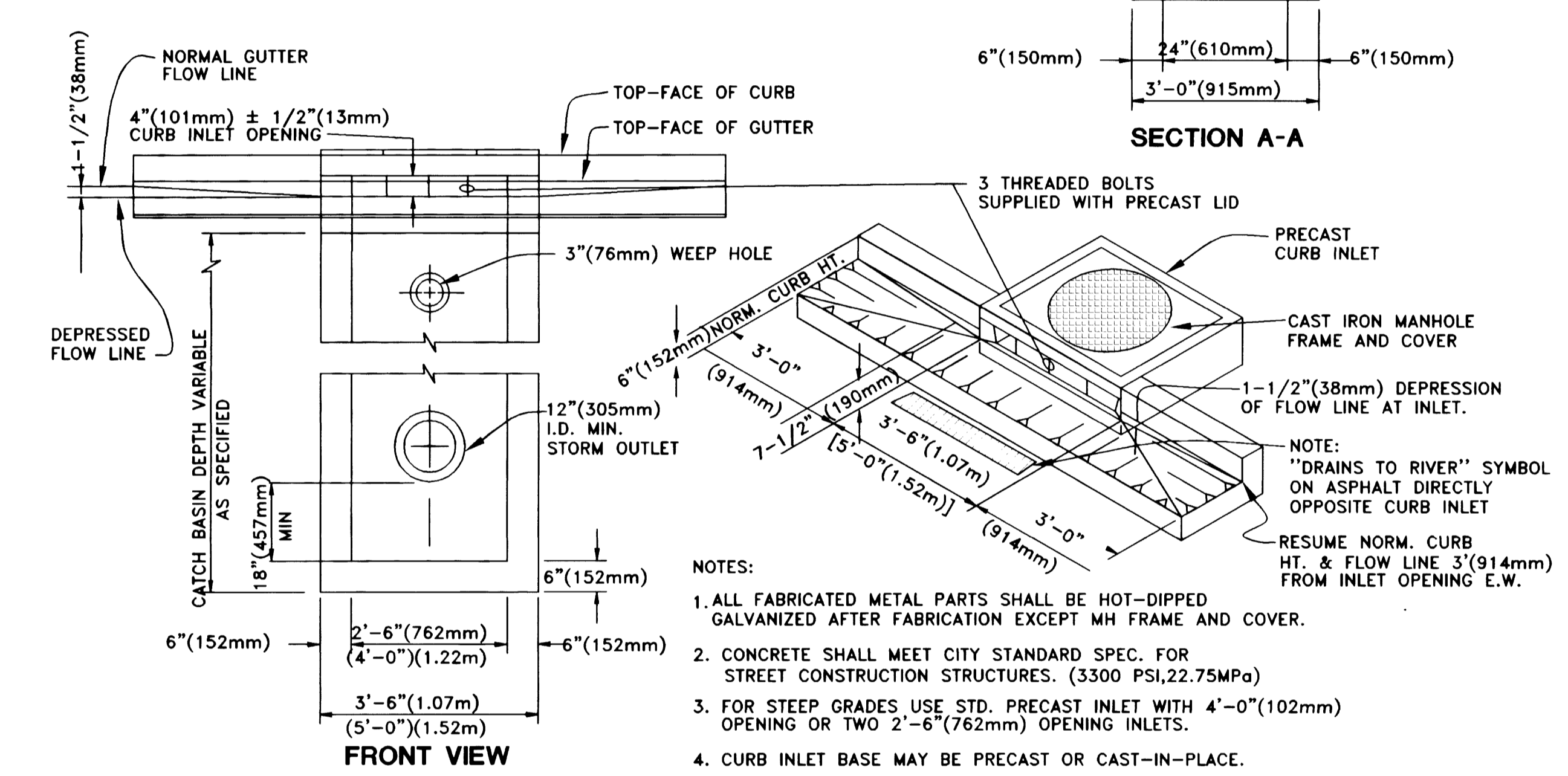
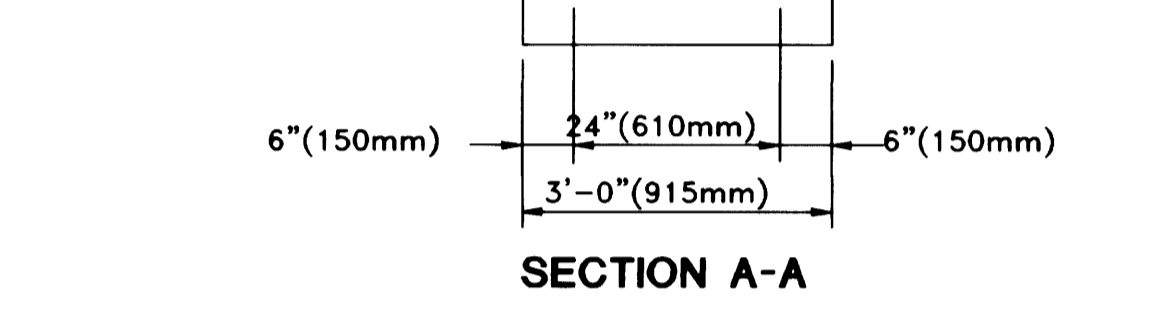
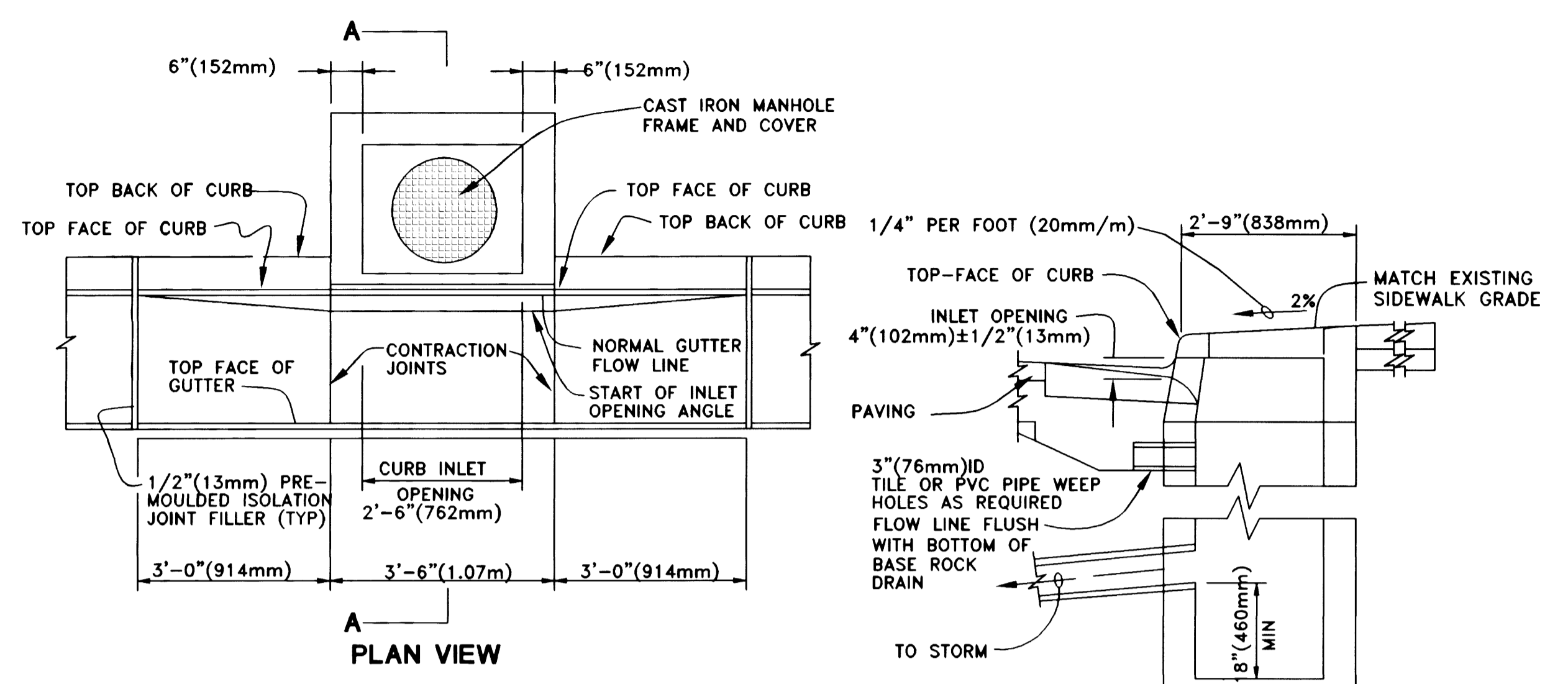


FILED  
 Date: 9-7-2004  
 This survey consists of:  
 Map: 819  
 Corrected:  
 DONOR COUNTY  
 STATE OF OREGON



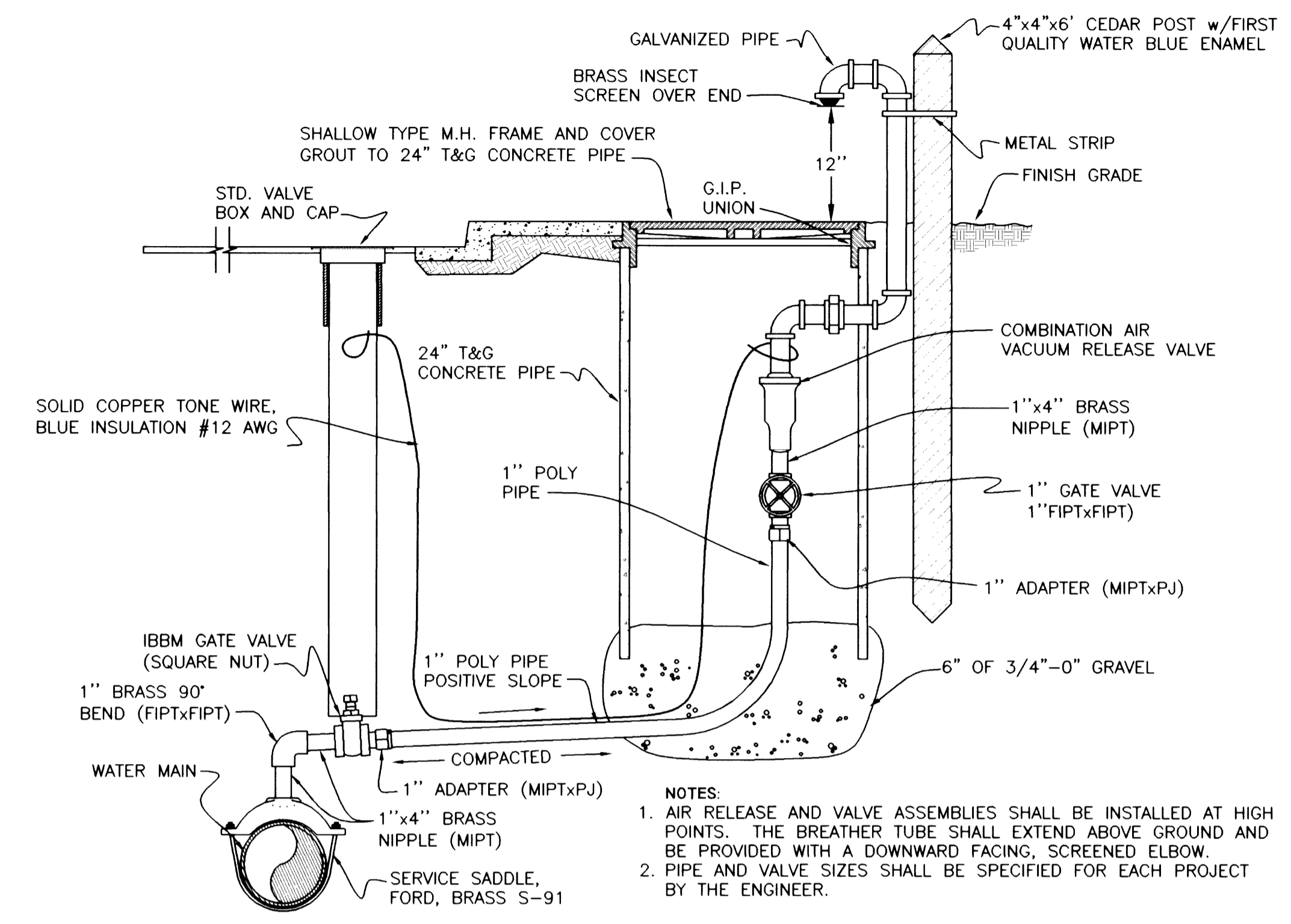
**MAP Engineering, Inc.**  
 740 MAIN STREET  
 ROSEBURG, OREGON 97470  
 PHONE: (541) 229-0365 FAX: (541) 229-0353  
 EMAIL: info@mapengineeringinc.com

PROJECT NAME		ROSEWOOD ESTATES, PHASE VIII	
DRAWING TITLE		LITTLE VALLEY ROAD	
PROJECT NO.		2032-01	
DATE	DWG. SCALE	NO. SCALE	APPROVAL
BY:	DESIGNER: JCB	DRAFTER: JCB	APPROVAL: MAP
REVISION #:	DATE: 06-16-05		
SHEET: 8	OF: 9		



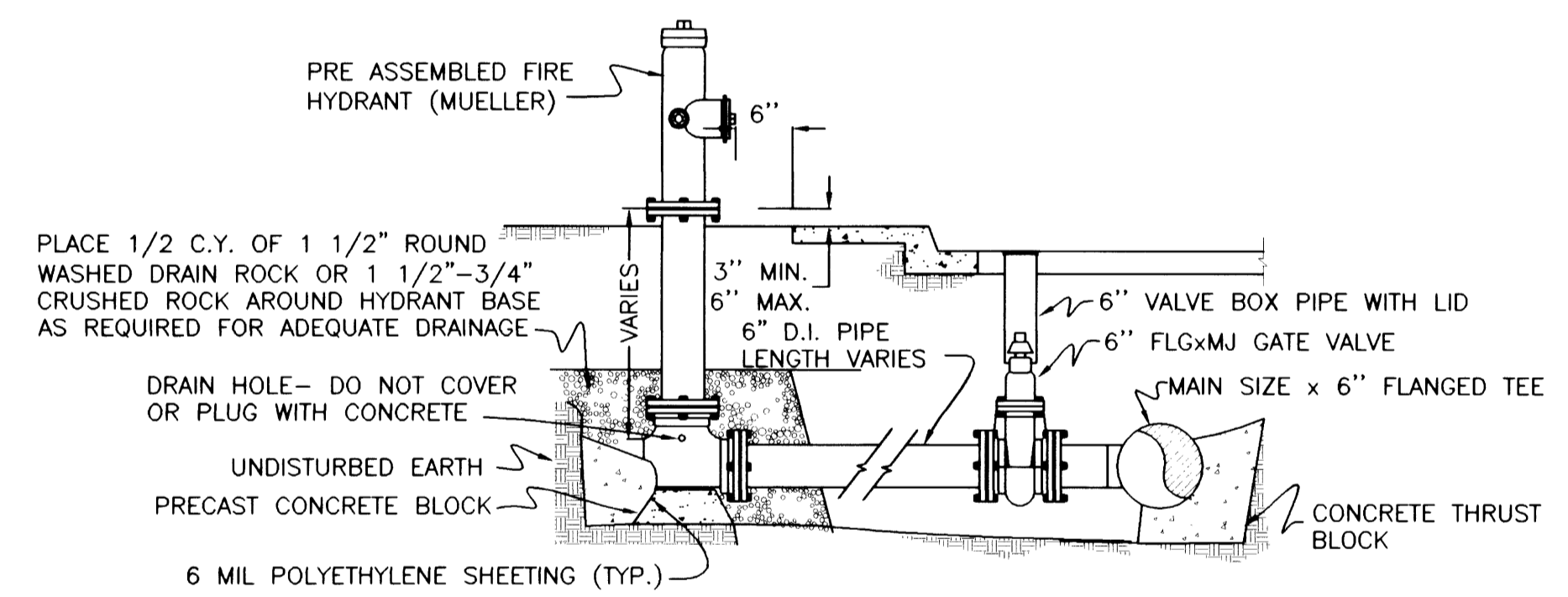
**TYPICAL CURB INLET DETAIL**

- NOTES:
1. ALL FABRICATED METAL PARTS SHALL BE HOT-DIPPED GALVANIZED AFTER FABRICATION EXCEPT MH FRAME AND COVER.
  2. CONCRETE SHALL MEET CITY STANDARD SPEC. FOR STREET CONSTRUCTION STRUCTURES. (3300 PSI, 22.75MPa)
  3. FOR STEEP GRADES, USE STD. PRECAST INLET WITH 4'-0" (102mm) OPENING OR TWO 2'-6" (762mm) OPENING INLETS.
  4. CURB INLET BASE MAY BE PRECAST OR CAST-IN-PLACE.

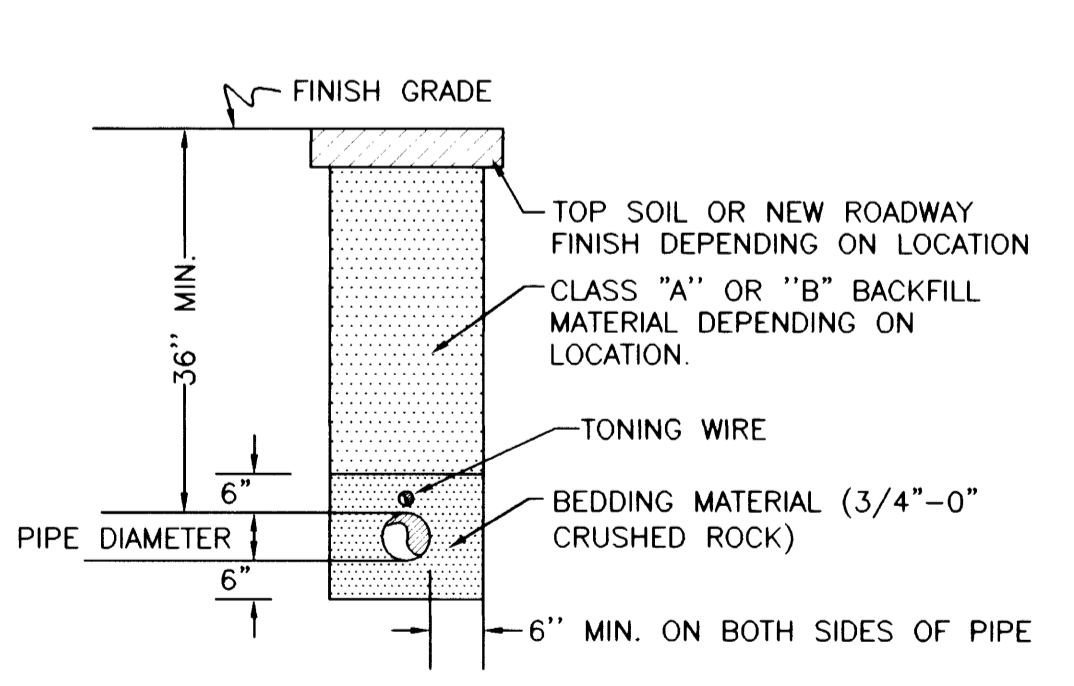
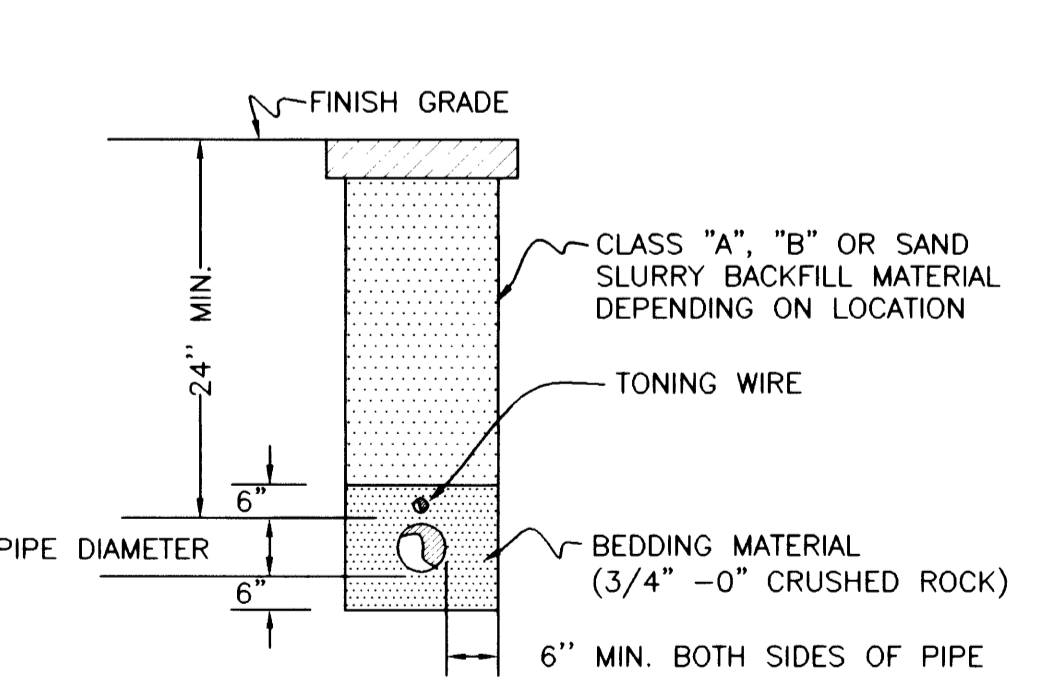
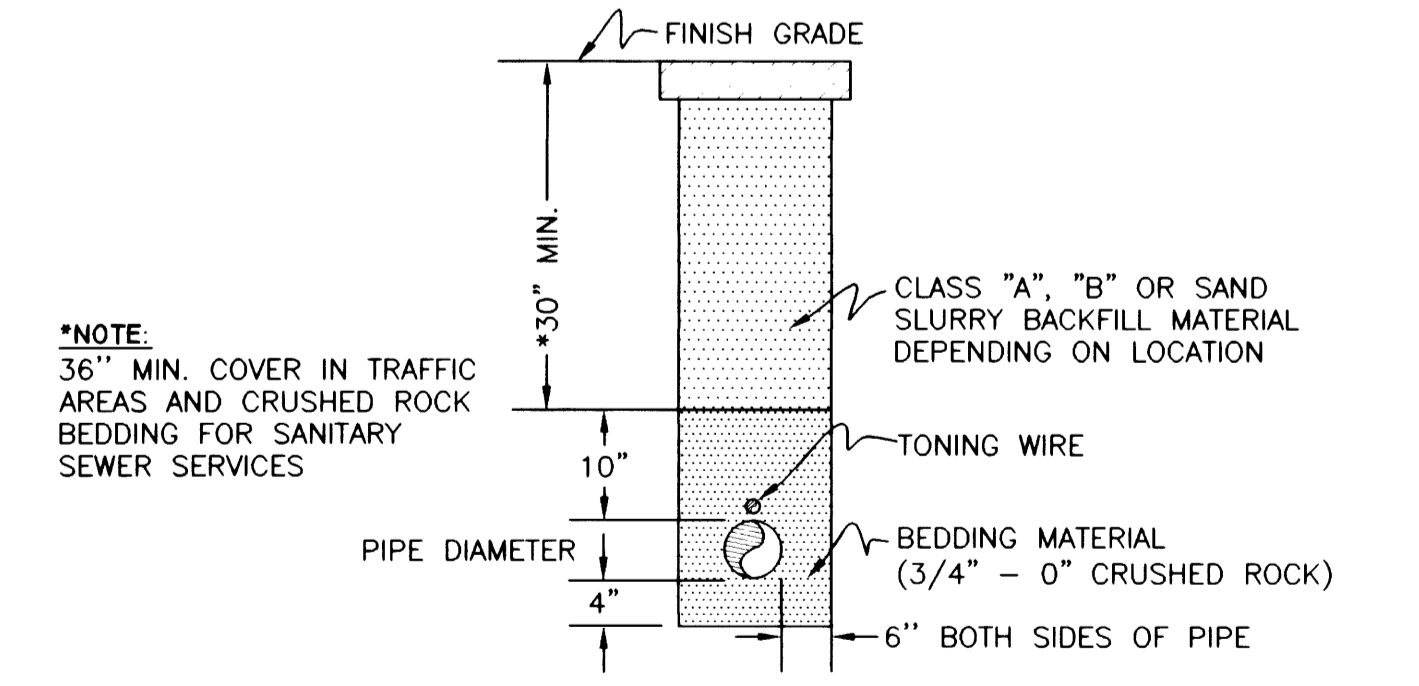
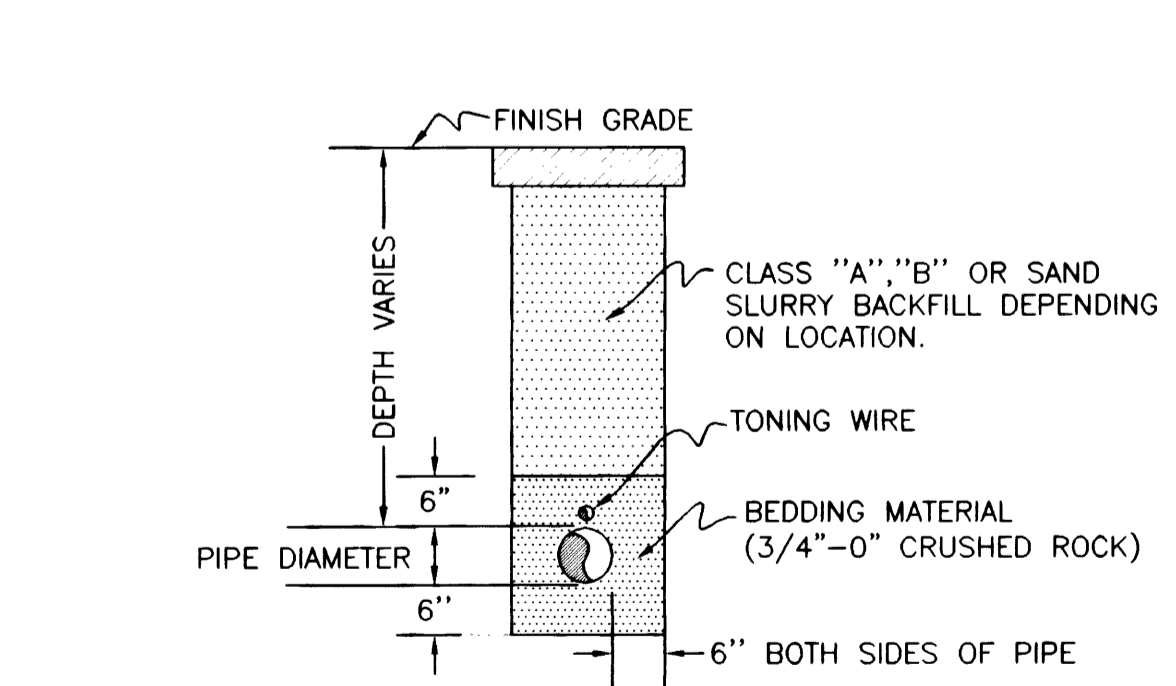


**TYPICAL COMBINATION AIR-RELEASE AND VALVE ASSEMBLY**

- NOTES:
1. AIR RELEASE AND VALVE ASSEMBLIES SHALL BE INSTALLED AT HIGH POINTS. THE BREATHER TUBE SHALL EXTEND ABOVE GROUND AND BE PROVIDED WITH A DOWNWARD FACING, SCREENED ELBOW.
  2. PIPE AND VALVE SIZES SHALL BE SPECIFIED FOR EACH PROJECT BY THE ENGINEER.



**TYPICAL FIRE HYDRANT INSTALLATION**



**TYPICAL STORM LINE TRENCH DETAIL**

**TYPICAL SEWER SERVICE LINE TRENCH DETAIL**

**TYPICAL SERVICE LINE TRENCH DETAIL**

**TYPICAL WATER MAINLINE TRENCH DETAIL**