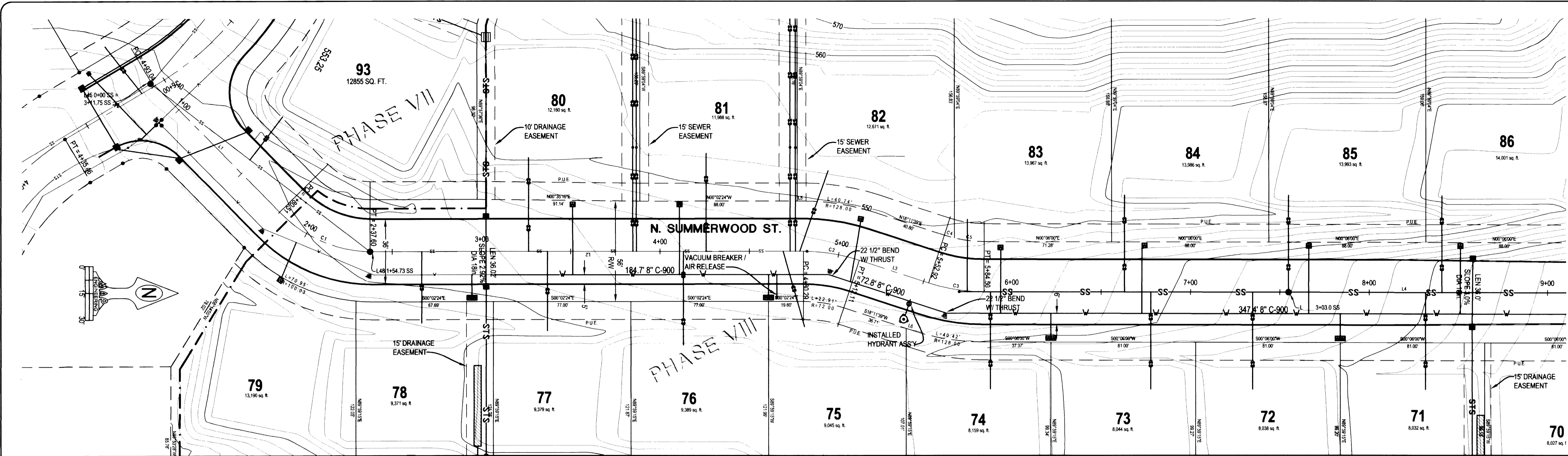


MAP Engineering, Inc.
 740 MAIN STREET
 ROSEBURG, OREGON 97470
 PHONE: (541) 229-0365 FAX: (541) 229-0353
 EMAIL: info@mapengineeringinc.com



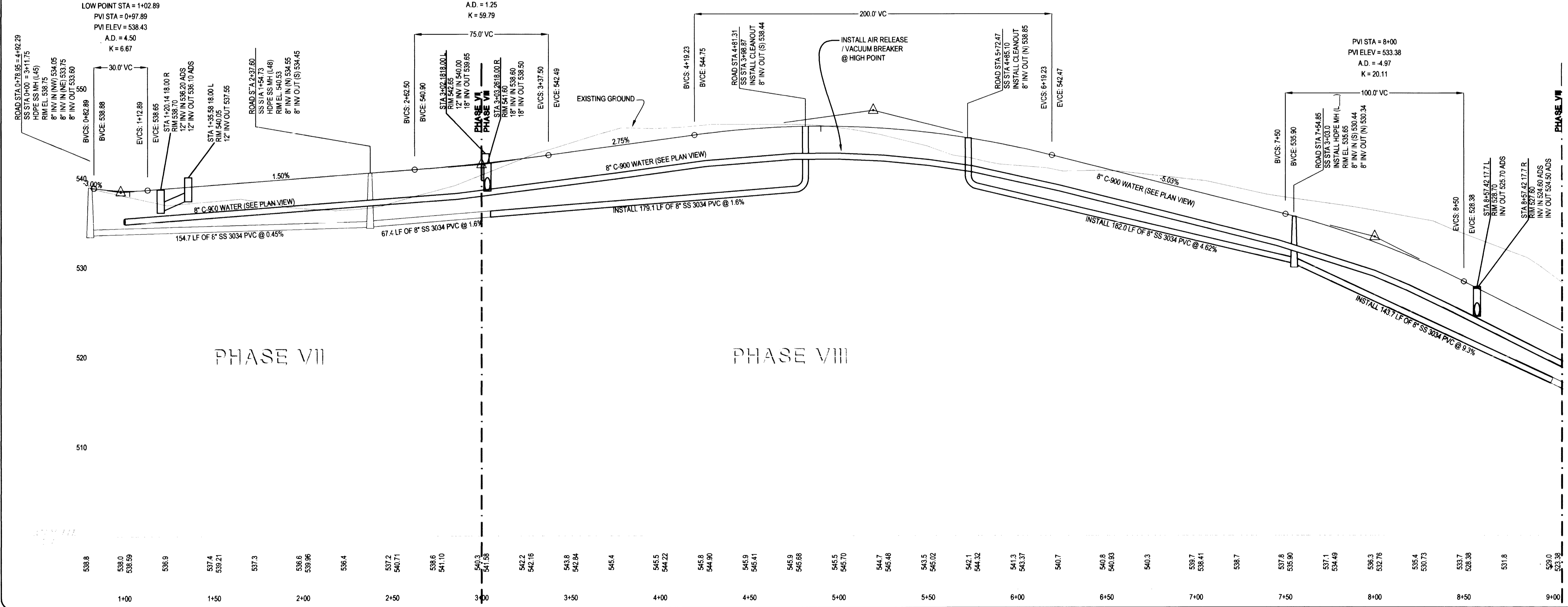
SCALE: 1" = 30' HOR
 1" = 6' VER

LOW POINT ELEV = 538.58
 LOW POINT STA = 1+02.89
 PVI STA = 0+97.89
 PVI ELEV = 538.43
 A.D. = 4.50
 K = 6.67

PVI STA = 3+00
 PVI ELEV = 541.46
 A.D. = 1.25
 K = 59.79

HIGH POINT STA = 4+90.02
 PVI STA = 5+19.23
 PVI ELEV = 547.50
 A.D. = -7.78
 K = 25.70

CALL BEFORE YOU DIG IT
 ONE CALL: (800) 332-2344
 OAR 952-001-0010 THROUGH
 OAR 952-001-0090



REVISION #:	DATE:	BY:	PROJECT NAME:
			ROSEWOOD ESTATES, PHASE VIII
			LITTLE VALLEY ROAD - AS BUILTS
			CONSTRUCTION PLANS
			PLAN / PROFILE (SOUTH)
			PROJECT NO.: 2032-01
			DWG SCALE: 1" = 30' HOR
			DATE: 06-16-06
			DESIGNER: _____
			DRAFTER: _____
			APPROVAL: MAP
SHEET: 3	OF: 9	PROJECT NO.: 2032-01	DWG SCALE: 1" = 30' HOR

00200035