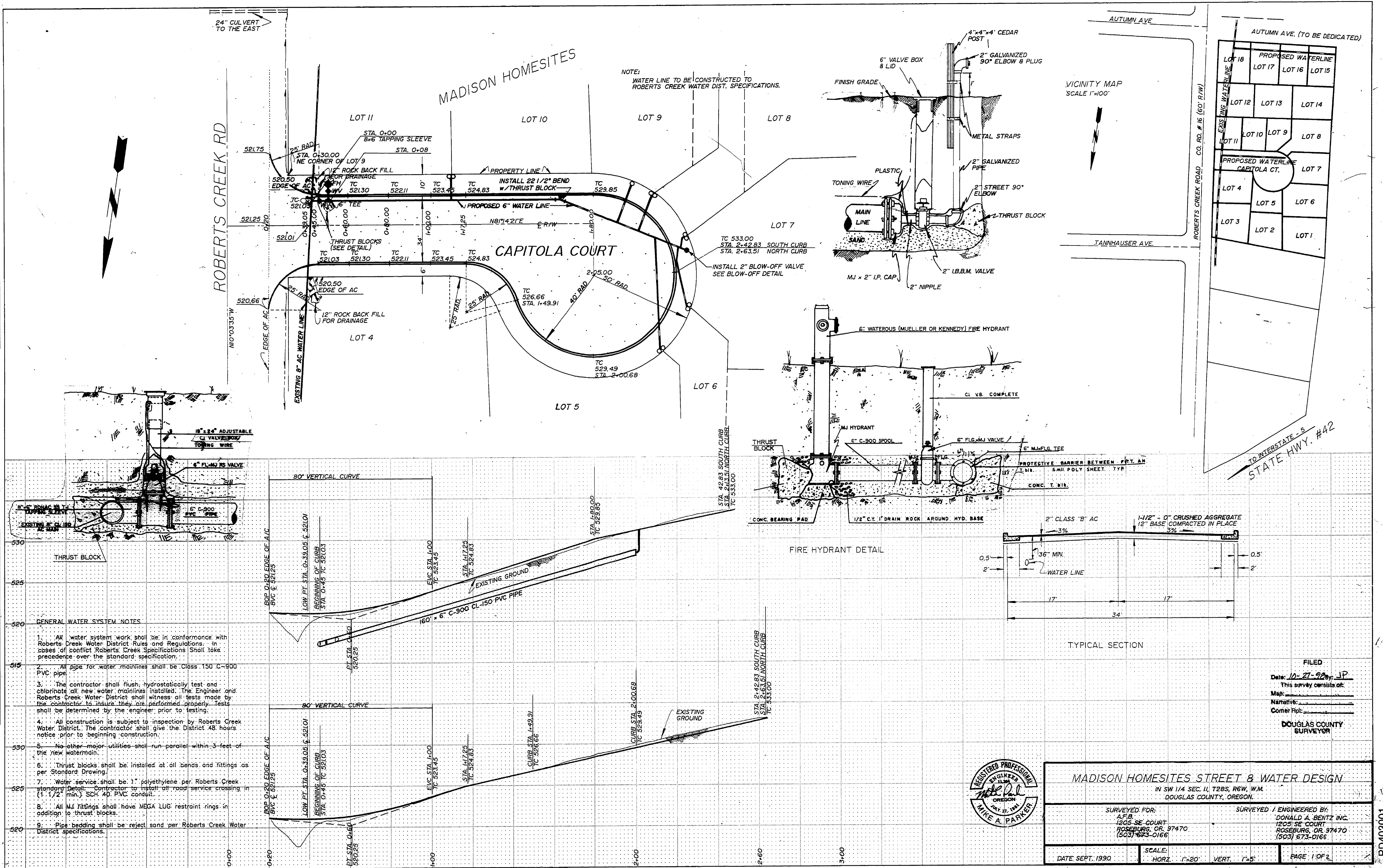


DATE	
BY	
REVISIONS	
NO.	
DESCRIPTION	
DATE	
BY	
REVISIONS	
NO.	
DESCRIPTION	
DATE	
BY	
REVISIONS	
NO.	
DESCRIPTION	
DATE	
BY	
REVISIONS	
NO.	
DESCRIPTION	
DATE	
BY	
REVISIONS	
NO.	
DESCRIPTION	

DATE	
BY	
REVISIONS	
NO.	
DESCRIPTION	
DATE	
BY	
REVISIONS	
NO.	
DESCRIPTION	
DATE	
BY	
REVISIONS	
NO.	
DESCRIPTION	
DATE	
BY	
REVISIONS	
NO.	
DESCRIPTION	



<b>MADISON HOMESITES STREET &amp; WATER DESIGN</b>	
IN SW 1/4 SEC. 11, T28S, R6W, W.M. DOUGLAS COUNTY, OREGON.	
SURVEYED FOR: A.F.B. 1205 SE COURT ROSEBURG, OR. 97470 (503) 673-0166	SURVEYED / ENGINEERED BY: DONALD A. BENTZ INC. 1205 SE COURT ROSEBURG, OR. 97470 (503) 673-0166
DATE SEPT. 1990	SCALE: HORZ. 1"=20' VERT. 1"=5'
PAGE 1 OF 2	

PLATE 4-SINGLE PLAN AND CROSS SECTION-FULL DOT  
PRINTED IN U.S.A.

REVISED WATERLINE 4-2-96  
AS-BUILTS 10/9/98

90-128

CO. RD. #403

RD403001