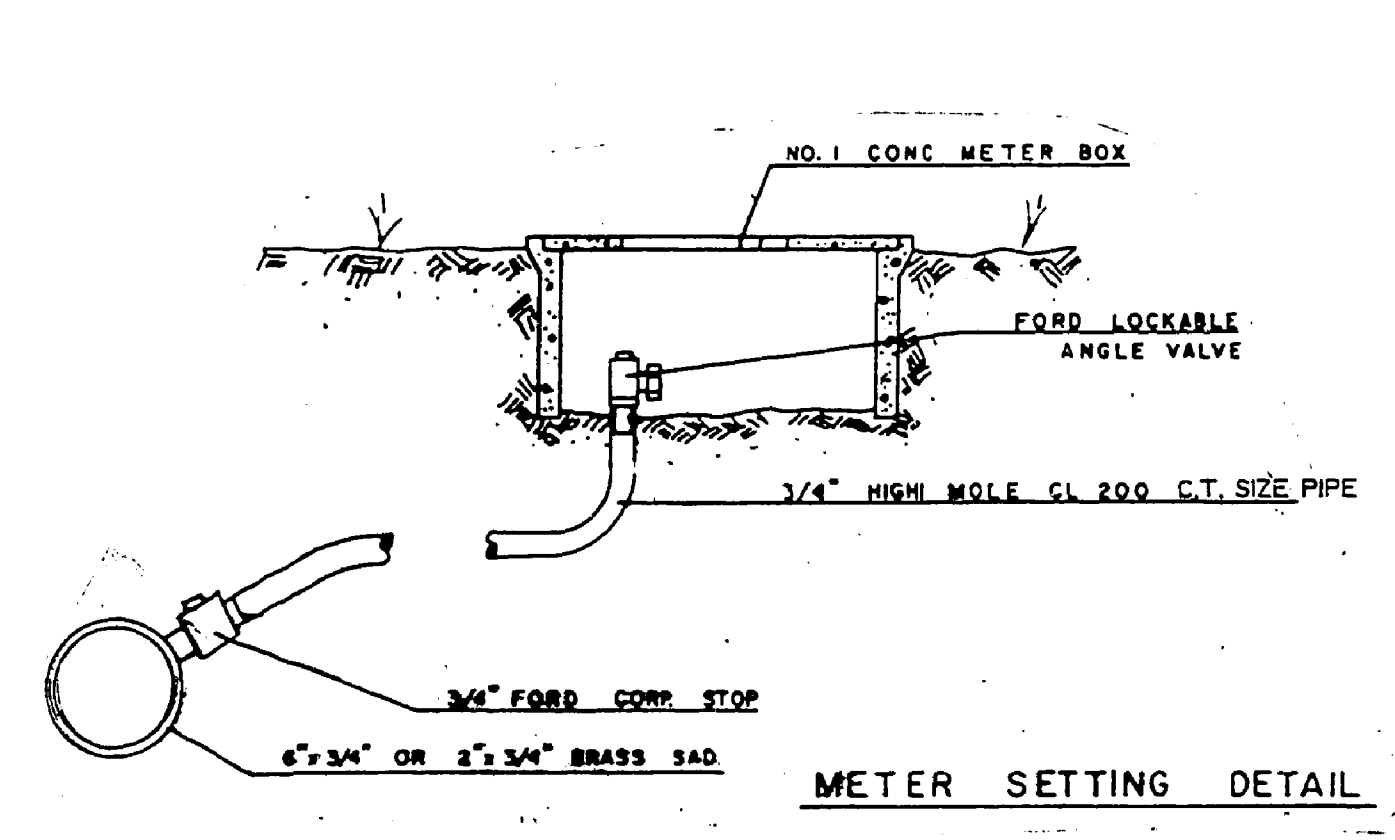
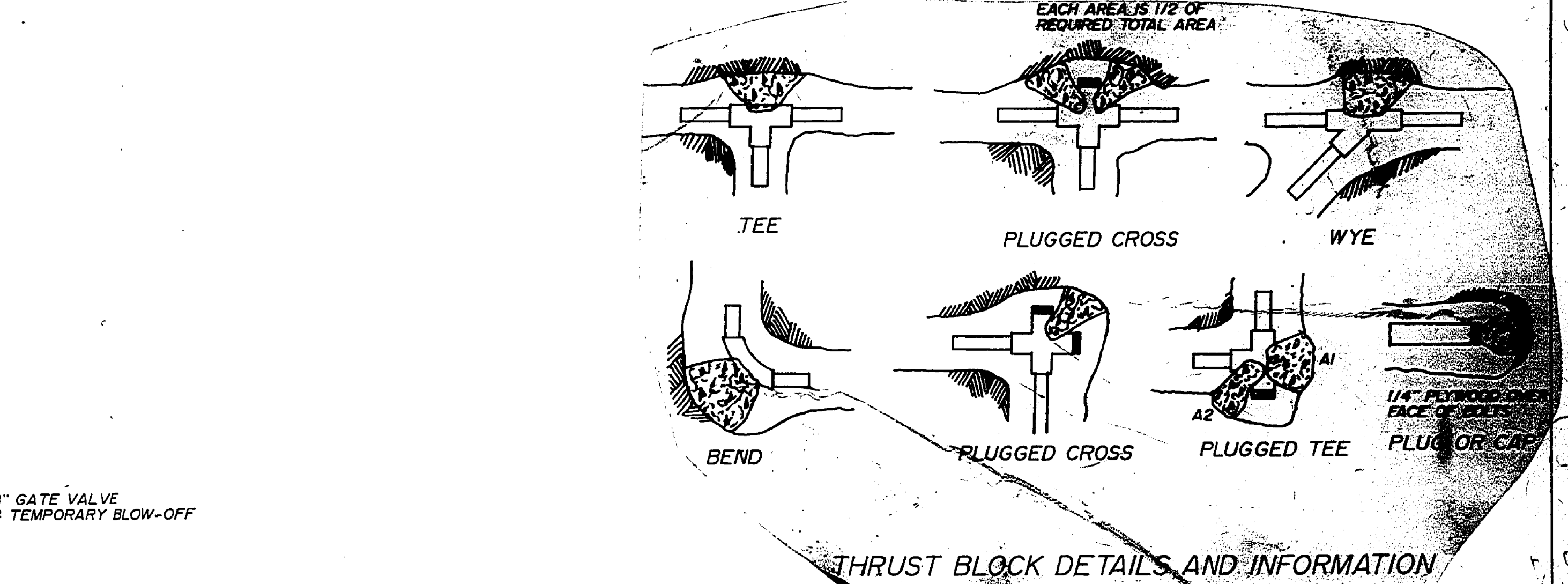
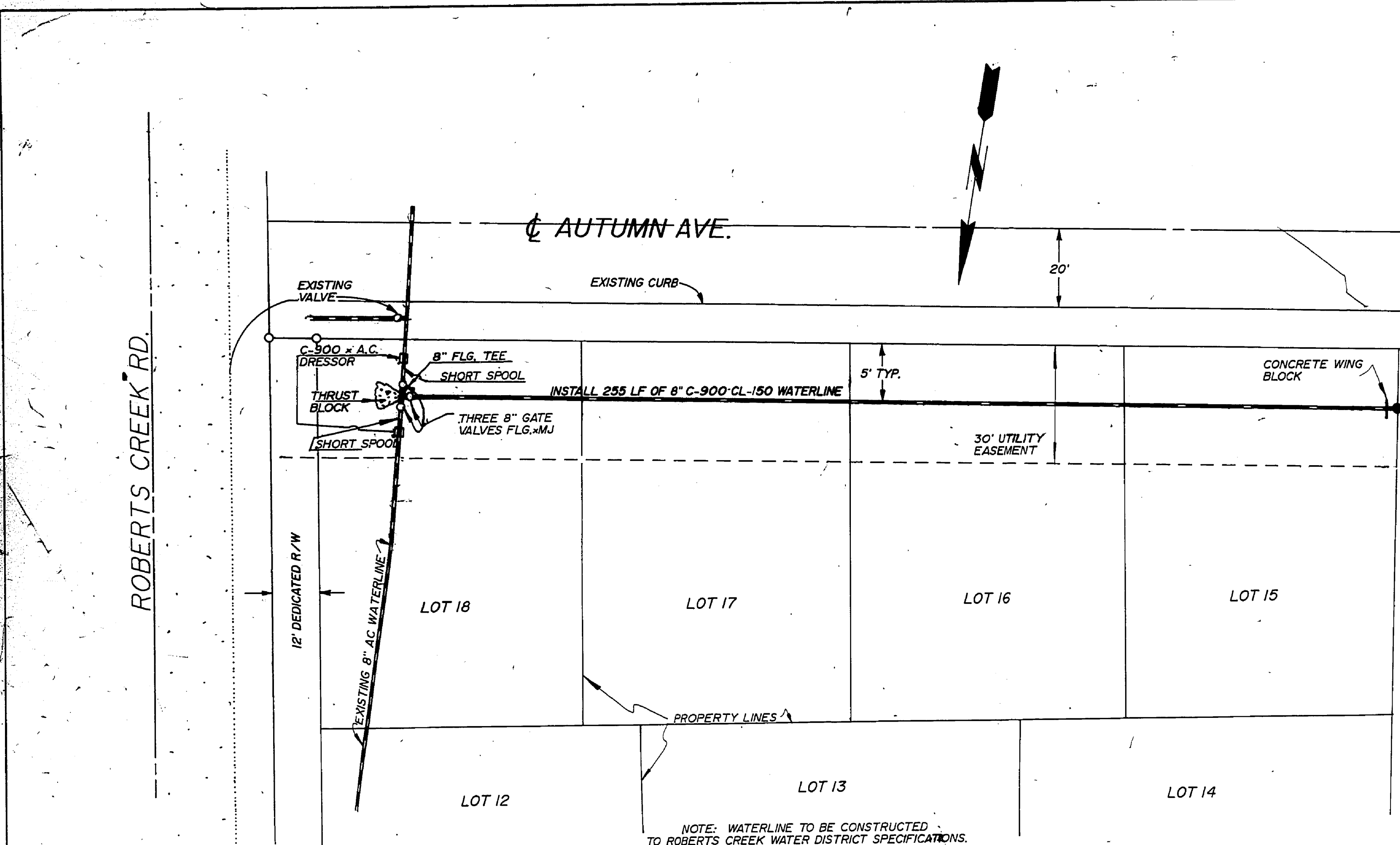


DATE	
BY	
REVISIONS	
NO.	
DESCRIPTION	
DATE	
BY	
REVISIONS	
NO.	
DESCRIPTION	
DATE	
BY	
REVISIONS	
NO.	
DESCRIPTION	

DATE	
BY	
REVISIONS	
NO.	
DESCRIPTION	
DATE	
BY	
REVISIONS	
NO.	
DESCRIPTION	
DATE	
BY	
REVISIONS	
NO.	
DESCRIPTION	



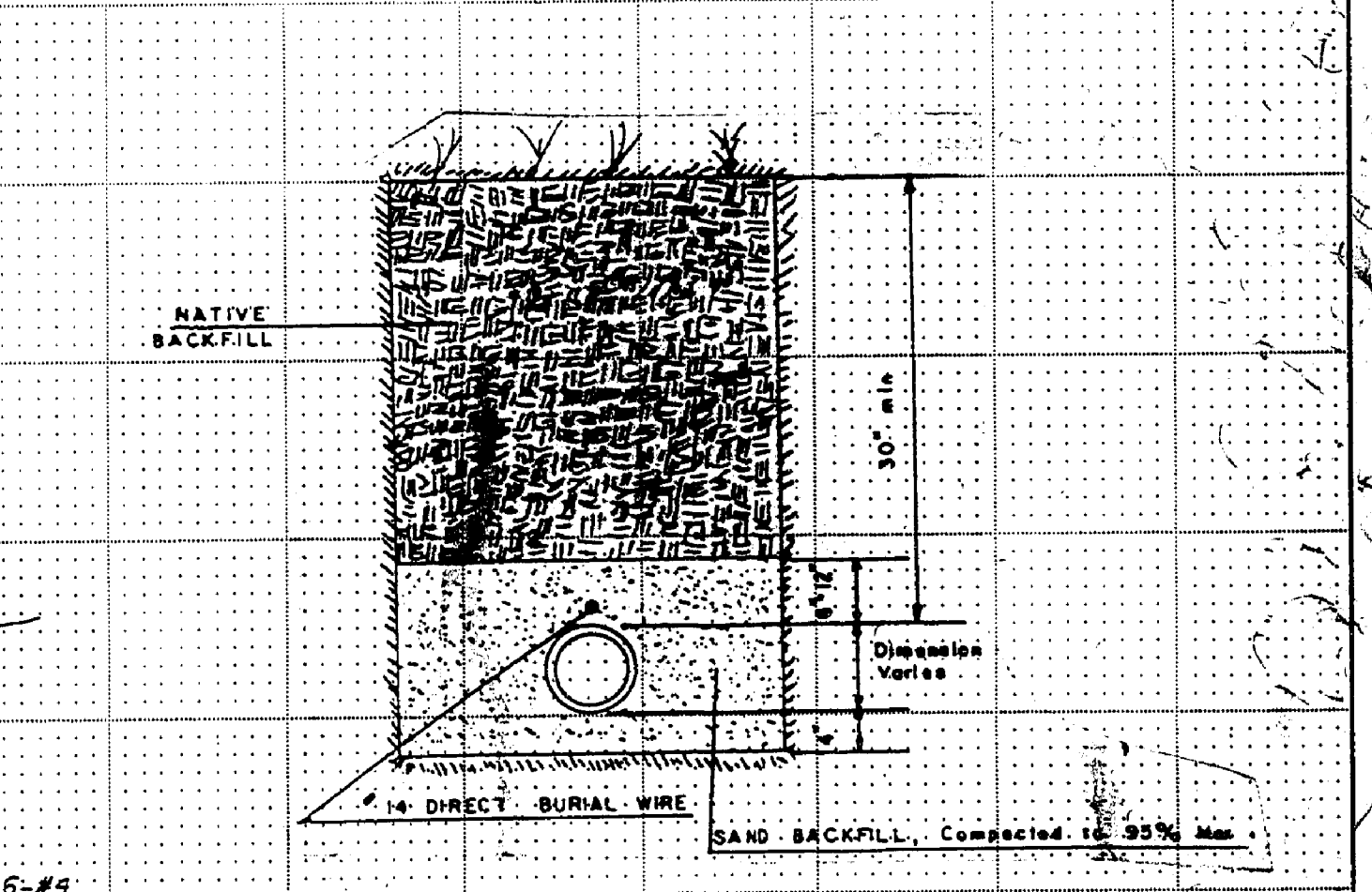
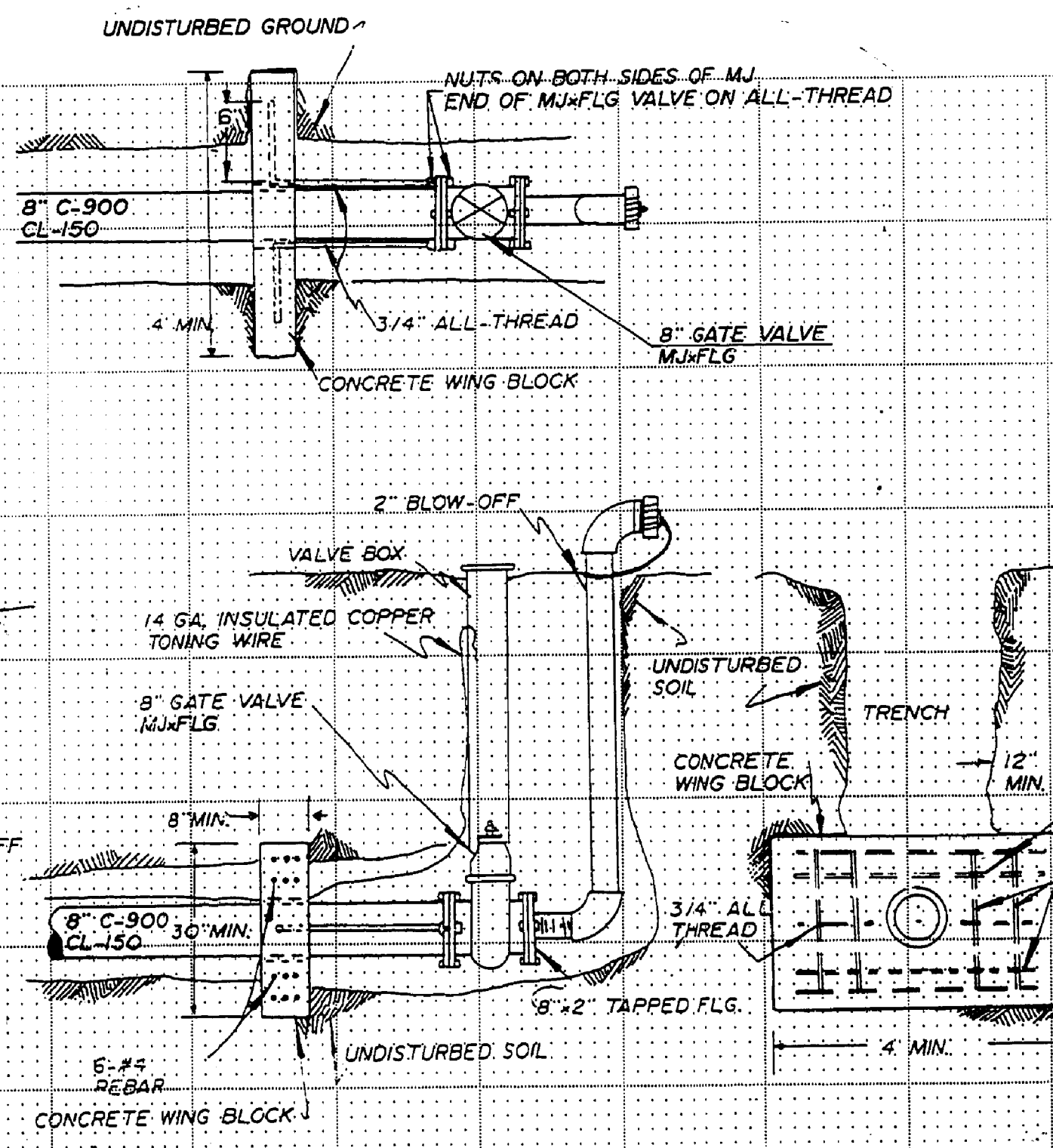
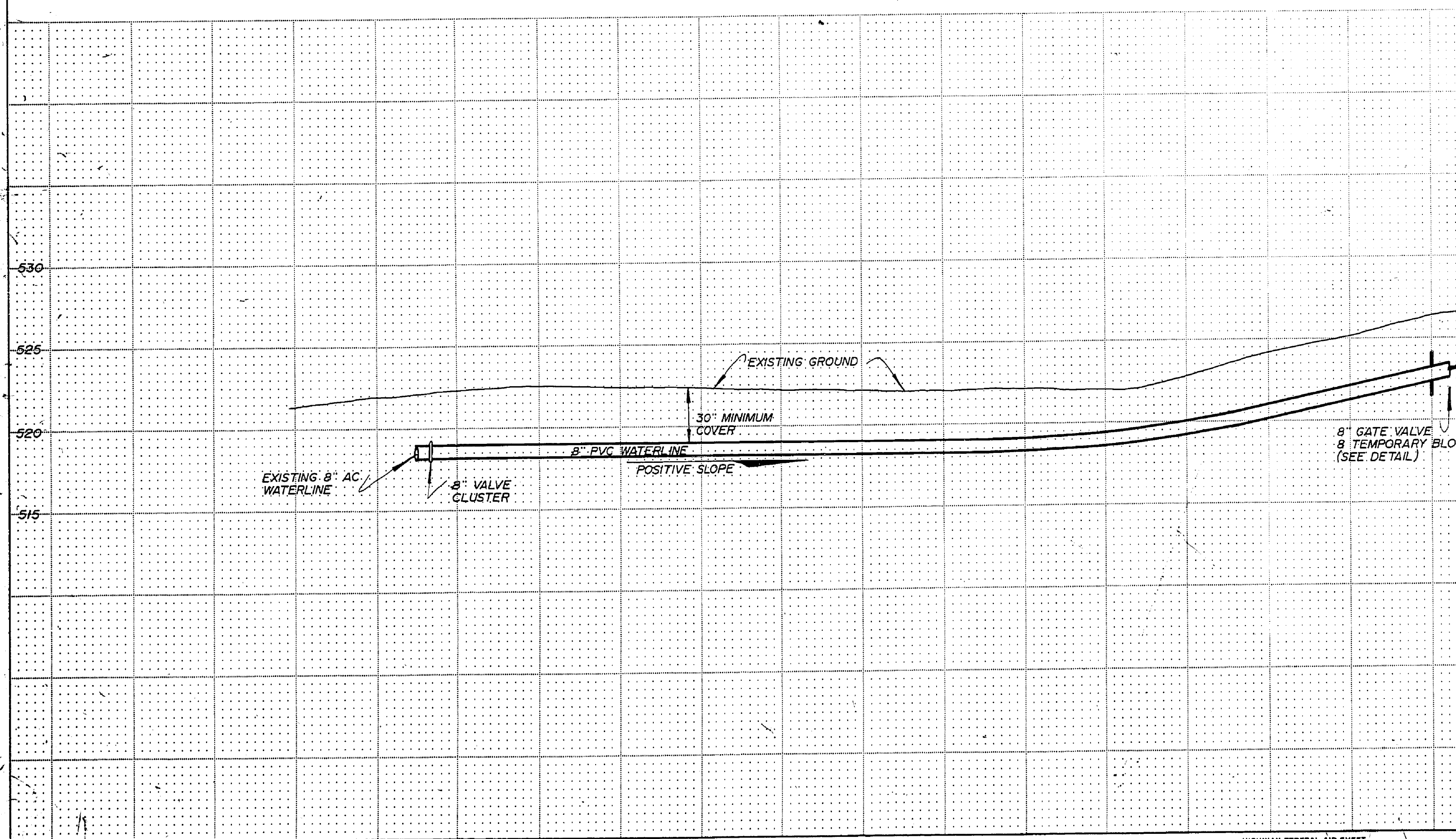
NOTES:

- CONCRETE THRUST BLOCKING TO BE POURED AGAINST UN-DISTURBED EARTH.
- KEEP CONCRETE CLEAR OF JOINTS AND ACCESSORIES.
- CENTER OF GRAVITY OF THRUST BLOCK SHALL BE APPLIED TO CENTER OF PIPE.

BEARING AREA OF THRUST BLOCKS (in sq. ft.)

FITTING SIZE	TEE, WYE PLUG OR CAP	90° BEND CROSS	TEE PLUGGED ON RUN	45° BEND	22-1/2° BEND	11-1/4° BEND
6	5.7	8.1	5.7	4.4	2.2	1.1
8	9.9	13.9	9.9	7.5	3.8	1.9

NOTE: ABOVE BEARING AREAS BASED ON TEST PRESSURE OF 225 PSI AND AN ALLOWABLE SOIL BEARING STRESS OF 1500 lbs/sq. ft. TO COMPUTE BEARING AREAS FOR DIFFERENT TEST PRESSURES, USE THE FOLLOWING EQUATION: BEARING AREA = (TEST PRESSURE / 225) \* SOIL BEARING STRESS (TABLE VALUE)



**MADISON HOMESITES WATER DESIGN**  
 IN SW 1/4 SEC. 11, T38S, R6W, W.M., DOUGLAS COUNTY, OREGON.

SURVEYED FOR: A.F.B. 1205 SE COURT ROSEBURG, OR 97470 (503) 673-0166	SURVEYED / ENGINEERED BY: DONALD A. BENTZ INC. 1205 SE COURT ROSEBURG, OR 97470 (503) 673-0166
DATE: SEPT. 1990	SCALE: HORZ. 1"=20' VERT. 1"=5'
PAGE 2 OF 2	