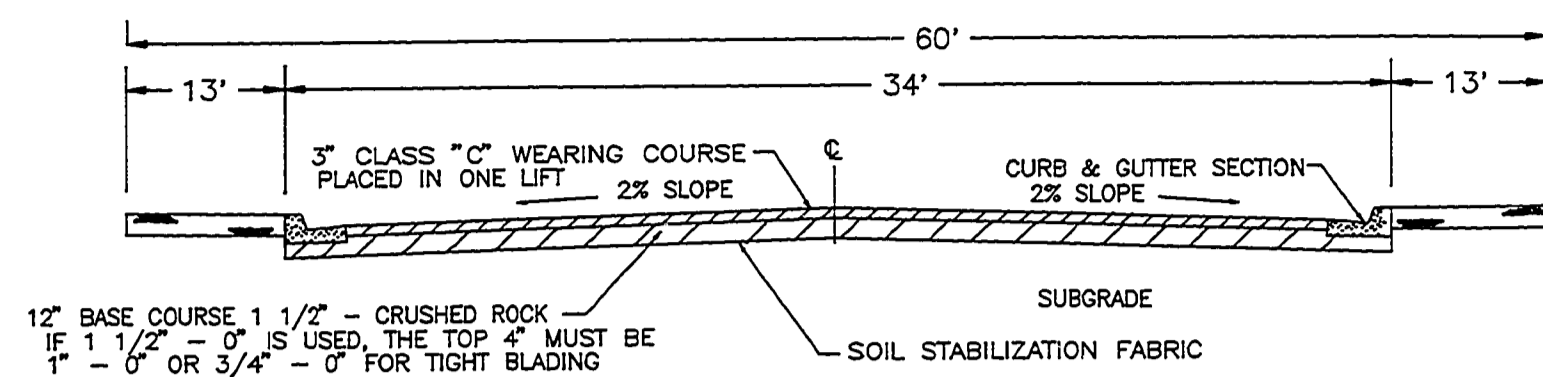
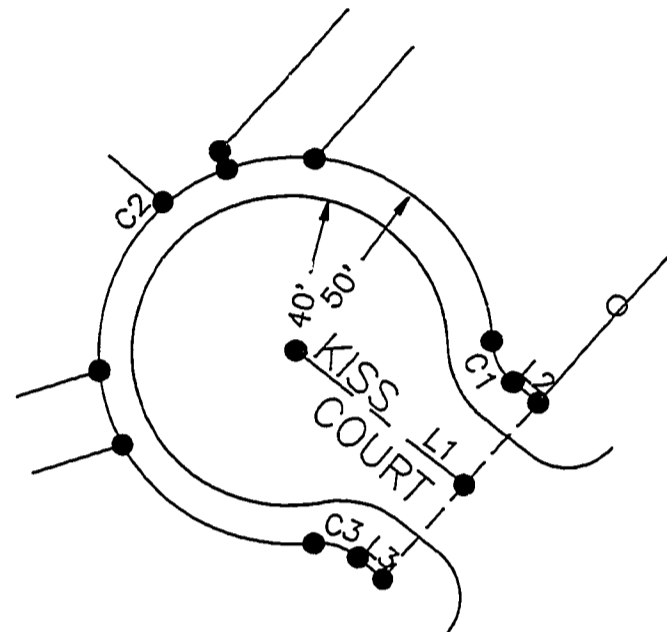


TYPICAL ASPHALT CONCRETE CROWN SECTION



12" BASE COURSE 1 1/2" - CRUSHED ROCK
IF 1 1/2" - 0" IS USED, THE TOP 4" MUST BE
1" - 0" OR 3/4" - 0" FOR TIGHT BLADING

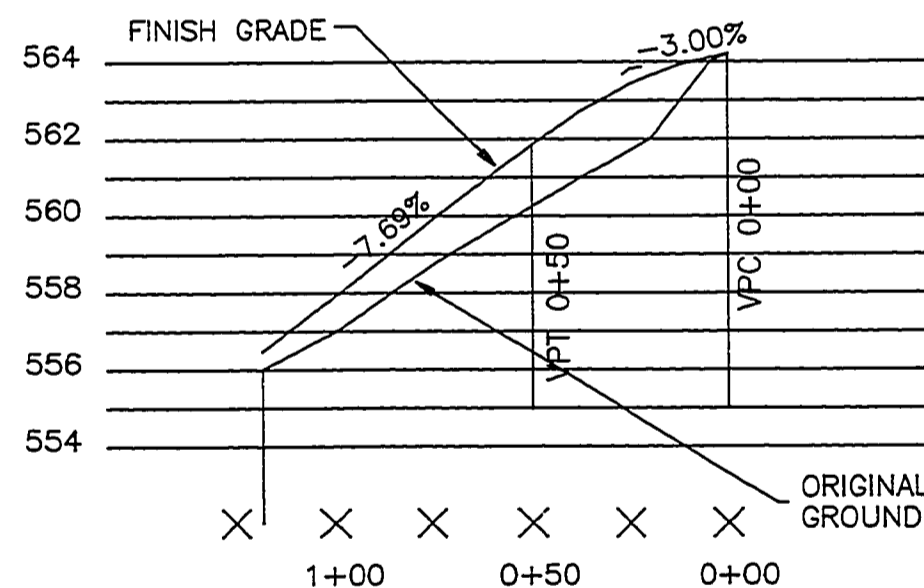


END PROJECT
EDGE OF CUL DE SAC
STA 1+18.00
ELEV 556.50

VPI 0+25
ELEV 563.65
50' VC

BEGIN PROJECT
VPC 0+00
ELEV 564.40

VPT 0+50
ELEV 561.73



KISS COURT PROFILE

SCALE: HOR 1 IN = 50 FT
VERT 1 IN = 5 FT

KISS COURT DESCRIPTION

LINE DATA

NUMBER	DIRECTION	DISTANCE
L1	N50°43'13"W	55.22'
L2	N48°41'31"W	8.18'
L3	S48°41'31"E	8.56'

CURVE DATA

NO	DELTA	CHORD BEARING	T'	R'	L'	LC'
C1	46°11'13"	N25°35'55"W	6.40	15.00	12.09	11.77
C2	27°22'26"	S41°18'29"W	47.97	50.00	237.69	69.23
C3	46°11'13"	S71°47'07"E	6.40	15.00	12.09	11.77

AS-BUILT PLANS



SCALE: 1 IN = 50 FT
CONTOUR INTERVAL 1 FT

FILED

Date: 9-23-97 By: J.P.

This survey consists of:

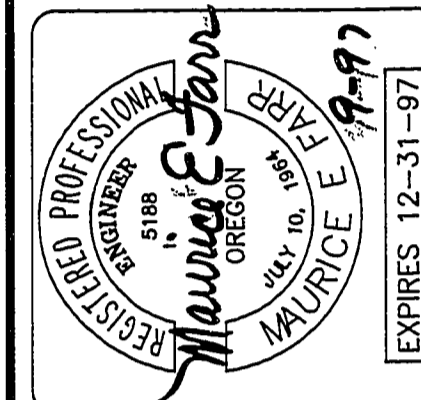
Map: Co. Rd. # 401

Narrative:

Corner Rpt:

DOUGLAS COUNTY
SURVEYOR

PLANS PREPARED BY
MAURICE E. FARR
PROFESSIONAL ENGINEER
1960 SW BURDETTE DRIVE
ROSEBURG, OR 97470
PH (541)679-6598

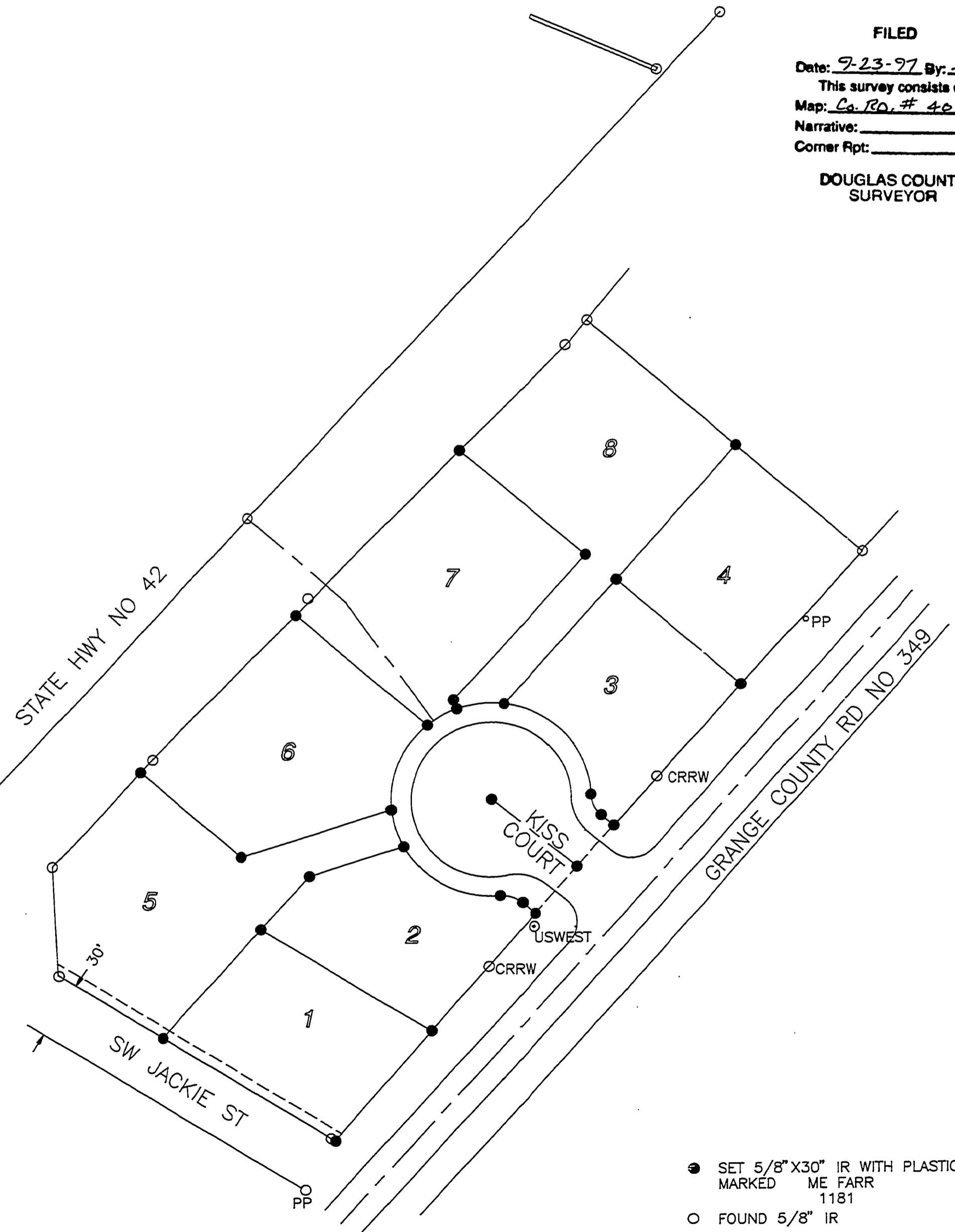


K.I.S.-GRANGE SUBDIVISION
GRANGE ROAD
ROSEBURG, OR

STREET
CONSTRUCTION
DETAILS

AUGUST 1997

SHEET
2 OF 6



● SET 5/8" X 30" IR WITH PLASTIC CAP
MARKED ME FARR
1181

○ FOUND 5/8" IR

CO. RD. #401

00000002

CO. RD. #401 83

Co. RD # 401

MP 0 00 - 0.02 Street

00000002