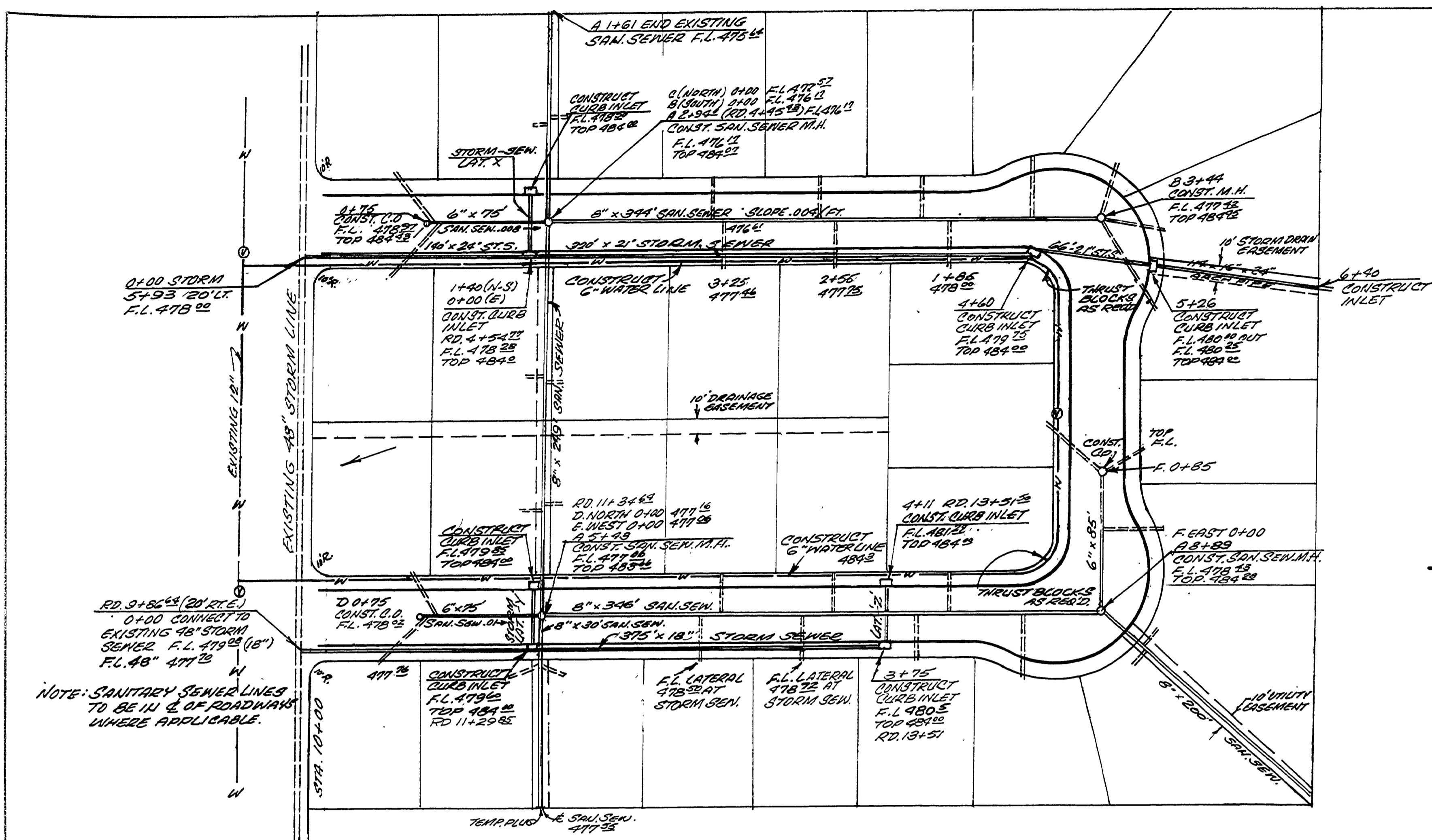


FILED

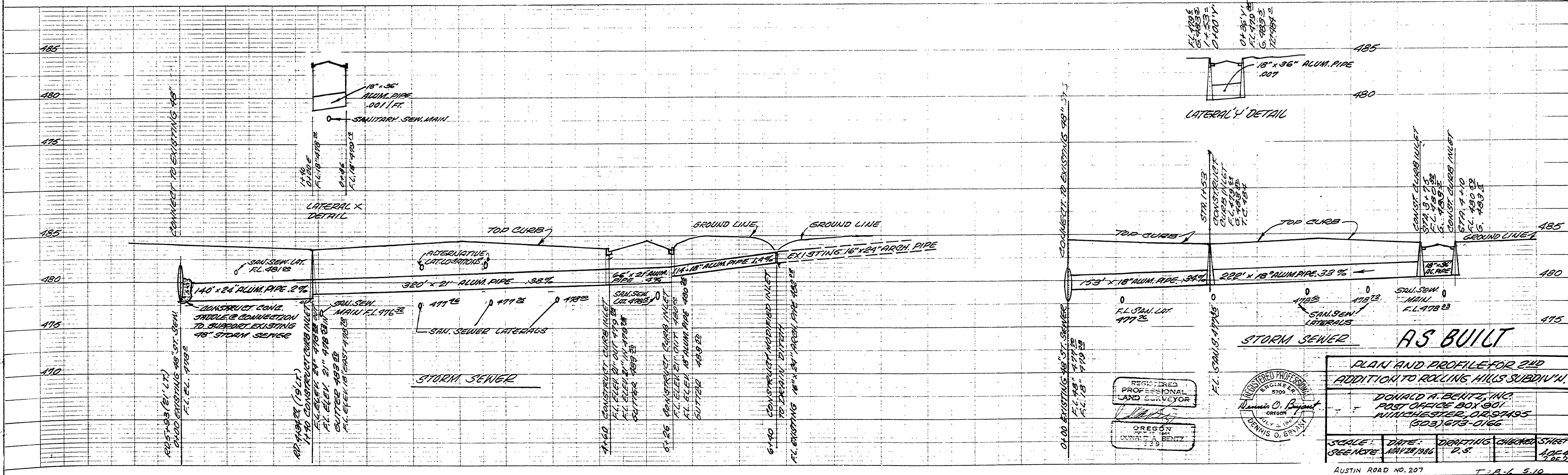
AUG 10 1987

COUNTY SURVEYOR
DELAWARE COUNTY, ORE.



NOTE: FOR LATERAL LOCATIONS
CONTACT GREEN SANITARY
DISTRICT.

SCALE: 1" = 50' HORIZ.
1" = 5' VERT.



REGISTERED PROFESSIONAL
LAND SURVEYOR
DONALD A. BENITZ, INC.
DENNIS O. BENITZ

REGISTERED PROFESSIONAL
ENGINEER
DENNIS O. BENITZ

PLAN AND PROFILE FOR 210
ADDITION TO ROLLING HILLS SUBDIVISION

DONALD A. BENITZ, INC.
POST OFFICE BOX 901
WINDHESTER, OREGON 97145
(503) 478-0166

SCALE: DATE: DRAFTING CHECKED SHEET
SEE NOTE MAY 29, 1986 P.S. 102-A
AUSTIN ROAD NO. 207 T-2-B-6 510

BY CLARA CHASE
MOLE BOOK
BETA

BY CLARA CHASE
MOLE BOOK
BETA

RD207PRO