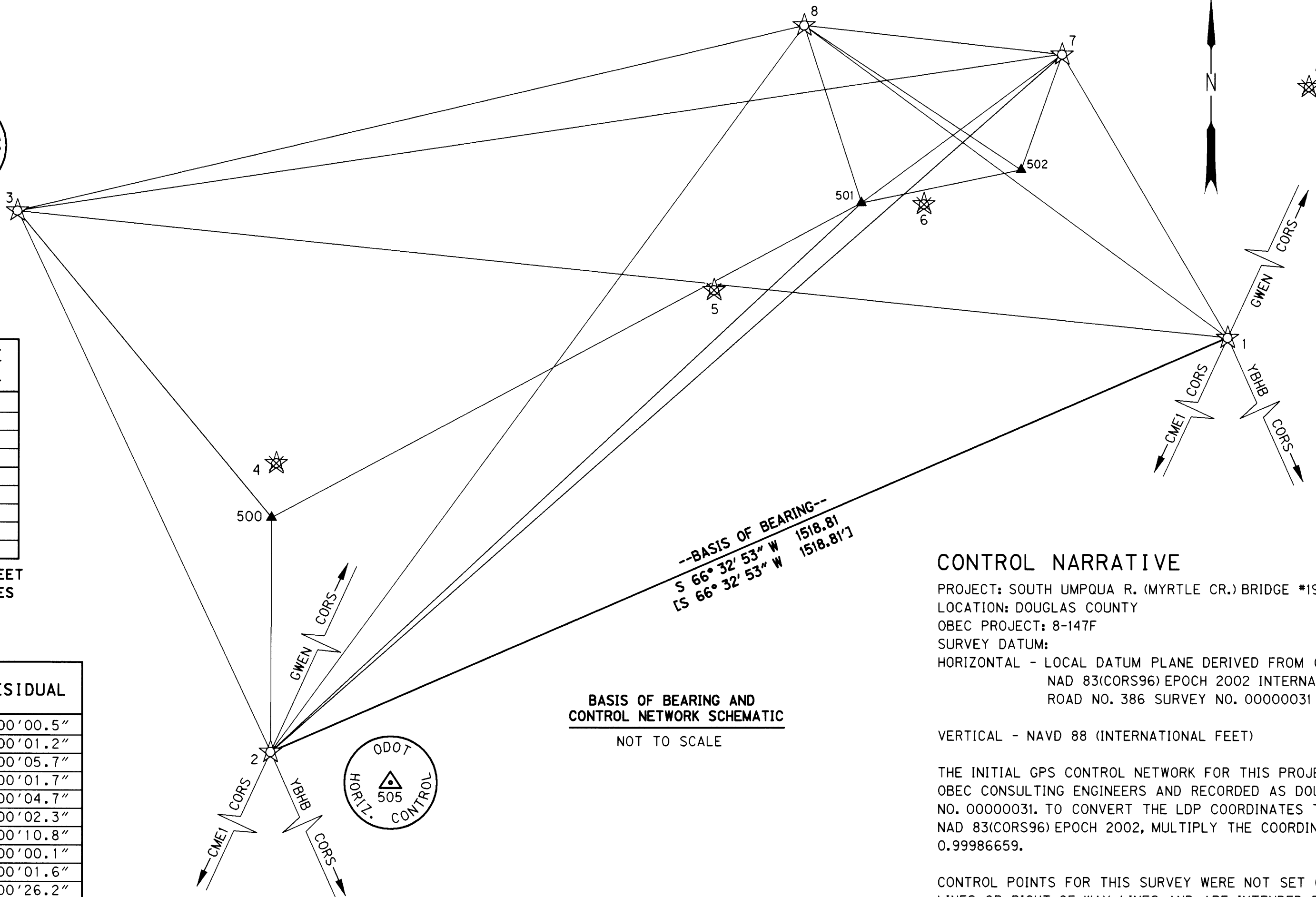
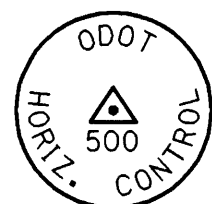


N.W. & N.E. 1/4, SEC. 28, T.29 S., R.5 W., W.M.

FILED  
 Date: 10/30/2007 By: JC  
 This survey consists of: 4 PGS  
 Map: CO. RD. 386  
 Narrative: \_\_\_\_\_  
 Corner Rpt: \_\_\_\_\_  
 DOUGLAS COUNTY  
 SURVEYOR



RESIDUALS FOR DISTANCES

| BETWEEN | DISTANCE** | DISTANCE | RESIDUAL |
|---------|------------|----------|----------|
| 500 3   | 581.03'    | 581.03'  | 0.00'    |
| 500 501 | 973.48'    | 973.48'  | 0.00'    |
| 500 2   | 340.27'    | 340.27'  | 0.01'    |
| 501 2   | 1174.59'   | 1174.59' | 0.01'    |
| 501 7   | 367.44'    | 367.44'  | 0.00'    |
| 501 8   | 271.97'    | 271.97'  | 0.00'    |
| 501 502 | 238.58'    | 238.58'  | 0.00'    |
| 502 7   | 181.28'    | 181.28'  | 0.00'    |
| 502 8   | 381.41'    | 381.41'  | 0.00'    |

\*\* CALCULATED HORIZONTAL DISTANCES IN FEET DERIVED FROM THE MEASURED SLOPE DISTANCES

RESIDUALS FOR ANGLES

| BACKSIGHT STATION | OCCUPIED STATION | FORESIGHT STATION | RESIDUAL |
|-------------------|------------------|-------------------|----------|
| 2 500 3           | 0°00'00.5"       |                   |          |
| 2 500 501         | 0°00'01.2"       |                   |          |
| 3 500 2           | -0°00'05.7"      |                   |          |
| 3 500 501         | -0°00'01.7"      |                   |          |
| 500 501 2         | 0°00'04.7"       |                   |          |
| 500 501 7         | 0°00'02.3"       |                   |          |
| 500 501 8         | 0°00'10.8"       |                   |          |
| 500 501 502       | -0°00'00.1"      |                   |          |
| 501 502 7         | 0°00'01.6"       |                   |          |
| 501 502 8         | 0°00'26.2"       |                   |          |
| 7 502 8           | 0°00'30.3"       |                   |          |
| 7 502 501         | 0°00'02.1"       |                   |          |

1.96 SIGMA (95%) CONFIDENCE LEVEL LIMITS

| POINT NO. | SEMI MAJOR | SEMI MINOR | ORIENTATION* |
|-----------|------------|------------|--------------|
| 500       | 0.01'      | 0.01'      | 336°54'36"   |
| 501       | 0.01'      | 0.01'      | 328°47'53"   |
| 502       | 0.01'      | 0.01'      | 46°34'23"    |

\* NORTH AZIMUTH

FIXED POINTS NOT SUBJECT TO LEAST SQUARES ADJUSTMENT OR CONFIDENCE LEVEL ANALYSIS: 1, 2, 3, 7, & 8

BASIS OF BEARING AND CONTROL NETWORK SCHEMATIC NOT TO SCALE

CONTROL NARRATIVE

PROJECT: SOUTH UMPQUA R. (MYRTLE CR.) BRIDGE #19C513  
 LOCATION: DOUGLAS COUNTY  
 OBEC PROJECT: 8-147F  
 SURVEY DATUM:  
 HORIZONTAL - LOCAL DATUM PLANE DERIVED FROM OREGON STATE PLANE - SOUTH ZONE, NAD 83(CORS96) EPOCH 2002 INTERNATIONAL FEET UNITS, PER COUNTY ROAD NO. 386 SURVEY NO. 00000031

VERTICAL - NAVD 88 (INTERNATIONAL FEET)

THE INITIAL GPS CONTROL NETWORK FOR THIS PROJECT WAS SET IN DECEMBER OF 2004 BY OBEC CONSULTING ENGINEERS AND RECORDED AS DOUGLAS COUNTY ROAD NO. 386 SURVEY NO. 00000031. TO CONVERT THE LDP COORDINATES TO OREGON STATE PLANE, SOUTH ZONE - NAD 83(CORS96) EPOCH 2002, MULTIPLY THE COORDINATES BY A COMBINED SCALE FACTOR OF 0.99986659.

CONTROL POINTS FOR THIS SURVEY WERE NOT SET ON AND DO NOT REPRESENT PROPERTY LINES OR RIGHT-OF-WAY LINES AND ARE INTENDED FOR USE SOLELY BY DOUGLAS COUNTY AND OBEC CONSULTING ENGINEERS IN SUPPORT OF FUTURE PROJECTS. IT IS NOT THE INTENT OF DOUGLAS COUNTY OR OBEC CONSULTING ENGINEERS TO PERPETUATE THESE CONTROL POINTS AS MONUMENTS.

| LEGEND |  |
|--------|--|
| ☆      | FOUND GPS NETWORK POINT                    |
| ▲      | SET NETWORK POINT                          |
| ☆      | DESTROYED GPS NETWORK POINT                |
| ☆-▲    | LINES OF OBSERVATION                       |
| [ ]    | RECORD PER CO. RD. 386 SURVEY NO. 00000031 |

NETWORK POINT COORDINATE TABLE FND = FOUND RPC = RED PLASTIC CAP

| PT. NO. | LDP NORTHING | LDP EASTING | DATE      | DESCRIPTION  |
|---------|--------------|-------------|-----------|--|
| 1       | 507719.86    | 4175473.39  | 8-31-2007 | FND MAGNAIL & WASHER "OBEC CONTROL", PER CO. RD. 386 SURVEY NO. 00000031                 |
| 2       | 507115.40    | 4174080.04  | 8-31-2007 | FND 1/2" IRON ROD W/ALUM. CAP "ODOT HORIZ. CONTROL 505", PER SURVEY NO. ST. HWY. 15-002C |
| 3       | 507902.47    | 4173710.73  | 8-31-2007 | FND 1/2" IRON ROD W/ALUM. CAP "ODOT HORIZ. CONTROL 500", PER SURVEY NO. ST. HWY. 15-002C |
| 7       | 508132.96    | 4175236.27  | 8-31-2007 | FND MAGNAIL & WASHER "OBEC CONTROL", PER CO. RD. 386 SURVEY NO. 00000031                 |
| 8       | 508173.70    | 4174856.55  | 8-31-2007 | FND 5/8" IRON ROD W/RPC "OBEC CONTROL", PER CO. RD. 386 SURVEY NO. 00000031              |
| 500     | 507455.66    | 4174082.16  | 8-31-2007 | SET 5/8" X 30" REBAR W/RPC "OBEC CONTROL"  |
| 501     | 507915.00    | 4174940.46  | 8-31-2007 | SET 5/8" X 30" REBAR W/RPC "OBEC CONTROL"  |
| 502     | 507962.62    | 4175174.23  | 8-31-2007 | SET MAGNAIL & WASHER "OBEC CONTROL"  |

REGISTERED PROFESSIONAL LAND SURVEYOR

OREGON JULY 12, 2005 ARON J. CUTSFORTH 65696 RENEWAL DATE: DEC. 31, 2007 SIGNED: OCTOBER 23, 2007

OBEC CONSULTING ENGINEERS  
 Corporate Office: 920 COUNTRY CLUB ROAD, SUITE 100B EUGENE, OREGON 97401-6089, 541-683-6090  
 2235 MISSION STREET SE, SUITE 100 SALEM, OREGON 97302-1295, 503-589-4100  
 1335 POPLAR DRIVE MEDFORD, OREGON 97504-5207, 541-774-5590  
 5005 SW MEADOWS ROAD, SUITE 120 LAKE OSWEGO, OREGON 97035, 503-620-6103

DOUGLAS COUNTY  
 RIGHT-OF-WAY BOUNDARY MONUMENTATION SURVEY  
 SOUTH UMPQUA R. (MYRTLE CREEK)  
 BRIDGE NO. 19C513

DOUGLAS COUNTY PUBLIC WORKS  
 1036 S.E. DOUGLAS STREET  
 ROSEBURG, OR. 97470

OCTOBER, 2007  
 SCALE = N/A  
 SHEET 2 OF 4

DESIGNED: A. CUTSFORTH PROJ. NO. 8-147F  
 DRAWN: D. JOHN CHK'D: ANDY AUSLAND

R386BR01