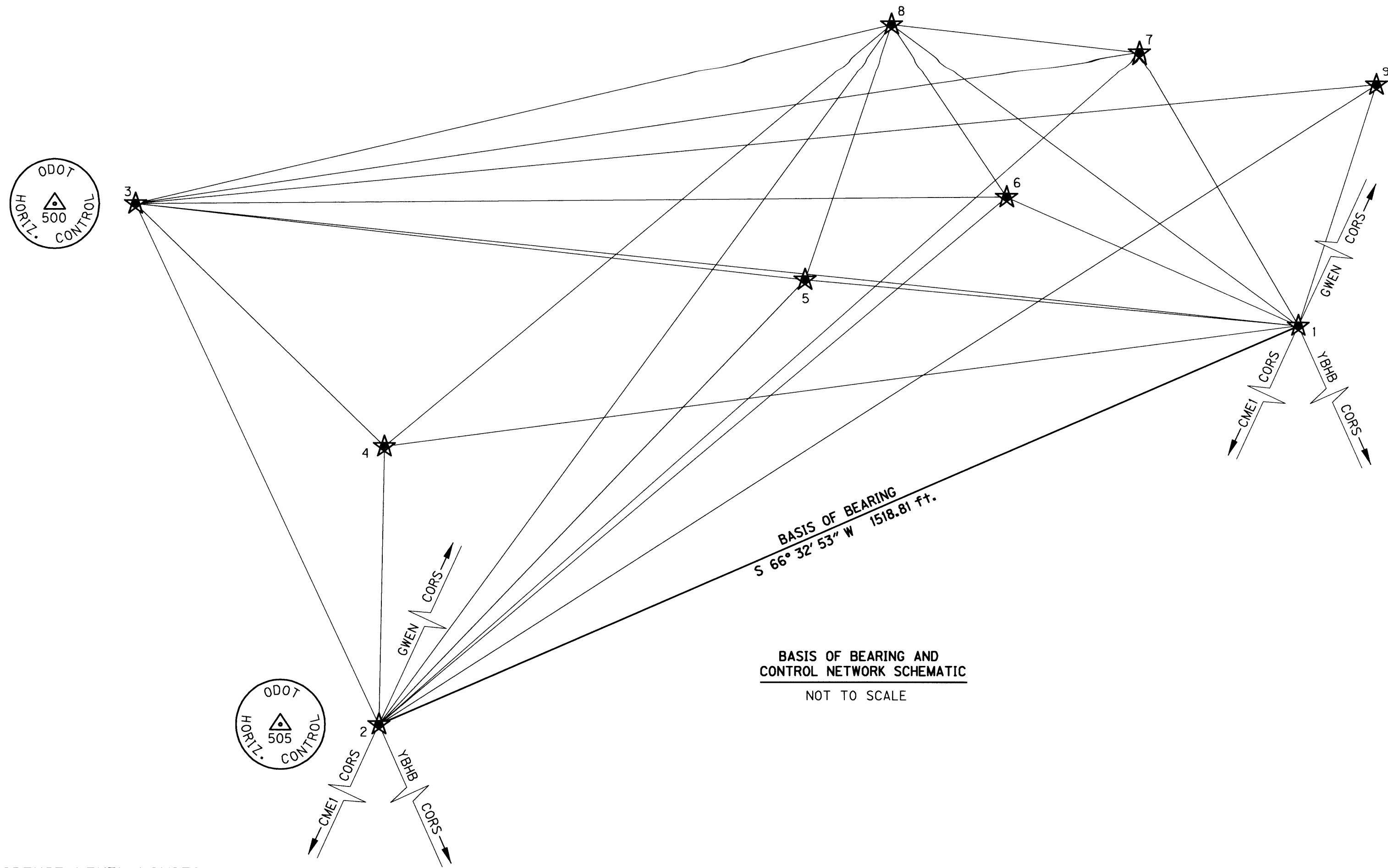


N.W. & N.E. 1/4, SEC. 28, T.29 S., R.5 W., W.M.

FILED
 Date: MAY 3, 2005 By: JP
 This survey consists of:
 Map: Co. RD. # 386
 Corner Rpt: _____
 DOUGLAS COUNTY
 SURVEYOR



BASIS OF BEARING AND CONTROL NETWORK SCHEMATIC
 NOT TO SCALE

1.96 SIGMA (95%) CONFIDENCE LEVEL LIMITS

POINT NO.	SEMI MAJOR	SEMI MINOR	ORIENTATION*
3	0.02 ifft.	0.01 ifft.	351°23'25"
4	0.03 ifft.	0.02 ifft.	181°17'58"
5	0.02 ifft.	0.01 ifft.	215°45'25"
6	0.03 ifft.	0.02 ifft.	201°58'13"
7	0.04 ifft.	0.02 ifft.	193°02'02"
8	0.02 ifft.	0.01 ifft.	349°38'36"
9	0.03 ifft.	0.02 ifft.	181°39'20"

* NORTH AZIMUTH
 FIXED POINTS NOT SUBJECT TO LEAST SQUARES
 ADJUSTMENT OR CONFIDENCE LEVEL ANALYSIS: 1, 2

CONTROL NARRATIVE

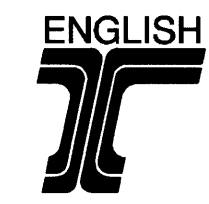
PROJECT: SOUTH UMPQUA R. (MYRTLE CR.) BRIDGE #19C513
 LOCATION: DOUGLAS COUNTY
 OBEC PROJECT: 8-147
 SURVEY DATUM: LOCAL DATUM PLANE (LDP)
 HORIZONTAL - LDP DERIVED FROM OREGON STATE PLANE - SOUTH ZONE,
 NAD 83(CORS 96) EPOCH 2002 INTERNATIONAL FEET UNITS

LEGEND	
★	SET GPS NETWORK POINT
★★	LINE OF OBSERVATION

NETWORK POINT COORDINATE TABLE

RPC = RED PLASTIC CAP
 CS = COUNTY SURVEY

PT. NO.	LDP NORTHING	LDP EASTING	DATE	DESCRIPTION
1	507719.86	4175473.39	12-06-2004	SET MAGNAIL & WASHER "OBEC CONTROL"
2	507115.40	4174080.04	12-06-2004	FND 1/2" IRON ROD W/ALUM. CAP "ODOT HORIZ. CONTROL 505"
3	507902.47	4173710.73	12-06-2004	FND 1/2" IRON ROD W/ALUM. CAP "ODOT HORIZ. CONTROL 500"
4	507535.61	4174088.14	12-06-2004	SET MAGNAIL & WASHER "OBEC CONTROL"
5	507788.61	4174725.52	12-06-2004	SET 5/8" IRON ROD W/RPC "OBEC CONTROL"
6	507914.07	4175031.08	12-06-2004	SET 5/8" IRON ROD W/RPC "OBEC CONTROL"
7	508132.96	4175236.27	12-06-2004	SET MAGNAIL & WASHER "OBEC CONTROL"
8	508173.70	4174856.55	12-06-2004	SET 5/8" IRON ROD W/RPC "OBEC CONTROL"
9	508084.93	4175591.19	12-06-2004	SET MAGNAIL & WASHER "OBEC CONTROL"



REGISTERED PROFESSIONAL LAND SURVEYOR

Bret N. Elithorp
 OREGON
 JAN. 14, 2005
 BRET N. ELITHORP
 63148

RENEWAL DATE: DEC. 31, 2005
 SIGNED: 3/30/05

RANDY FITCH
 APPROVED BY: GROUP MANAGER TITLE

OBEC CONSULTING ENGINEERS
 1335 POPLAR DRIVE
 MEDFORD, OREGON 97504
 TEL. (541) 774-5590 FAX. (541) 774-5591

HORIZONTAL CONTROL, RECOVERY AND RETRACEMENT MAP
SOUTH UMPQUA R. (MYRTLE CR.) BRIDGE #19C513
 FOR DOUGLAS COUNTY
 FEBRUARY 2005

DOUGLAS COUNTY, OREGON NO SCALE

DESIGNED: B. ELITHORP PROJ. NO. 8-147 SHT. 2 OF 4
 DRAWN: R. ODEAR CHK'D: RANDY FITCH FILE NO. 143855

0000031