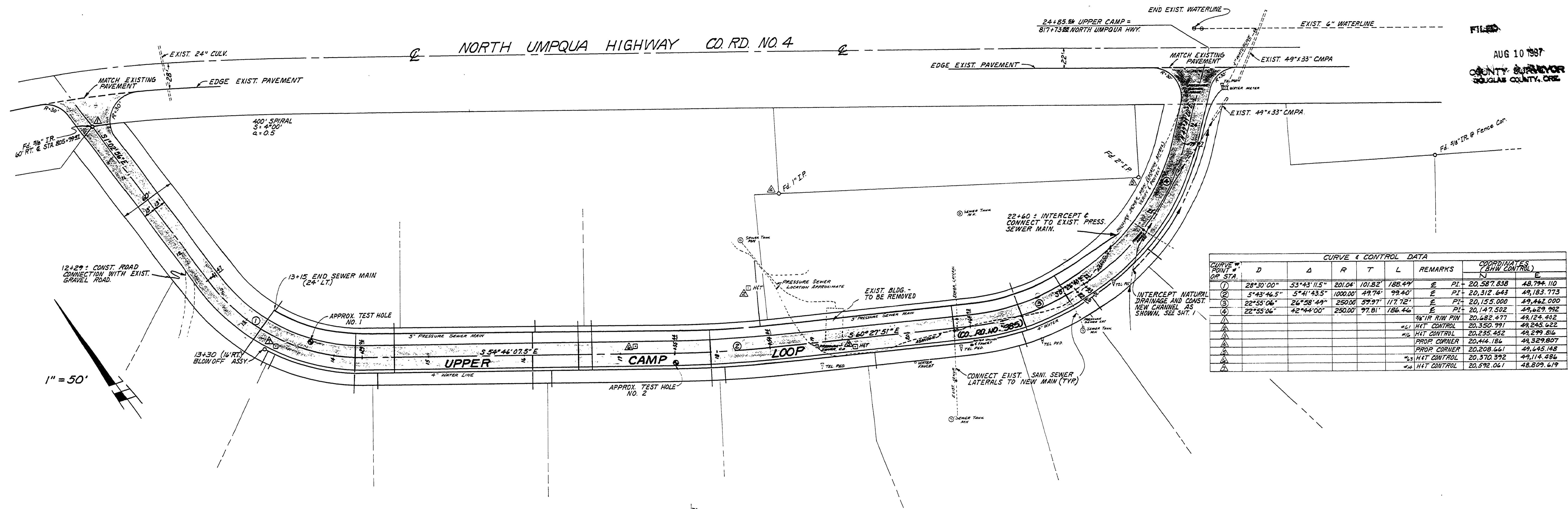
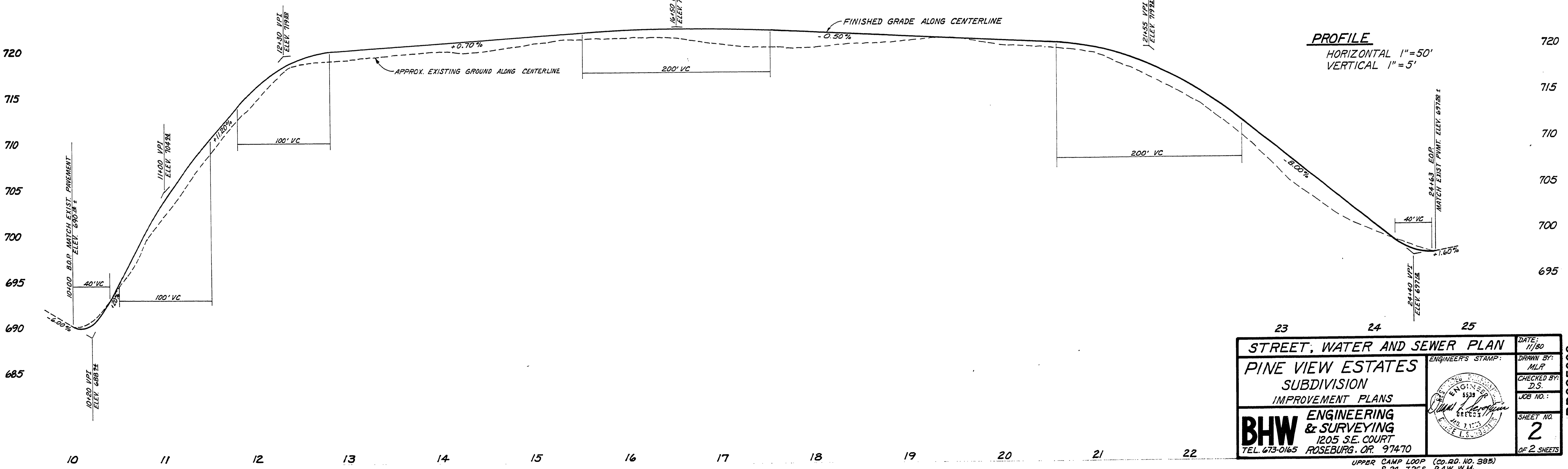


FILED
AUG 10 1987
COUNTY SURVEYOR
DOUGLAS COUNTY, ORE



CURVE & CONTROL DATA

CURVE POINT # OR STA.	D	Δ	R	T	L	REMARKS	COORDINATES (BHW CONTROL)	
							N	E
1	28°30'00"	53°43'11.5"	201.04	101.82	186.49	E PI	20,587.838	48,794.110
2	5°43'46.5"	5°41'43.5"	1000.00	49.74	99.40	E PI	20,312.643	49,183.773
3	22°55'06"	26°58'49"	250.00	59.97	117.72	E PI	20,155.000	49,462.000
4	22°55'06"	42°44'00"	250.00	97.81	186.46	E PI	20,147.502	49,629.992
5						96° TR R/W PIN	20,482.477	49,124.402
6						H/T CONTROL	20,350.991	49,245.622
7						H/T CONTROL	20,235.492	49,299.816
8						PROP CORNER	20,444.184	49,329.807
9						PROP CORNER	20,208.661	49,445.148
10						H/T CONTROL	20,370.392	49,114.486
11						H/T CONTROL	20,592.061	48,809.619



STREET, WATER AND SEWER PLAN

PINE VIEW ESTATES
SUBDIVISION
IMPROVEMENT PLANS

ENGINEER'S STAMP:
BHW ENGINEERING & SURVEYING
1205 S.E. COURT
ROSEBURG, OR 97470
TEL. 673-0165

DATE: 7/1/80
DRAWN BY: MLR
CHECKED BY: D.S.
JOB NO.:
SHEET NO. 2 OF 2 SHEETS

UPPER CAMP LOOP (CO. RD. NO. 385)
S. 24, T. 26 S., R. 1 W., W.M.

385 # 1780

RD385002

11/85