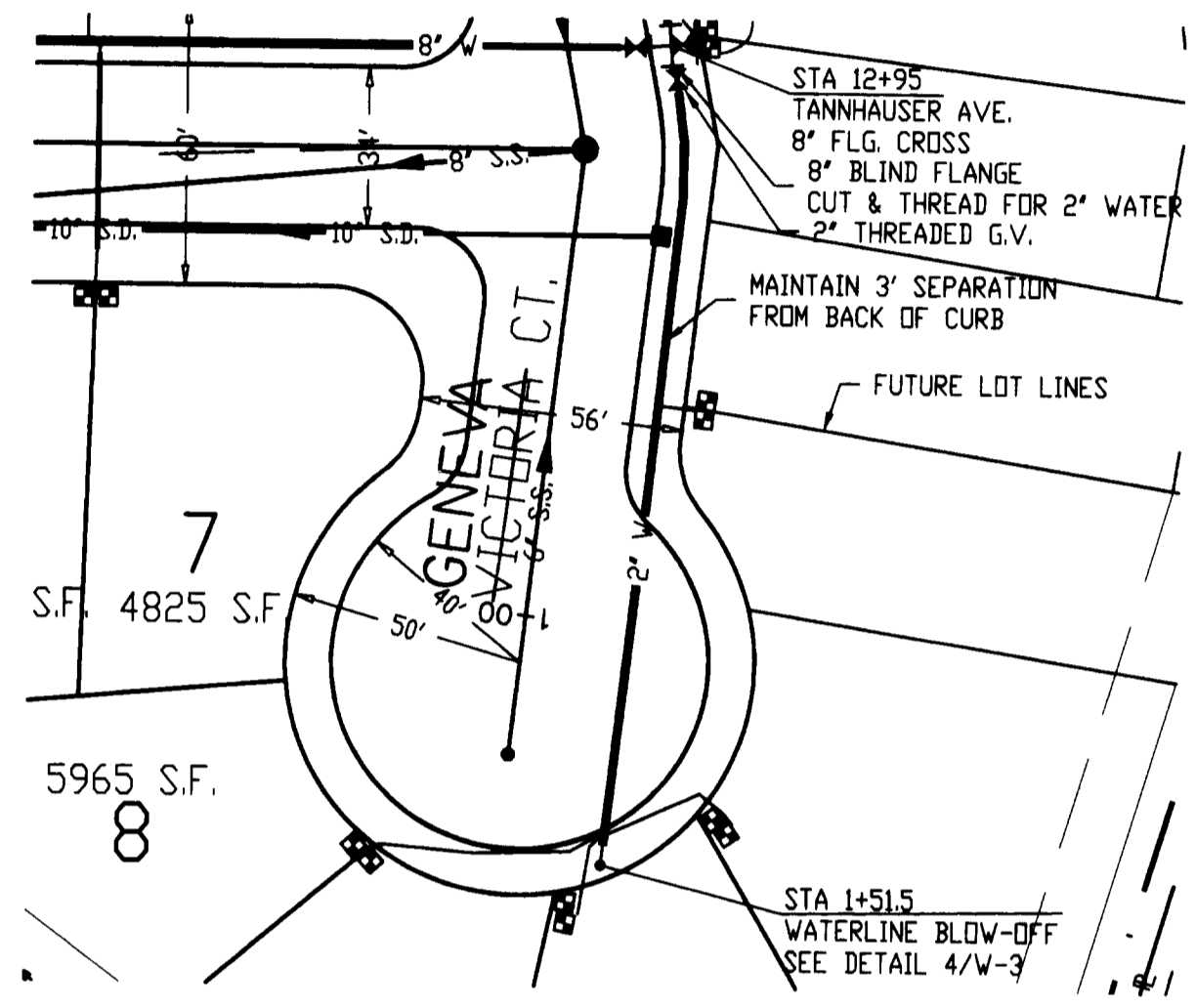




SCALE: 1" = 40'

GENEVA VICTORIA CT. WATERLINE



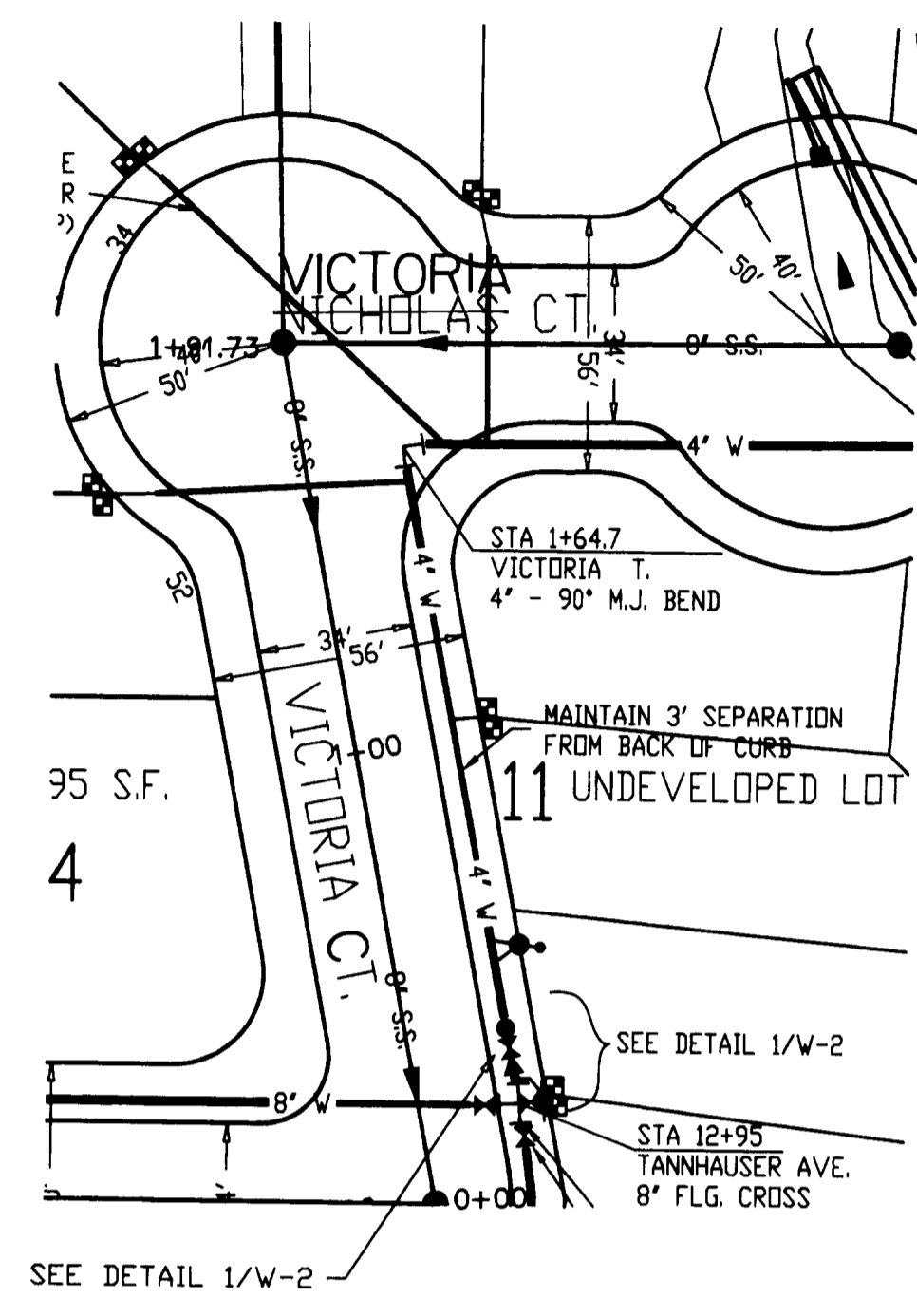
SCALE: 1" = 40' HOR
1" = 5' VER

NOTE: STATIONING IS BASED ON THE VICTORIA CT. CENTERLINE
MINIMUM COVER OVER NEW WATERLINES SHALL BE 36".



SCALE: 1" = 40'

VICTORIA ST. WATERLINE



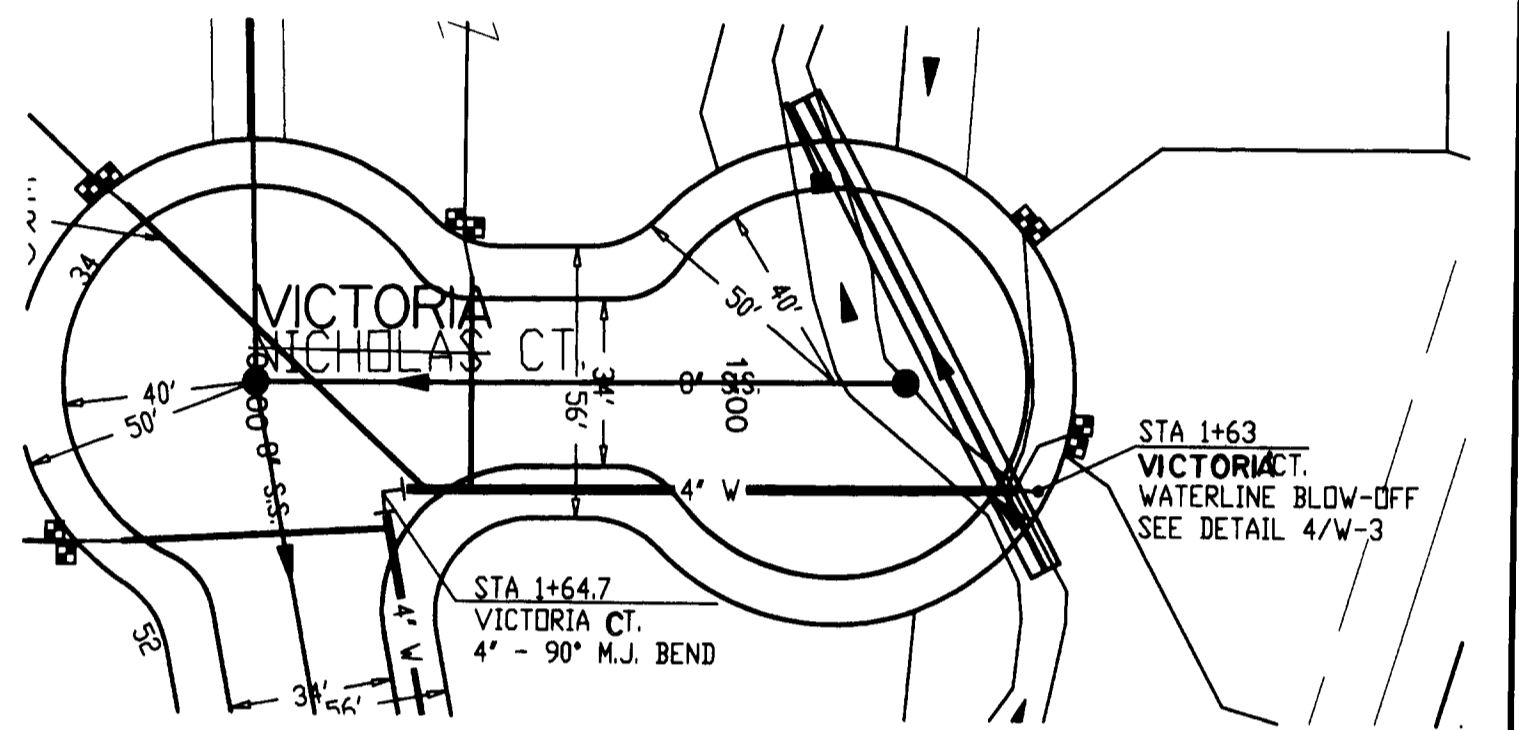
SCALE: 1" = 40' HOR
1" = 5' VER

NOTE: STATIONING IS BASED ON THE VICTORIA CT. CENTERLINE
MINIMUM COVER OVER NEW WATERLINES SHALL BE 36".



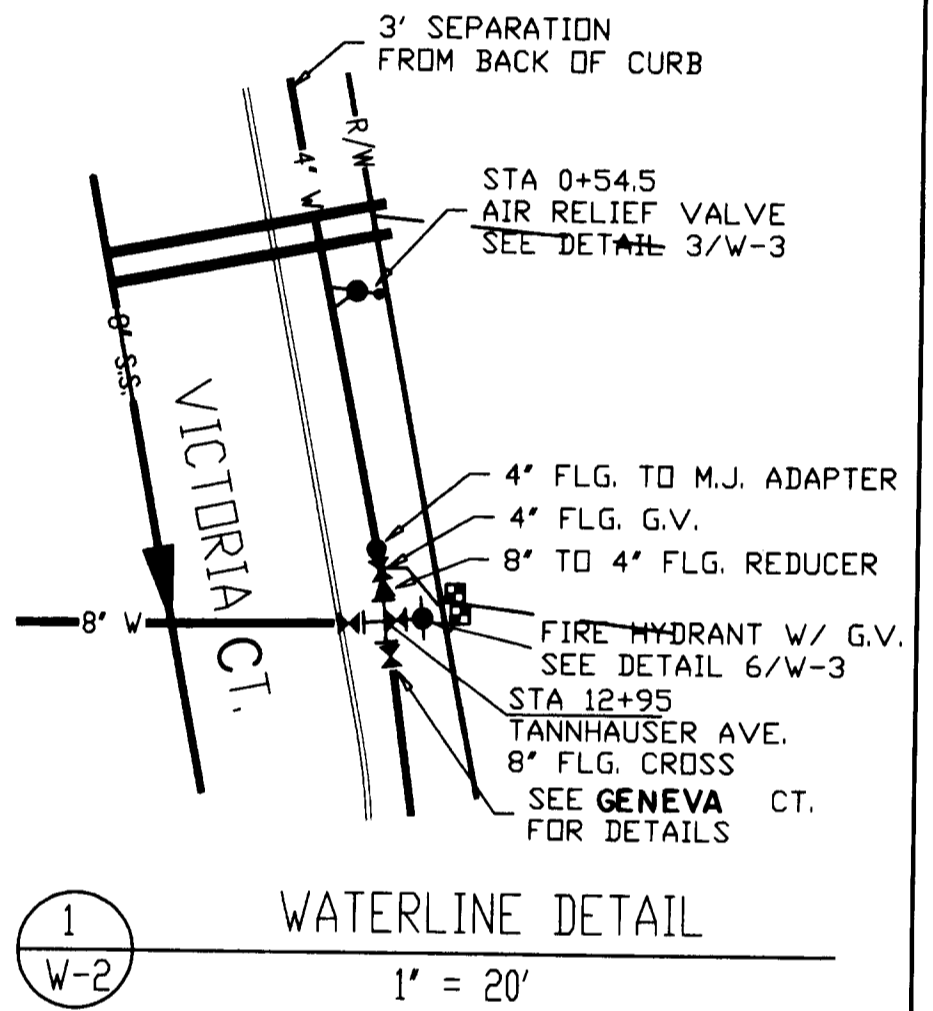
SCALE: 1" = 40'

VICTORIA NICHOLAS CT. WATERLINE

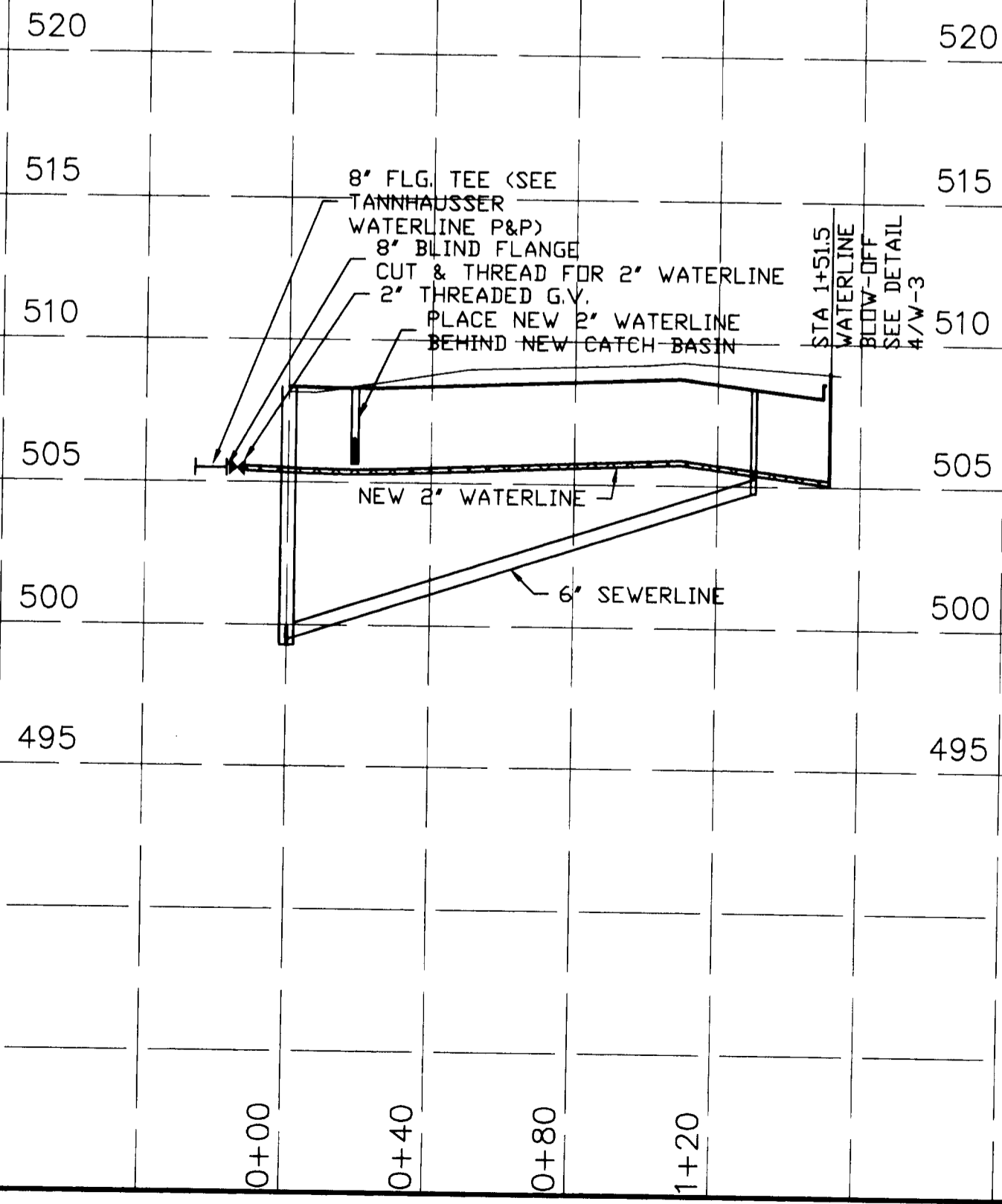


SCALE: 1" = 40' HOR
1" = 5' VER

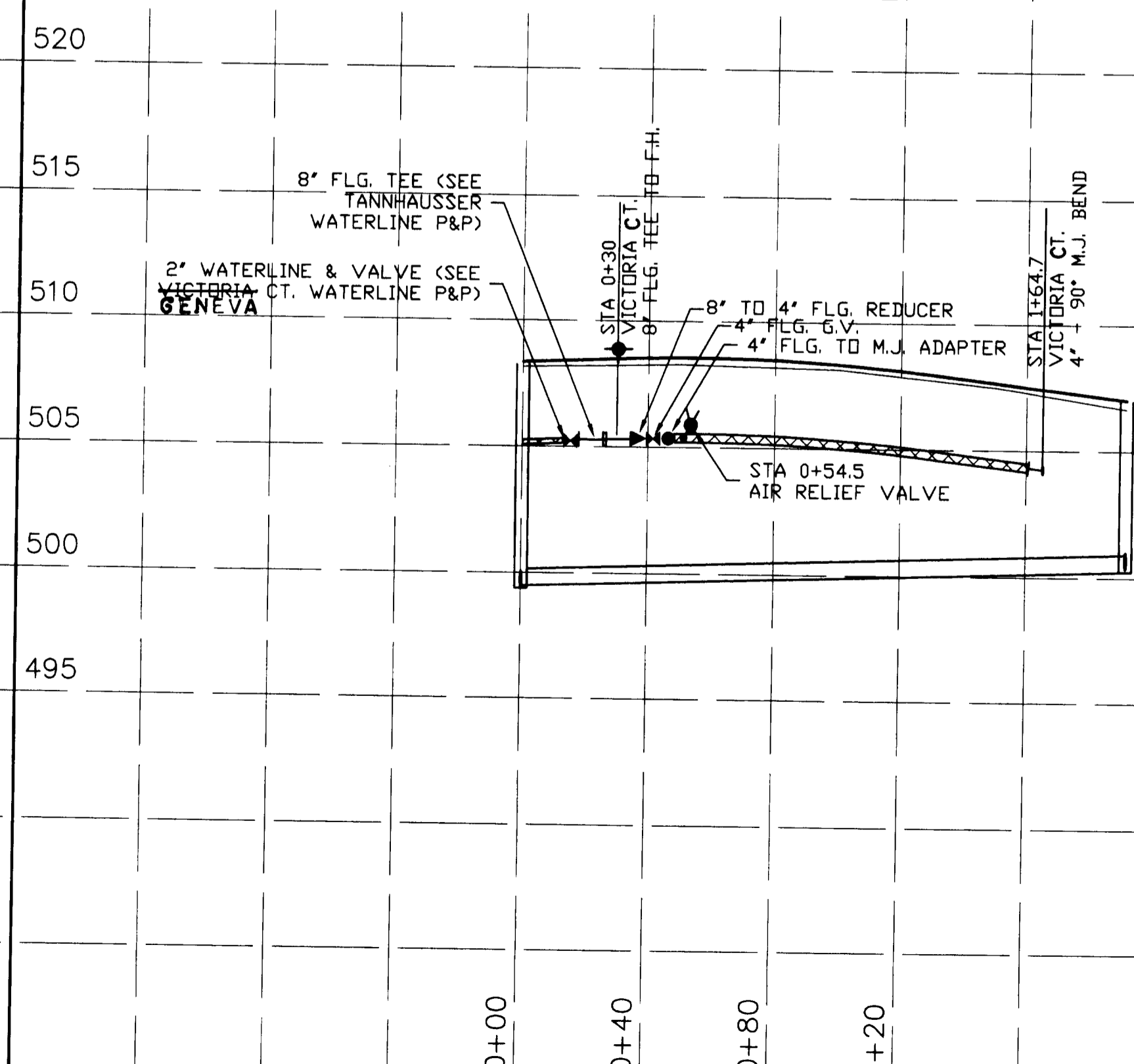
NOTE: STATIONING IS BASED ON THE NICHOLAS CT. CENTERLINE
MINIMUM COVER OVER NEW WATERLINES SHALL BE 36".



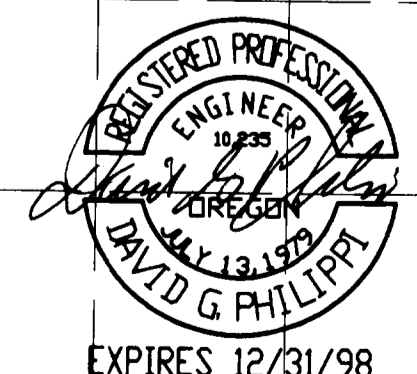
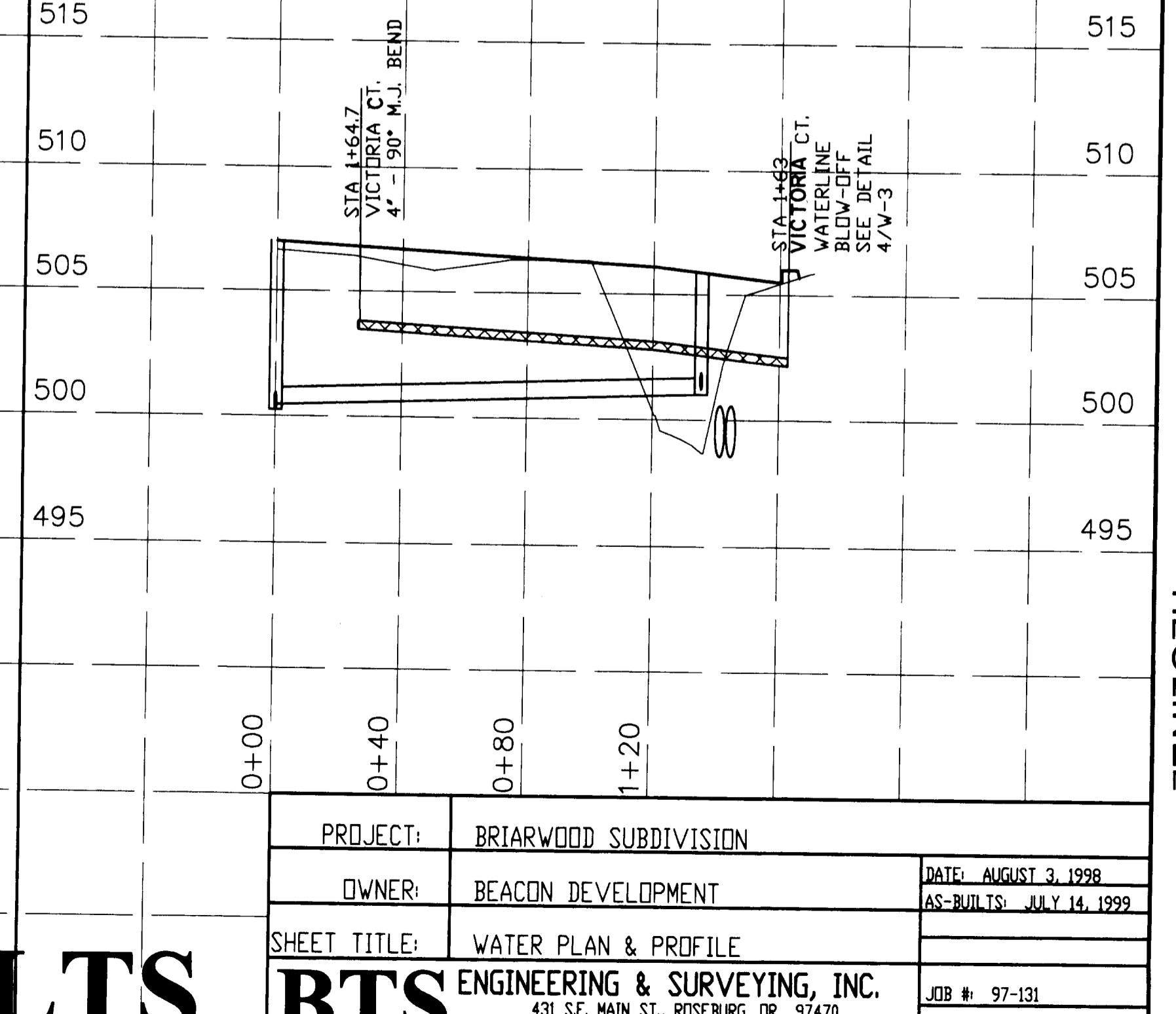
GENEVA VICTORIA CT. WATERLINE



VICTORIA CT. WATERLINE



VICTORIA NICHOLAS CT. WATERLINE



AS-BUILTS

PROJECT:	BRIARWOOD SUBDIVISION	DATE:	AUGUST 3, 1998
OWNER:	BEACON DEVELOPMENT	AS-BUILTS:	JULY 14, 1999
SHEET TITLE:	WATER PLAN & PROFILE	JOB #:	97-131
BTS ENGINEERING & SURVEYING, INC. 431 S.E. MAIN ST., ROSEBURG, OR 97470 PHONE (541) 673-0966 FAX (541) 673-0105		SHEET W2 OF 3	

CO. RD. # 381D, 381E

SHEET 12 OF 13

H20LINE2