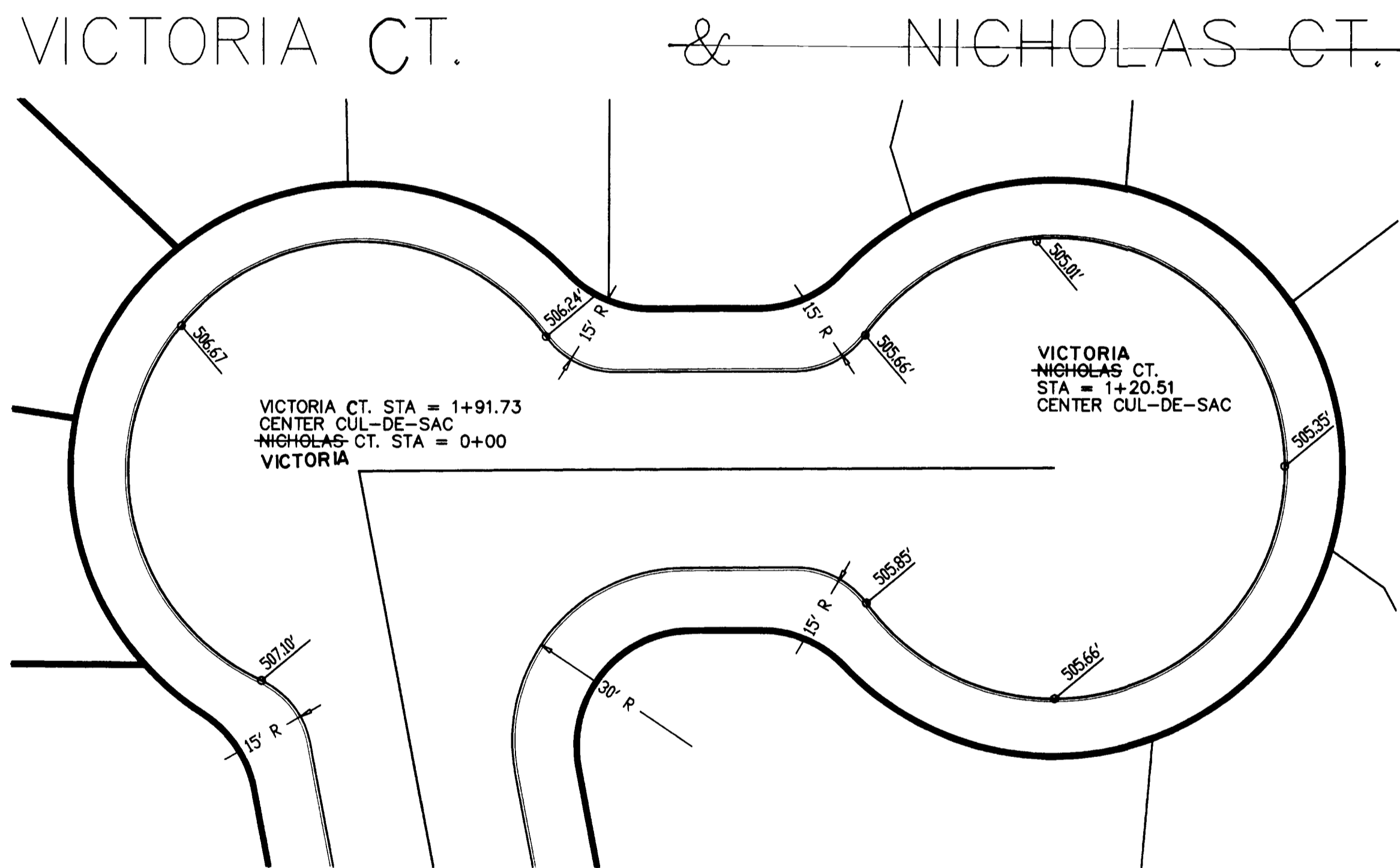
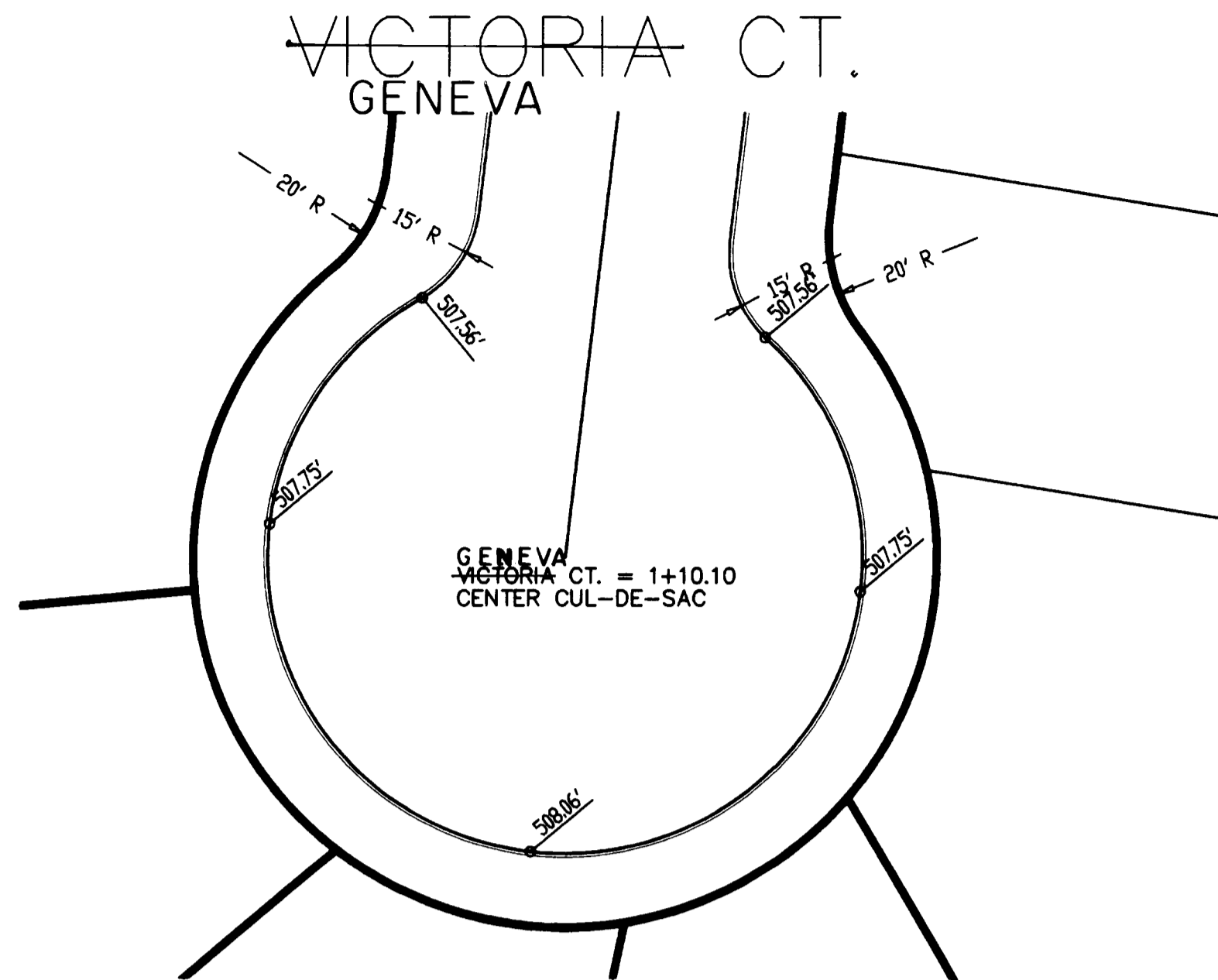
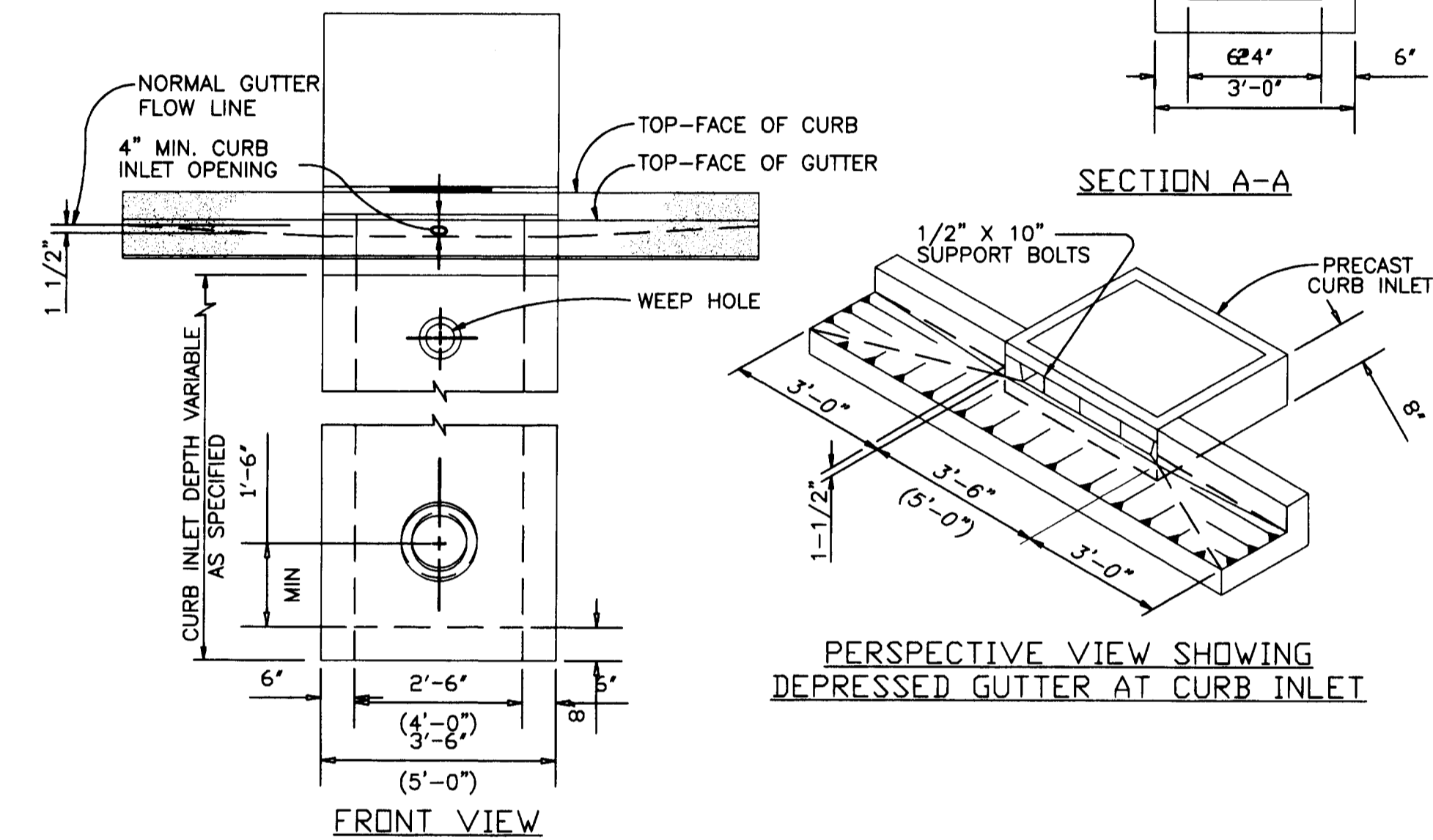
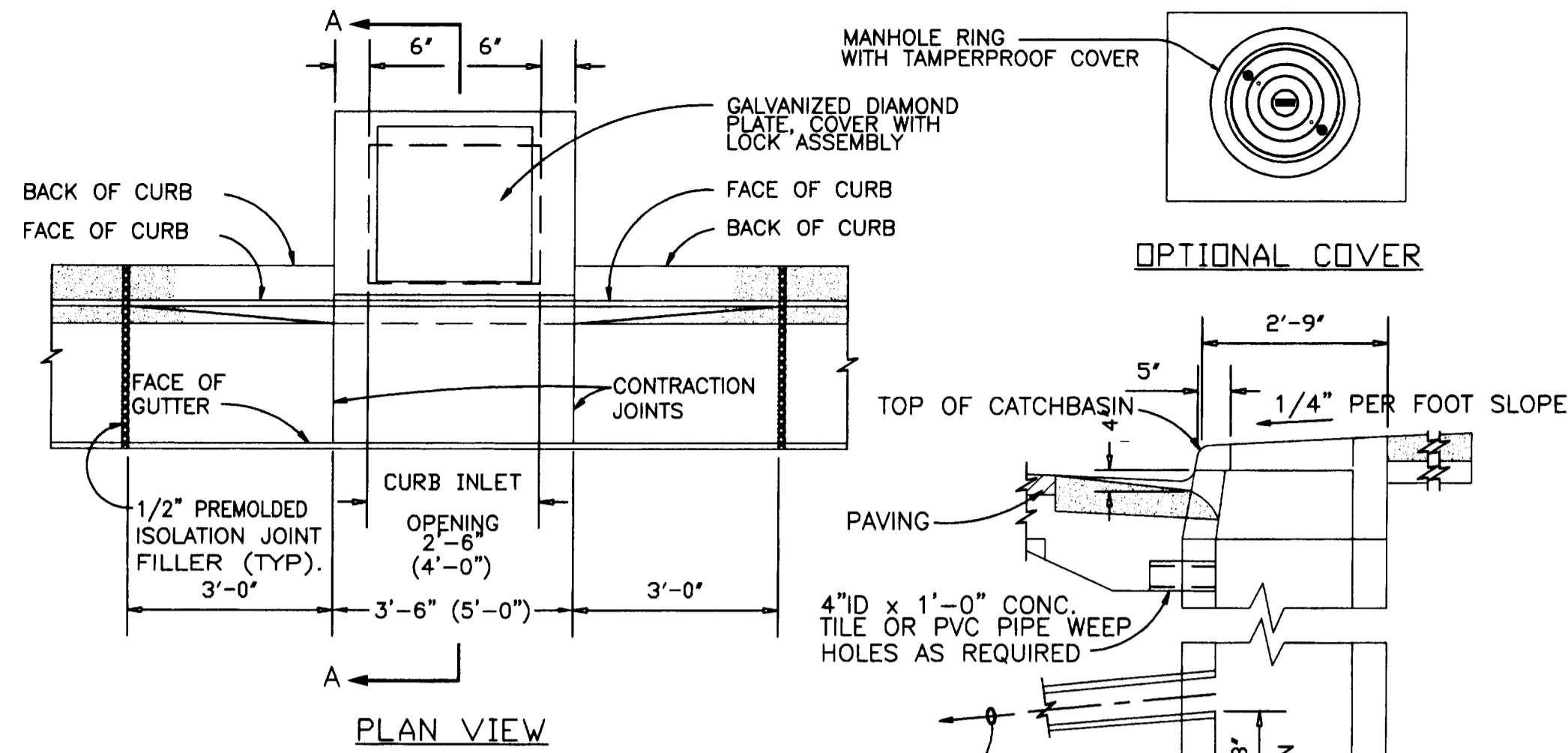


SCALE: 1" = 20'

NOTE: SPOT ELEVATIONS ARE AT THE BOTTOM OF CURB



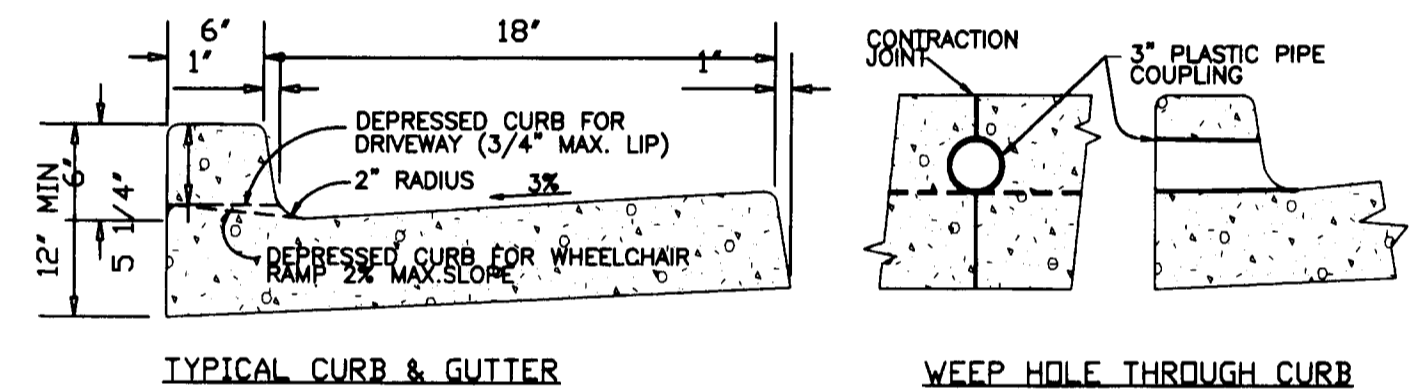
3 CUL-DE-SAC SPOT ELEVATIONS
NT.S.



NOTES:

1. CURB INLET TOP AND BASE SHALL MEET H20 LOADING
2. CONCRETE STRENGTH SHALL BE 3000 PSI.
3. ALL FABRICATED METAL PARTS SHALL BE HOT-DIPPED GALVANIZED AFTER FABRICATION.
4. CURB INLET BASE MAY BE PRECAST OR CAST-IN-PLACE.
5. DIMENSIONS SHOWN ABOVE IN PARENTHESES ARE FOR 4A INLETS.
6. A 1 1/2\" A INLET SHALL HAVE A CURB INLET OPENING WIDTH OF 1'6\" AND AN OUTSIDE WIDTH OF 2'6\"; ALL OTHER DIMENSIONS AND DETAILS SHALL BE AS SHOWN.

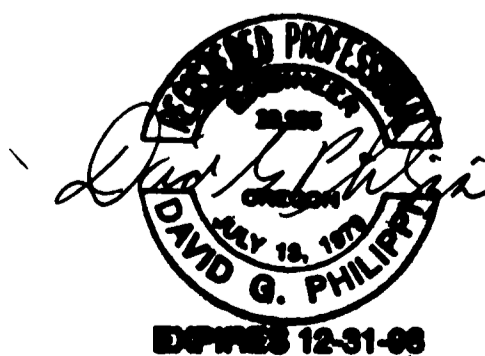
1 STORM DRAIN BASIN DETAIL
NT.S.



NOTES:

1. ALL RADII SHALL BE 3/4\" EXCEPT AS OTHERWISE SHOWN.
2. ISOLATION JOINTS SHALL BE PLACED ONLY AS SPECIFIED.
3. CONTRACTION JOINTS SHALL BE PLACED AT 15' INTERVALS AND SHALL EXTEND AT LEAST 50% THROUGH THE CURB OR CURB AND GUTTER.
4. A CONTRACTION JOINT SHALL BE PLACED ALONG AND OVER WEEP HOLE THROUGH THE CURB AND THROUGH THE SIDEWALK.
5. WHEN SIDEWALKS ARE CONSTRUCTED, EXTEND 3\" PIPE TO BACK OF SIDEWALK AND INSTALL COUPLING.

2 TYPICAL CURB DETAIL
NT.S.



PROJECT:	BRIARWOOD SUBDIVISION	DATE:	AUGUST 25, 1998
OWNER:	BEACON DEVELOPMENT	REV. 1:	
SHEET TITLE:	STREET DETAILS	REV. 2:	
BTS ENGINEERING & SURVEYING, INC. 431 S.E. MAIN ST., ROSEBURG, OR 97470 PHONE (541) 673-0966 FAX (541) 673-0105	JOB #:	97-131	
	SHEET	ST2	OF 5

CO. RD. # 381D, 381E

SHEET 2 OF 13

381D CURB