

STREETS AND STORM SEWER

1. THE SITE SHALL BE ROUGH GRADED TO THE APPROVAL OF THE ENGINEER AND OWNER. EXCAVATED SOILS SHALL BE PLACED IN LIFTS OF 6" OR LESS. FILL SLOPES SHALL BE 1:1 OR LESS.
2. ALL FILL TO BE CONSTRUCTED ON SHALL BE COMPACTED TO 95% OF MAXIMUM DENSITY AT OPTIMUM MOISTURE CONTENT AS DETERMINED BY ASTM D 1557, METHOD A. ALL COMPACTON REQUIREMENTS AND TESTS SHALL BE AT THE CONTRACTOR'S EXPENSE. REFER TO SECTION 203.41 FOR CONNECTION. THE CONTRACTOR SHALL BE RESPONSIBLE FOR MAINTAINING MOISTURE CONTENT THROUGHOUT CONSTRUCTION.
3. INSPECT INSPECTIONS:
  1. DOUGLAS COUNTY DEPARTMENT OF PUBLIC WORKS SHALL BE ADVISED:
    1. IMMEDIATELY PRIOR TO CONSTRUCTION.
    2. ANYTIME CONSTRUCTION IS STOPPED, THEN RESUMED.
    3. AT COMPLETION OF CLEARING AND GRADING.
    4. AT COMPLETION OF DRAINAGE AND SEWERS.
    5. IMMEDIATELY PRIOR TO LAYING BASE ROCK.
    6. IMMEDIATELY PRIOR TO LAYING ASPHALT OR CURBS.
    7. AFTER PAVING IS COMPLETED.
  2. NOTIFY ROBERTS CREEK WATER DISTRICT, GREEN SANITARY DISTRICT, PP & L PACIFIC N. W. BELL, AND BETTEL VIEW CABLE TV, 48 HOURS PRIOR TO INSTALLATION OF RESPECTIVE UTILITY. THE CONTRACTOR SHALL COMPLY WITH EACH UTILITY COMPANY'S INSTALLATION AND TESTING PROCEDURES.

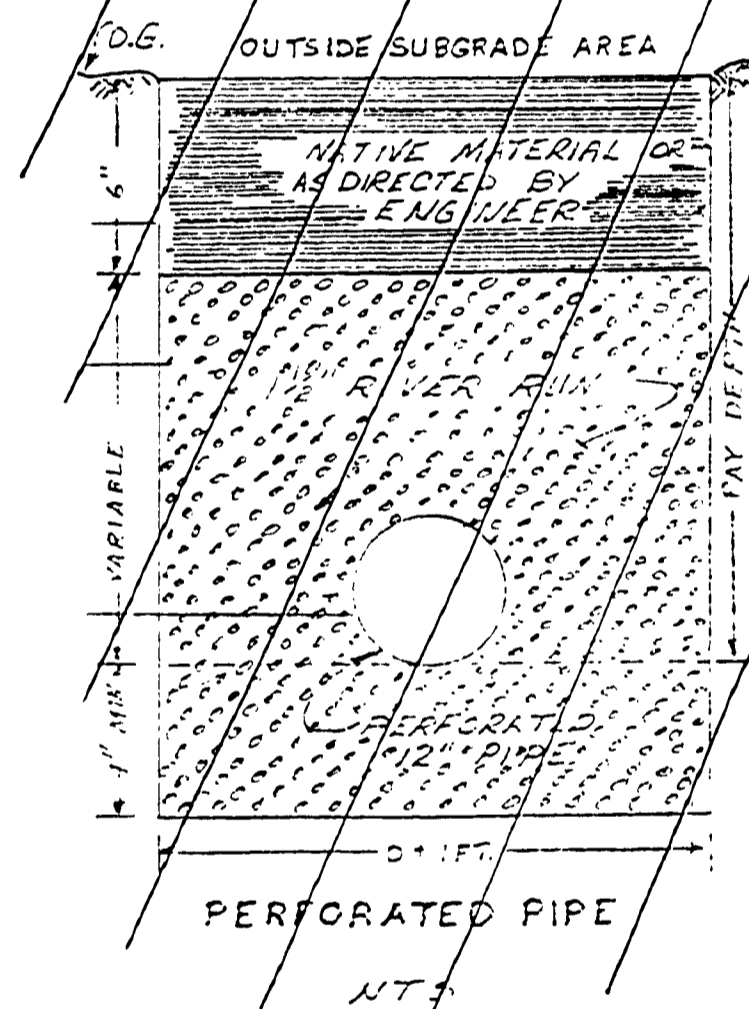
- NOTES:
1. Concrete thrust blocking to be poured against undisturbed earth.
  2. Key concrete clear of joint and accessories.
  3. The required thrust bearing areas for special connections are shown enclosed on the plans; e.g. (1) indicates 1/2 square foot bearing area required.
  4. If not shown on plans, bearing areas to conform to test pressure(s) and allowable soil bearing stress(es) shown in the special specifications. Bearing areas and special blocking details shown on plans take precedence over bearing areas and blocking details shown on this standard detail.

BASE AREA OF THURST BLOCKS IN SQ. FT.

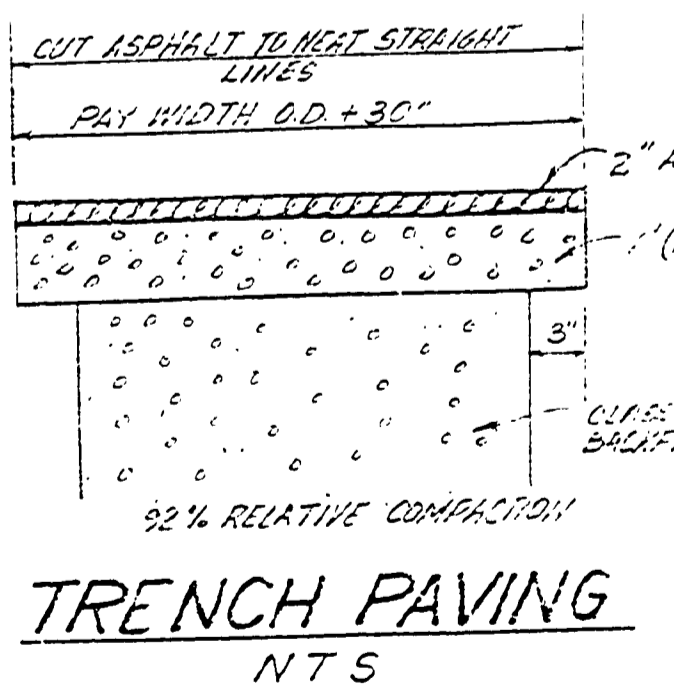
Fitting Size	Tee, Plug or Cap	Tee, Plug or Cap	Tee, Plug or Cap	Tee, Plug or Cap	Tee, Plug or Cap	Tee, Plug or Cap	Tee, Plug or Cap
4"	1.0	1.0	1.0	1.0	1.0	1.0	1.0
6"	2.0	2.0	2.0	2.0	2.0	2.0	2.0
8"	3.0	3.0	3.0	3.0	3.0	3.0	3.0
10"	4.0	4.0	4.0	4.0	4.0	4.0	4.0
12"	5.0	5.0	5.0	5.0	5.0	5.0	5.0
14"	6.0	6.0	6.0	6.0	6.0	6.0	6.0
16"	7.0	7.0	7.0	7.0	7.0	7.0	7.0
18"	8.0	8.0	8.0	8.0	8.0	8.0	8.0
20"	9.0	9.0	9.0	9.0	9.0	9.0	9.0
24"	12.0	12.0	12.0	12.0	12.0	12.0	12.0
30"	18.0	18.0	18.0	18.0	18.0	18.0	18.0

NOTE: Above test pressure based on test pressure of 150 p.s.i. per an allowable soil bearing stress of 2.0 p.s.f. (based on 100 p.s.f. soil bearing stress) for all different test pressures and allowable soil stresses, use the following table to determine test pressure (Test Pressure = 150 p.s.i. x allowable soil bearing stress / 100 p.s.f.).

STANDARD TRENCH BLOCKING DETAILS



PERFORATED PIPE



TRENCH PAVING

"RECORD DRAWINGS" SHALL BE PROVIDED TO GREEN SANITARY DISTRICT, DOUGLAS COUNTY DEPARTMENT OF PUBLIC WORKS, AND ROBERTS CREEK WATER DISTRICT. THE CONTRACTOR SHALL AT HIS EXPENSE, BE RESPONSIBLE FOR PROVIDING "RECORD DRAWINGS" INFORMATION TO THE ENGINEER. THE ENGINEER SHALL COMPLETE THE FINAL RECORD DRAWINGS AT THE OWNER'S EXPENSE.

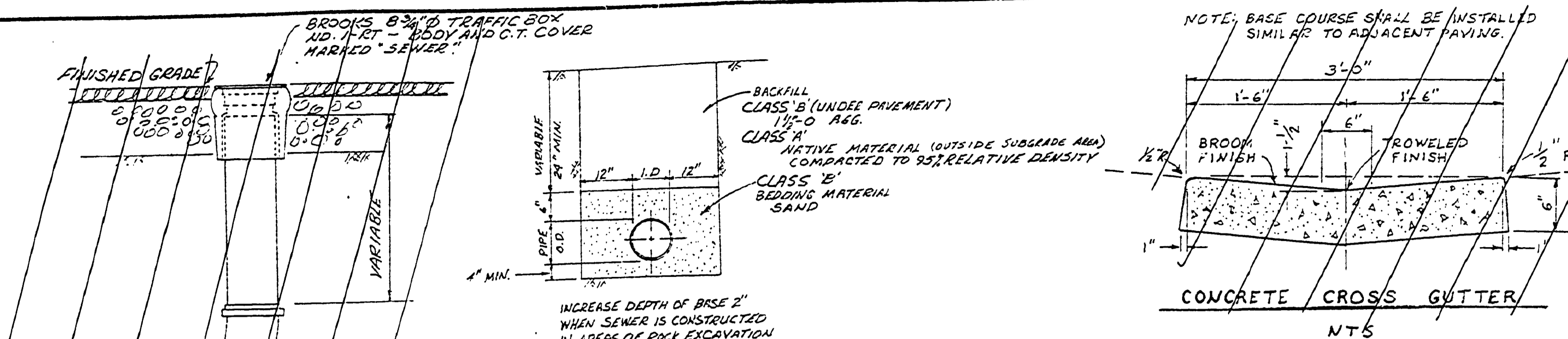
CATCH BASIN FRAME & GRATE (NTS)

FILED  
Date: 2-10-97 By: JP  
This survey consists of:  
Map:  
Narrative:  
Corner Rpt:  
DOUGLAS COUNTY SURVEYOR

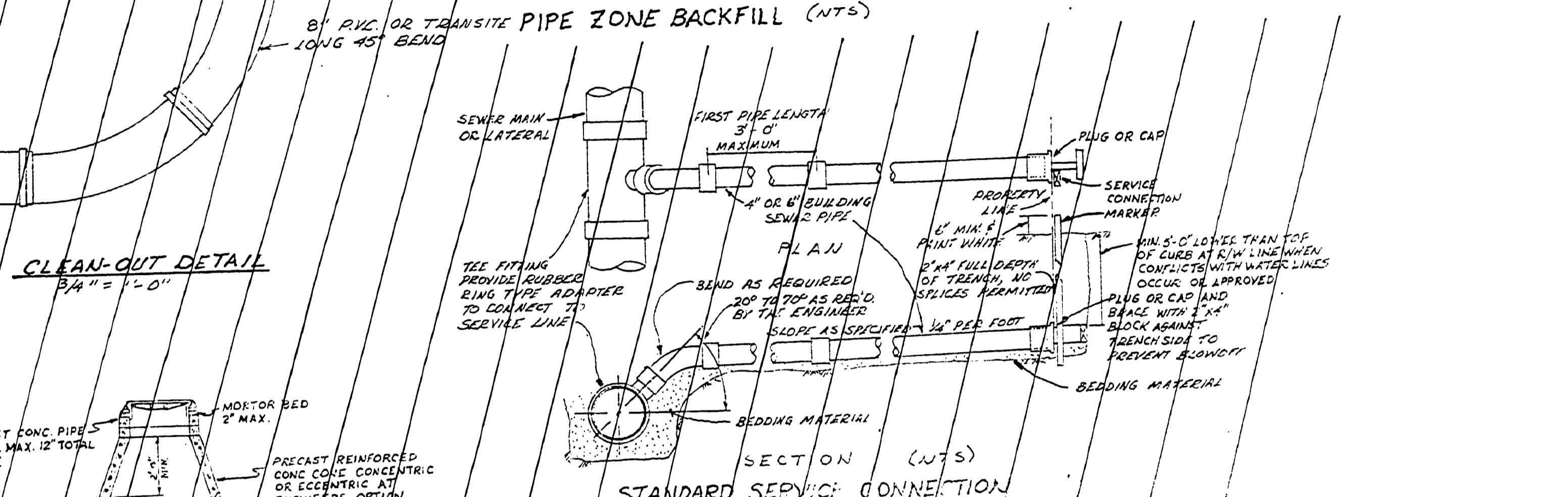
HOWARD BURDETTE  
SANTA MARIA ESTATES  
PHASE II  
MISCELLANEOUS DETAILS

ALPHA AND OMEGA ENGINEERS

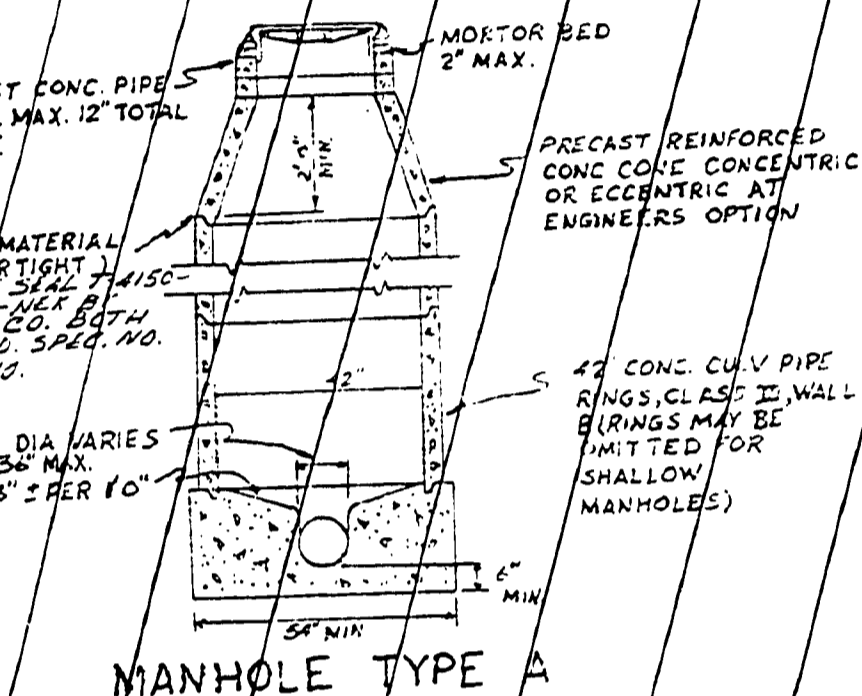
SHEET OF 3  
3  
PROJ # 16-0500  
DATE JULY, 1980  
SCALE: N/A  
HORIZ. VERT.  
NO. DATE REVISED BY  
DES. ROK. JPB. CHK. APP. MKR. DWG. NO. 16-5



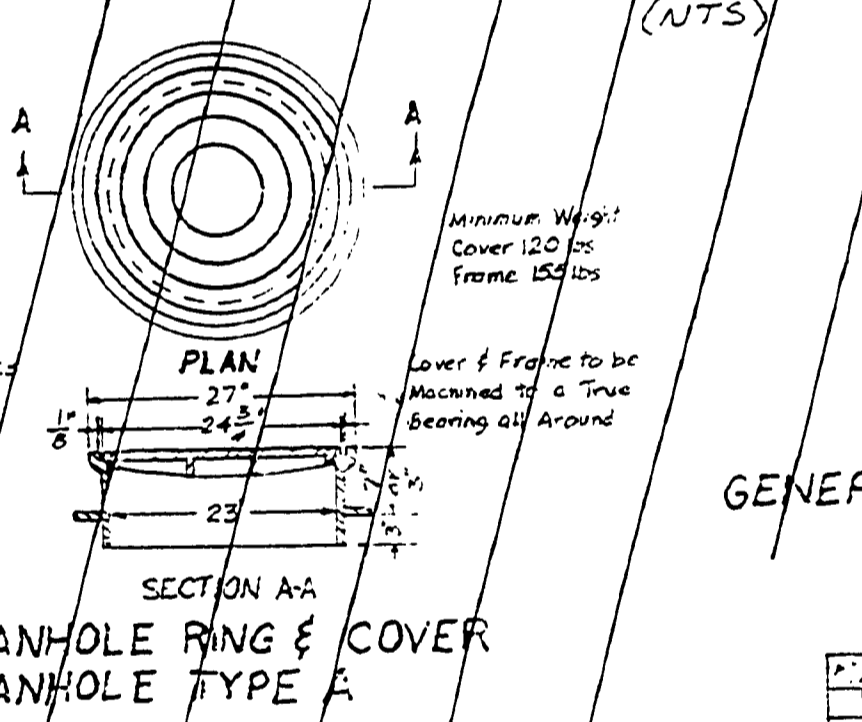
CONCRETE CROSS GUTTER



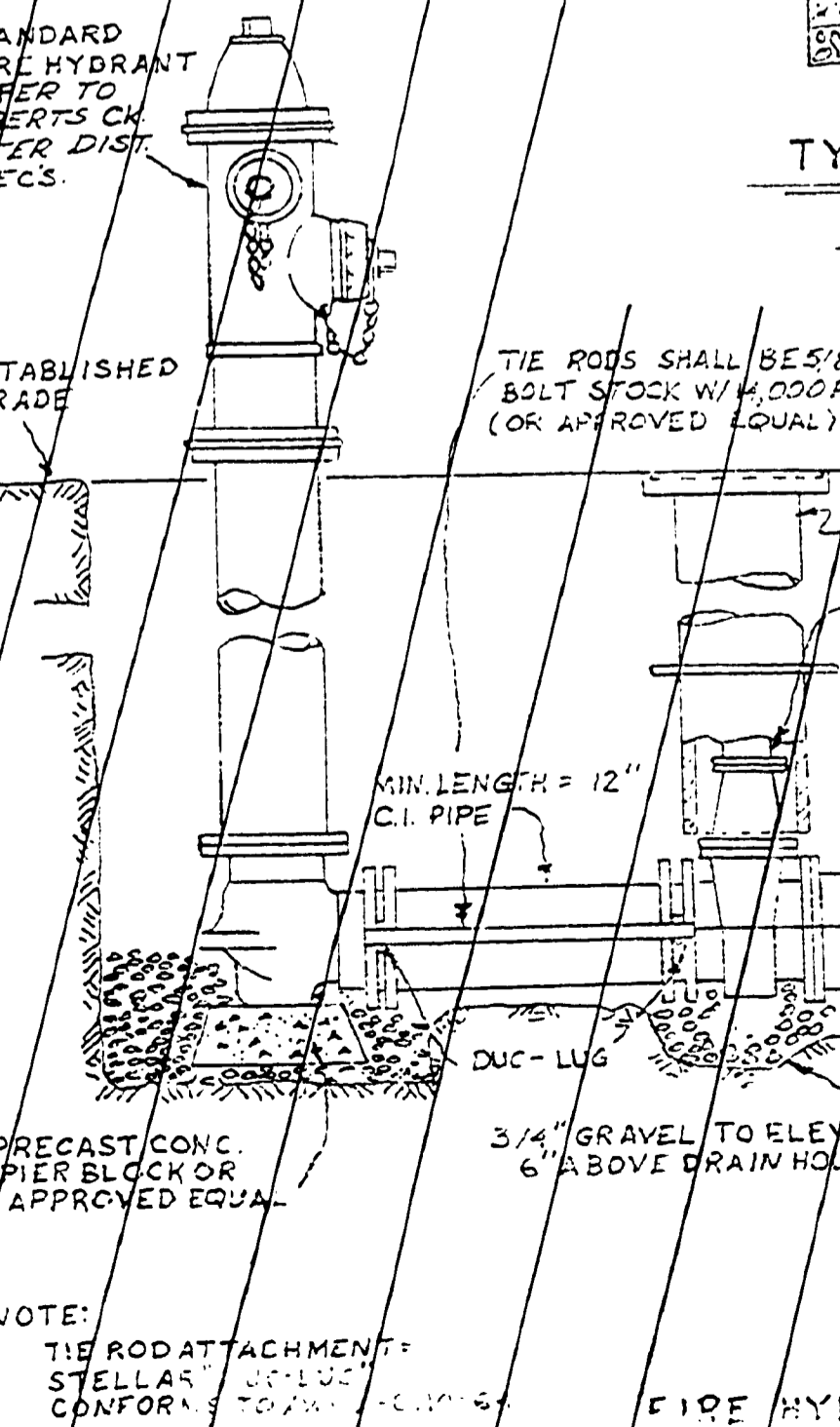
STANDARD SERVICE CONNECTION



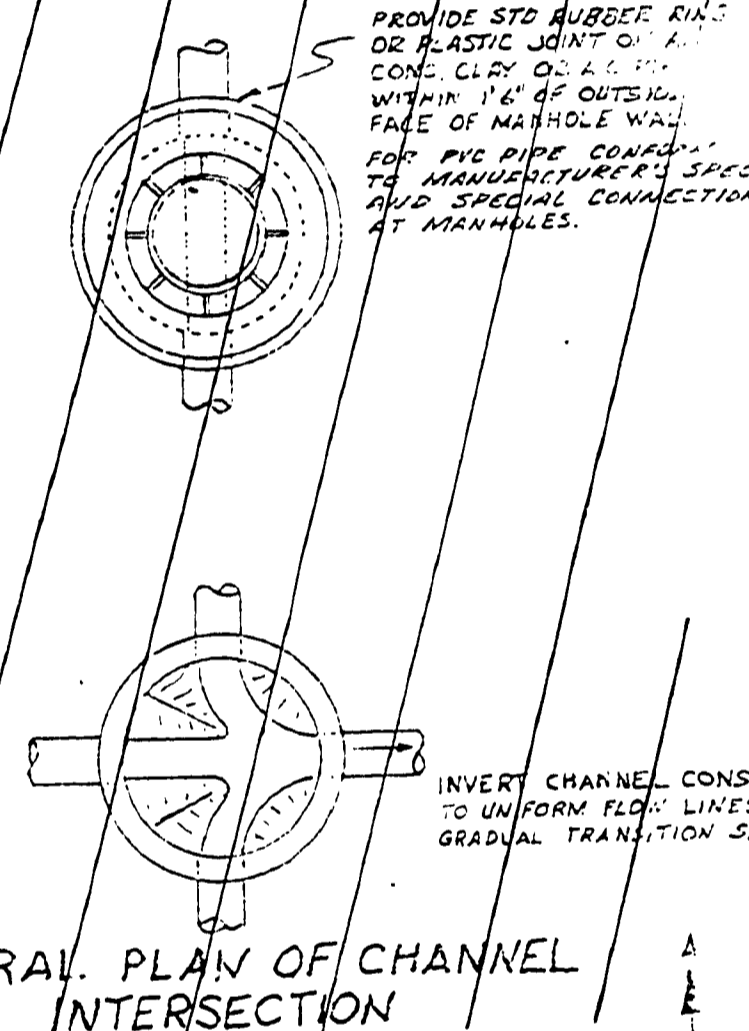
MANHOLE TYPE A



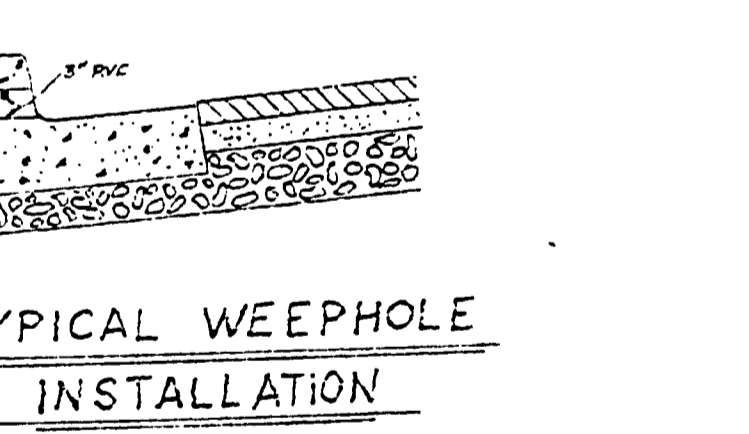
MANHOLE RING & COVER



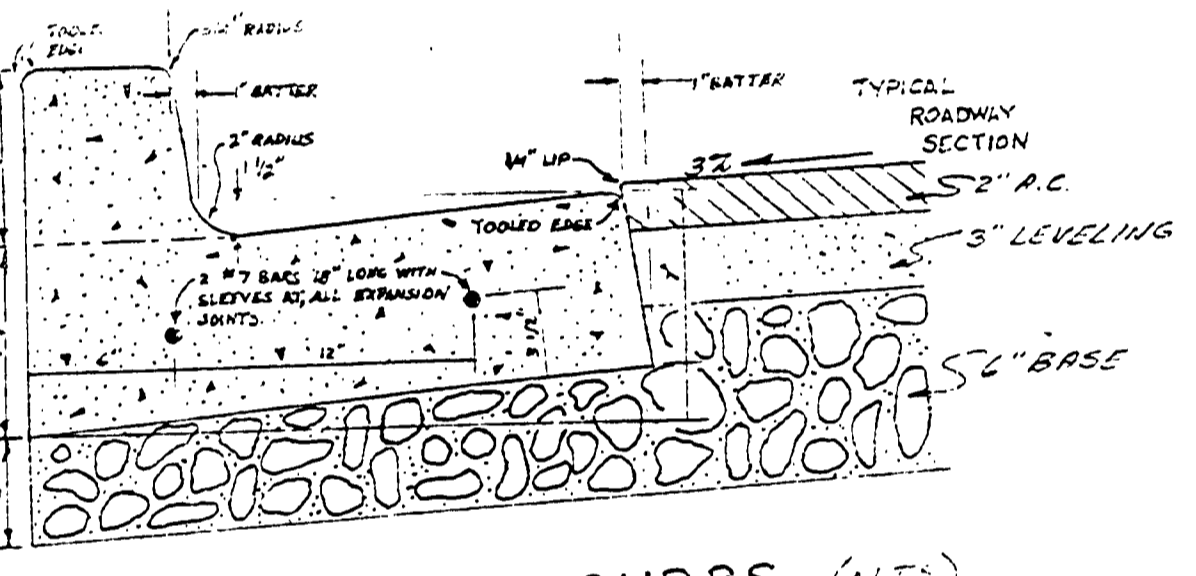
WATER FIRE HYDRANT ASSEMBLY (NTS)



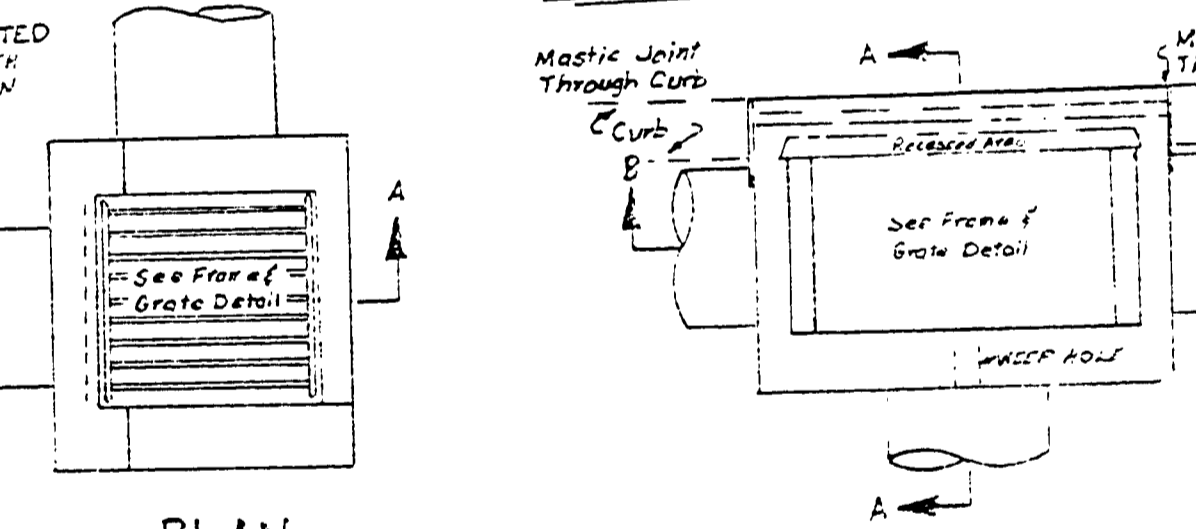
GENERAL PLAN OF CHANNEL INTERSECTION



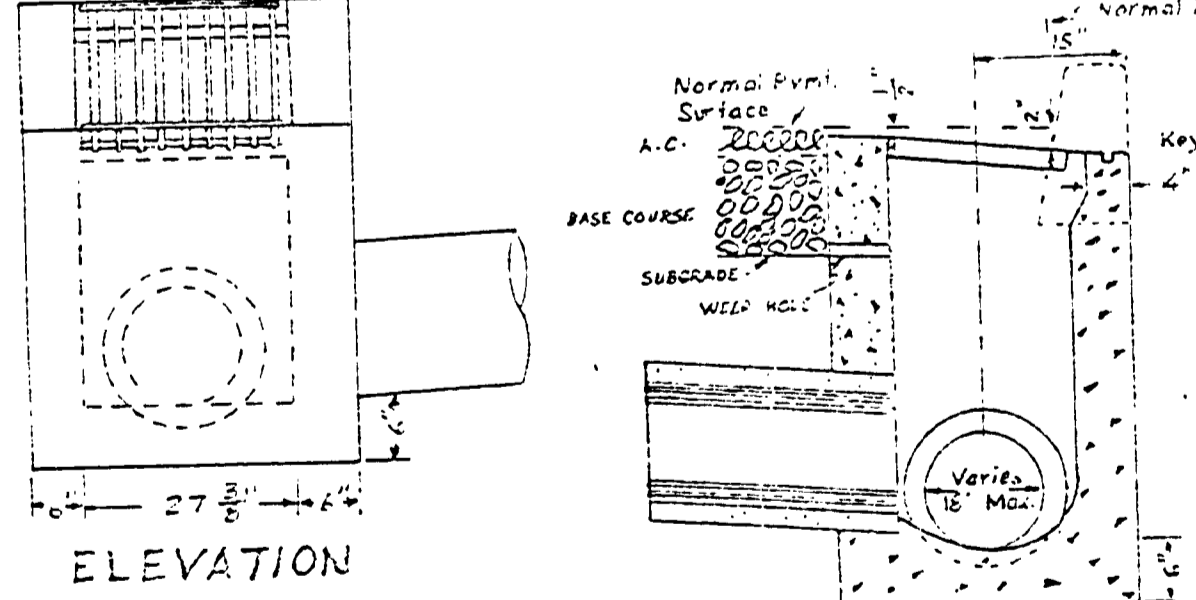
TYPICAL WEEPHOLE INSTALLATION



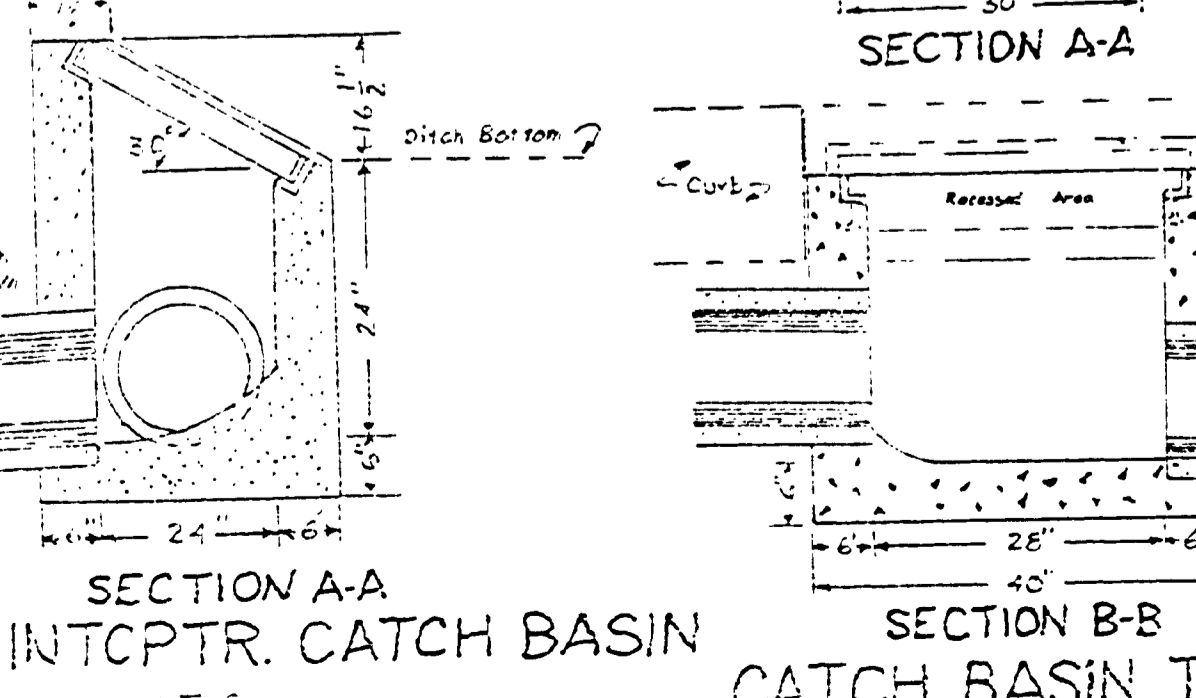
CURBS (NTS)



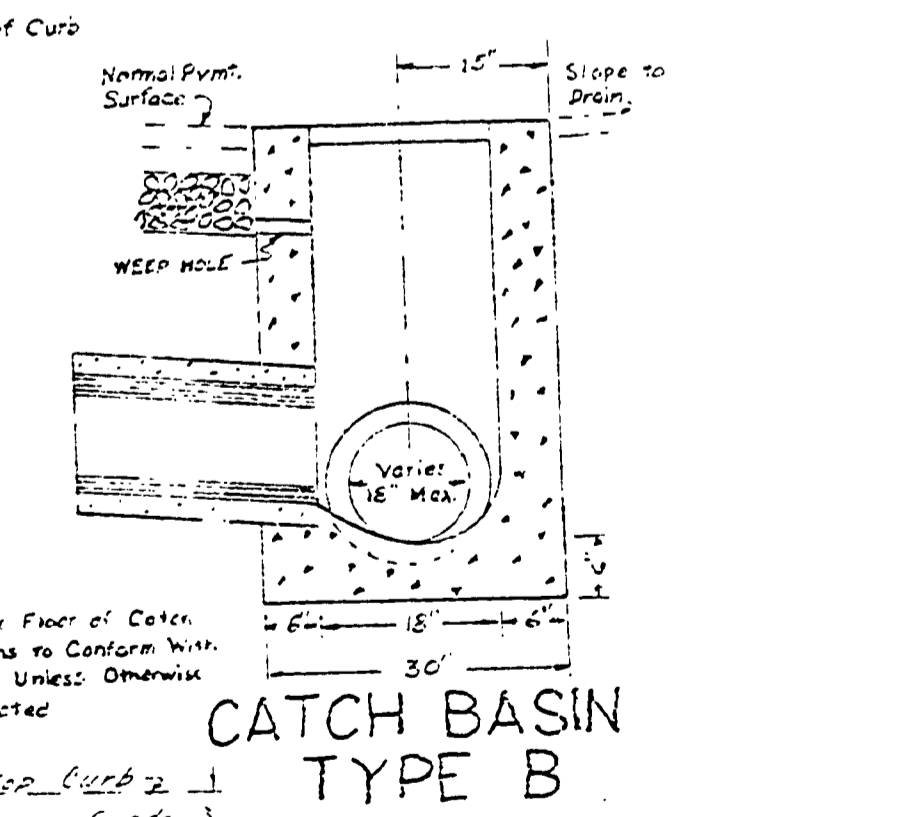
PLAN



ELEVATION



DITCH INTERCEPT CATCH BASIN



CATCH BASIN TYPE A

- 12" = 3'-3"
- 15" = 3'-6"
- 18" = 5'-0"
- 21" = 4'-0"
- 24" = 4'-3"

RD378003