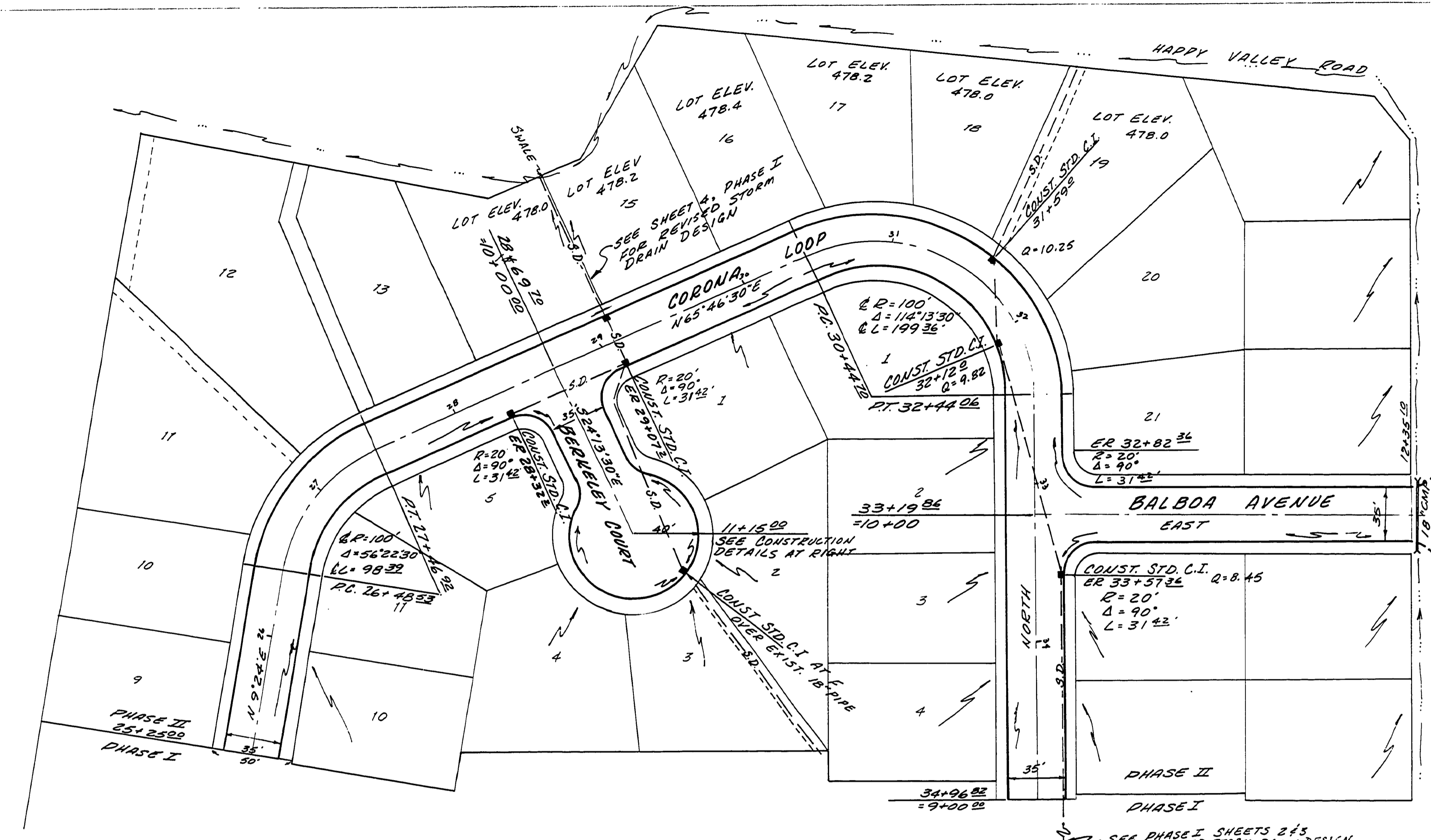
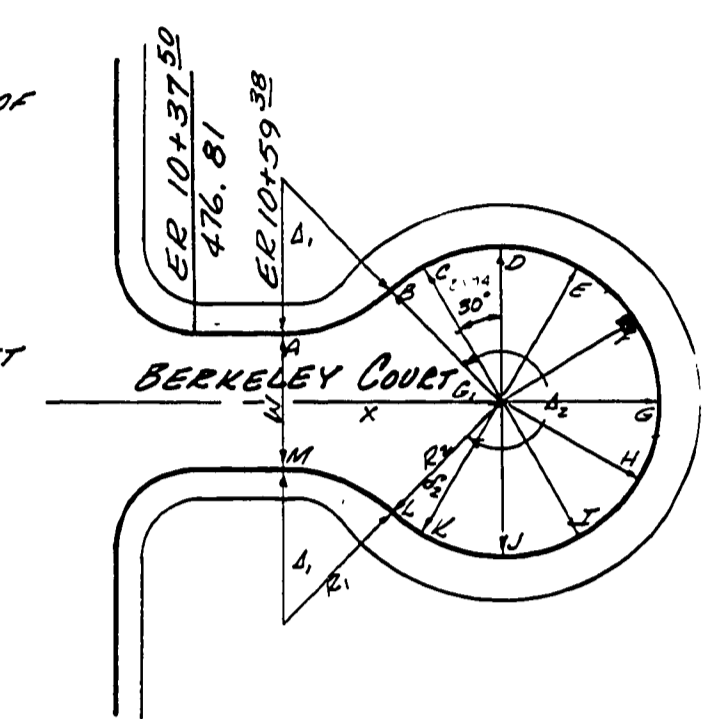


FILED

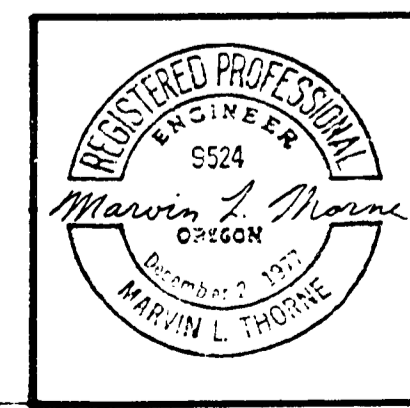
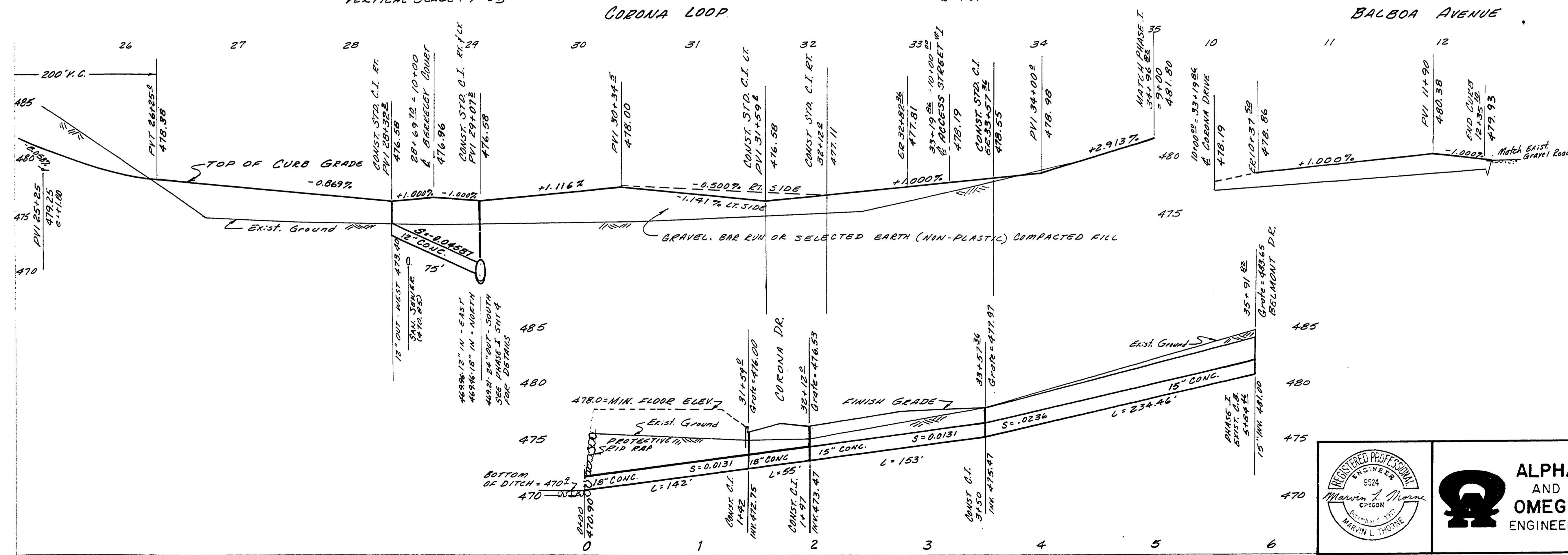
Date: 2-10-97 By: JP
This survey consists of:
Map:
Narrative:
Corner Rpt:
DOUGLAS COUNTY SURVEYOR

- NOTES:
1. THE STORM SEWER ANALYSIS IS BASED ON USING CONCRETE PIPE. IF ANY OTHER MATERIAL IS USED, THE SIZE OF PIPE AND GRADES MUST HAVE PRIOR WRITTEN APPROVAL BY THE ENGINEER AND THE COUNTY PUBLIC WORKS DEPARTMENT.
 2. ANY CHANGES IN ALIGNMENT OR GRADES MUST HAVE PRIOR WRITTEN APPROVAL BY THE ENGINEER AND AFFECTED AGENCIES, AND NOTED ON THE "RECORD DRAWINGS".
 3. SEE PHASE I SHEET 4 FOR CONTINUATION OF STREETS AND STORM DRAINS.
 4. SEE PHASE I SHEET 5 FOR APPROVED 6" WATER AND 8" SAN. SEWER DESIGNS.
 5. ALL STREET DIMENSIONS ARE TO BACK OF CURB. SEE TYPICAL STREET SECTION 'C' ON PHASE I SHEET 4. CONSTRUCT 35' STREET WITH 2% CROWN, 2" A.C. OVER 11" OF 1" MINUS COMPACTED GRAVEL, CONSTRUCTED WITH COUNTY STANDARD CURB & GUTTER, AND WEED HOLES AS INDICATED.
 6. ALL FLOOR FOUNDATIONS ARE RECOMMENDED TO BE BUILT 1/2 FEET ABOVE THE 100 YEAR FLOOD. (100 YR. FLOOD = 477.0').



HORIZONTAL SCALE: 1" = 50'
VERTICAL SCALE: 1" = 5'

W	R ₁	A ₁	R ₂	A ₂	S ₂	X
35'	40'	44°02'35"	40'	268°05'50"	44°02'35"	55.62'
A	B	C	D	E	F	G
477.03	477.34	477.44	477.65	477.86	477.88	478.09
H	I	J	K	L	M	G ₁
478.07	477.86	477.65	477.44	477.34	477.03	477.91



ALPHA AND OMEGA ENGINEERS

HONARD BURDETTE
SANTA MARIA ESTATES
PHASE II
STREET & STORM DRAIN

SHEET OF 3	2
PROJ. #	16.0504
DATE	JULY, 1980
SCALE:	HORIZ. 1" = 50' VERT. 1" = 5'
DWG NO.	16-5

RD378002