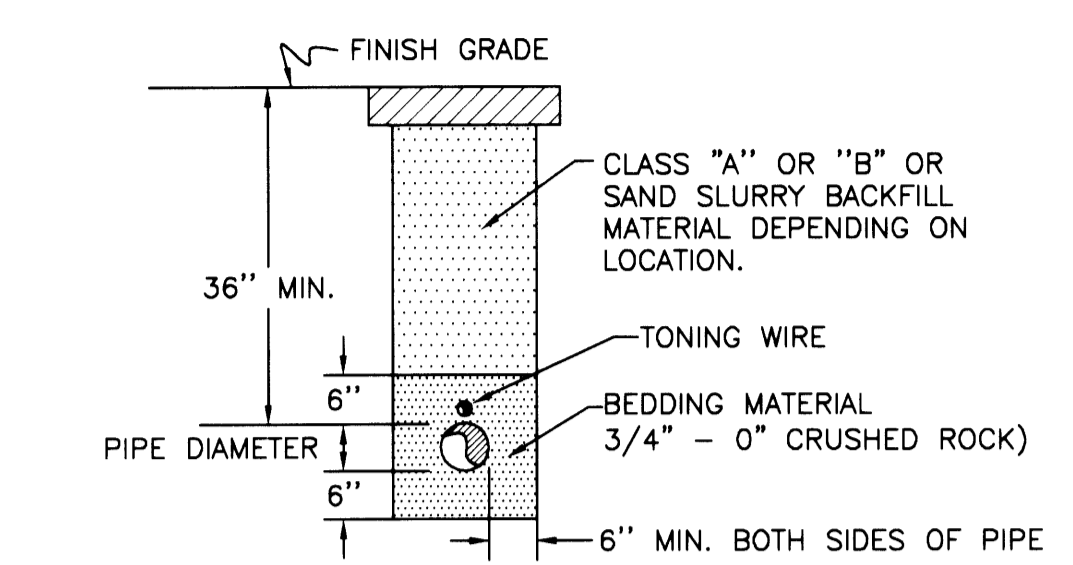
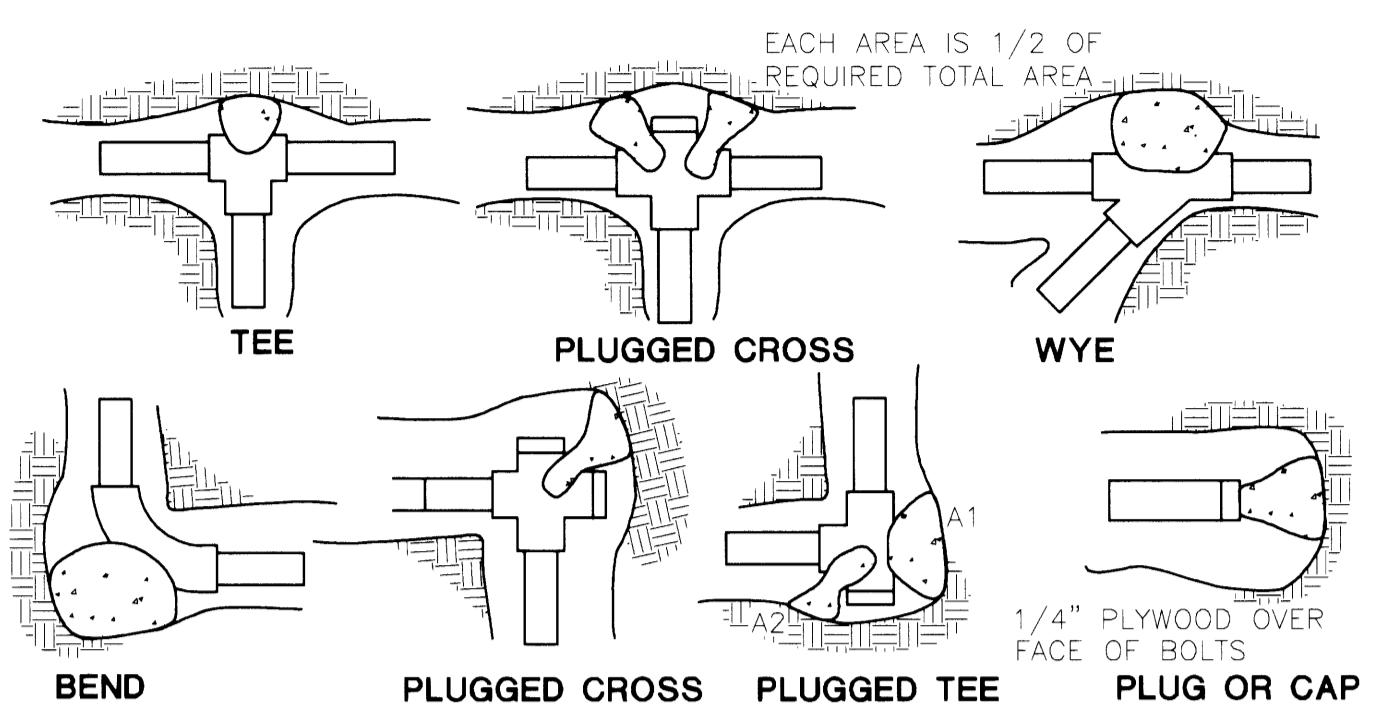


TYPICAL WATER MAINLINE TRENCH DETAIL



TYPICAL SERVICE LINE TRENCH DETAIL



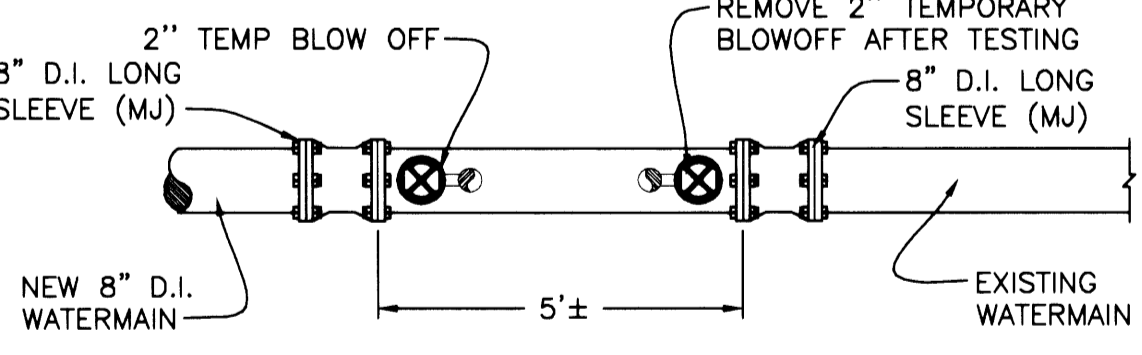
FITTING SIZE	TEE, WYE, PLUG, OR CROSS	90° BEND PLUGGED CROSS	TEE PLUGGED ON RUN		22 1/2" BEND	11 1/4" BEND
			A1	A2		
2	0.2	0.4	0.6	0.4	0.2	--
3	0.5	0.8	1.2	0.8	0.5	0.2
4	1.0	1.4	1.9	1.4	1.0	0.4
6	2.1	3.0	4.3	3.0	1.6	1.0
8	3.8	5.3	7.6	5.4	2.9	1.5
10	5.9	8.4	11.8	8.4	4.6	2.4
12	8.5	12.0	17.0	12.0	6.6	3.4
14	11.5	16.3	23.0	16.3	8.9	4.6
16	15.0	21.3	30.0	21.3	11.6	6.0
18	19.0	27.0	38.0	27.0	14.6	7.6
20	23.5	33.3	47.0	33.3	18.1	9.4
24	34.0	48.0	68.0	48.0	26.2	13.6

NOTE: ABOVE BEARING AREAS BASED ON TEST PRESSURE OF 150 p.s.i. AND AN ALLOWABLE SOIL BEARING STRESS OF 2,000 LBS. PER SQUARE FOOT. TO COMPUTE BEARING AREAS FOR DIFFERENT TEST PRESSURES AND SOIL BEARING STRESSES, USE THE FOLLOWING EQUATION: BEARING AREA = (TEST PRESSURE/150) x (2000/SOIL BEARING STRESS) x (TABLE VALUE)

- NOTES:**
1. CONCRETE THRUST BLOCKING TO BE POURED AGAINST UNDISTURBED EARTH.
 2. KEEP CONCRETE CLEAR OF JOINT AND ACCESSORIES.
 3. THE REQUIRED THRUST BEARING AREAS FOR SPECIAL CONNECTIONS ARE SHOWN ENCIRCLED ON THE PLANS, E.G. (15) INDICATES 15 SQUARE FEET BEARING AREA REQUIRED.
 4. IF NOT SHOWN ON PLANS REQUIRED BEARING AREAS AT FITTING SHALL BE AS INDICATED ABOVE, ADJUSTED IF NECESSARY, TO CONFORM TO THE TEST PRESSURE(S) AND ALLOWABLE SOIL BEARING STRESS(ES) STATED IN THE SPECIAL SPECIFICATIONS.
 5. BEARING AREAS AND SPECIAL BLOCKING DETAILS SHOWN ON PLANS. TAKE PRECEDENCE OVER BEARING AREAS AND BLOCKING DETAILS SHOWN ON THIS STANDARD DETAIL.

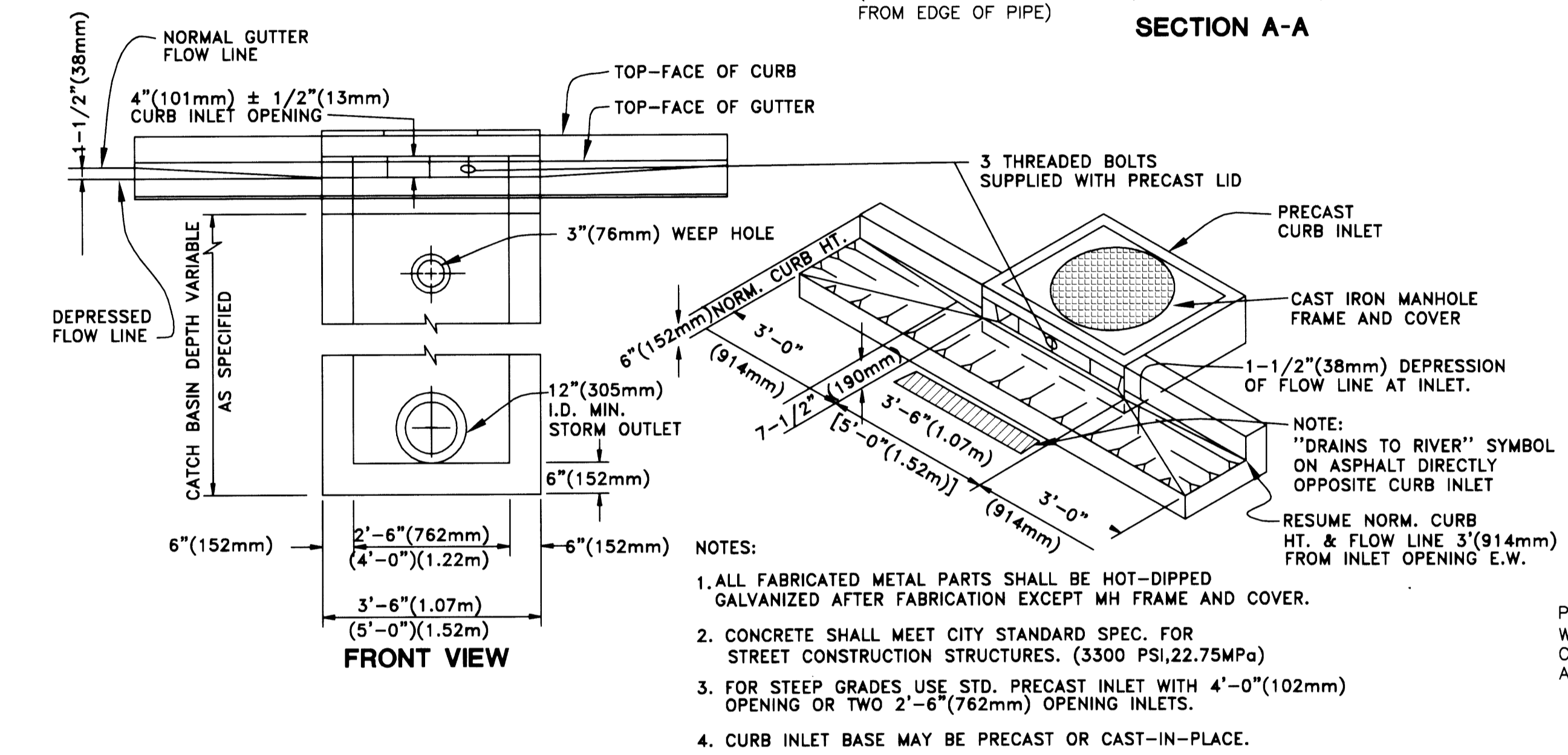
THRUST BLOCK DETAILS AND INFORMATION
NO SCALE

- NOTES:**
- ALL PIPE AND FITTINGS FOR TIE-IN TO BE CLEAN AND WIPED w/CHLORINE PRIOR TO INSTALLATION
- PIPE SIZES ARE SHOWN ON PLANS
- CONTRACTOR TO ALIGN NEW MAINLINE IN BOTH ALIGNMENT AND GRADE w/EXISTING WATERLINE. CONNECTION TO EXISTING WATERLINE CAN ONLY BE MADE AFTER INSTALLATION, TESTING & DISINFECTION OF NEW WATERLINE HAS BEEN COMPLETED.

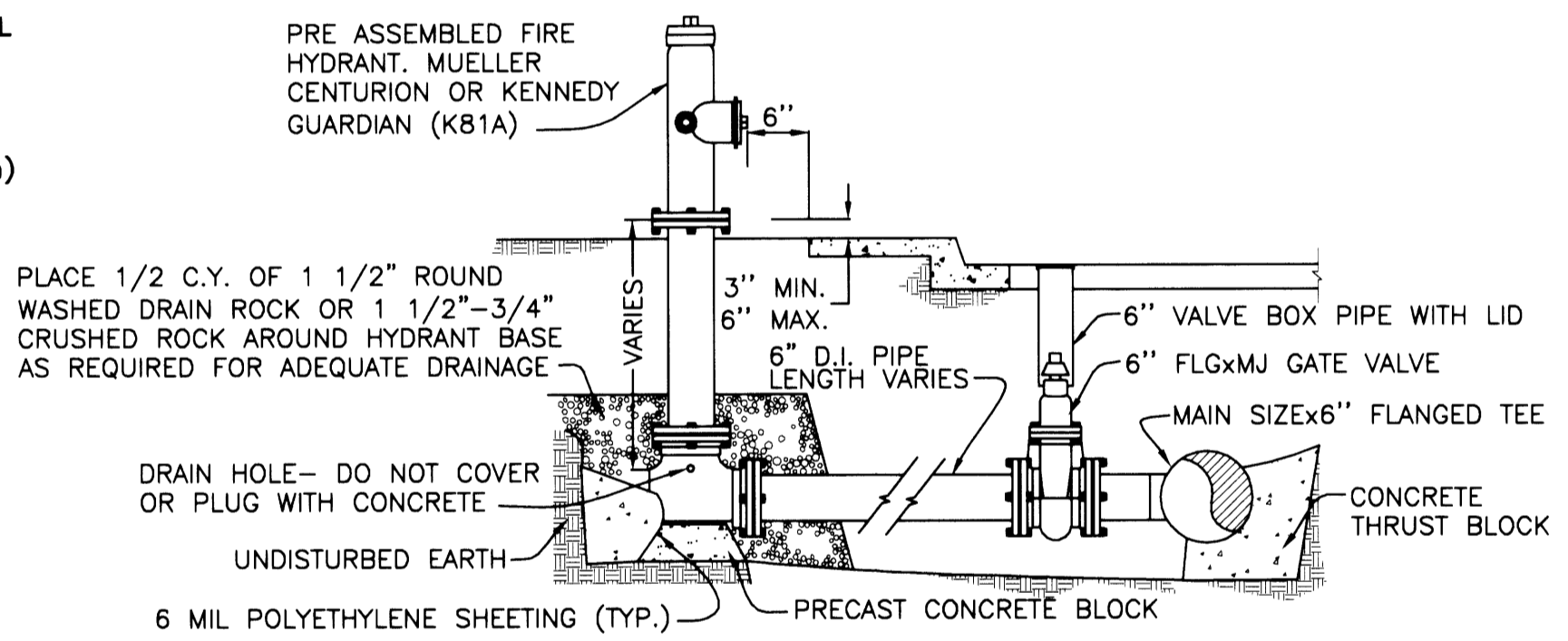


TYPICAL WATER TIE-IN DETAIL

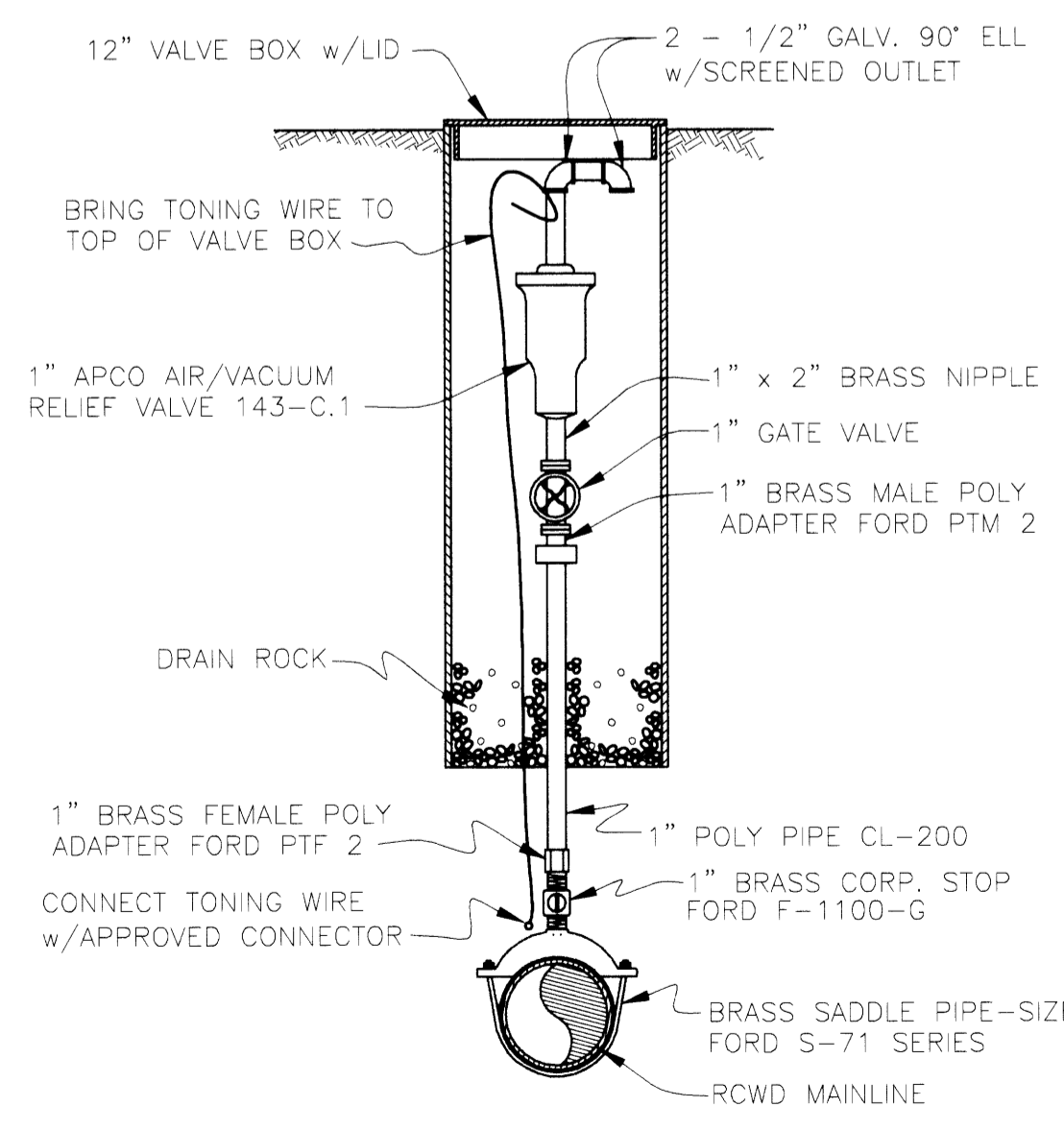
CALL BEFORE YOU DIG!
ONE CALL® (800) 332-2344
 OAR 952-001-0010 THROUGH
 OAR 952-001-0090



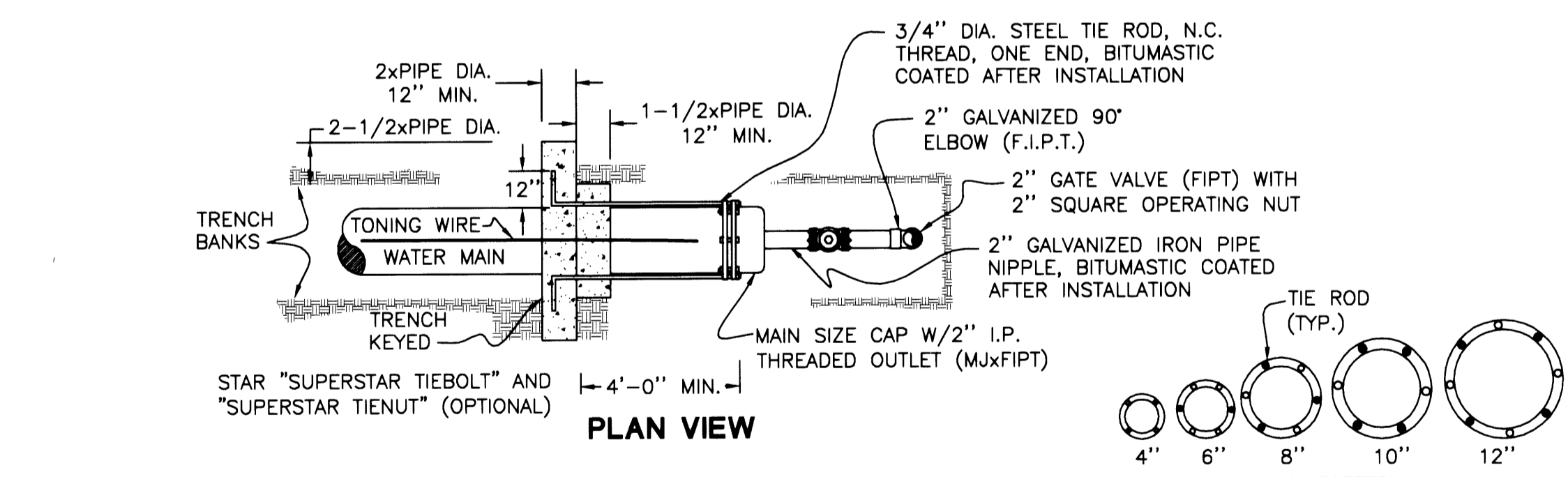
TYPICAL CG-3 INLET DETAIL



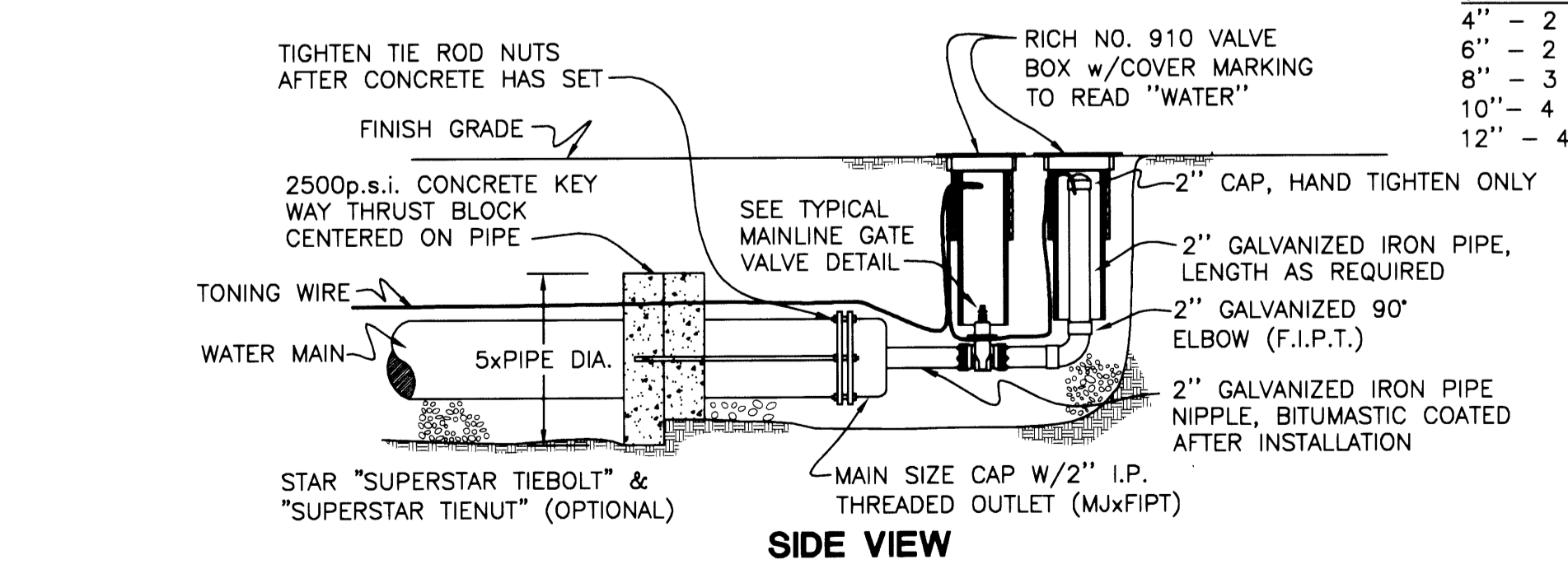
TYPICAL FIRE HYDRANT INSTALLATION (THRUST BLOCKED)



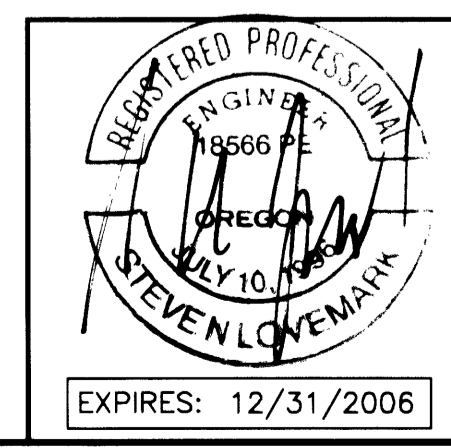
TYPICAL AIR RELIEF DETAIL



TYPICAL 2\"/>



TYPICAL 2\"/>



Rev.	Date	Dwg	Description
1	6/2/04	BWC	COUNTY & AGENCY REVIEW
2	1/17/05	ANY	AS-BUILTS

i.e. ENGINEERING
 741 SE Jackson Street
 Roseburg, Oregon 97470
 PHONE (541) 673-0166
 FAX (541) 440-9392
 email@ieengineering.com

Project Name: **RIVER CREST ESTATES**

Title: **DETAILS**

DES DMA	PROJECT NO. 1944-0175
DWG BWC	DATE: MAY 4, 2004
CHK SNL	SCALE: AS SHOWN
APP SNL	SHEET: 10 OF 13