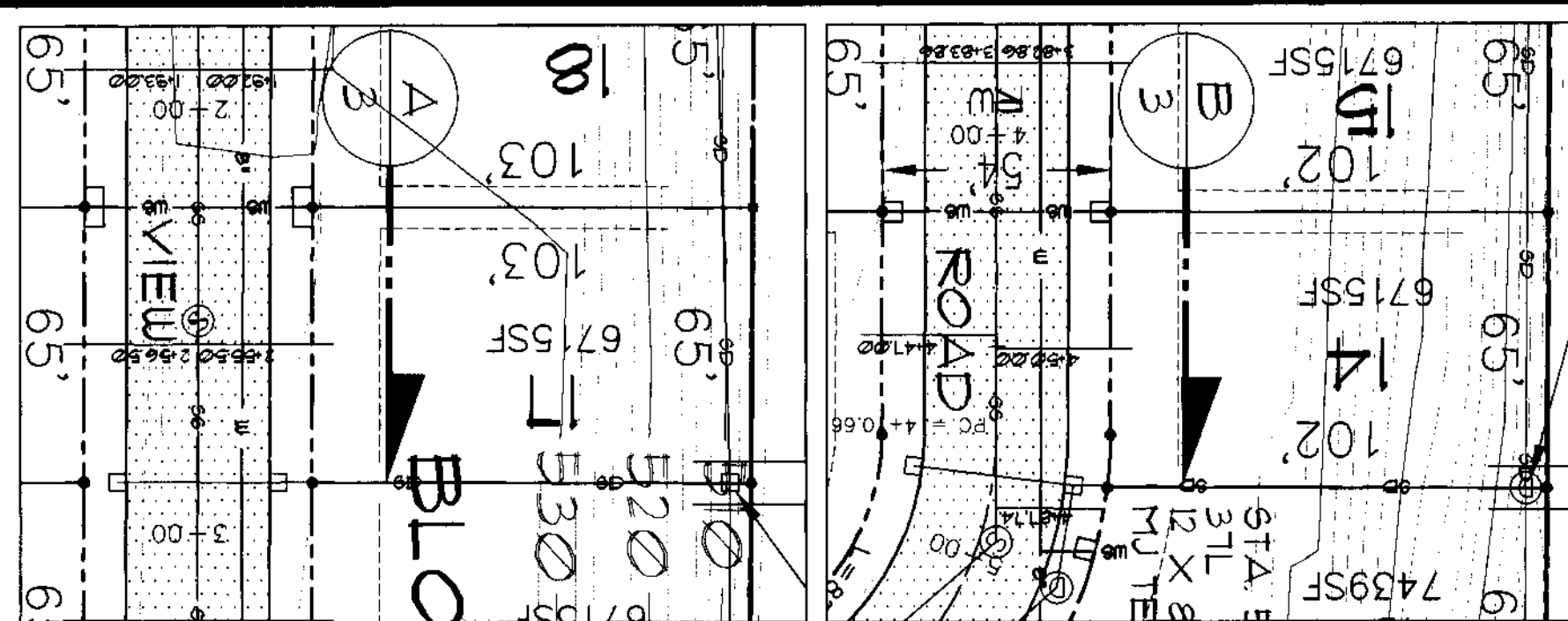
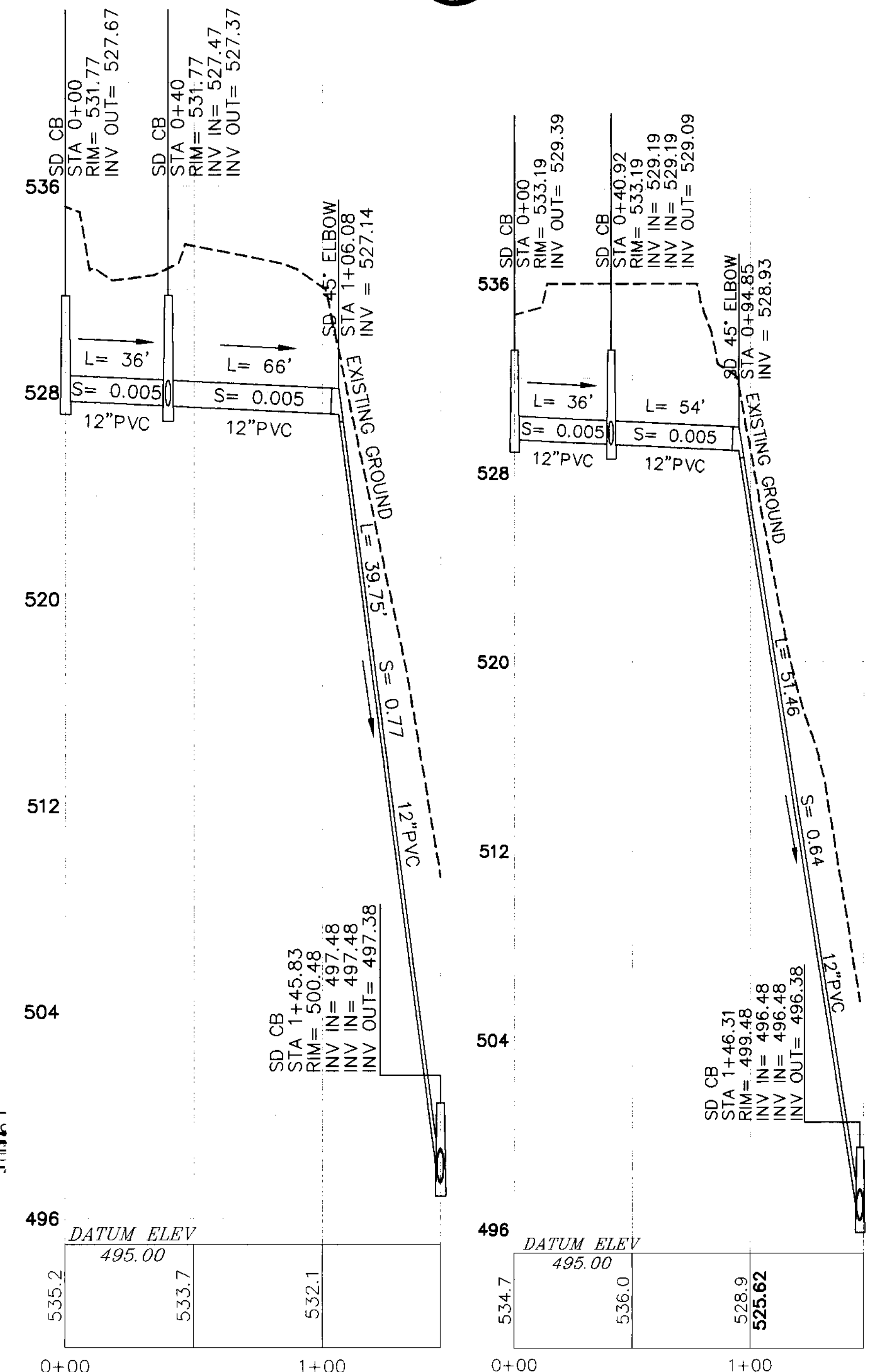


Date: 5/11/2001
 This survey consists of:
 Map:
 Narrative:
 Corner Rpt:
 DOUGLAS COUNTY SURVEYOR

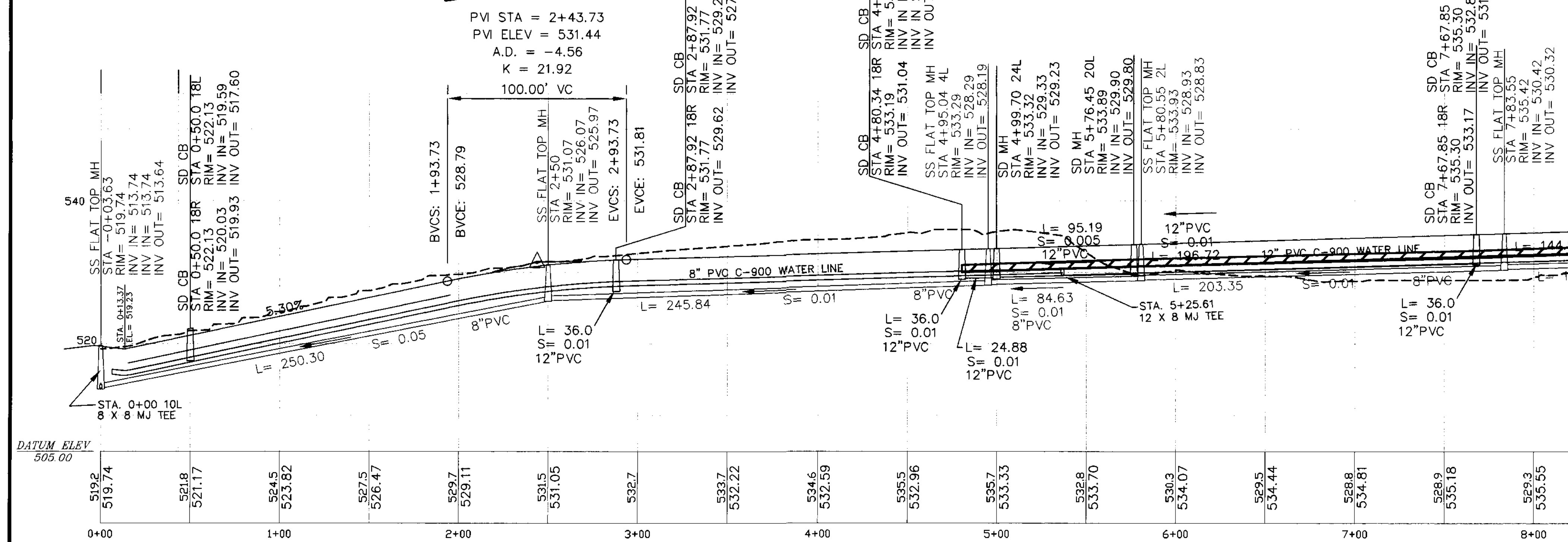


A STORM LINE PLAN SCALE: 1"=40'
B STORM LINE PLAN SCALE: 1"=40'



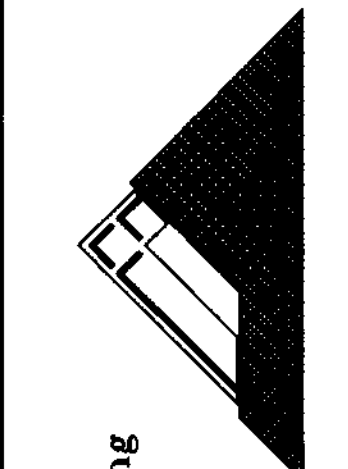
A STORM LINE PROFILE SCALE: HORIZ: 1"=40' VERT: 1"=4'
B STORM LINE PROFILE SCALE: HORIZ: 1"=40' VERT: 1"=4'

RIVER VIEW ROAD PLAN SCALE: 1"=40'

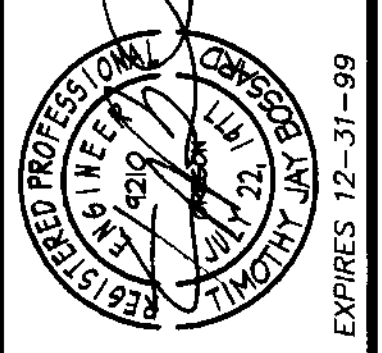


RIVER VIEW ROAD PROFILE SCALE: HORIZ: 1"=40' VERT: 1"=10'

REVISIONS	
STORM DRAIN	1/28/99
REVISED WATERLINE PER R.C.I.W.D.	2/9/99
REVISED WATER AND SANITARY	5/16/99
REVISED CHAIR ALIGNMENT	7/24/00
REVISED PER "AS-BUILT" MARKUPS	2/1/00



T.J. BOSSARD, INC.
 Civil & Structural Engineering
 133 N.W. "D" Street
 Grants Pass, OR 97526
 TEL.: (541) 479-5774
 FAX.: (541) 471-6084



RIVER VIEW SUBDIVISION
 RIVER VIEW ROAD
 PLAN & PROFILE STA. 0+00 TO 8+00

THE BURDETTE LOVING TRUST
 280 EAST DELMAR AVENUE #399
 PASADENA, CALIFORNIA 91101

DRAWN BY: L.W.
 CHECKED BY:
 DATE: 8/23/99
 SCALE: AS SHOWN
 CADDFILE: 99049-03.PS
 JOB NO.: 99-049

00000020