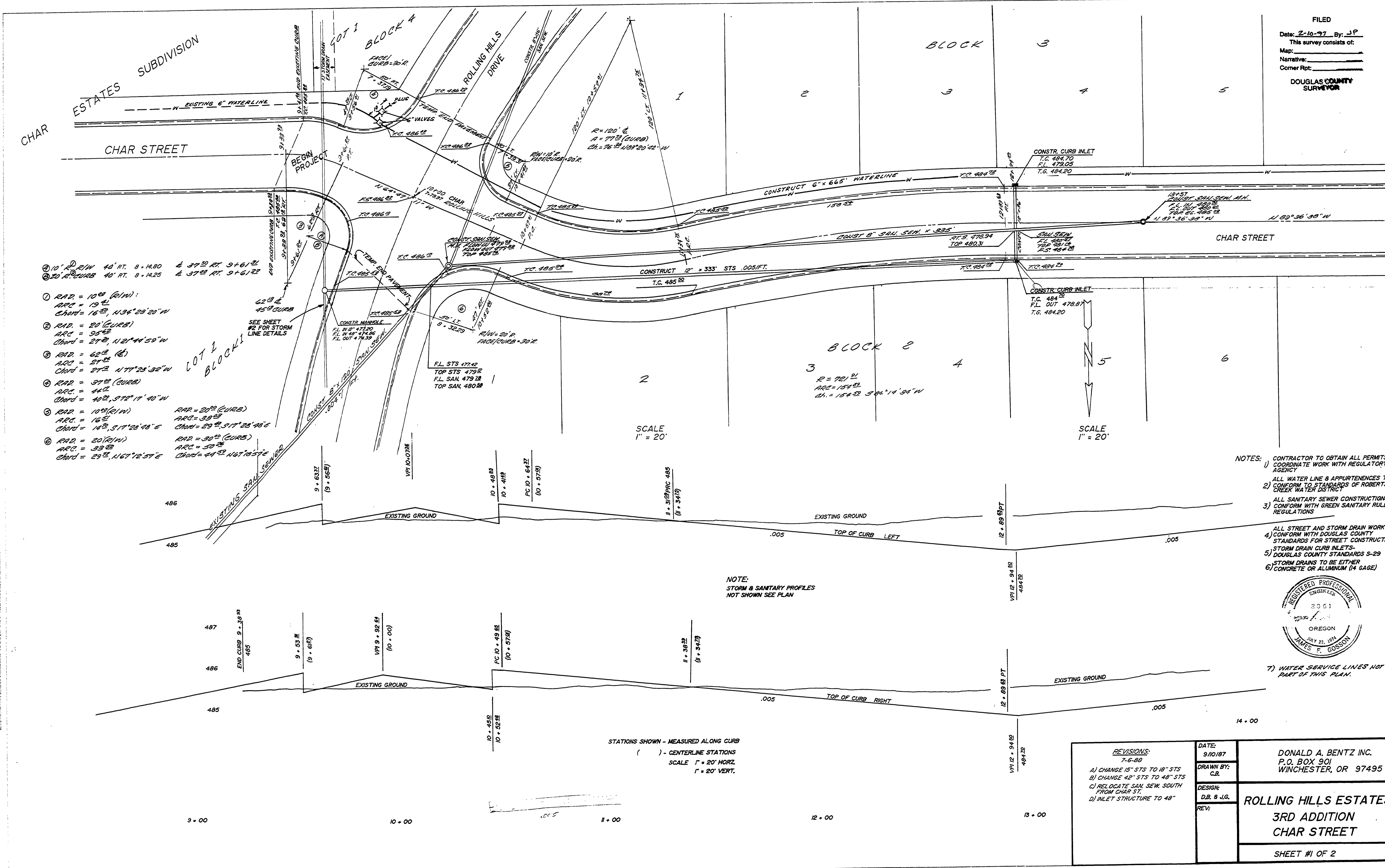
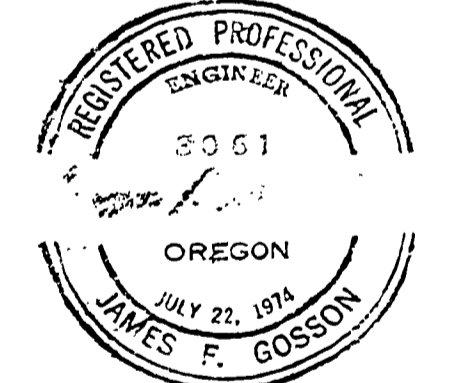


FILED
 Date: 2-10-77 By: J.P.
 This survey consists of:
 Map: _____
 Narrative: _____
 Corner Rpt: _____
 DOUGLAS COUNTY
 SURVEYOR



- ① 10' R.O.W 40' RT. 8-14.80 ± 37.30 RT. 9+61.22
- ② 20' R.CURB 40' RT. 8-14.25 ± 37.25 RT. 9+61.22
- ③ RAD. = 10° (R/W):
 ARC = 19.21'
 Chord = 16.22' N34°28'20"W
- ④ RAD. = 20' (CURB):
 ARC = 35.42'
 Chord = 27.22' N27°44'50"W
- ⑤ RAD. = 62.2° (C):
 ARC = 27.22'
 Chord = 27.22' N77°28'32"W
- ⑥ RAD. = 37.2° (CURB):
 ARC = 44.22'
 Chord = 40.22' S71°11'40"W
- ⑦ RAD. = 10° (R/W) RAD. = 20' (CURB)
 ARC = 19.21' ARC = 35.42'
 Chord = 16.22' S17°28'48"E Chord = 29.22' S17°28'48"E
- ⑧ RAD. = 20' (R/W) RAD. = 30' (CURB)
 ARC = 33.22' ARC = 50.22'
 Chord = 25.22' N67°12'51"E Chord = 44.22' N67°12'51"E

- NOTES:
- 1) CONTRACTOR TO OBTAIN ALL PERMITS & COORDINATE WORK WITH REGULATORY AGENCY
 - 2) ALL WATER LINE & APPURTENANCES TO CONFORM TO STANDARDS OF ROBERTS CREEK WATER DISTRICT
 - 3) ALL SANITARY SEWER CONSTRUCTION TO CONFORM WITH GREEN SANITARY RULES & REGULATIONS
 - 4) ALL STREET AND STORM DRAIN WORK TO CONFORM WITH DOUGLAS COUNTY STANDARDS FOR STREET CONSTRUCTION
 - 5) STORM DRAIN CURB INLETS - DOUGLAS COUNTY STANDARDS S-29
 - 6) STORM DRAINS TO BE EITHER CONCRETE OR ALUMINUM (1/4 GAGE)
 - 7) WATER SERVICE LINES NOT A PART OF THIS PLAN.



REVISIONS: 7-6-80 A) CHANGE 15" STS TO 18" STS B) CHANGE 42" STS TO 48" STS C) RELOCATE SAN. SEW. SOUTH FROM CHAR ST. D) INLET STRUCTURE TO 48"	DATE: 9/10/87	DONALD A. BENTZ INC. P.O. BOX 901 WINCHESTER, OR 97495 ROLLING HILLS ESTATES 3RD ADDITION CHAR STREET SHEET #1 OF 2
	DRAWN BY: C.B.	
	DESIGN: D.B. & J.G. REV:	

STATIONS SHOWN - MEASURED ALONG CURB
 () - CENTERLINE STATIONS
 SCALE 1" = 20' HORIZ.
 1" = 20' VERT.

RD0375A1