

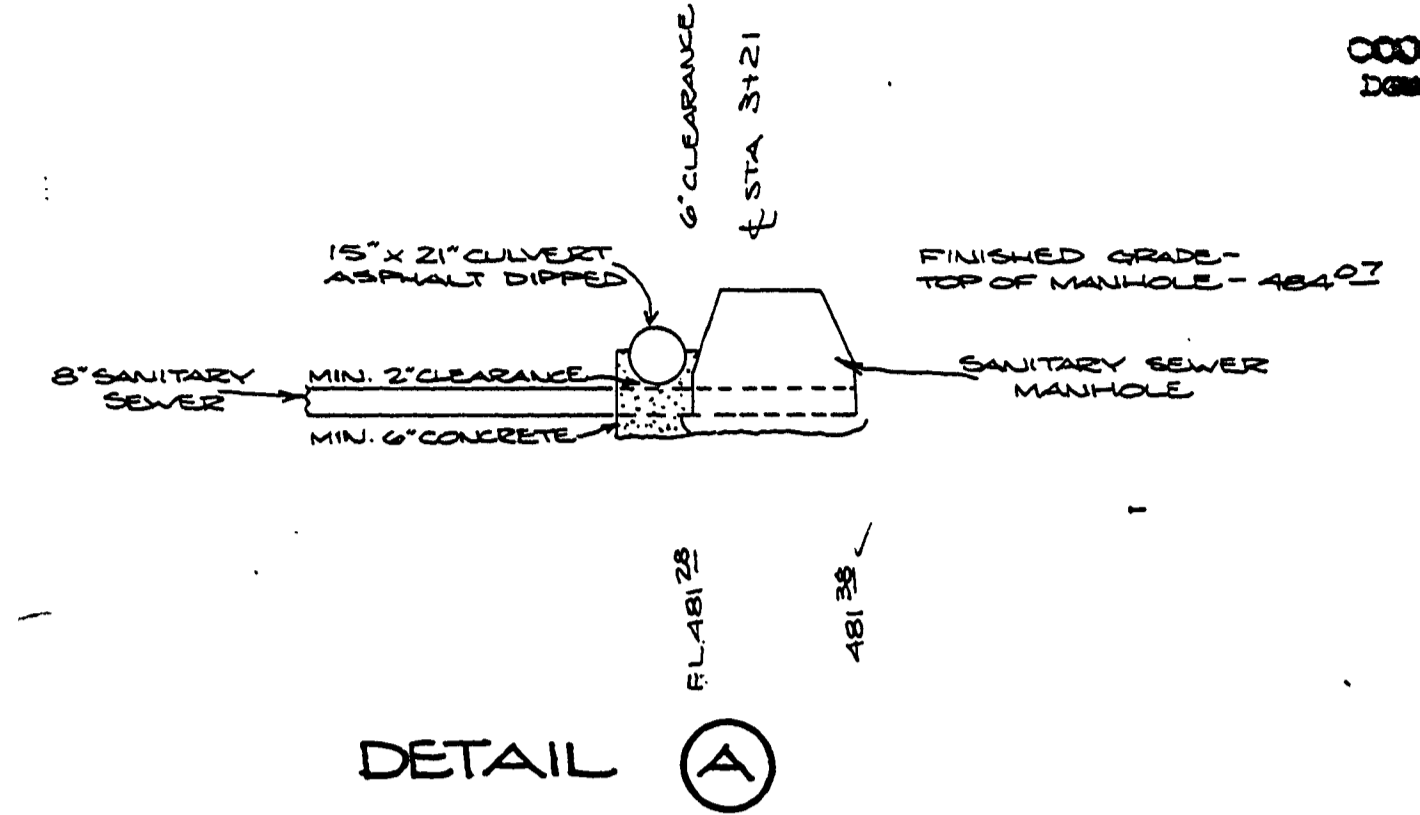
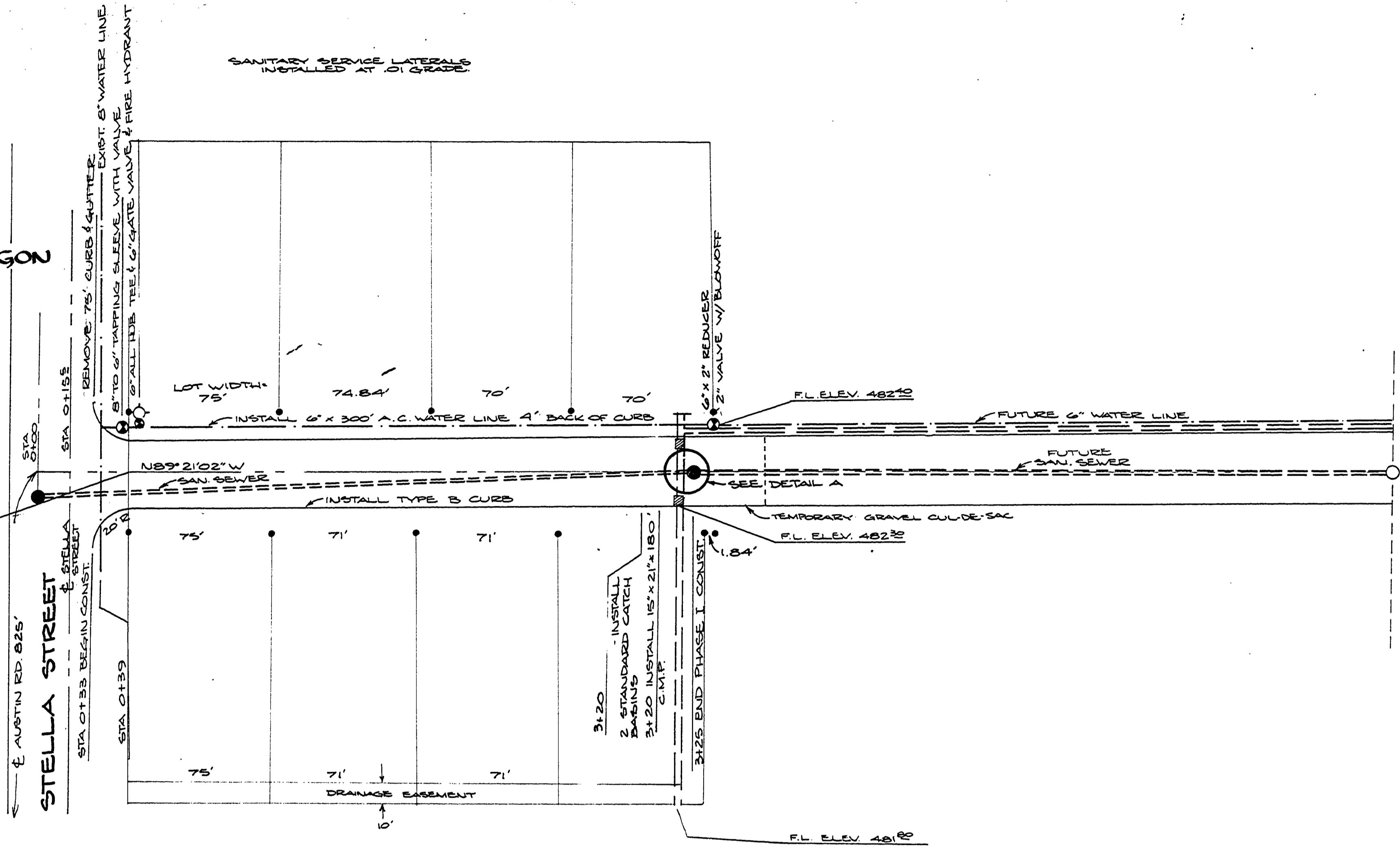
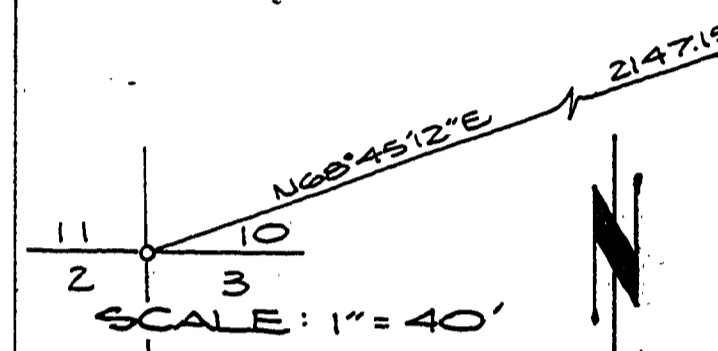
SECTION 10, T28S, R6W, W.M.

CHAR STREET
BOYD ENTERPRISES
SUBDIVISION
GREEN DISTRICT
DOUGLAS COUNTY, OREGON

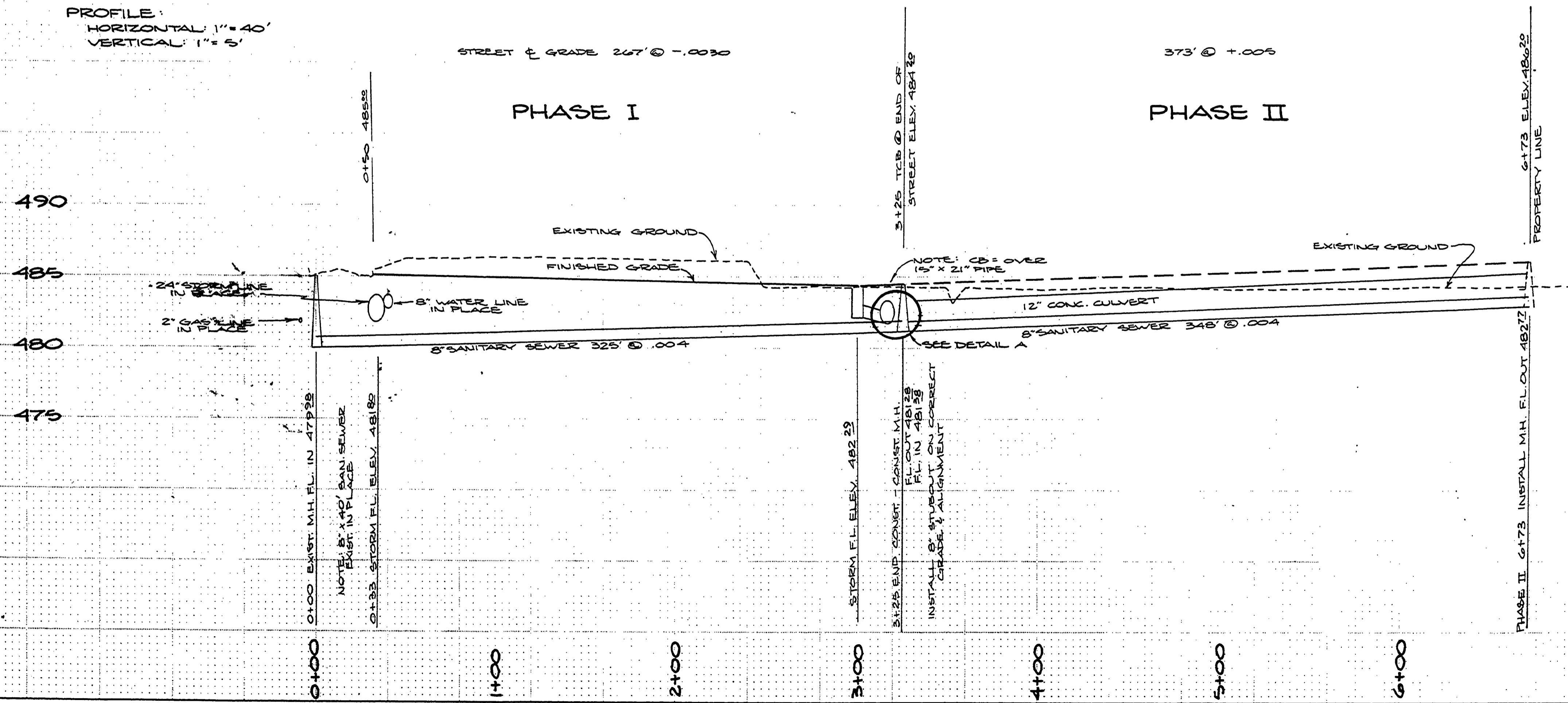
1980
by: Roseburg Paving Co.
LYING IN SECTION 10, T28S, R6W, W.M.

• - INDICATES SET 3/8" IRON ROD

DATE	BY
APPROVED	PLOTTED
NOTE BOOK	REPLATE
NO.	NO.
NO.	NO.
NO.	NO.



PROFILE:
HORIZONTAL: 1" = 40'
VERTICAL: 1" = 5'



DATE	BY
APPROVED	PLOTTED
NOTE BOOK	REPLATE
NO.	NO.
NO.	NO.
NO.	NO.

[Handwritten signature]

[Handwritten initials]

00050002

AS-BUILT 11/80

Char Street: sanitary sewer, storm sewer and water systems		DATE: 9/80
BOYD ENTERPRISES		DRAWN BY: HOPKINS
SUBDIVISION CHAR STREET		CHECKED BY:
ROSEBURG PAVING CO.		JOB NO.:
Highway 99 South Roseburg, Ore. 679-6744		SHEET NO. 2
		OF 2 SHEETS

PLATE 4-SINGLE PLAN AND CROSS SECTION-FULL DOT
PRINTED IN U.S.A.

M.P. 0-00-0-05

575

1980

CHAR STREET, DOUGLAS COUNTY, OREGON, SECTION 10, T28S, R6W, W.M.