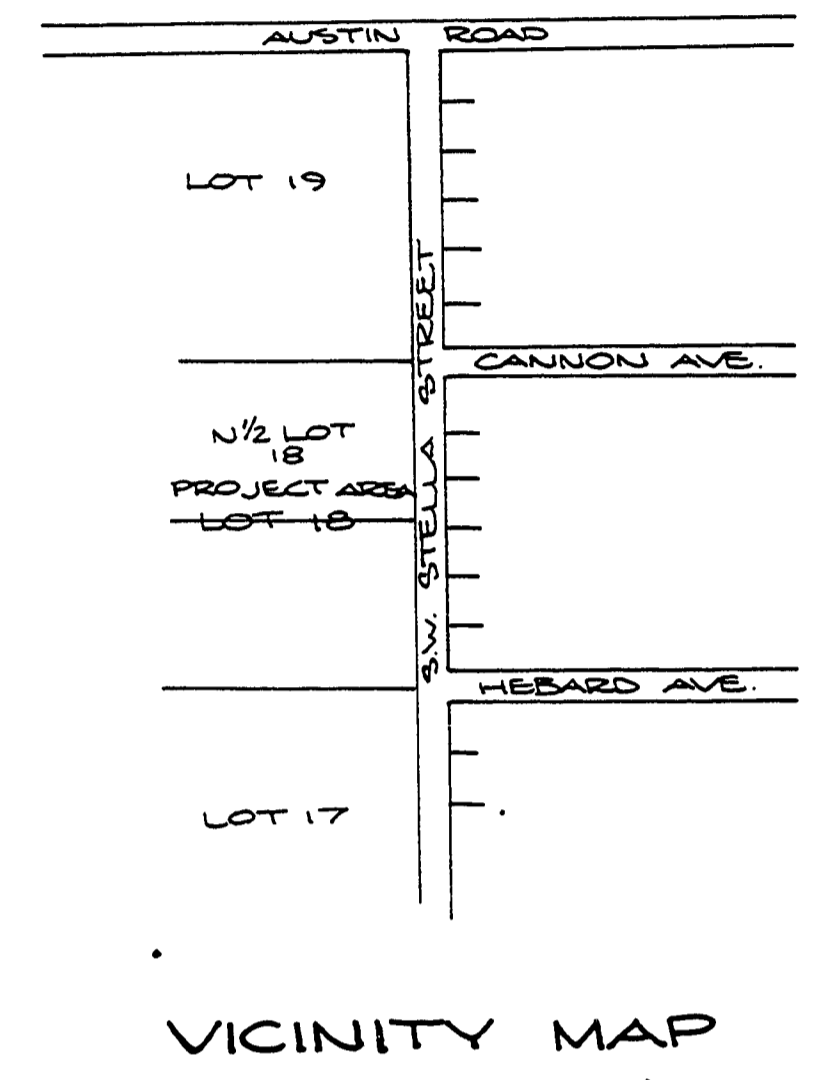
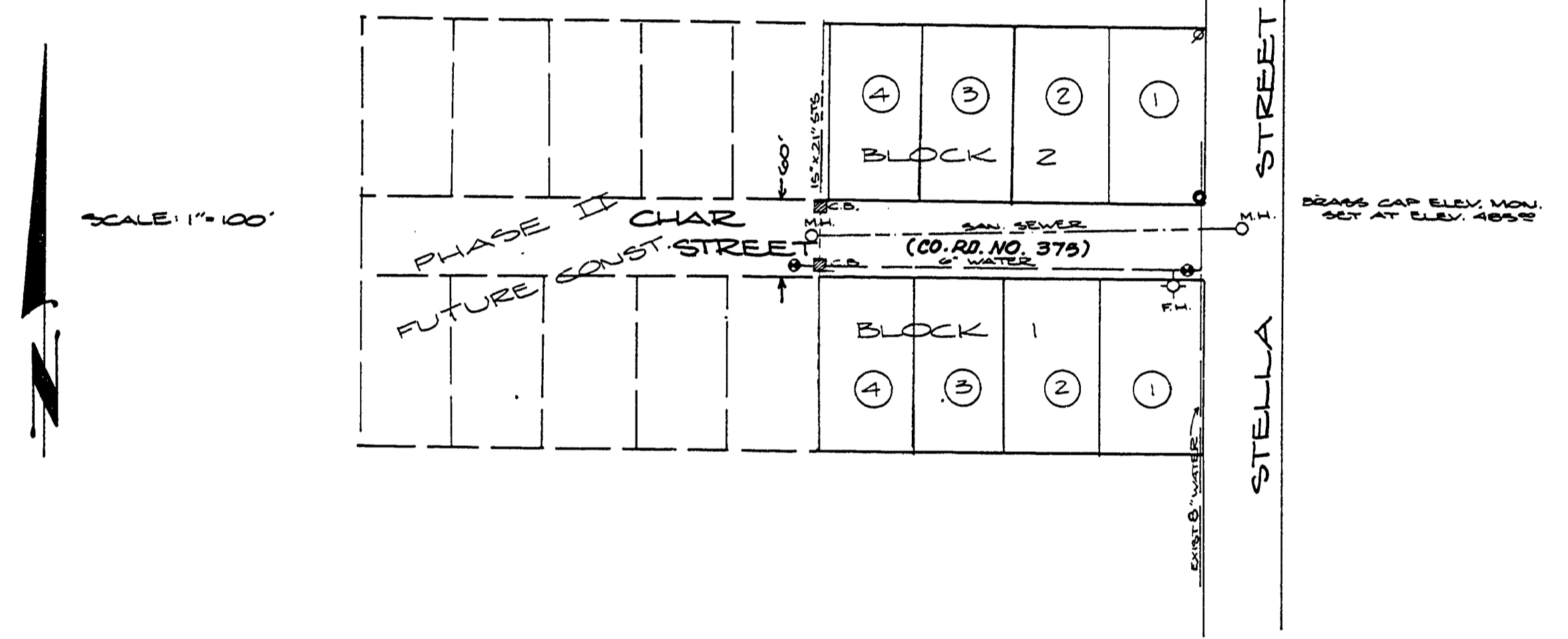
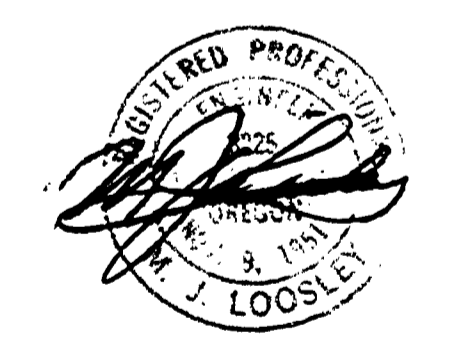
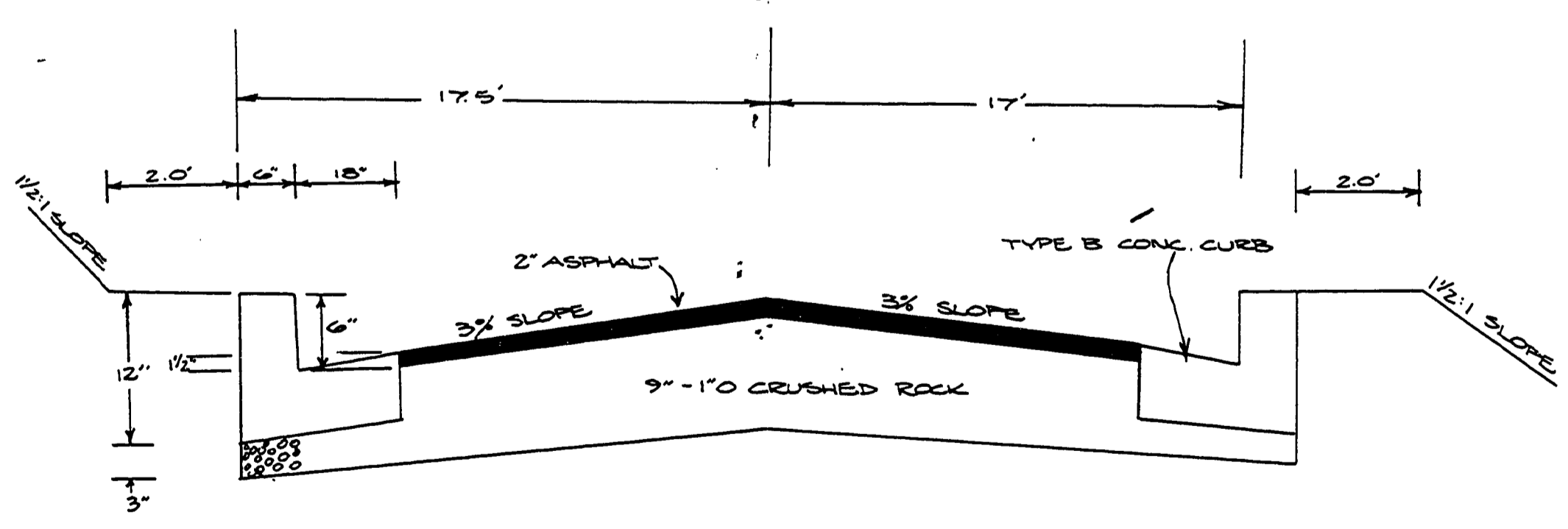


CHAR STREET
MCCOY ENTERPRISES
SUBDIVISION
GREEN DISTRICT
DOUGLAS COUNTY, OREGON
1980
 by: Roseburg Paving Co.

FILED
 AUG 10 1987
 COUNTY SURVEYOR
 DOUGLAS COUNTY, ORE.



INDEX:	PAGE
LAYOUT, INDEX & DETAILS	1
SANITARY SEWER, STORM SEWER & WATER SYSTEMS	2



AS-BUILT 11/80

Layout, Index & Details		DATE: 4/80
BOYD ENTERPRISES SUBDIVISION	ENGINEER'S SIGNATURE	DRAWN BY: HOPKINS
		CHECKED BY:
ROSEBURG PAVING CO. Hwy. 99 South Roseburg, Ore. 679-6744		JOB NO.:
		SHEET NO.:
		OF 2 SHEETS

10005000