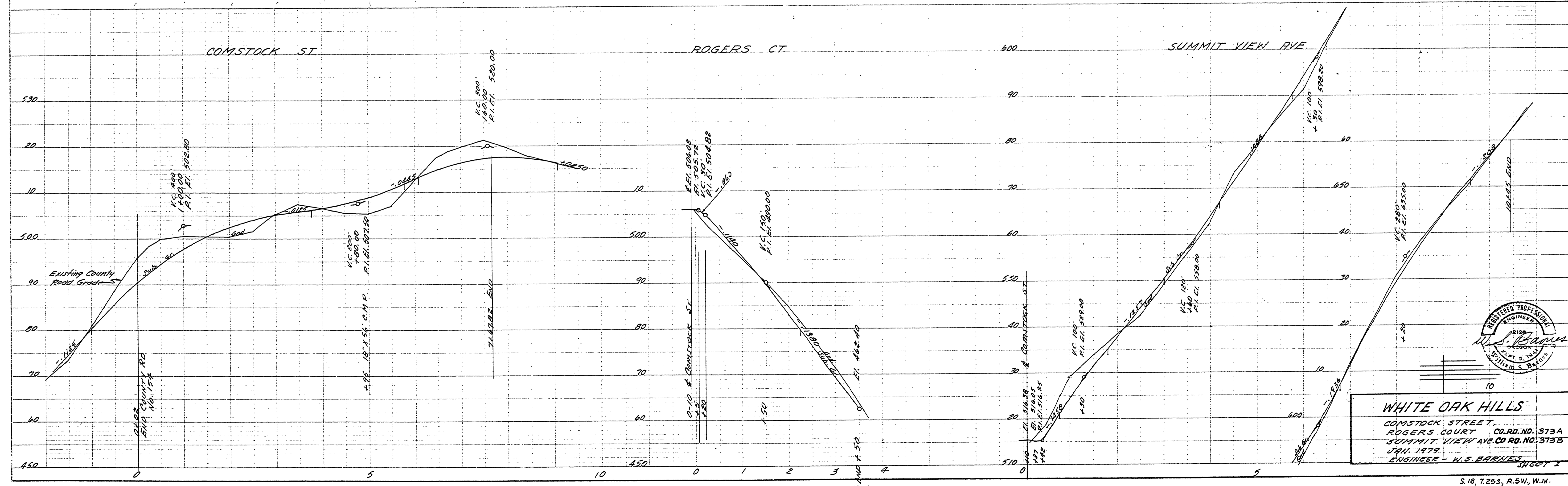
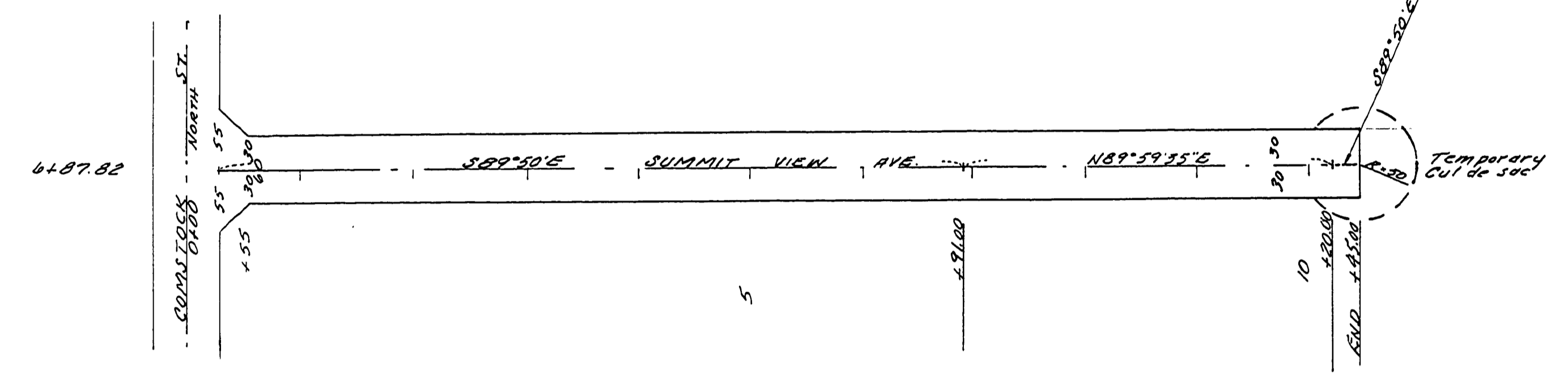
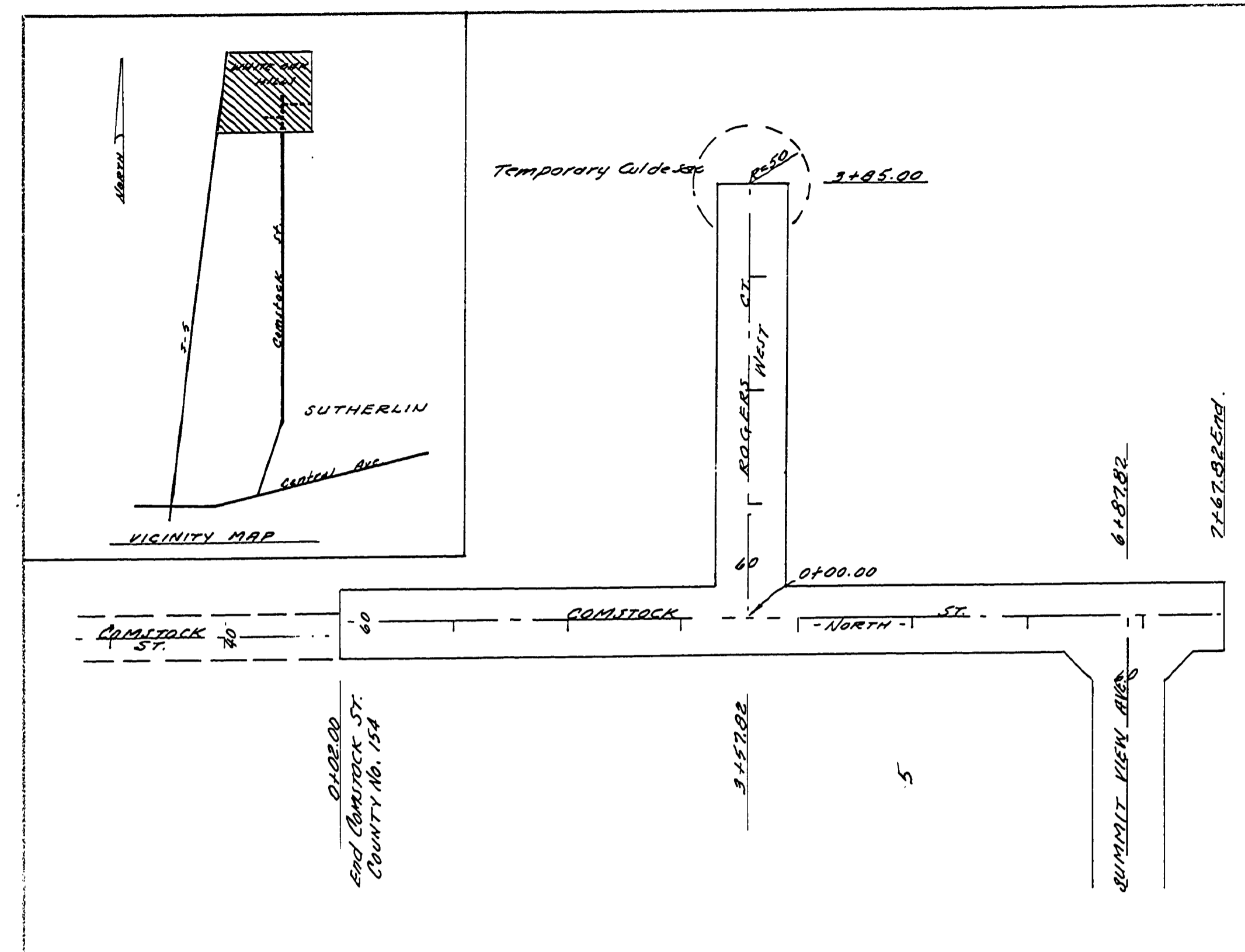
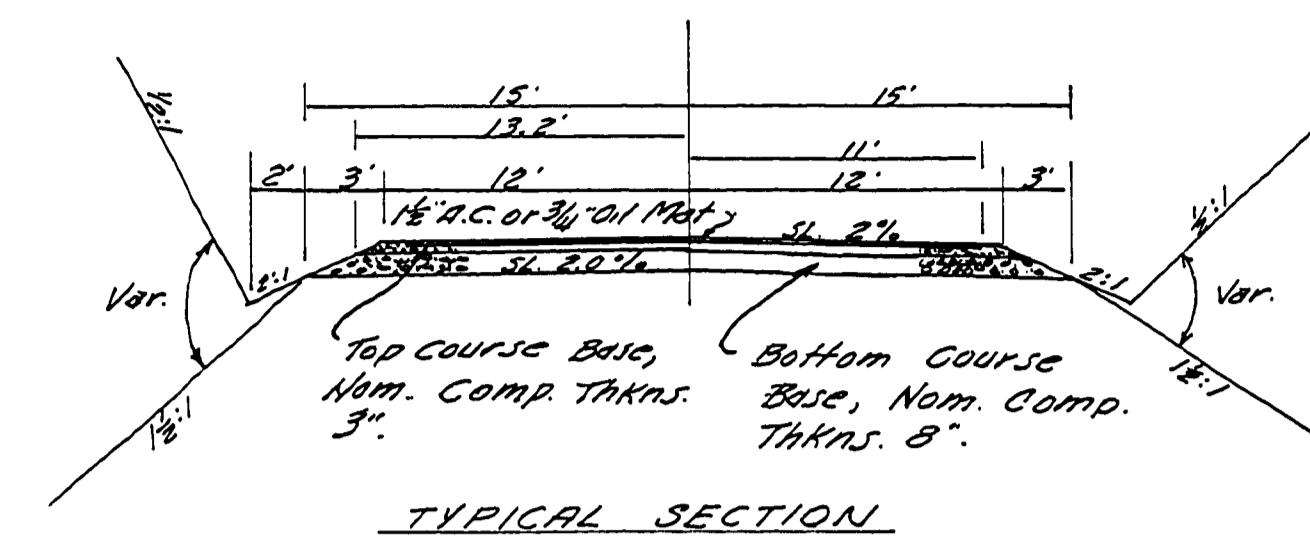


FILED

AUG 10 1987

COUNTY SURVEYOR
DOUGLAS COUNTY, ORE.

- Note:
1. All public works construction to comply with Douglas County Standard Specifications and Requirements.
 2. Contractor shall contact the Douglas County Public Works Dept. Subdivision Coordinator (425-1111, Ext. 401) prior to the start of the following phases of construction:
 - A. Immediately prior to start of construction.
 - B. Any time construction is stopped, then resumed.
 - C. At the completion of clearing and grubbing.
 - D. Immediately prior to placing base rock.
 - E. At the start of drainage and sewer work.
 - F. Immediately prior to placing asphalt concrete or oil mat.
 - G. After surfacing is completed.



WHITE OAK HILLS
COMSTOCK STREET,
ROGERS COURT CO. RD. NO. 373A
SUMMIT VIEW AVE CO. RD. NO. 373B
JAN. 1979
ENGINEER - W.S. BARNES

M.P. 0.00 - 0.07

M.P. 0.00 - 0.19

#373 A + B

177

0000019

MOLEBOOK

MOLEBOOK

FILED

19