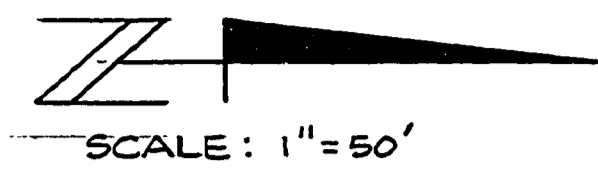
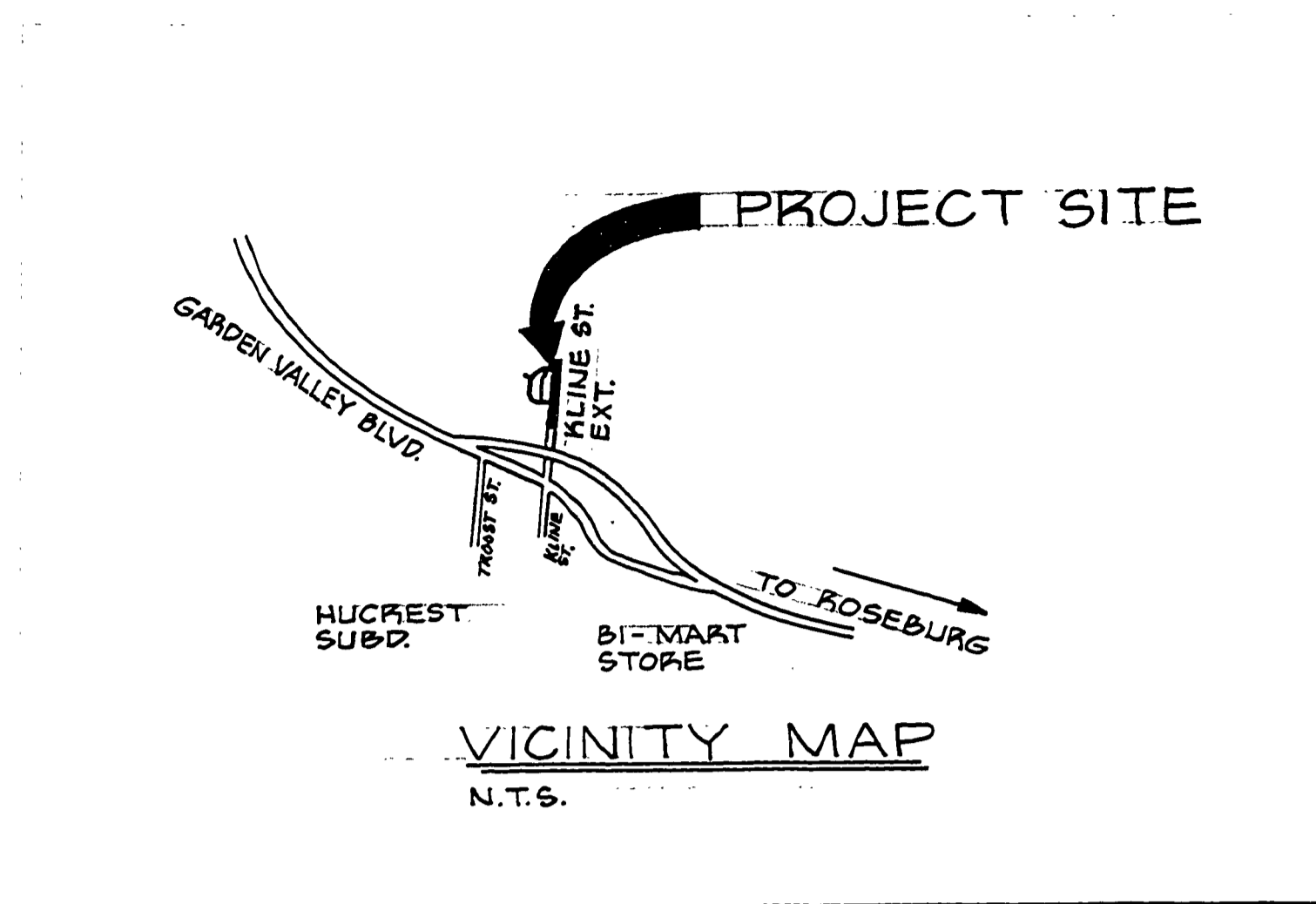


SECTION 11, T 27 S, R 6 W, W.M.



FILED
AUG 10 1987
COUNTY SURVEYOR
DOUGLAS COUNTY, ORE.

W 1/4, SEC. 11, T 27 S, R 6 W

CURVE DATA

Δ	= 41° 24' 00"
ΔD	= 57' 15"
R	= 100.08 FT.
L	= 37.82 FT.
L _c	= 12.31 FT.

CURVE DATA

Δ	= 17° 56' 44"
ΔD	= 10' 00"
R	= 572.96 FT.
L	= 90.41 FT.
L _c	= 179.46 FT.

CURVE DATA

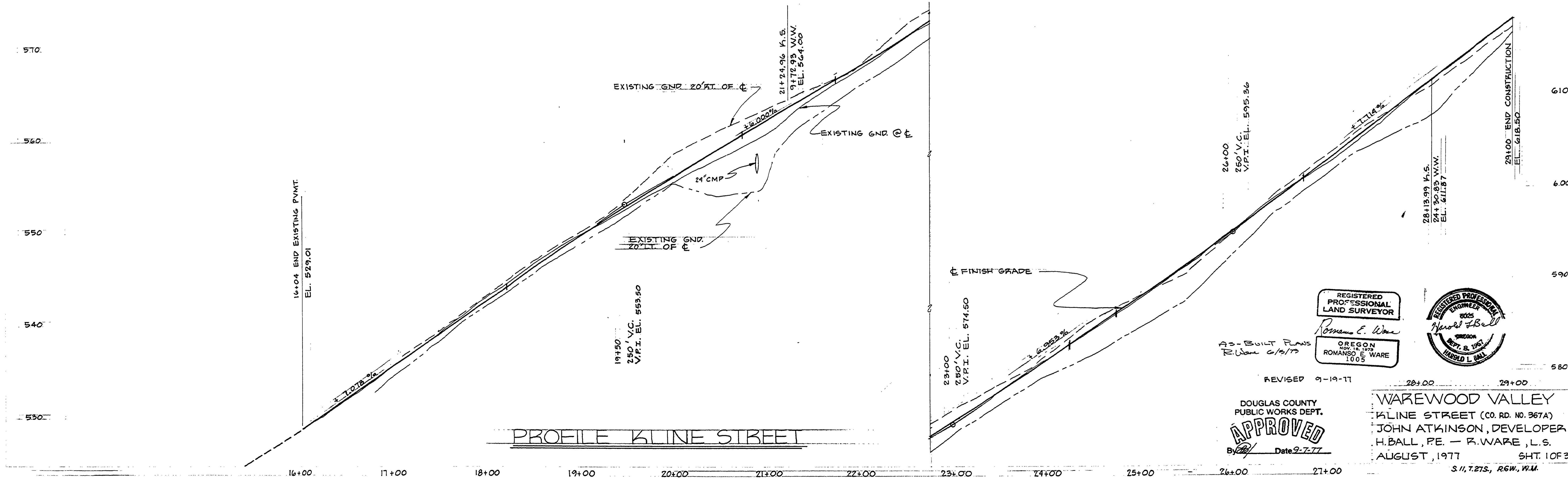
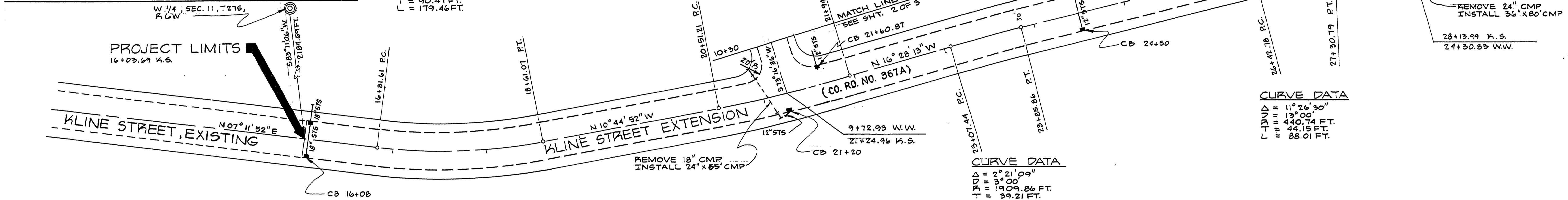
Δ	= 5° 43' 21"
ΔD	= 4' 00"
R	= 1432.40 FT.
L	= 71.59 FT.
L _c	= 143.06 FT.

CURVE DATA

Δ	= 11° 26' 30"
ΔD	= 13' 00"
R	= 440.74 FT.
L	= 1909.86 FT.
L _c	= 39.21 FT.
L _e	= 88.01 FT.

CURVE DATA

Δ	= 2° 21' 09"
ΔD	= 3' 00"
R	= 1909.86 FT.
L	= 39.21 FT.
L _c	= 18.42 FT.



REGISTERED PROFESSIONAL LAND SURVEYOR
ROMANSO E. WARE
OREGON 1973
ROMANSO E. WARE 1005

REGISTERED PROFESSIONAL ENGINEER
HAROLD L. BALL
OREGON 1973
HAROLD L. BALL

REVISOR 9-19-77

DOUGLAS COUNTY PUBLIC WORKS DEPT.
APPROVED
By: [Signature] Date: 9-7-77

WAREWOOD VALLEY
KLINE STREET (CO. RD. NO. 367A)
JOHN ATKINSON, DEVELOPER
H. BALL, P.E. - R. WARE, L.S.
AUGUST, 1977