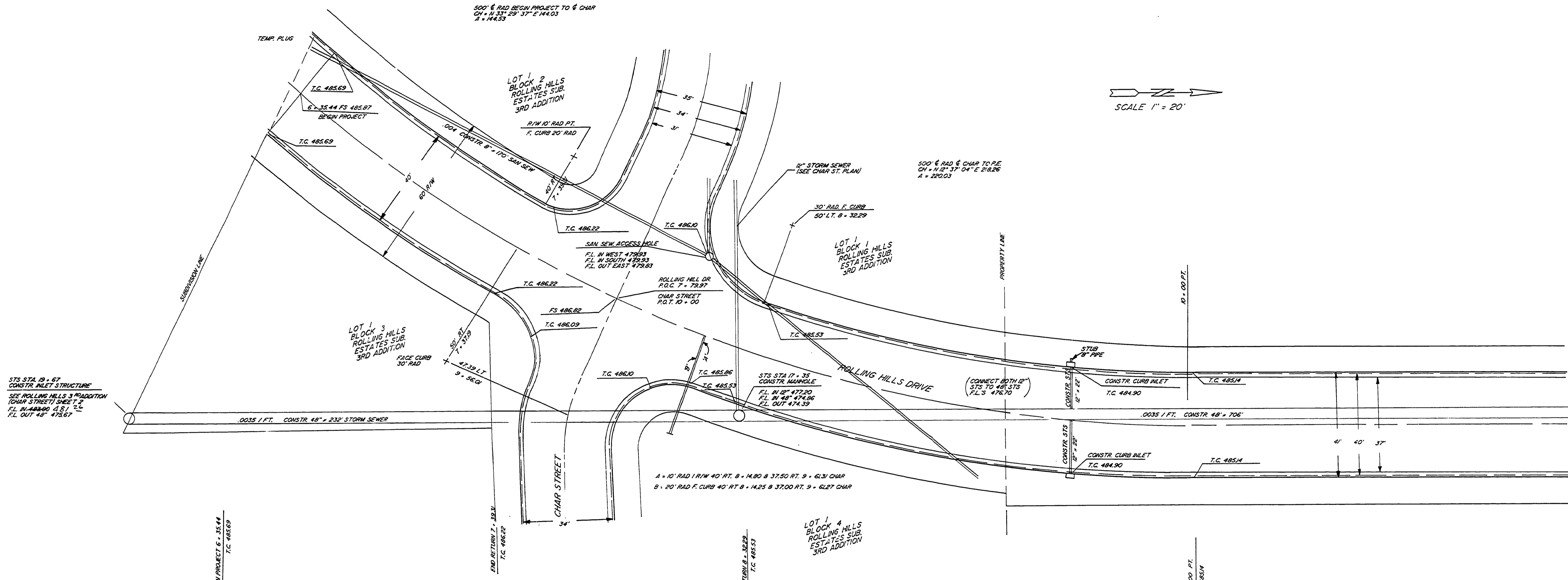


ROLLING HILLS DRIVE

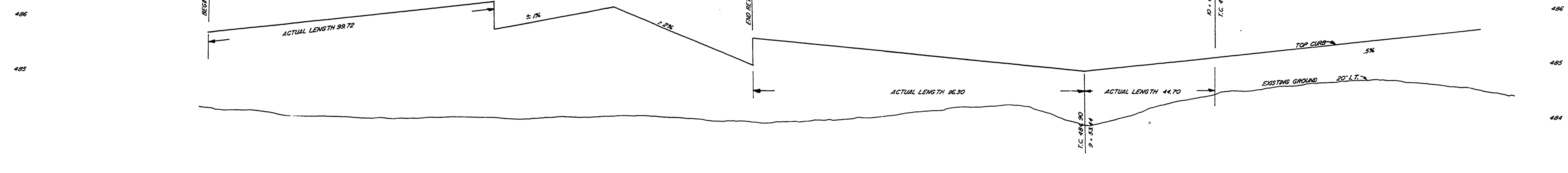
FILED  
 Date: 7-16-97 By: JP  
 This survey consists of:  
 Map:  
 Narrative:  
 Corner Rpt:  
 DOUGLAS COUNTY  
 SURVEYOR

SCALE 1" = 20'



STS STA 19 + 67  
 CONSTR INLET STRUCTURE  
 SEE ROLLING HILLS 3 ADDITION  
 (CHAR STREET) SHEET 2  
 F.L. IN 48860 (8.1) T.C.  
 F.L. OUT 487567

A = 10' RAD. R/W 40' RT. B = 14.80 B 37.50 RT. 9 = 61.31 CHAR  
 B = 20' RAD. F. CURB 40' RT. B = 14.25 B 37.00 RT. 9 = 61.27 CHAR

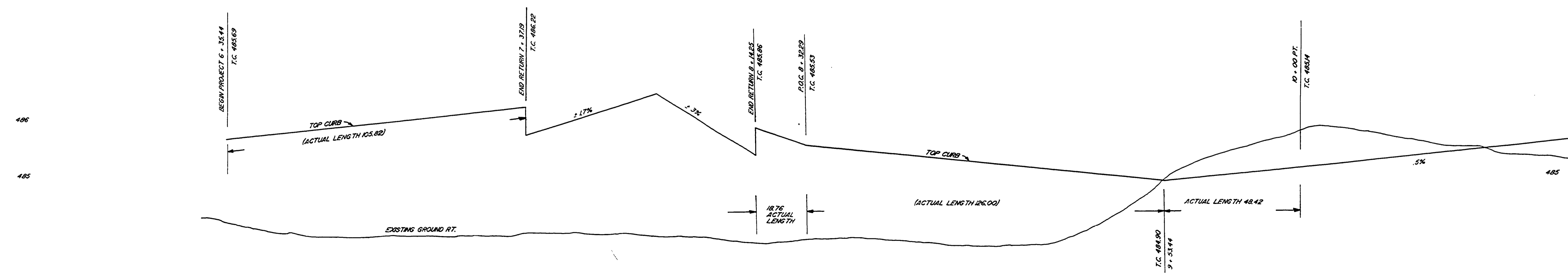


SCALE: HORIZ. 1" = 20'  
 VERT. 1" = 4'

STORM SEWER PROFILE  
 NOT PLOTTED - SEE PLAN ABOVE



- NOTES
- 1) TYPICAL SECTION SHOWN ON CHAR STREET PLAN.
  - 2) ALL PIPE MANHOLES, CURB INLETS TO CONFORM TO DOUGLAS COUNTY STANDARD SPECIFICATIONS (CURB INLETS - 29)
  - 3) CONTRACTOR TO LOCATE ALL EXISTING UTILITIES PRIOR TO CONSTRUCTION (ONE-CALL 673-6676).



DATE:	JULY 1997	DONALD A. BENTZ INC. P.O. BOX 901 WINCHESTER, OR 97495
DRAWN BY:	CB	
DESIGN BY:	D.B. & R.S.	ROLLING HILLS DRIVE CHAR STREET TO AUSTIN RD.
REV:		
		SHEET 1 OF 2

RD366001