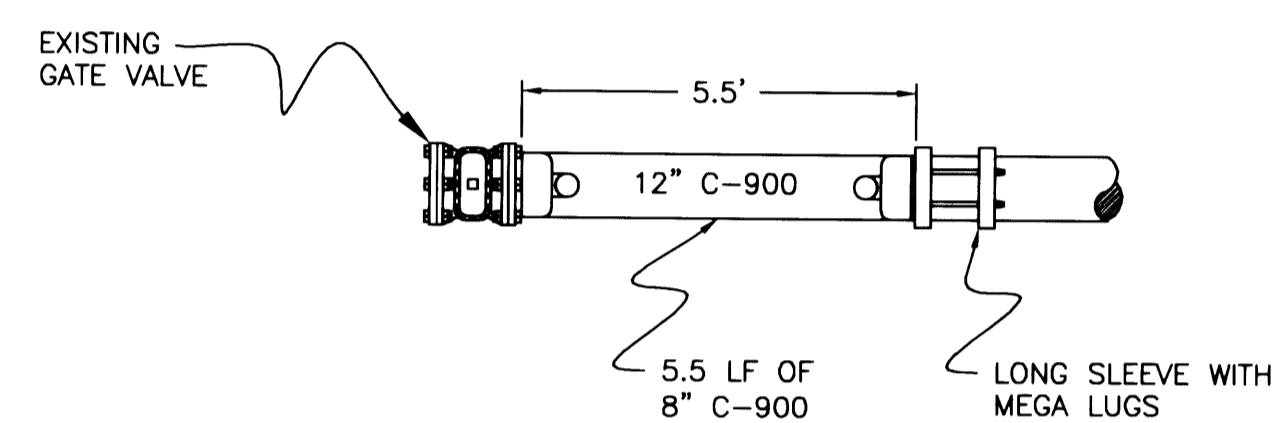
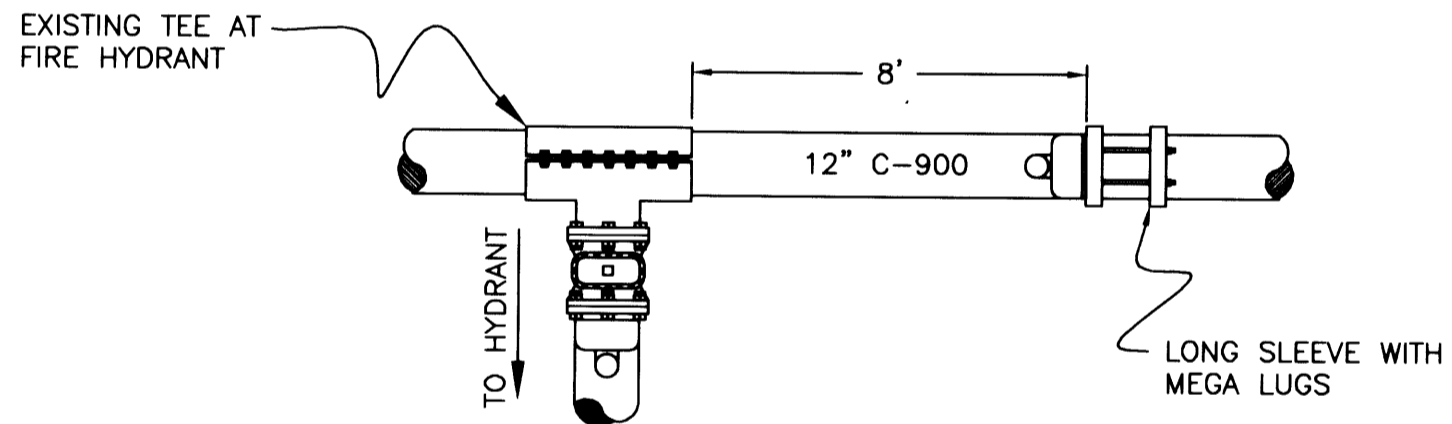


NOTES:
 ALL PIPE AND FITTINGS FOR TIE-IN TO BE CLEAN AND WIPED w/CHLORINE PRIOR TO INSTALLATION
 CONTRACTOR TO ALIGN NEW MAINLINE IN BOTH ALIGNMENT AND GRADE w/EXISTING 8" WATERLINE. CONNECTION TO EXISTING WATERLINE CAN ONLY BE MADE AFTER INSTALLATION. TESTING & DISINFECTION OF NEW WATERLINE HAS BEEN COMPLETED.

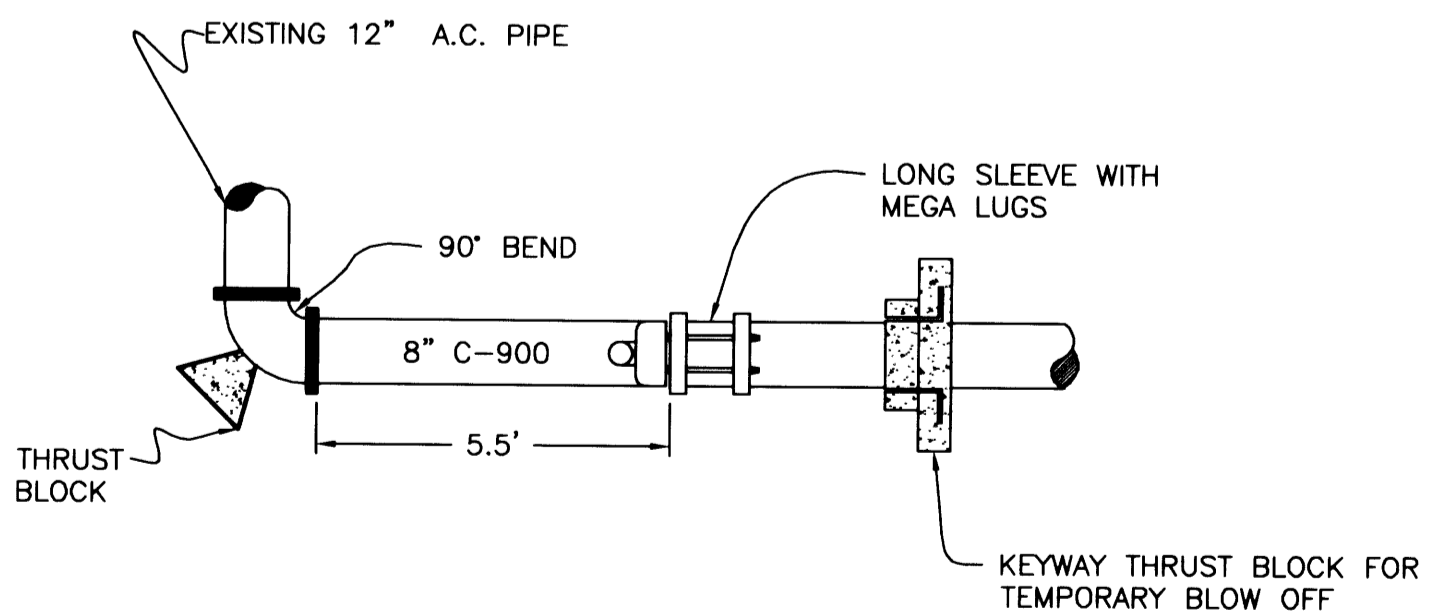
WATER TIE-IN DETAIL AT CAMERON AVENUE



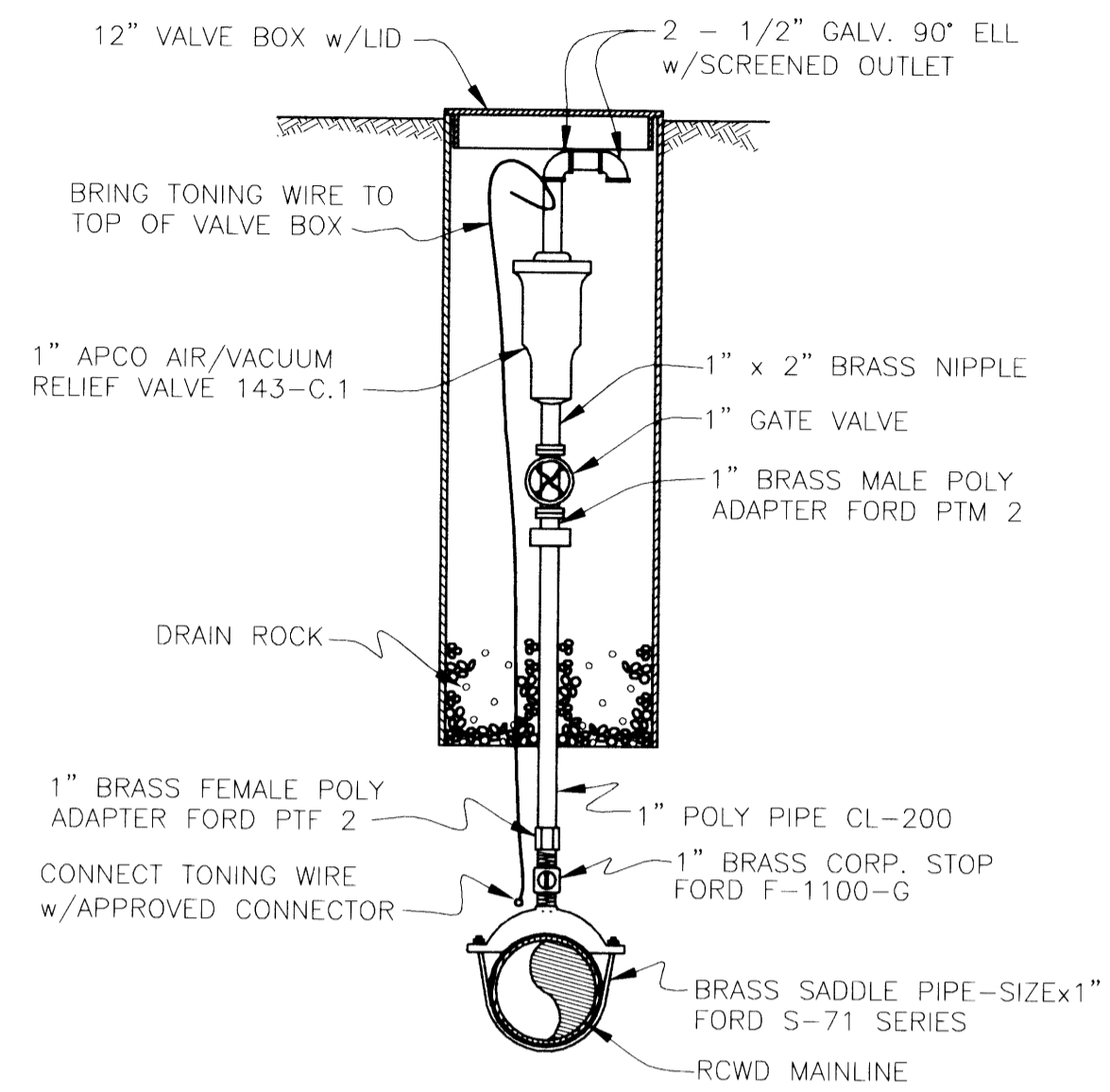
WATER TIE-IN AT CALLAHAN DETAIL



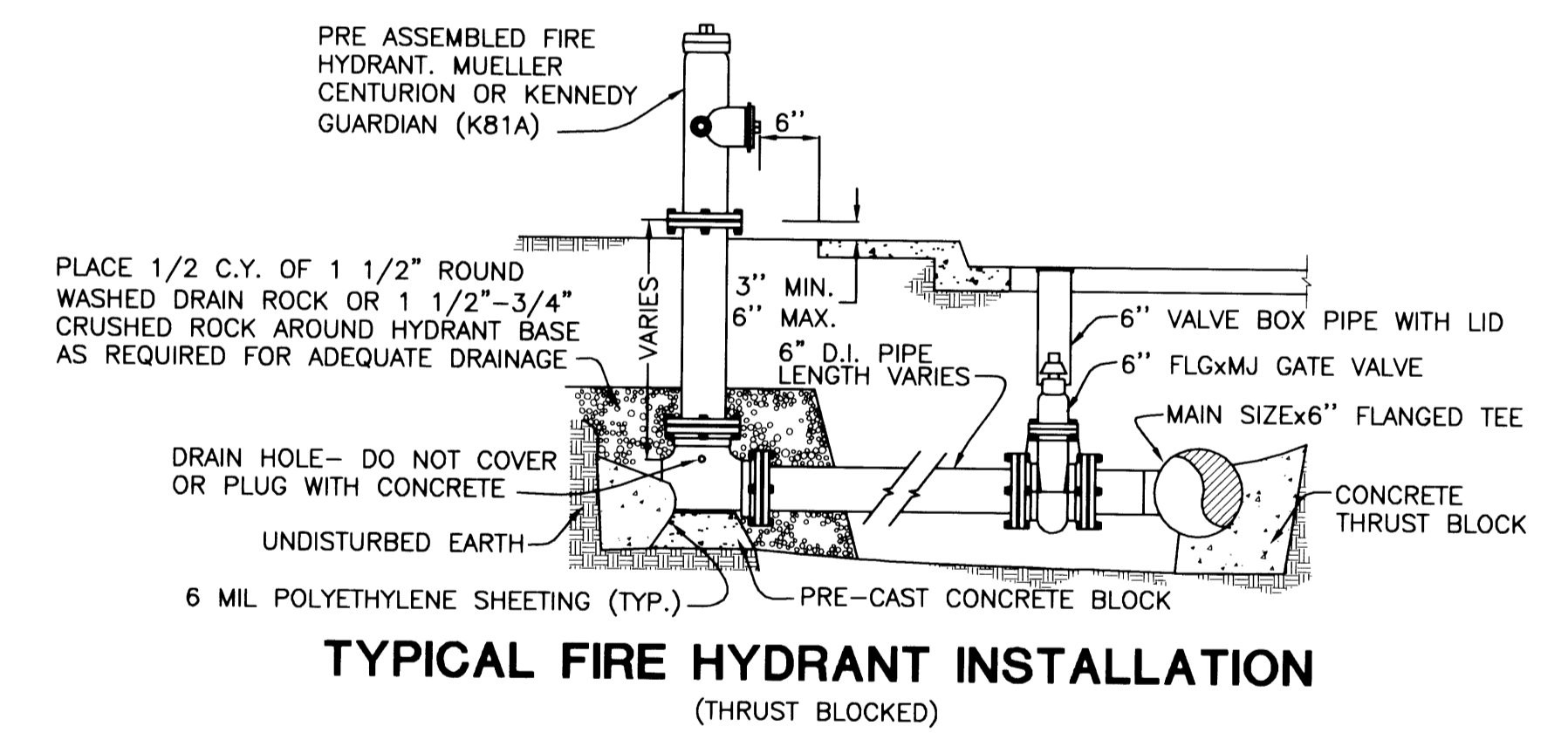
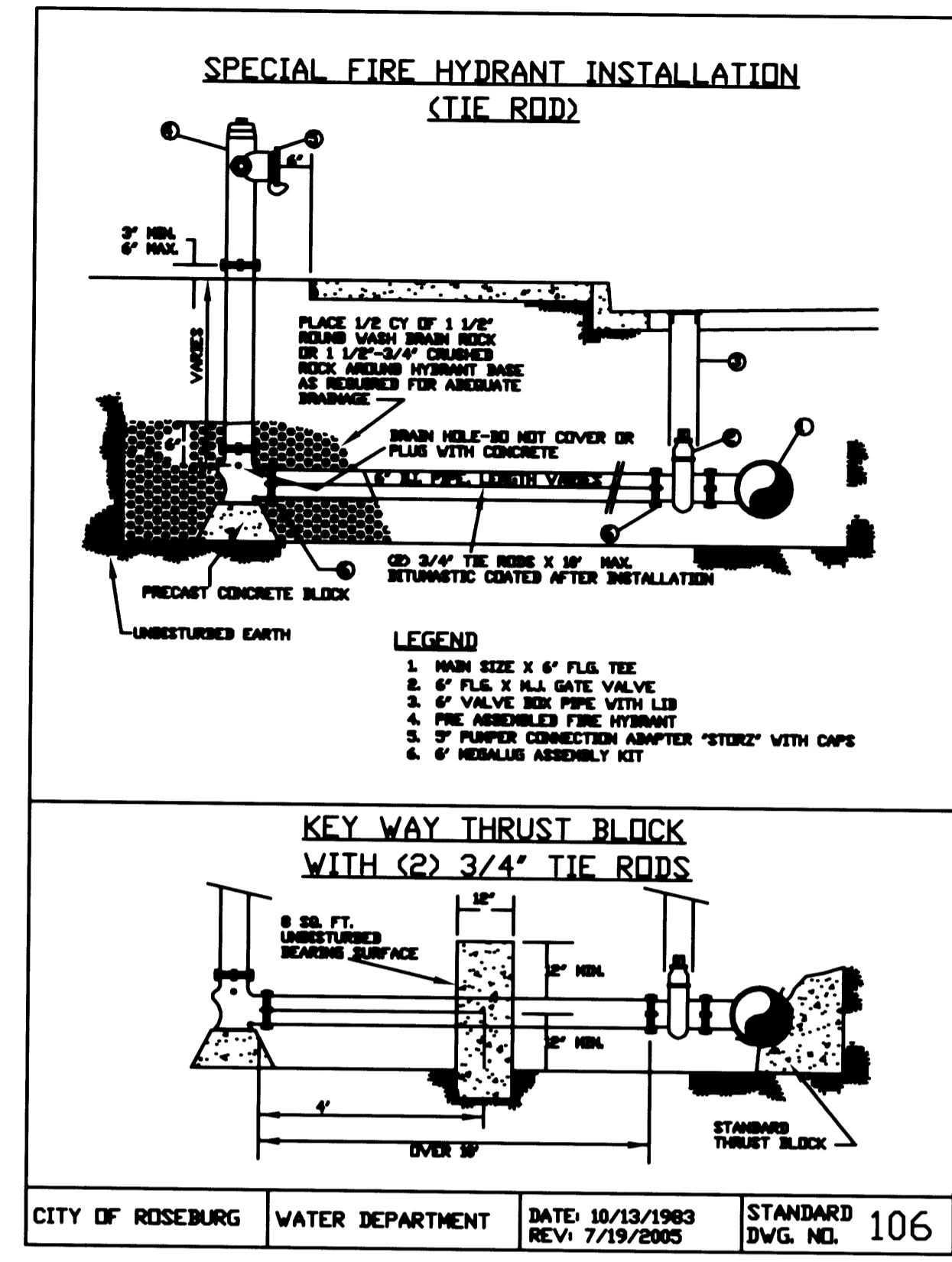
WATER TIE-IN AT NORTH END ROLLING HILLS ROAD DETAIL



WATER TIE-IN AT SOUTH END ROLLING HILLS ROAD DETAIL



TYPICAL AIR RELIEF DETAIL



CALL BEFORE YOU DIG 1
 ONE CALL: (800) 332-2344
 OAR 952-001-0010 THROUGH
 OAR 952-001-0090

i.e.
 ENGINEERING
 505 SE Main Street
 Roseburg, Oregon 97470
 PHONE (541) 673-0166
 FAX (541) 440-9392
 iemail@ieengineering.com

Rev.	Date	Dwg	Description	RIVER CREST ESTATES 2 PHASE 1	
1	7/1/05	JDL	AGENCY REVIEW	Title:	
2	4/13/06	JDL	AS-BUILT PHASE 1A	DETAILS	
3	8/9/06	NRJ	AS-BUILT PHASE 1B	DES DMA	PROJECT NO. 1944-0312T5
				DWG JDL	DATE: MAY 20, 2005
				CHK SNL	SCALE: AS SHOWN
				APP SNL	SHEET: 16 OF 18

Co. Rd. # 366, 375J, 375N, 375O, 288B, 288C, 288D

**DETAIL SHEET CO. RDS. 366 375J
 375N 375O 288B 288C 288D**

DO NOT DUPLICATE

375288D3