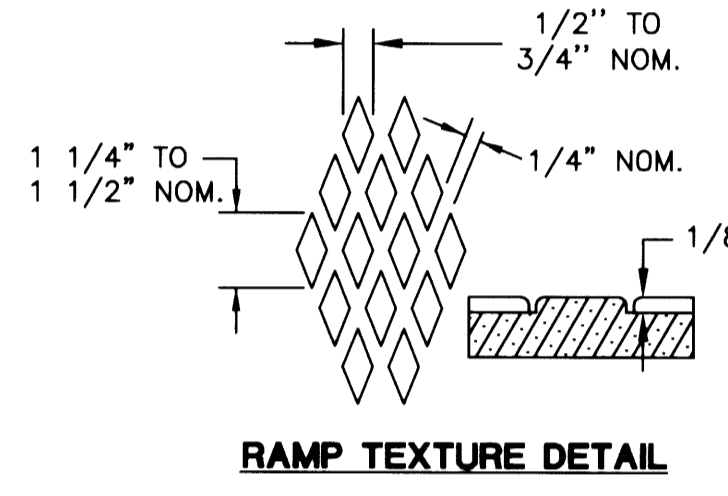


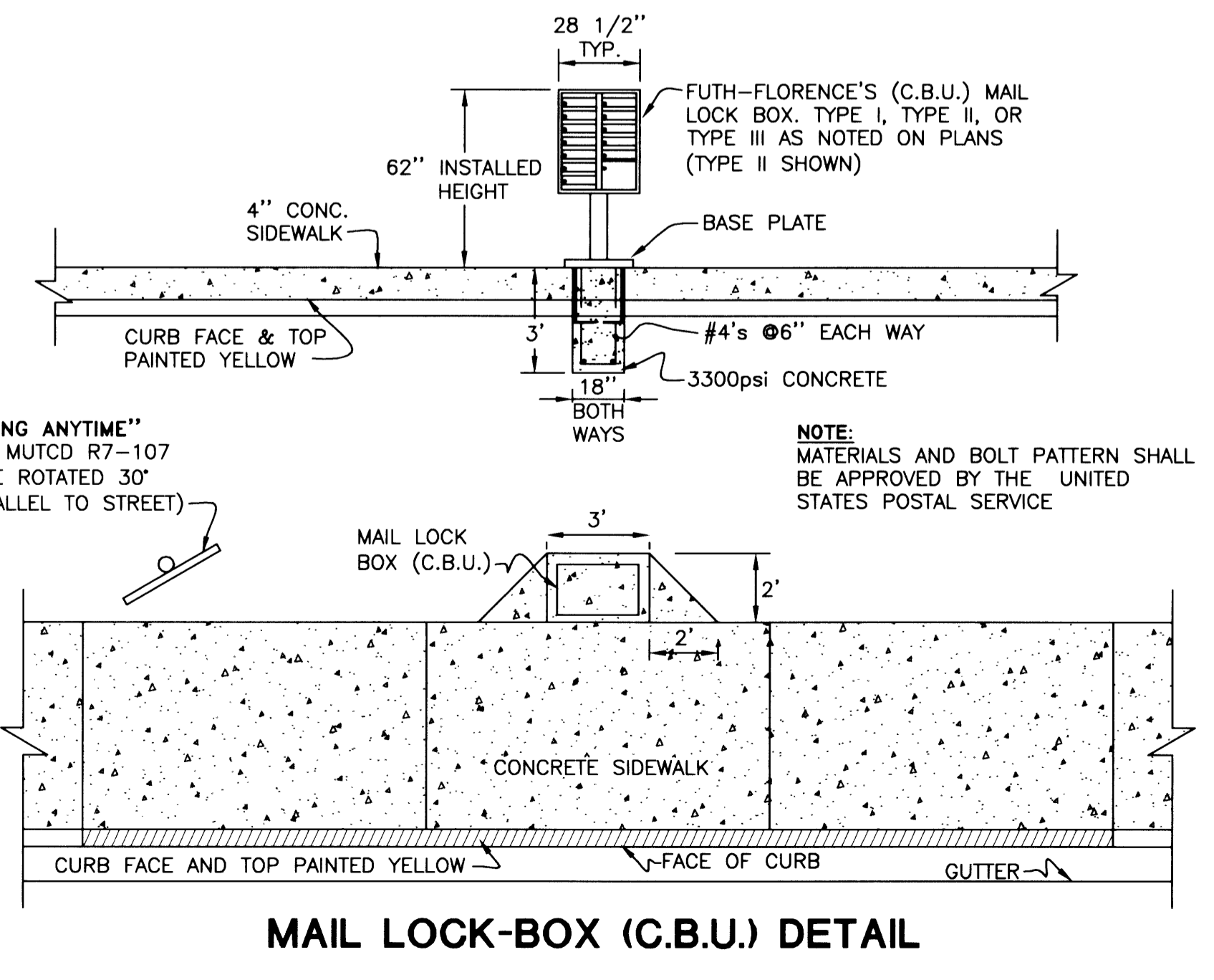
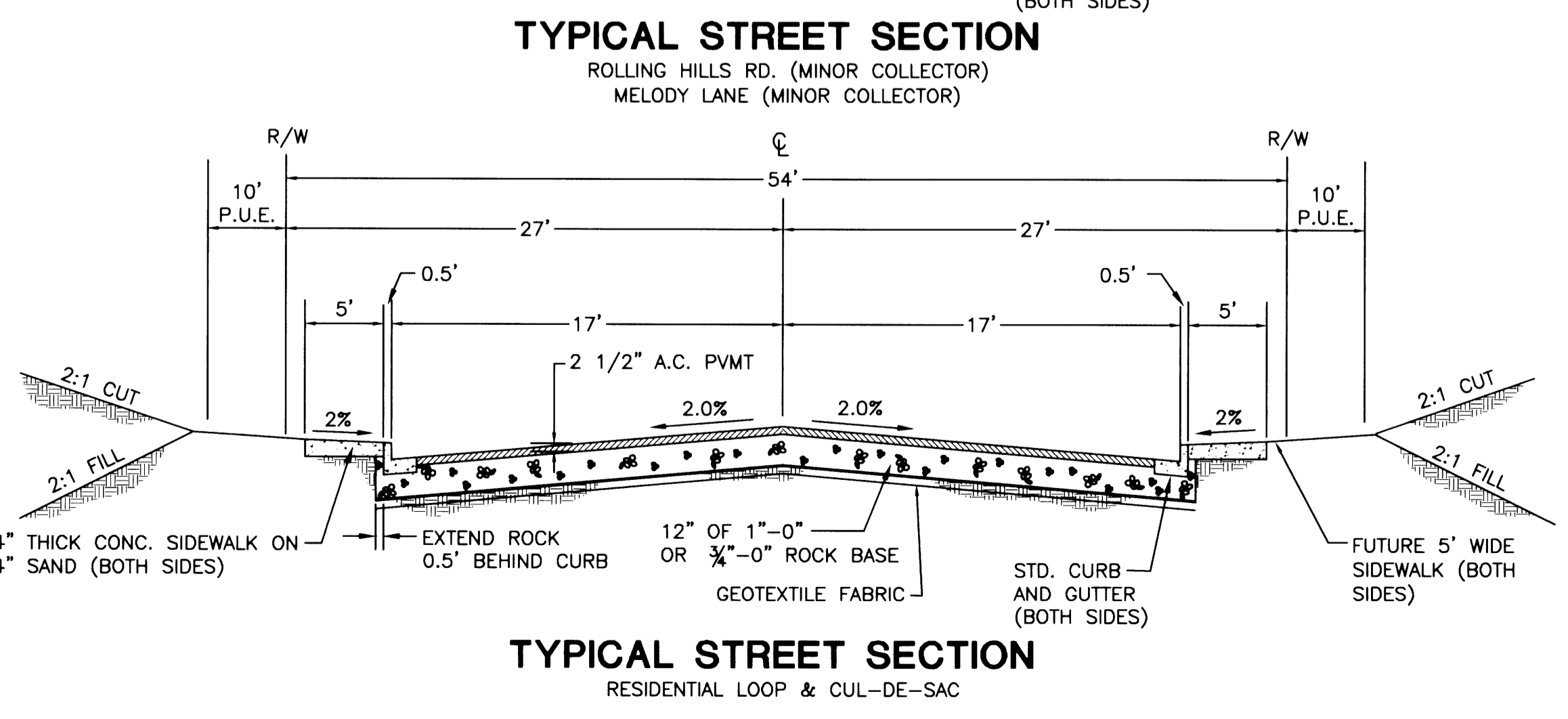
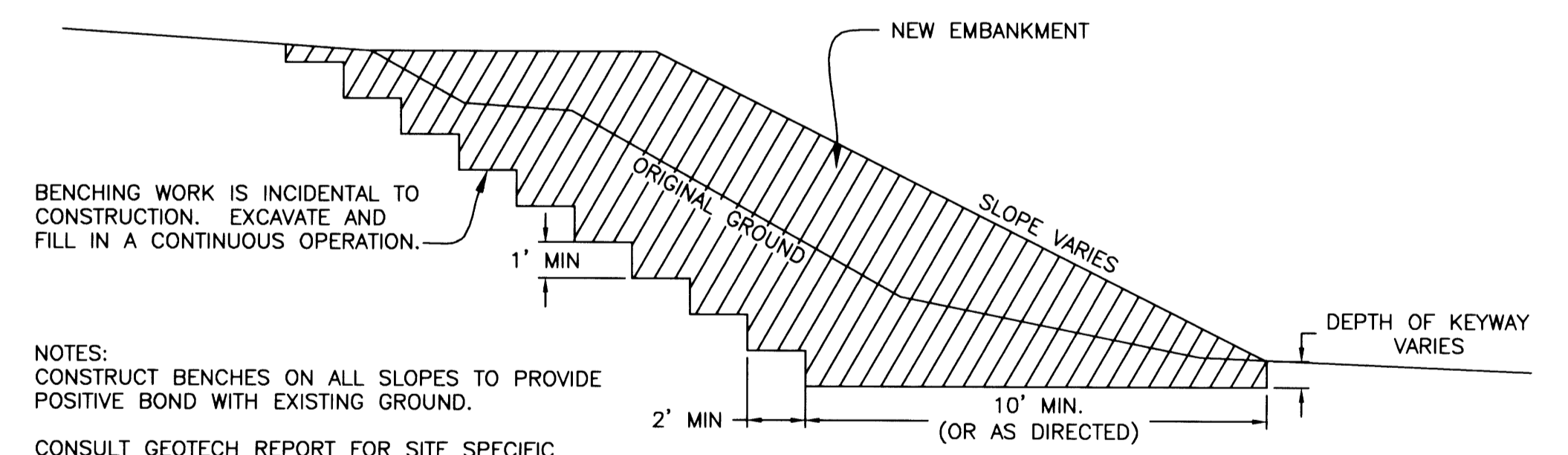
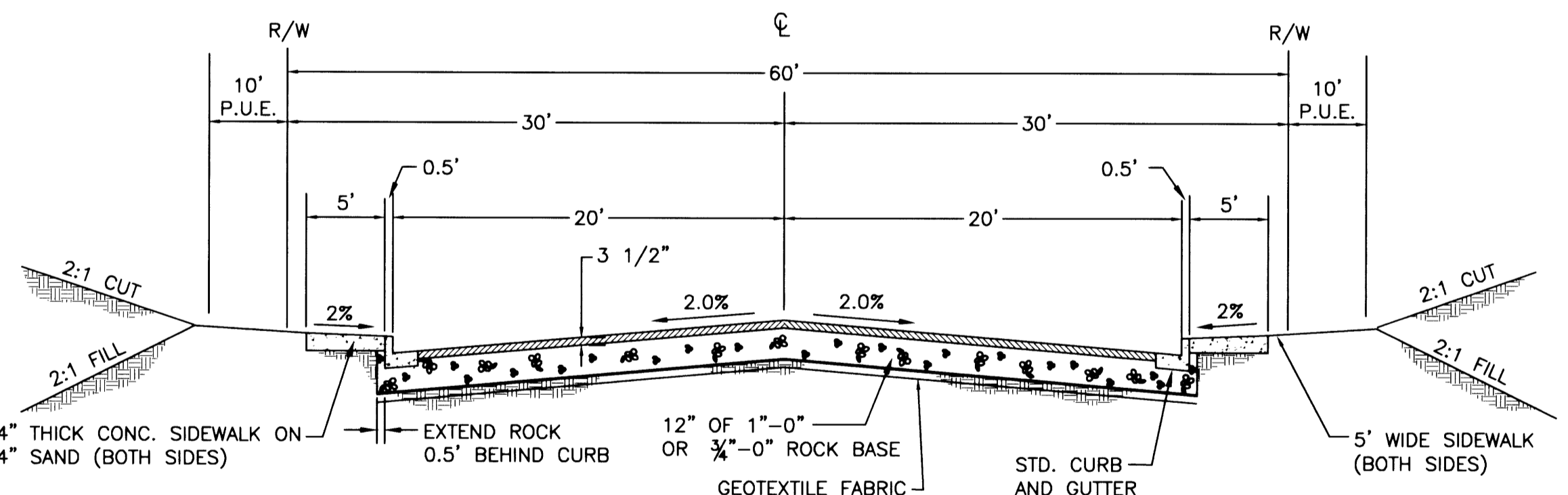
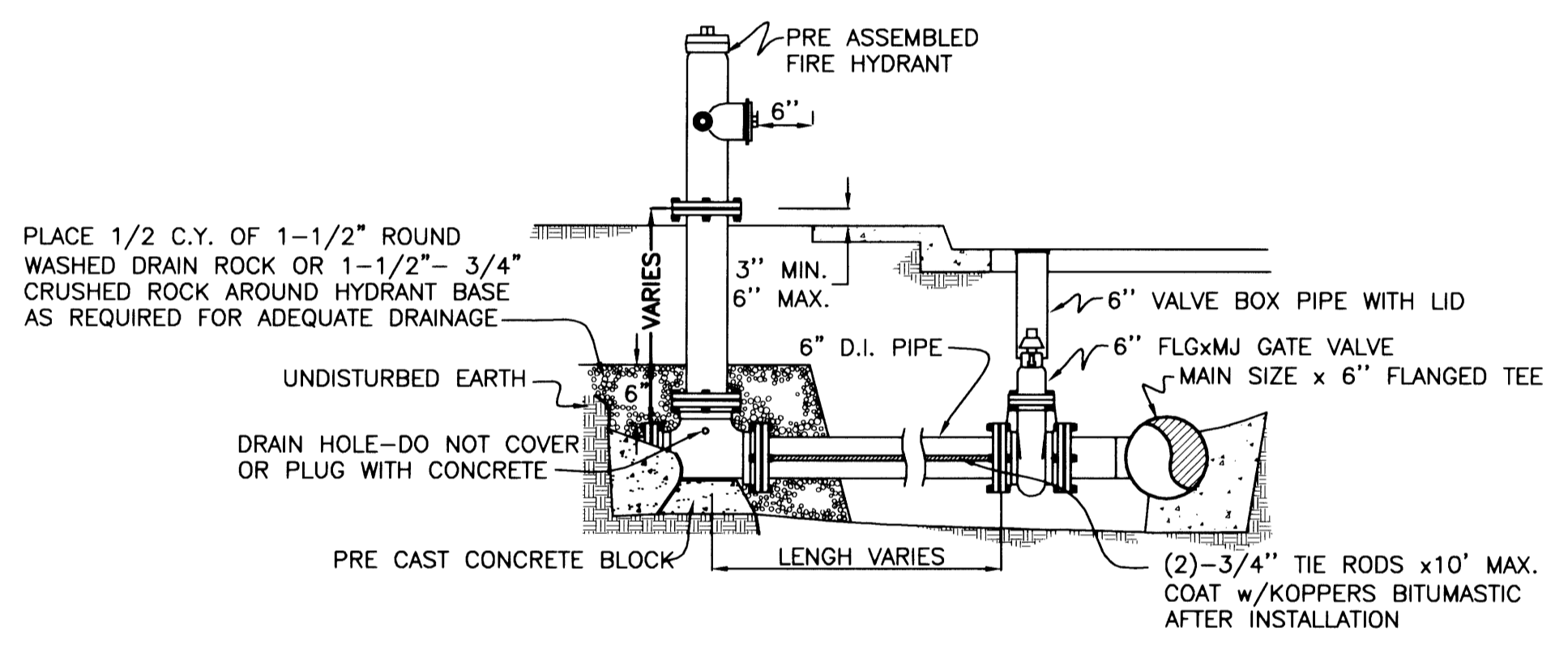
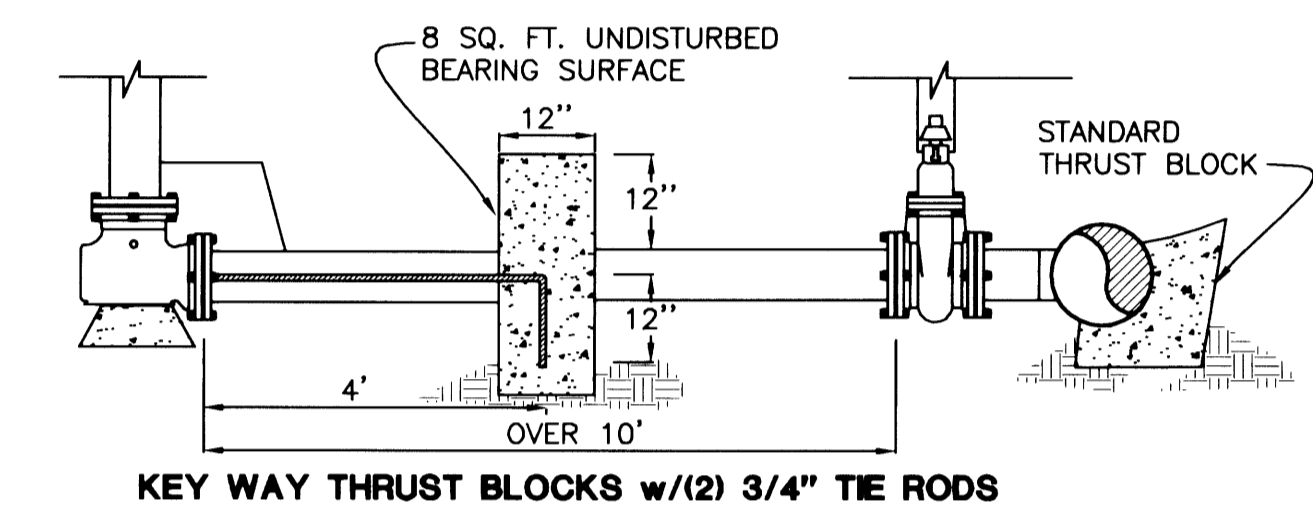
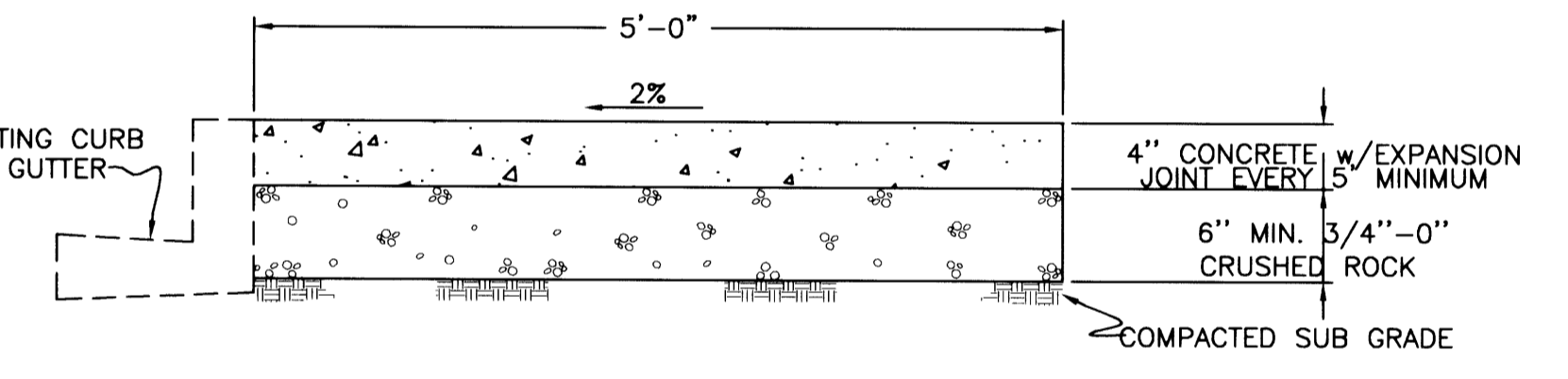
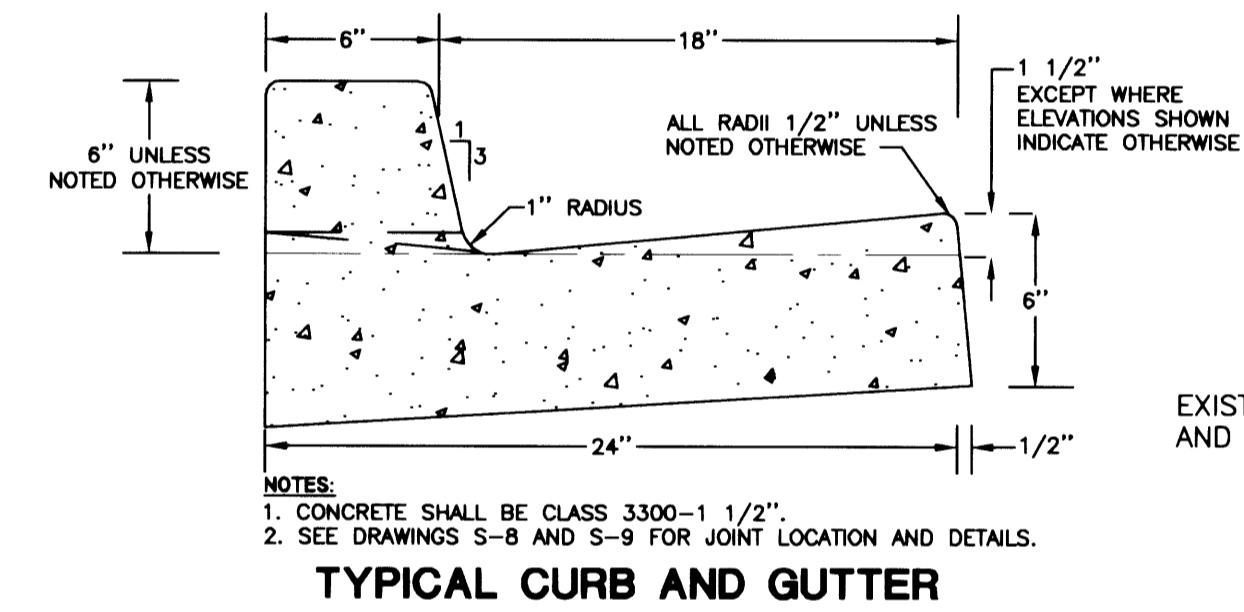
- NOTES:**
1. THE "AMERICANS WITH DISABILITIES ACT" (ADA) REQUIRES THAT ACCESS RAMPS TO SIDEWALKS CONFORM TO ALL FEDERAL GUIDELINES. EXCEPTIONS TO THE REQUIREMENTS IN THIS DRAWING MUST BE APPROVED BY PUBLIC WORKS DIRECTOR AND MUST COMPLY WITH ADA.
  2. LANDINGS SHALL BE PLACED AT THE TOP OF EACH RAMP. LANDING SLOPES SHALL NOT EXCEED 50:1 IN ANY DIRECTION.
  3. MINIMUM LANDING DIMENSIONS SHALL BE 4' x 4'.
  4. RAMP SURFACE SHALL BE TEXTURED WITH RAISED DIAMOND TEXTURE. TEXTURING SHALL BE DONE WITH AN EXPANDED METAL GRATE STAMPED INTO THE CONCRETE.
  5. CONCRETE STRENGTH SHALL BE 3300 PSI.



**SIDEWALK ACCESS RAMP**  
 ADA STANDARD-SINGLE MID-BLOCK RAMP

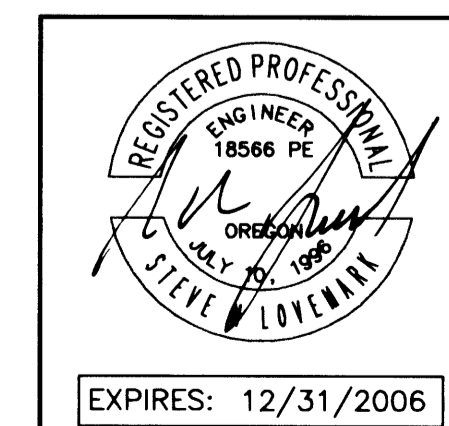
- NOTES:**
1. RESIDENTIAL DRIVEWAYS AND SIDEWALK SECTIONS THROUGH DRIVEWAYS SHALL HAVE A MINIMUM NOMINAL THICKNESS OF 6".
  2. CONCRETE STRENGTH SHALL BE 3300 PSI. CONCRETE FOR COMMERCIAL USE AND ALLEY APPROACHES SHALL HAVE A MINIMUM NOMINAL THICKNESS OF 8".
  3. CONCRETE STRENGTH SHALL BE 3300 PSI. CURB TRANSITIONS FOR COMMERCIAL USE AND ALLEY APPROACHES SHALL BE 5 FEET.
  4. CONSTRUCT CONTRACTION JOINT IN CENTER OF DRIVEWAY WHEN DRIVEWAY WIDTH EXCEEDS 15'. NO LIP AT GUTTER IF USED AS SIDEWALK ACCESS RAMP.
  5. SEE SIDEWALK DETAILS FOR RESTRICTIONS AND SPECIFICATIONS NOT SHOWN.
  6. THE 50:1 CROSS-SLOPE OF SIDEWALK IS MEASURED FROM HORIZONTAL. THE 12:1 SLOPE OF SIDEWALK TRANSITION TO DRIVEWAY/ALLEY IS RELATIVE TO THE RUNNING SLOPE OF THE SIDEWALK. THE SLOPE OF THE APRON IS MEASURED RELATIVE TO HORIZONTAL.

**DRIVEWAY APPROACH**



"NO PARKING ANYTIME" SIGN, PER MUTCD R7-107 (SIGN FACE ROTATED 30° FROM PARALLEL TO STREET)

CALL BEFORE YOU DIG I  
 ONE CALL (800) 332-2344  
 OAR 952-001-0010 THROUGH  
 OAR 952-001-0090



Rev.	Date	Dwg	Description
1	7/1/05	JDL	AGENCY REVIEW
2	4/13/06	JDL	AS-BUILT PHASE 1A
3	8/9/06	NRJ	AS-BUILT PHASE 1B

**i.e. ENGINEERING**  
 505 SE Main Street  
 Roseburg, Oregon 97470  
 PHONE (541) 673-0166  
 FAX (541) 440-9392  
 jemail@ieengineering.com  
 Project Name: RIVER CREST ESTATES 2 PHASE 1  
 Title: DETAILS  
 DES DMA PROJECT NO. 1944-0312T5  
 DWG JDL DATE: MAY 20, 2005  
 CHK SNL SCALE: AS SHOWN  
 APP SNL SHEET: 15 OF 18