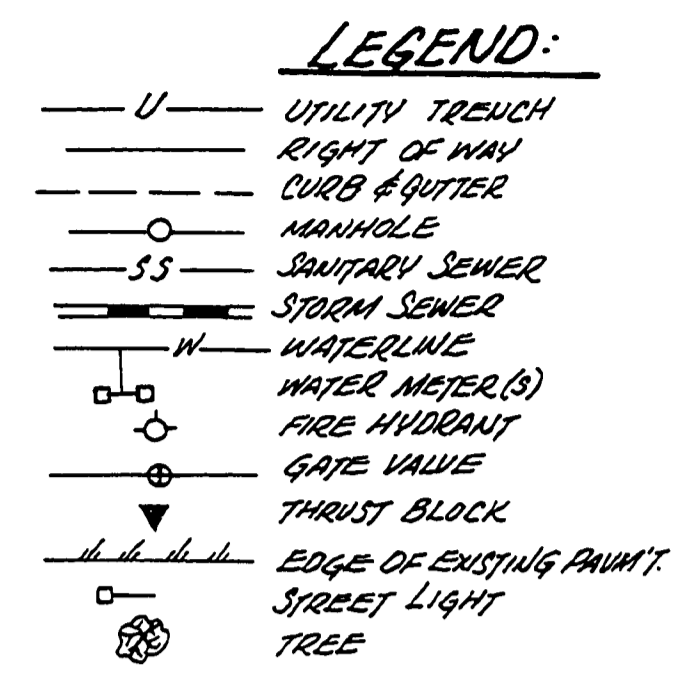
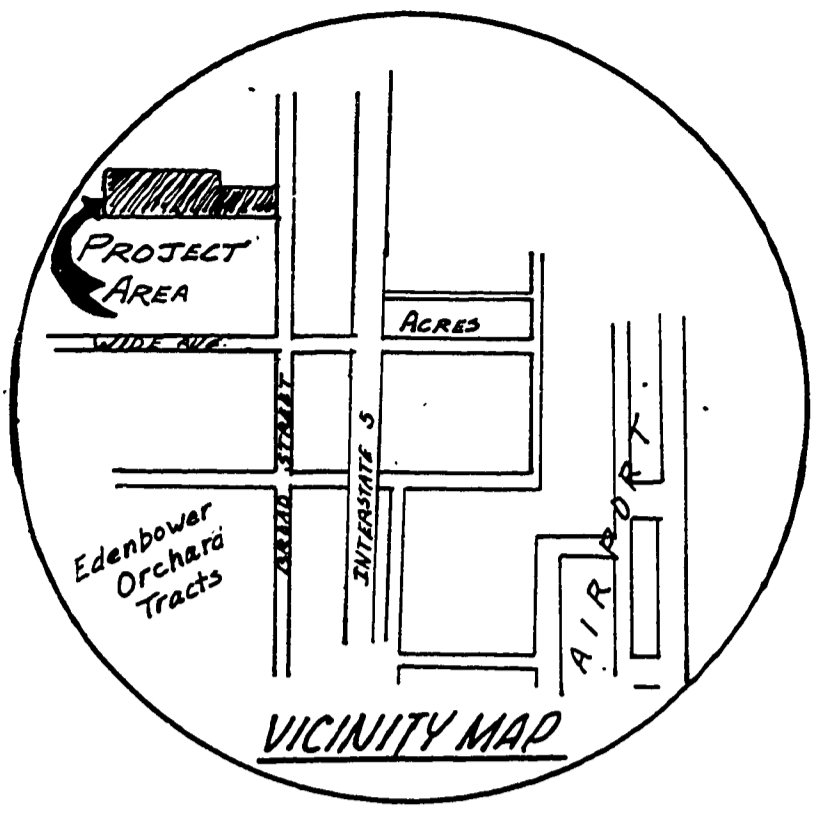
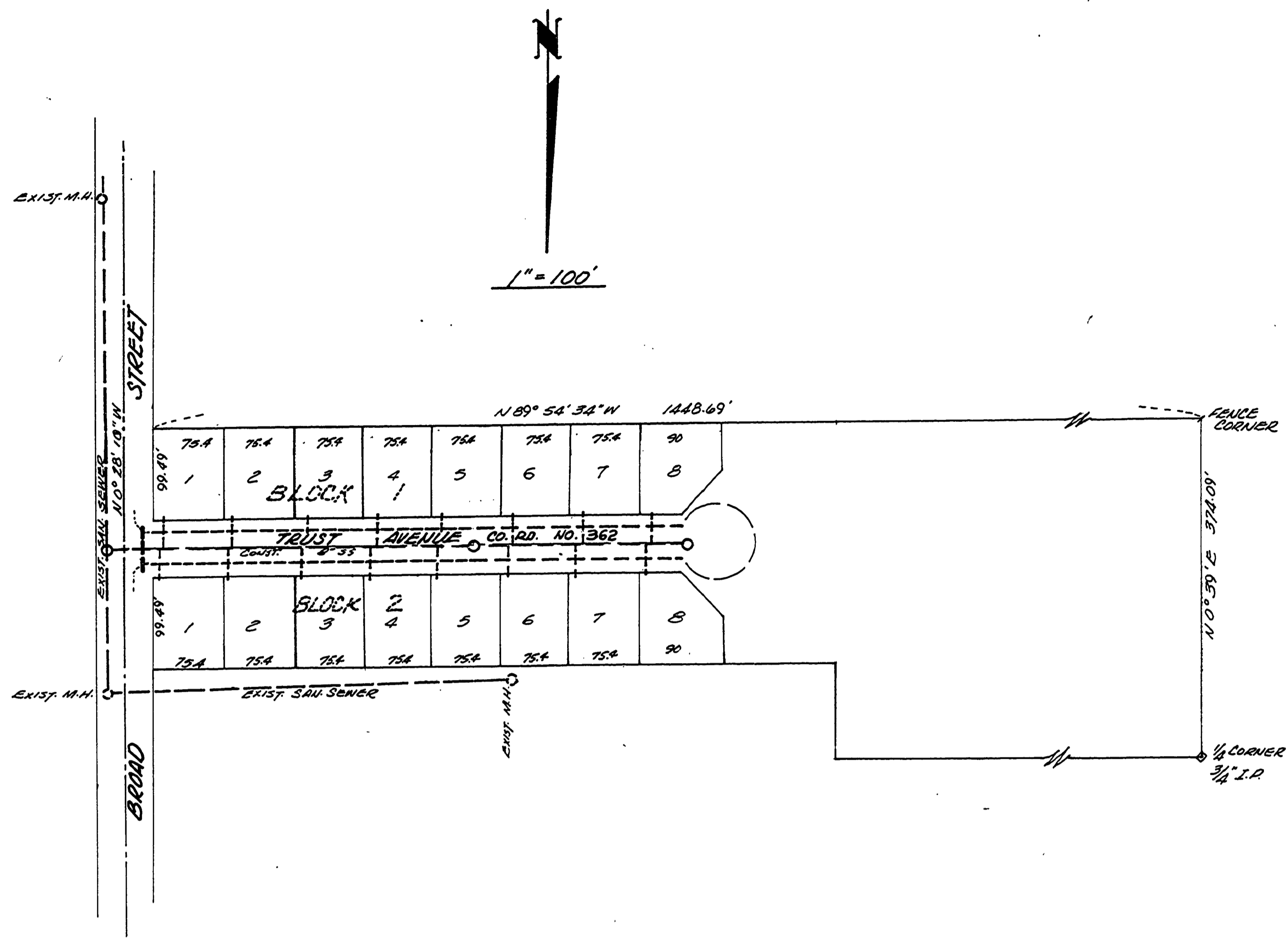


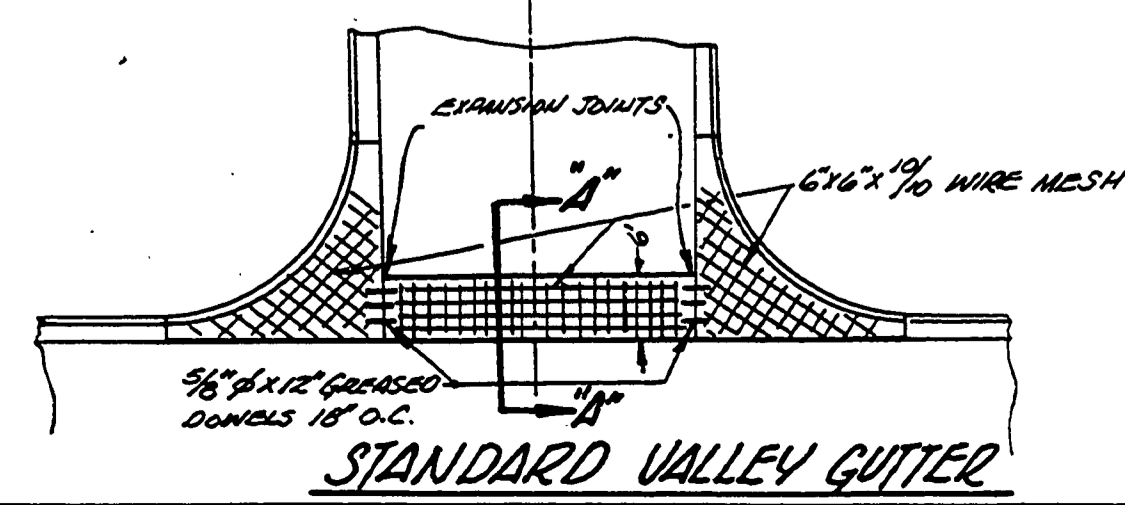
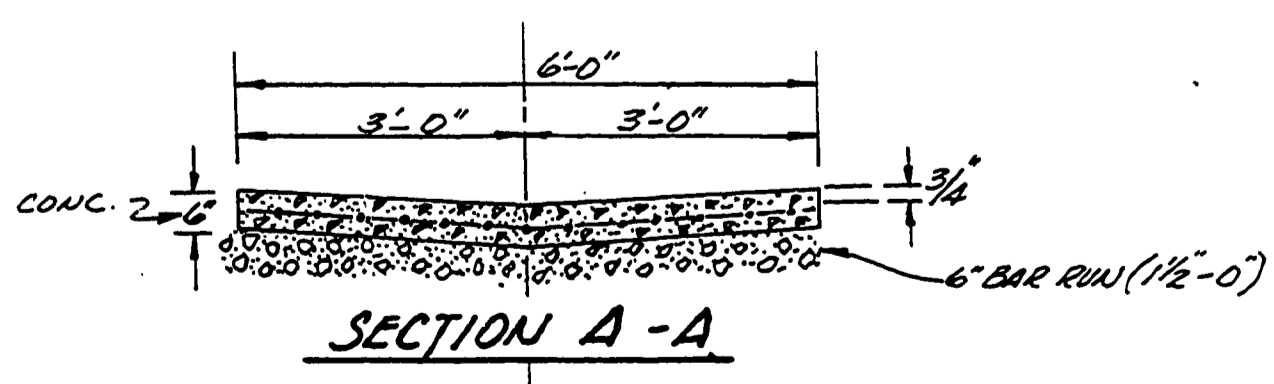
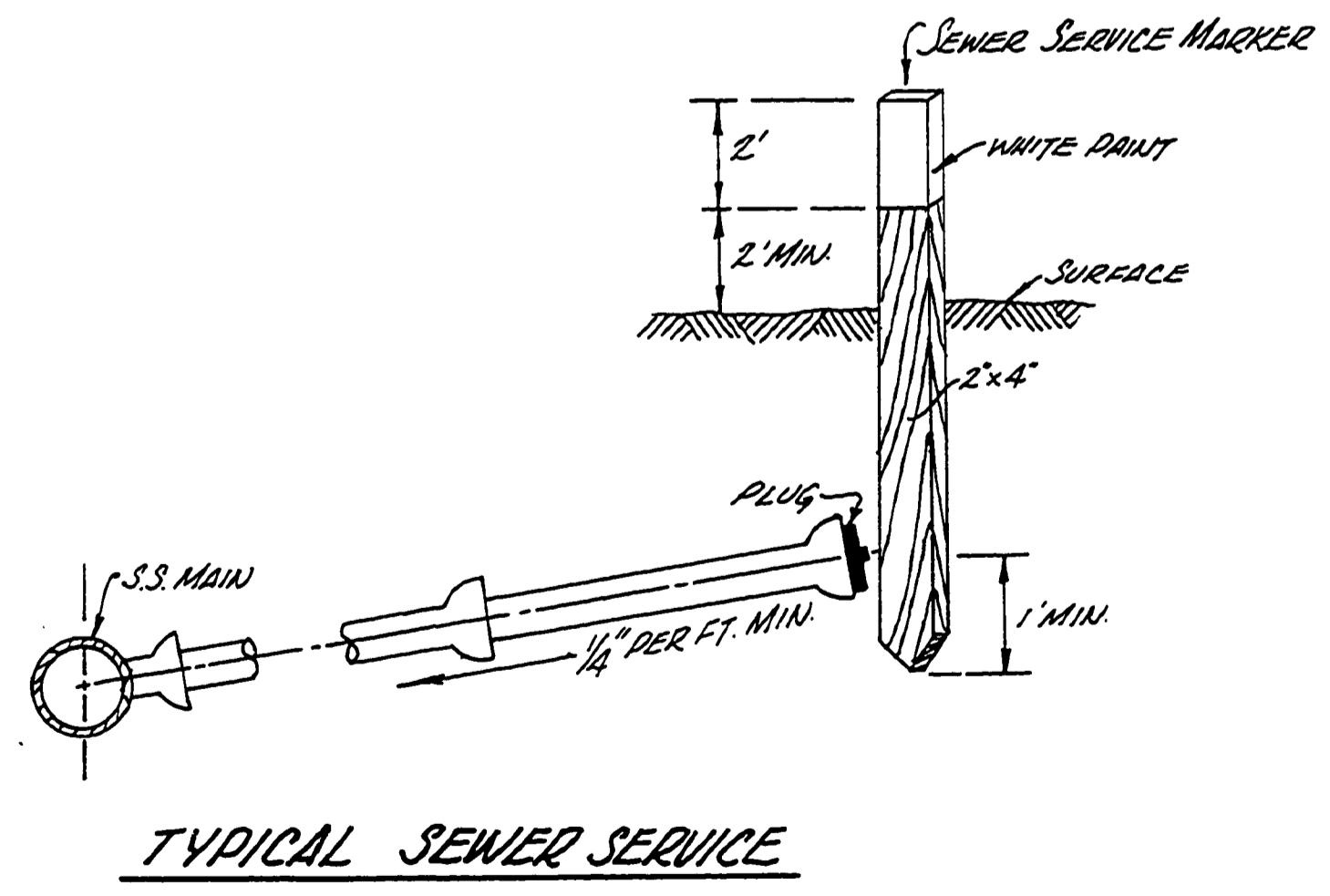
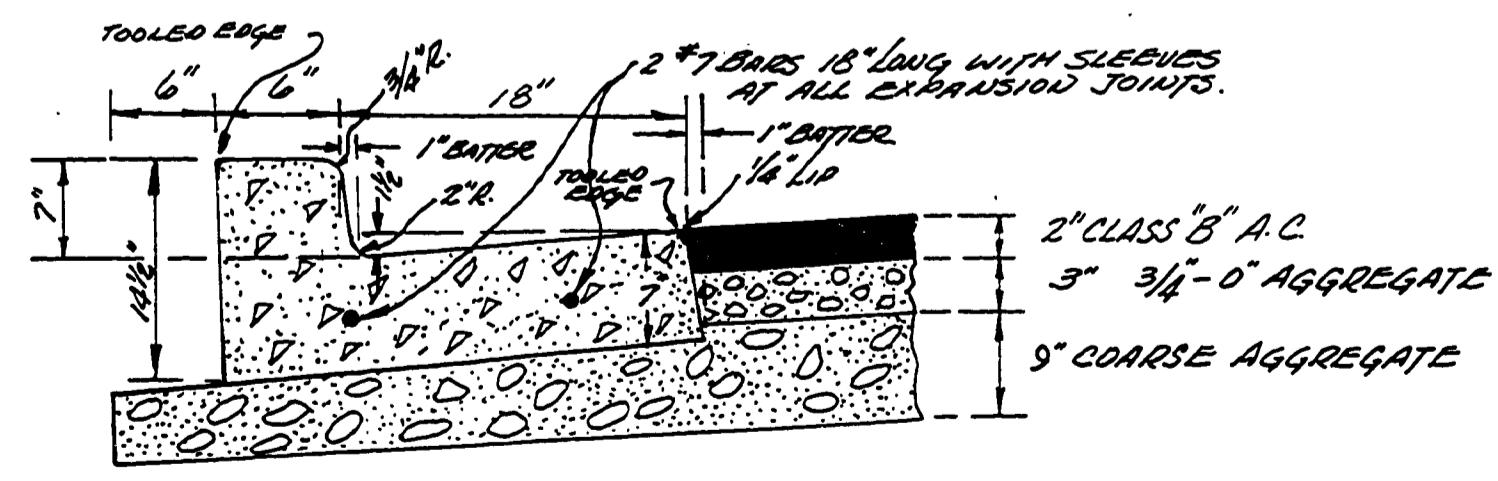
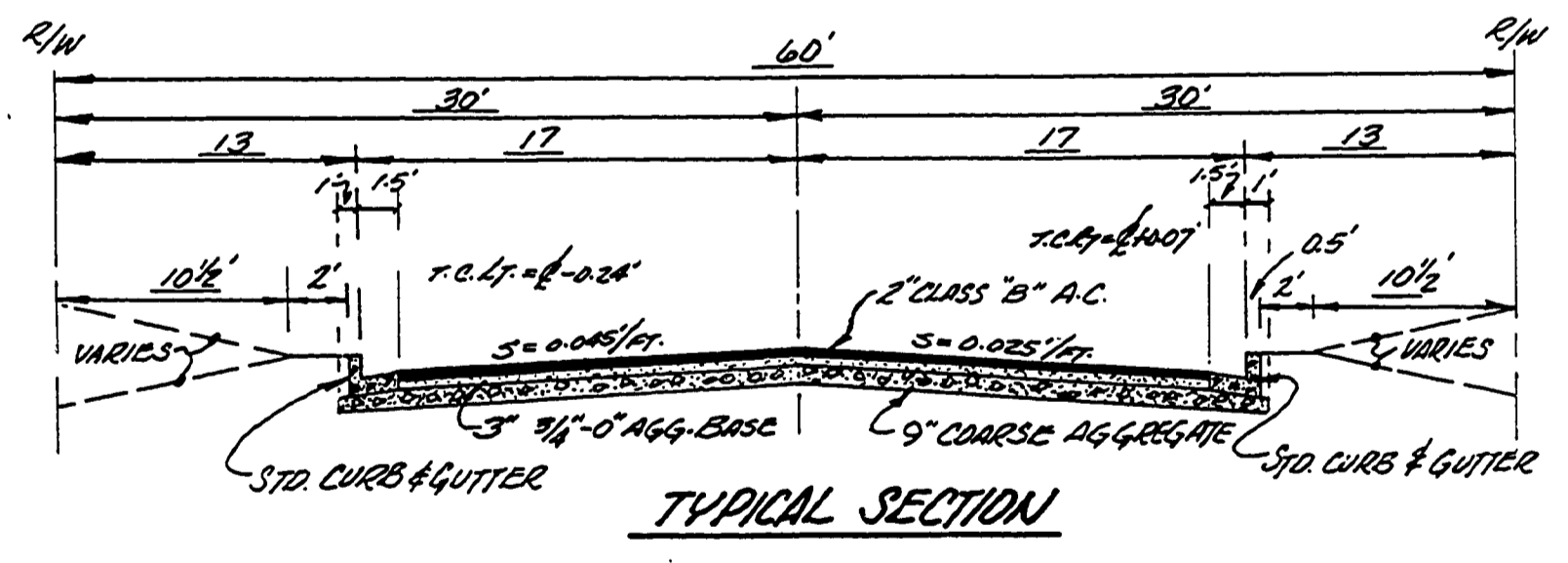
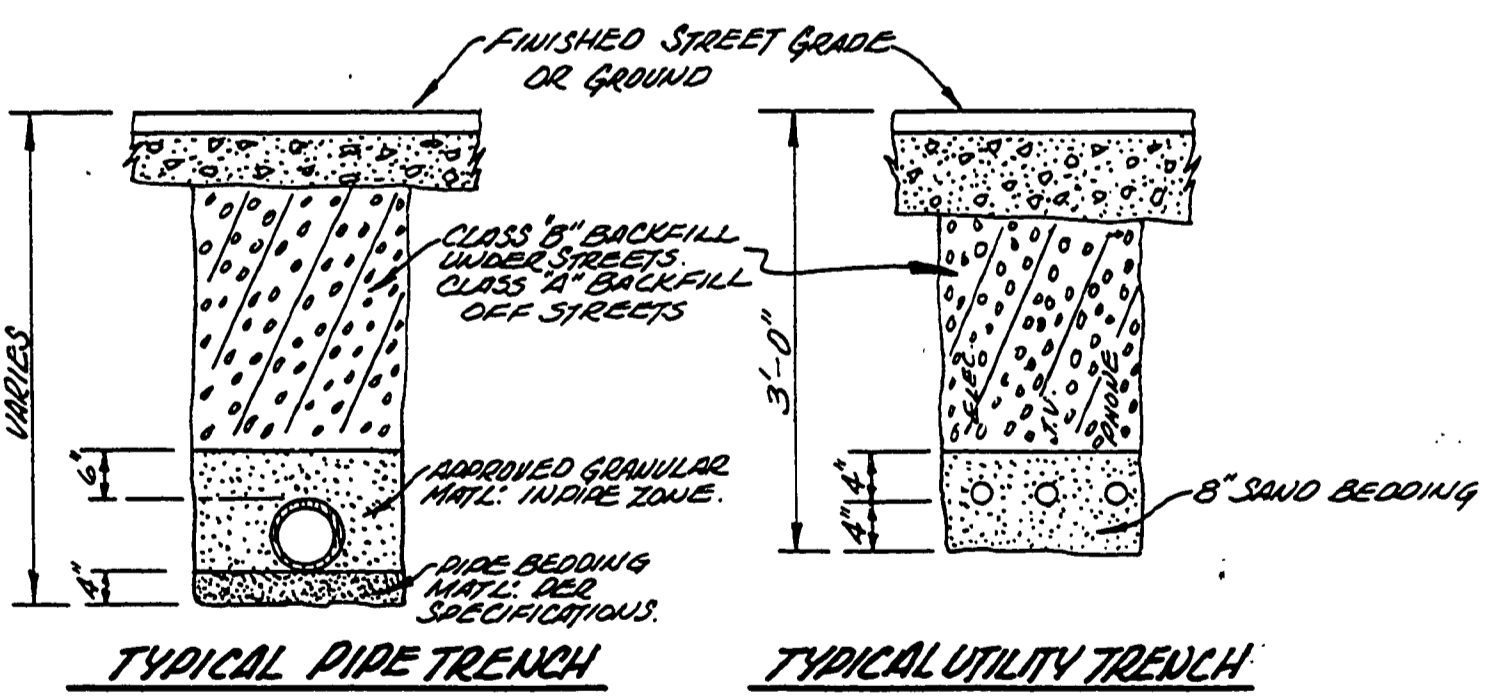
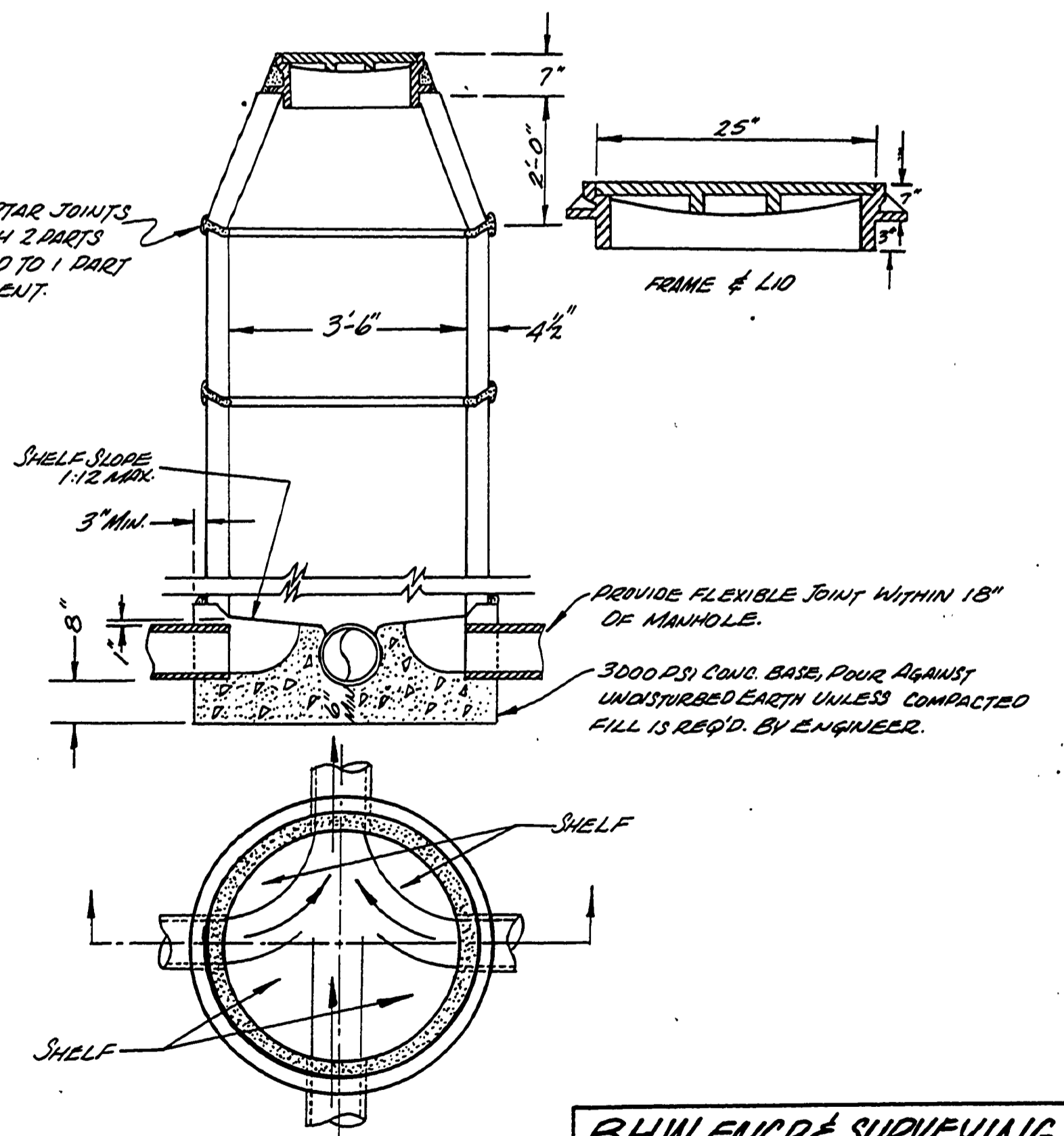
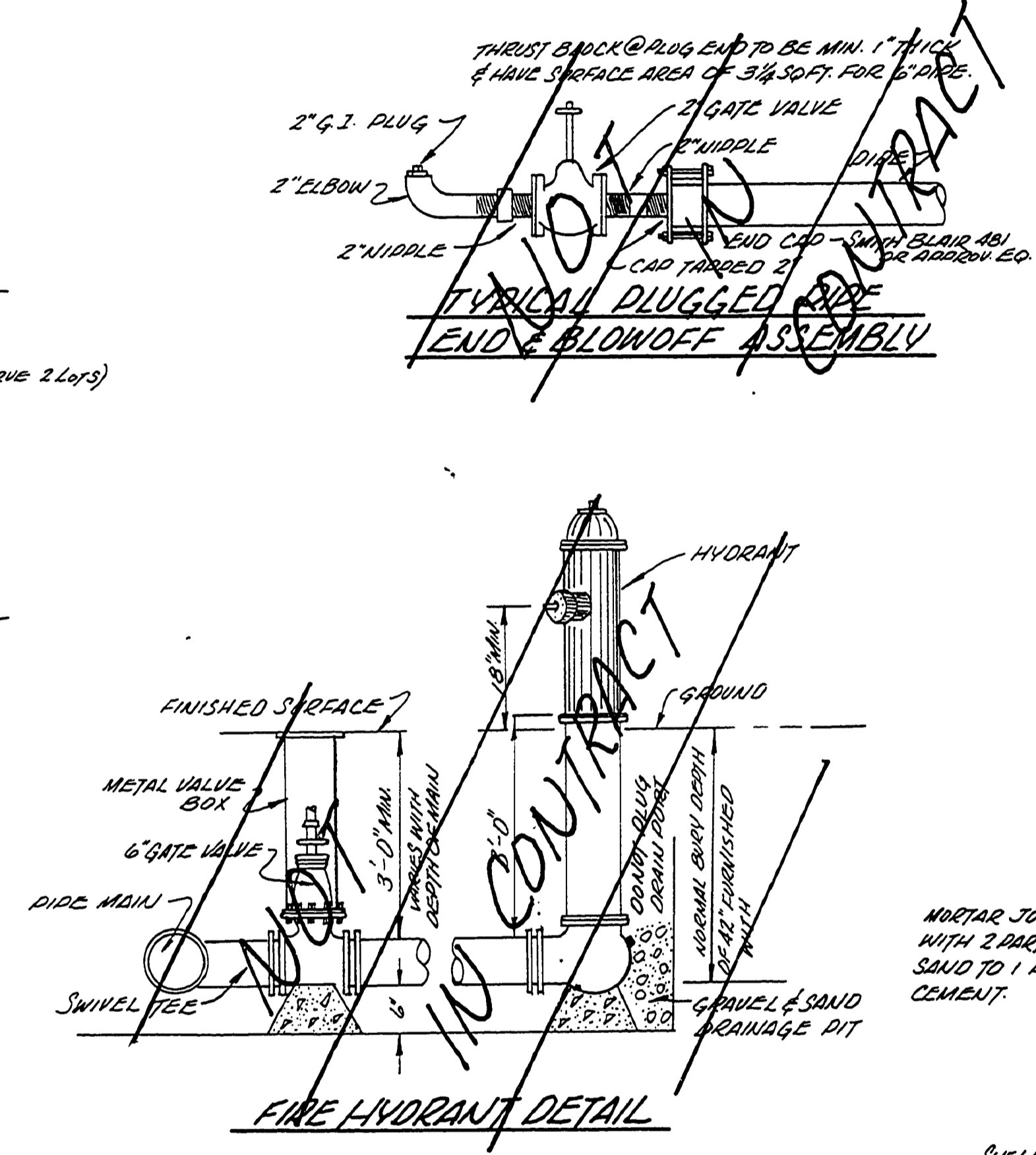
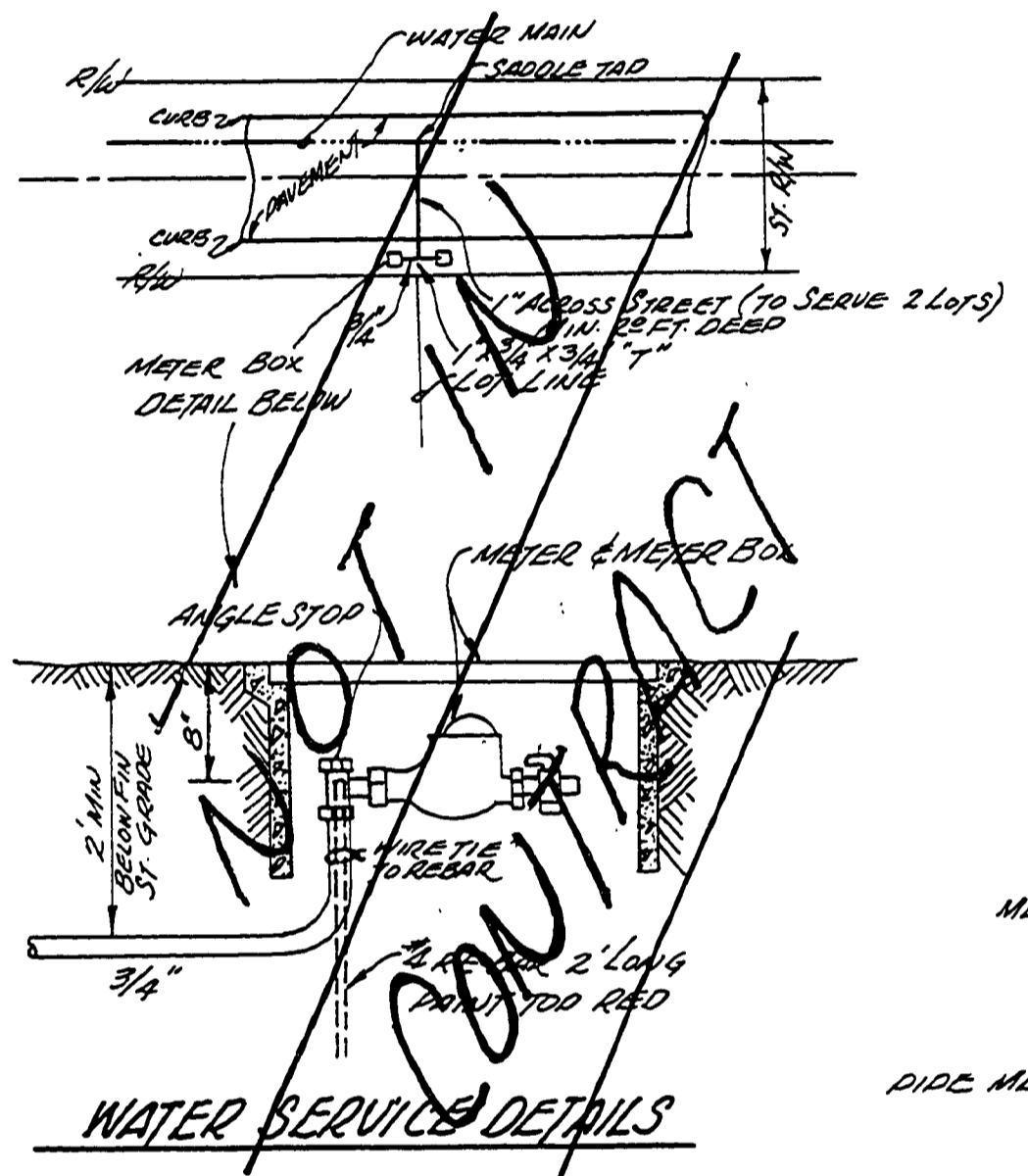
GENERAL NOTES:

- 1) ALL WORK SHALL BE IN CONFORMANCE WITH ADULTERATED EDITIONS OF "STANDARD SPECIFICATIONS FOR PUBLIC WORKS CONSTRUCTION", OREGON CHAPTER, AMERICAN PUBLIC WORKS ASSOCIATION, UNLESS NOTED OTHERWISE.
- 2) SANITARY SEWER PIPE SHALL BE ASTM C 428 TYPE II CLASS 2400 ASBESTOS CEMENT.
- 3) SANITARY SEWERS SHALL BE AIR OR EXFILTRATION TESTED IN ACCORDANCE WITH STANDARD SPECIFICATIONS, AFTER COMPACTING BACKFILL.
- 4) WATER MAINS SHALL BE ASTM C 296 CLASS 150 ASBESTOS CEMENT FITTINGS & APPROPRIATE SIZES SHALL BE COORDINATED TO
- 5) WATER SERVICE SHALL BE COPOLYMER SIZE POLYETHYLENE IN ACCORDANCE WITH ASTM D-2446, SIZE 15 AS DEFINED BY ASTM D 2581, GRADE II TYPE I (DB 210). GATE VALVE STRAP RAPPING SADDLES SHALL BE INSTALLED ON WATER MAIN.
- 6) TRENCH BACKFILL SHALL BE CLASS "B" (BANKMAN) GRAVEL PASSING 2% (SCREEN) UNDER ALL STREETS, CURB TO CURB, & CLASS "A" (SUITABLE EXCAVATED MATERIAL) ELSEWHERE, ALL TRENCHES WILL BE WATER SETTLED.
- 7) WATER & SEWER PIPE SHALL BE INSTALLED IN ACCORDANCE WITH REGULATIONS & SPECIFICATIONS OF AGENCY GOVERNING INSTALLATION.
- 8) STREET SUBGRADE & BASE SHALL BE COMPACTED TO 95% RELATIVE COMPACTION. UNSUITABLE OR UNSUITABLE MATERIAL SHALL BE REMOVED AND REPLACED WITH SUITABLE SELECTED MATERIAL IN ACCORDANCE WITH SECTION B OF THE STD. SPECIFICATIONS.
- 9) CONCRETE SHALL BE CURS 5 (1/2" MAX. AGGREGATE SIZE) WITH 5% SACKS CEMENT PER CUBIC YARD OF CONCRETE, WITH A MIN. COMPRESSIVE STRENGTH NOT LESS THAN 3000 P.S.I. AT 28 DAYS WHEN TESTED IN ACCORDANCE WITH ASTM C 39-66.
- 10) WATER MAINS SHALL BE PRESSURE TESTED, FLUSHED, STABILIZED, AND PROVEN TO BE LEAK FREE & PROVED TO BE LEAK FREE. CONTRACTOR TO COORDINATE WITH WATER DISTRICT.
- 11) ALL THROUGH BLOCKS SHALL BE 2' X 3' X 1' MINIMUM UNLESS NOTED.
- 12) WATER MAINS SHALL HAVE 3/4" MIN. COVER TO FINISHED GRADE.
- 13) WHENEVER A CROSSING SEWER LINE IS LESS THAN 18" LOWER THAN A WATER LINE, THE SEWER LINE SHALL BE DUCTILE IRON PIPE 9" EACH SIDE OF WATER LINE.
- 14) THE CONTRACTOR SHALL LOCATE AND PROTECT ALL EXISTING UNDERGROUND UTILITIES. THE CONTRACTOR SHALL CONTACT & COORDINATE WITH PACIFIC POWER & LIGHT AND PACIFIC NORTHWEST BELL TELEPHONE COMPANIES TO PROVIDE UNDERGROUND SERVICE TO SUBDIVISION.
- 15) THE CONTRACTOR SHALL COORDINATE WATER SERVICE WITH OREGON WATER CORPORATION.
- 16) ALL SANITARY SEWERS SHALL BE RE-TESTED AFTER CURB & GUTTERS ARE PLACED AND JUST PRIOR TO THE PLACING OF ASPHALT PAVING. TESTING TO BE ACCORDANT TO THE NORTH OREGON SANITARY DISTRICT.



SHEET NO. 1: INDEX & DETAILS.

SHEET NO. 2: PAVING & SEWERS PLANS & PROFILES



DOUGLAS COUNTY PUBLIC WORKS DEPT.

APPROVED

By: J.S. [Signature] Date: 6-23-78

DETAIL & INDEX SHEET

TRUST SUBDIVISION

TRUST AVENUE

(CO. RD. NO. 362)

S. 1, T. 27 S., R. 6 W., W. N.

M.P. 0.00 - 0.11

BHW ENGR & SURVEYING ROSEBURG, OREGON

DATE: 9-3-77

DESIGNED BY: BOVE

CHECKED BY:

JOB NO.:

SHEET NO. 1

OF 2 SHEETS

11000000