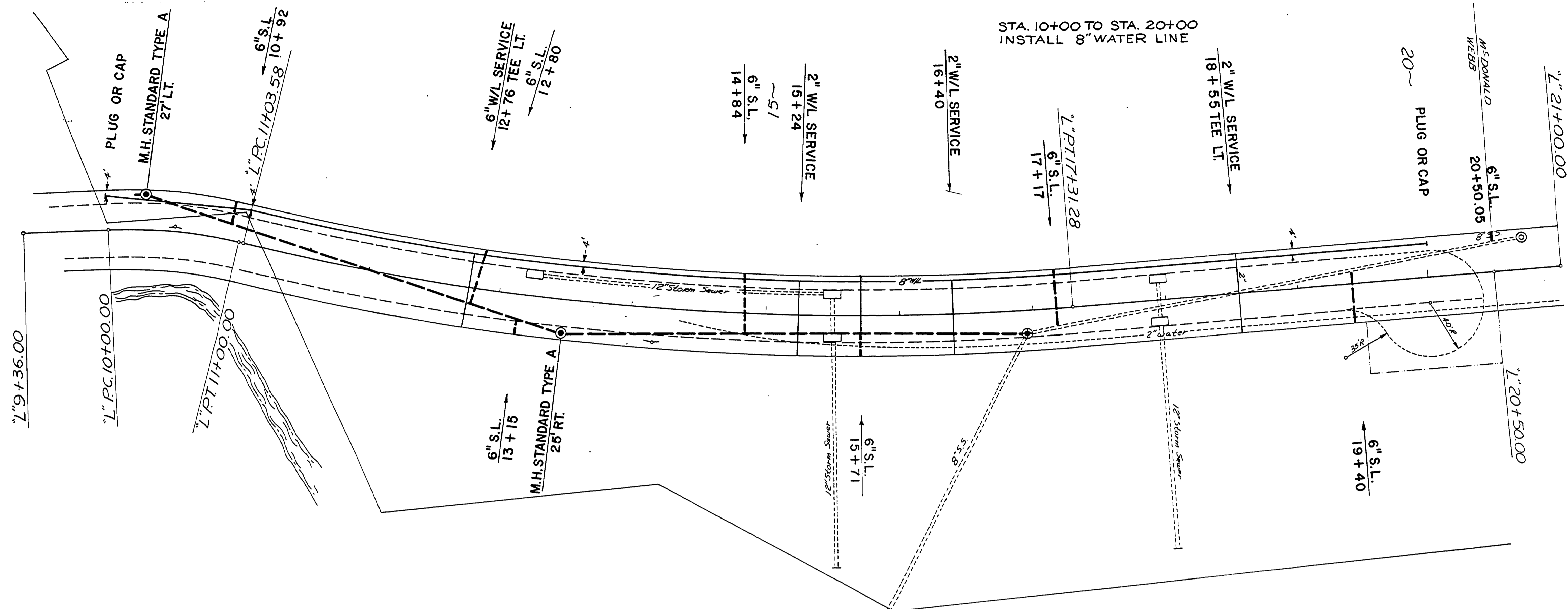
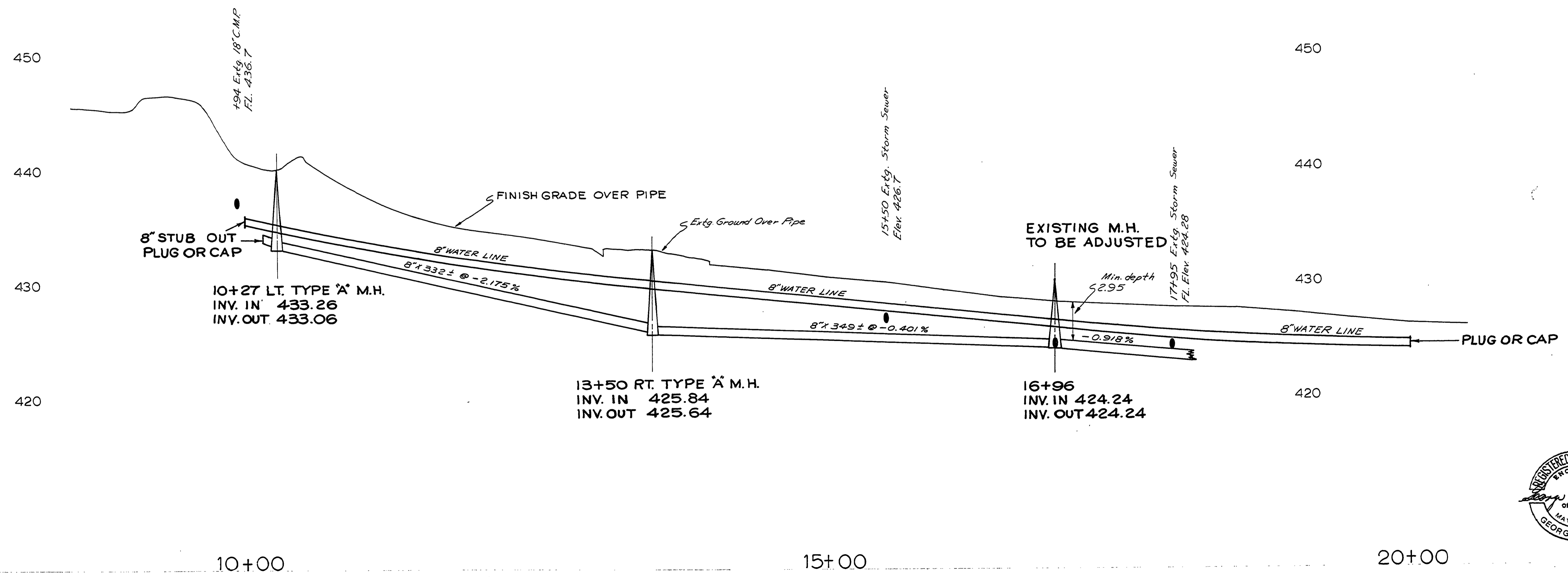


Sec. 28 T23S R 5W W.M.



FILED
RECEIVED
AUG 2 1977
COUNTY SURVEYOR
DOUGLAS COUNTY, ORE.

NOTE:
FOR DESCRIPTION OF FACILITY
& DISCHARGE OF EXISTING 8"
SANITARY SEWER REFER TO
D.E.Q. FILE # 75064.



AS BUILT 8/2/79 L.L.
DOUGLAS COUNTY
PUBLIC WORKS DEPARTMENT
PRESCOTT AVENUE #360
1977 SHT. 5
GEORGE E. GRUBB, DIRECTOR

00000022