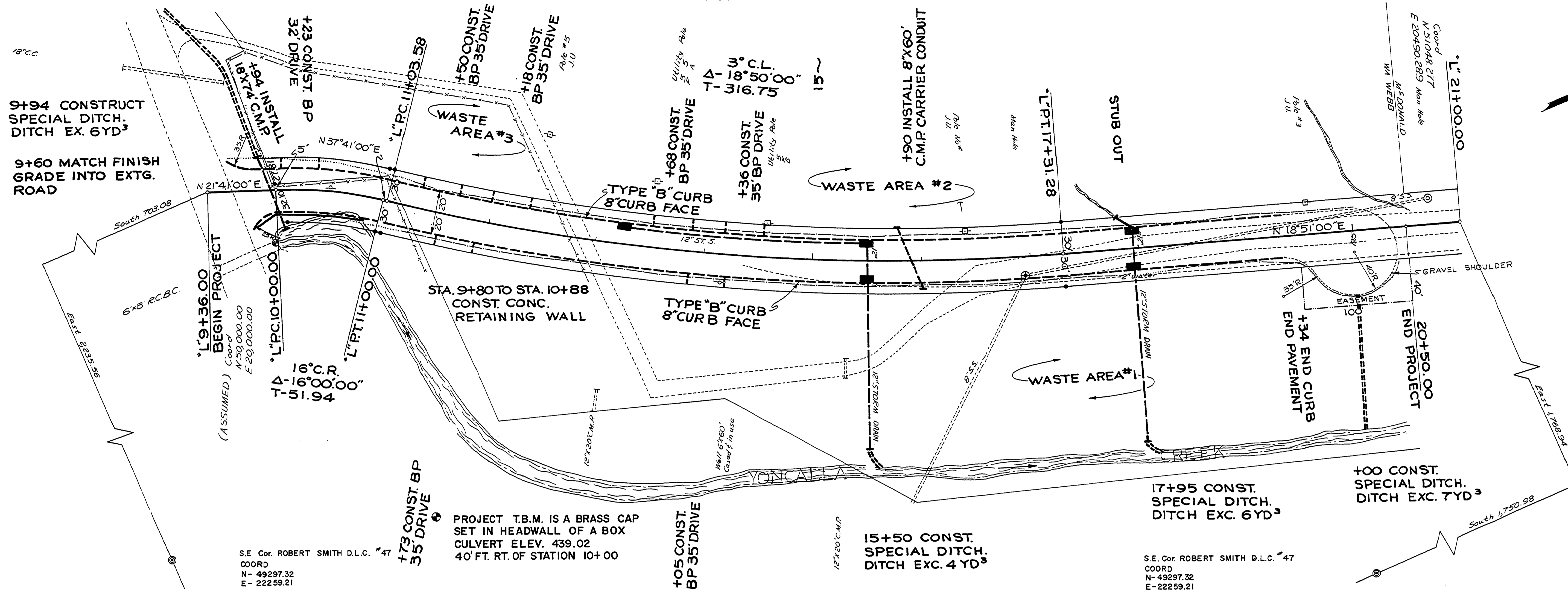
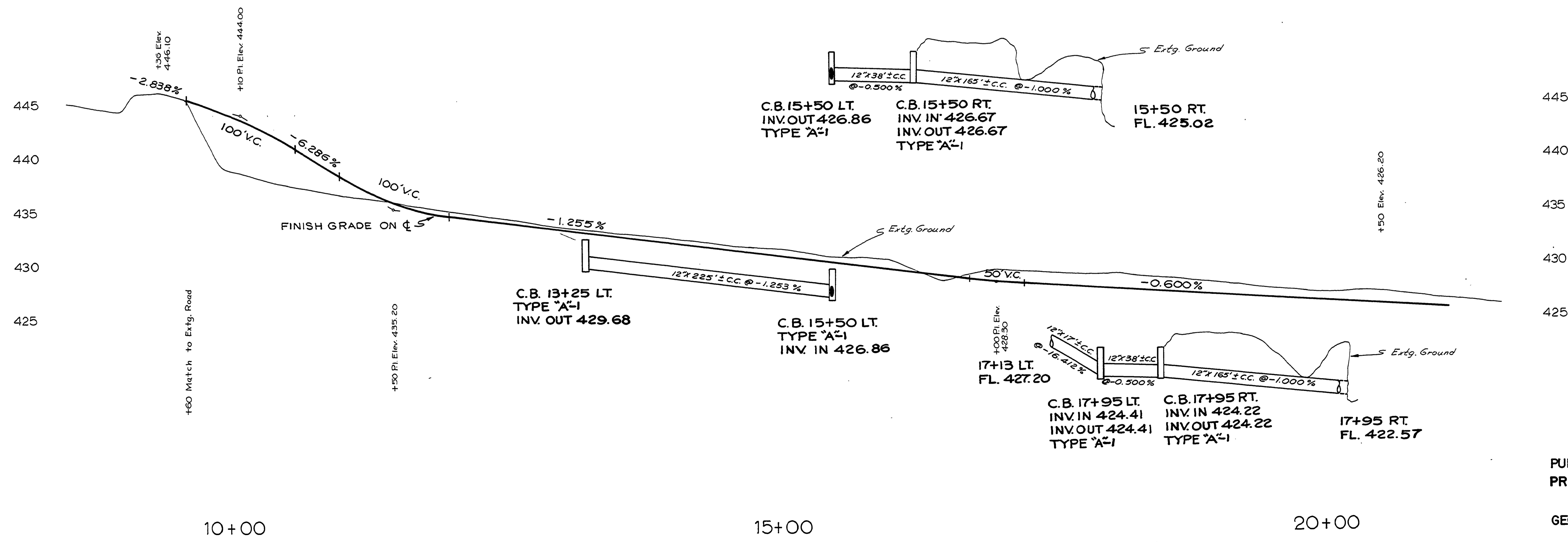


Sec. 28 T 23 S R 5 W W.M.



- NOTE:
- 1- AN "S" SHALL BE STAMPED IN TOP OF CURB OVER EACH SANITARY SERVICE CONNECTION & STUB OUTS
 - 2- AN "W" SHALL BE STAMPED IN TOP OF CURB OVER EACH WATER LINE SERVICE CONNECTION & STUB OUTS



AS BUILT 8/2/79 L.L.
 DOUGLAS COUNTY
 PUBLIC WORKS DEPARTMENT
 PRESCOTT AVENUE #360
 1977 SHT. 3
 GEORGE E. GRUBB, DIRECTOR

00000021