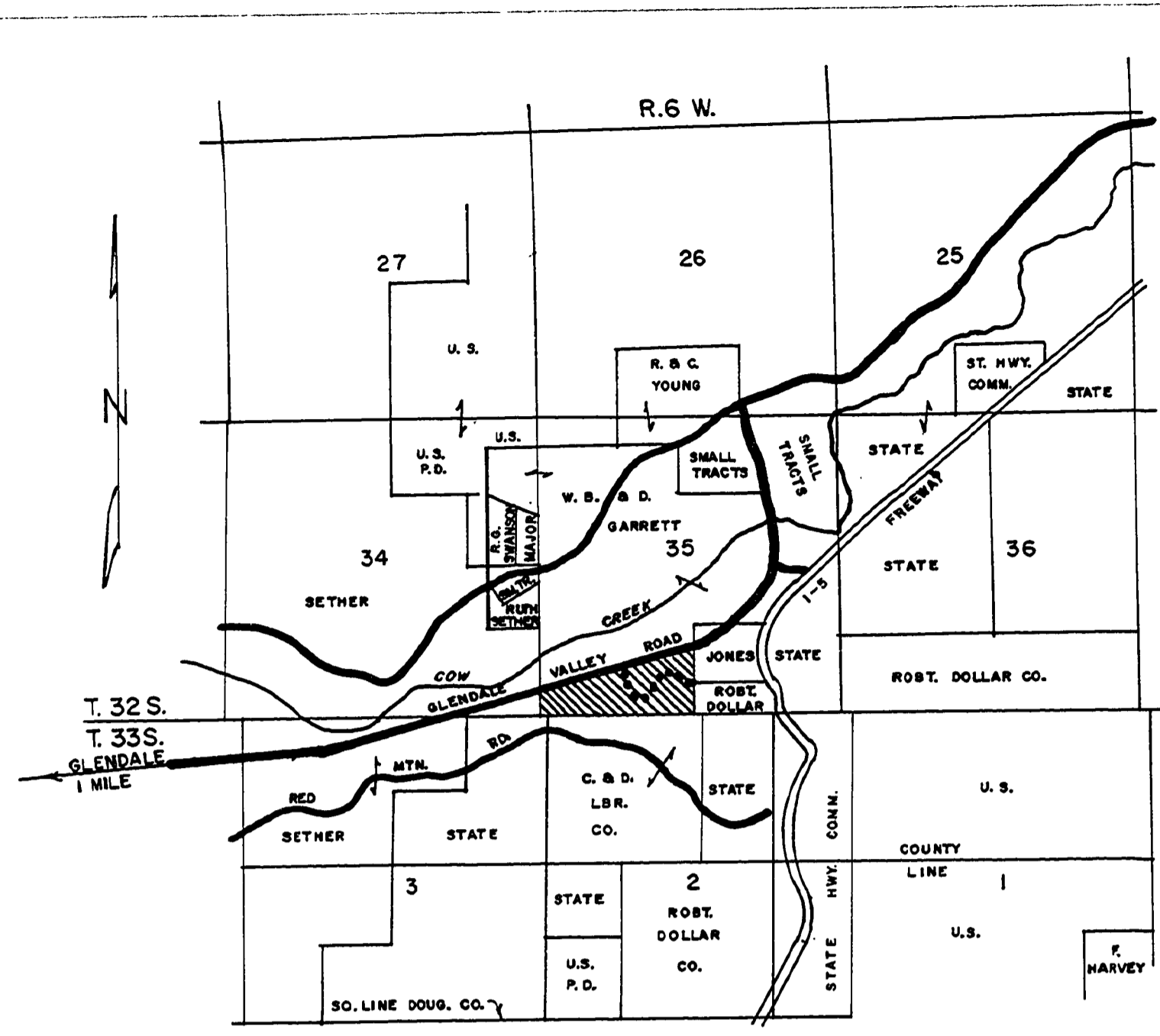
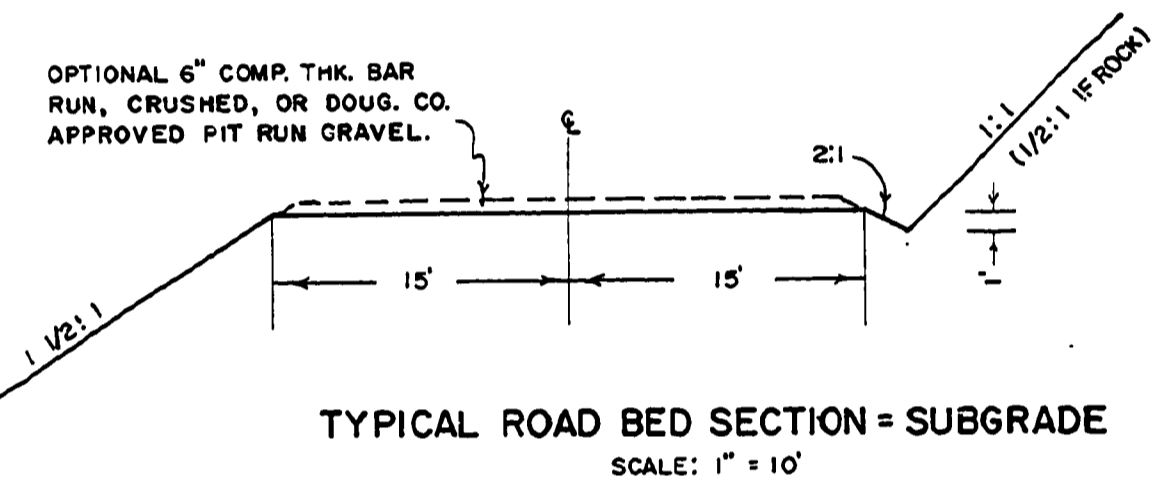


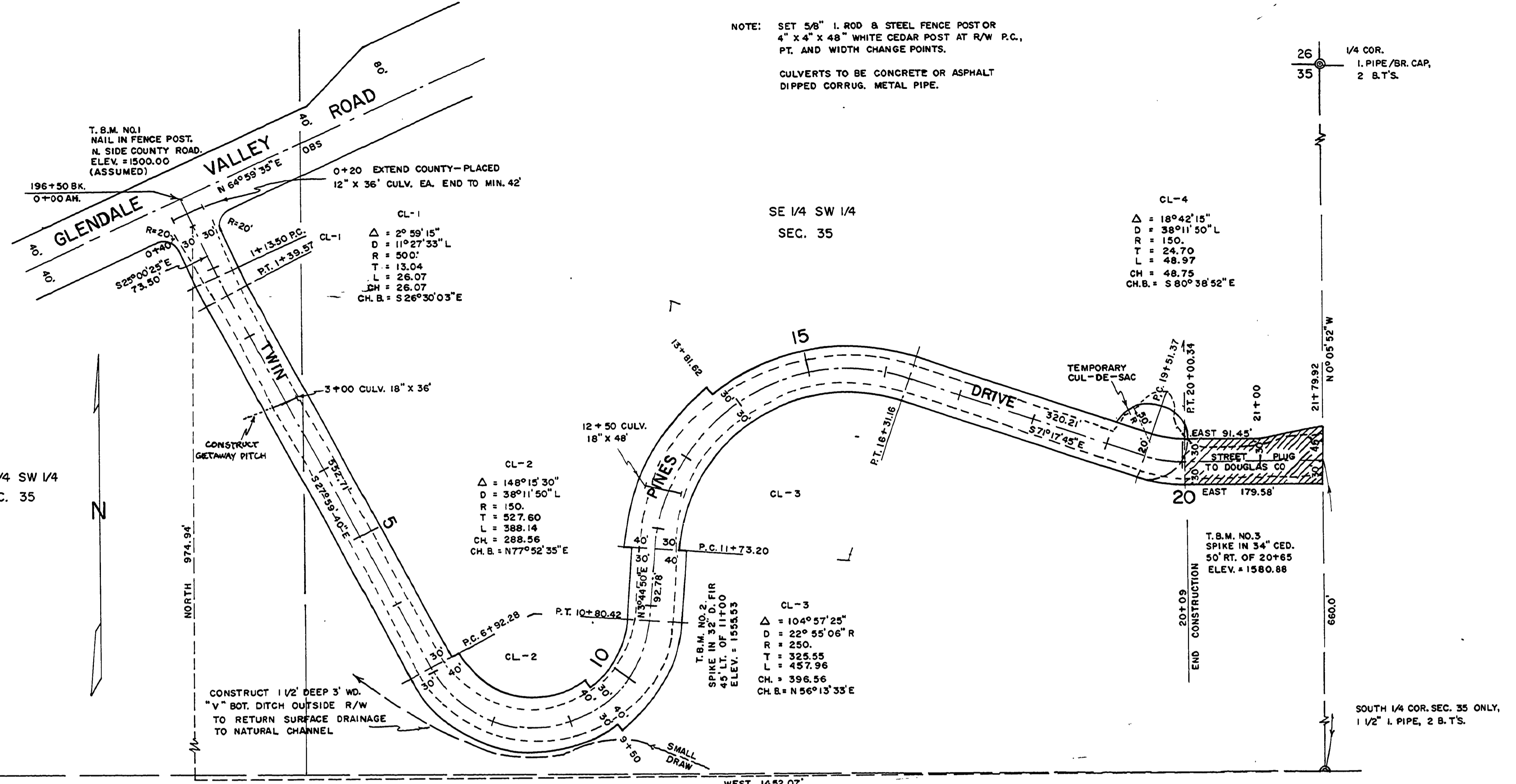
DATE: \_\_\_\_\_ BY: \_\_\_\_\_  
 PLAN: \_\_\_\_\_  
 NOTE: CHECKED: \_\_\_\_\_  
 NO. \_\_\_\_\_



VICINITY MAP  
 SCALE: 1 INCH = 1/2 MILE



TYPICAL ROAD BED SECTION = SUBGRADE  
 SCALE: 1" = 10'



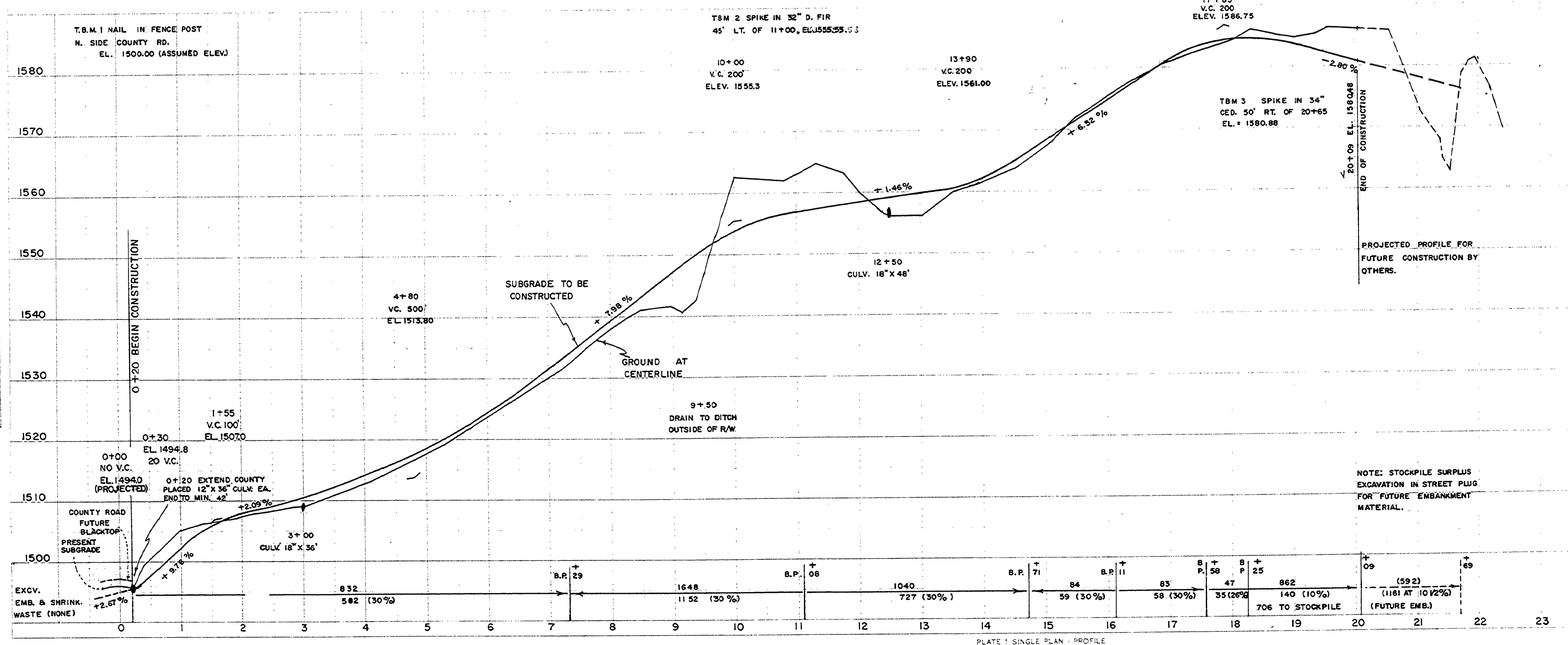
NOTE: SET 5/8" I. ROD & STEEL FENCE POST OR 4" X 4" X 48" WHITE CEDAR POST AT R/W P.C., P.T. AND WIDTH CHANGE POINTS.  
 CULVERTS TO BE CONCRETE OR ASPHALT DIPPED CORRUG. METAL PIPE.

CL-4  
 $\Delta = 18^\circ 42' 15"$   
 $D = 38^\circ 11' 50" L$   
 $R = 150.$   
 $T = 24.70$   
 $L = 48.97$   
 $CH. B. = 48.75$   
 $CH. B. = S 80^\circ 38' 52" E$

CL-2  
 $\Delta = 148^\circ 15' 30"$   
 $D = 36^\circ 11' 50" L$   
 $R = 150.$   
 $T = 52.7.60$   
 $L = 568.14$   
 $CH. B. = 288.56$   
 $CH. B. = N 77^\circ 52' 35" E$

CL-3  
 $\Delta = 104^\circ 57' 25"$   
 $D = 22^\circ 55' 06" R$   
 $R = 250.$   
 $T = 325.55$   
 $L = 457.96$   
 $CH. B. = 396.56$   
 $CH. B. = N 56^\circ 13' 35" E$

DATE: \_\_\_\_\_ BY: \_\_\_\_\_  
 PROFILE: \_\_\_\_\_  
 NOTE: CHECKED: \_\_\_\_\_  
 NO. \_\_\_\_\_



NOTE: STOCKPILE SURPLUS EXCAVATION IN STREET PLUS FOR FUTURE EMBANKMENT MATERIAL.

**TWIN PINES DRIVE**  
 IN S 1/2 SW 1/4 SECTION 35, TWP 32 S,  
 R.6 W., W.M., DOUGLAS COUNTY, OREGON.  
 OWNERS & ] A.V. MOHR & WM.A. WELLS  
 DEVELOPERS ] BOX 133, GLENDALE, ORE.  
 SCALE: HOR. - 1 INCH = 100 FT. VERT. - 1 INCH = 10 FT.  
 AUG. 1 TO OCT. 6, 1971. ROBT. M. THOMPSON & ASSOC.

