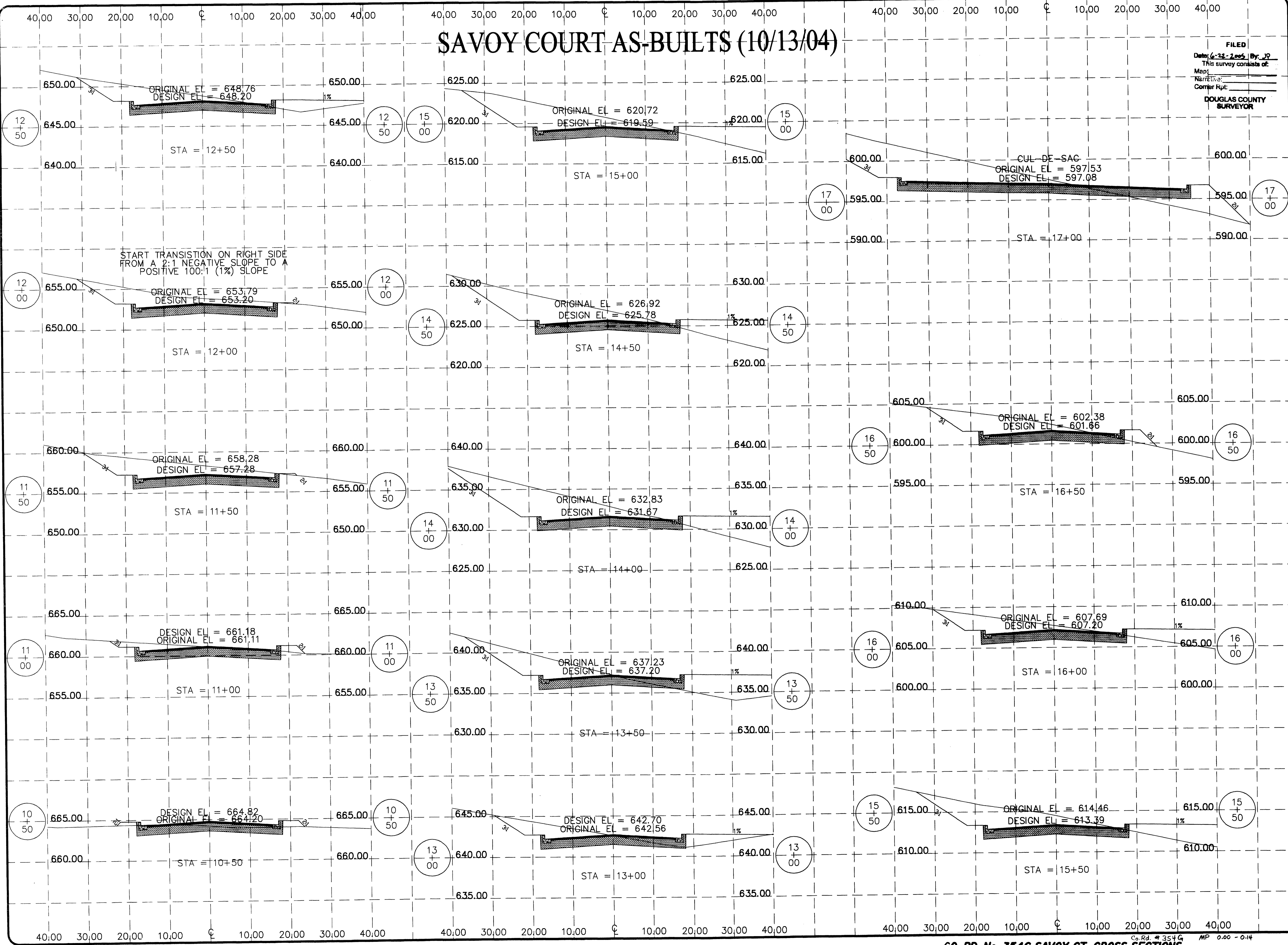


SAVOY COURT AS-BUILTS (10/13/04)

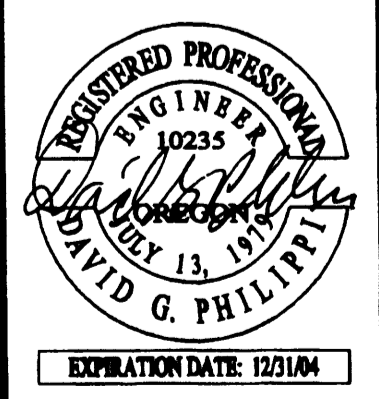
FILED
 Date: 6-22-2005 By: JF
 This survey consists of:
 Map:
 Narrative:
 Corner Rpt:
 DOUGLAS COUNTY
 SURVEYOR



STULL ENTERPRISES
 ENGINEERING & SURVEYING, INC.
 4133 MAIN ST. ROSSBURG, OR 97070
 PHONE (541) 673-9966 FAX (541) 673-0105

SAVOY COURT SUBDIVISION
 SAVOY COURT
 STREET CROSS SECTIONS

DATE: MAY 20, 2004
 REV. #1: -
 REV. #2: -
 REV. #3: -
 REV. #4: -
 REV. #5: -



PROJ. # 04-011
 SHEET NO.
 4 of 9