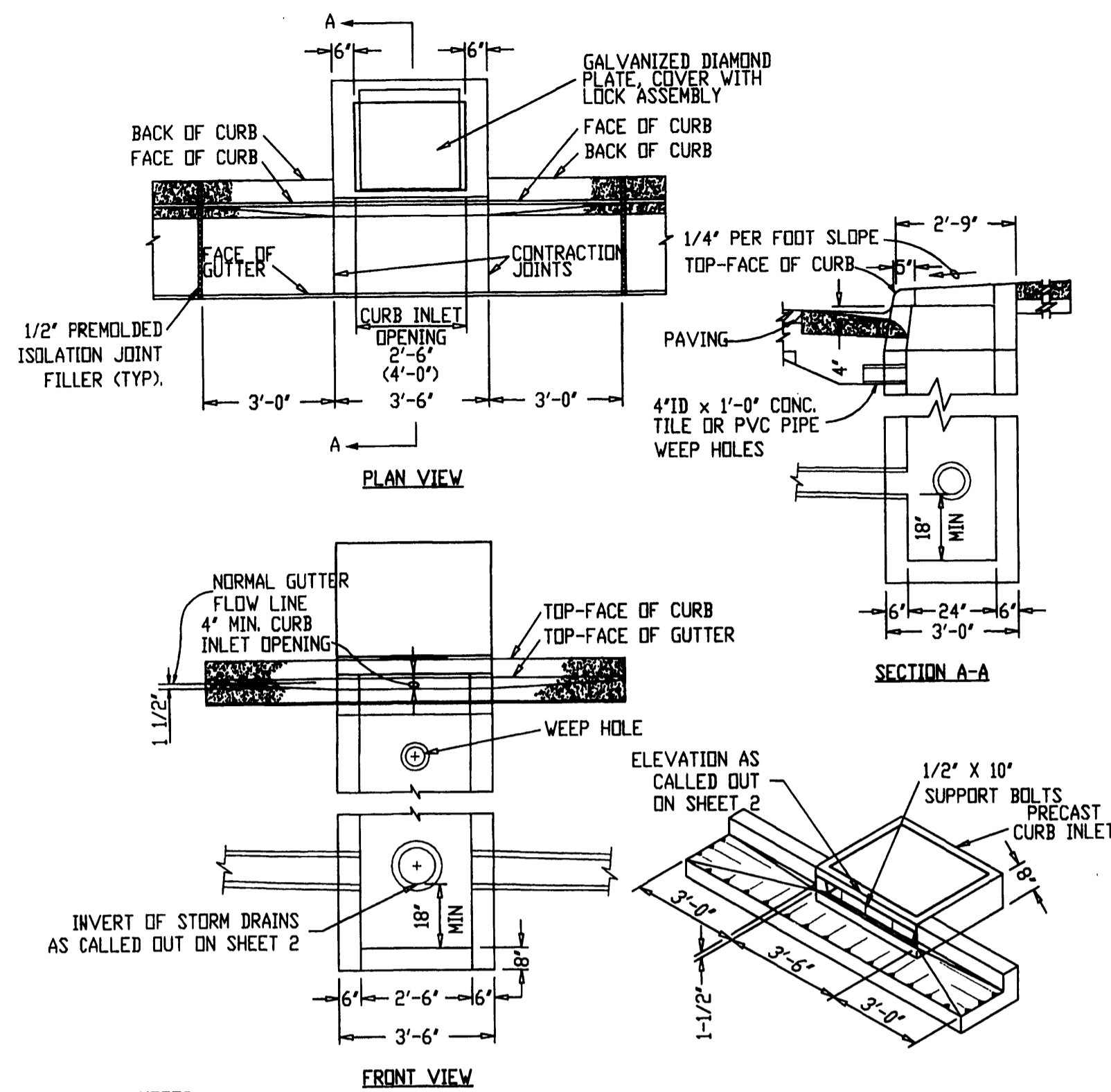


- NOTES:**
1. ALL RADII SHALL BE 3/4\"/>
  - 2. ISOLATION JOINTS SHALL BE PLACED ONLY AS SPECIFIED.
  - 3. CONTRACTION JOINTS SHALL BE PLACED AT 15' INTERVALS AND SHALL EXTEND AT LEAST 50% THROUGH THE CURB OR CURB AND GUTTER.
  - 4. A CONTRACTION JOINT SHALL BE PLACED ALONG AND OVER WEEP HOLE THROUGH THE CURB AND THROUGH THE SIDEWALK.
  - 5. WHEN SIDEWALKS ARE CONSTRUCTED, EXTEND 3\"/>
  - 6. LOCATE ONE WEEP HOLE PER LOT, AT LOWEST LOT FRONTAGE ELEVATION.

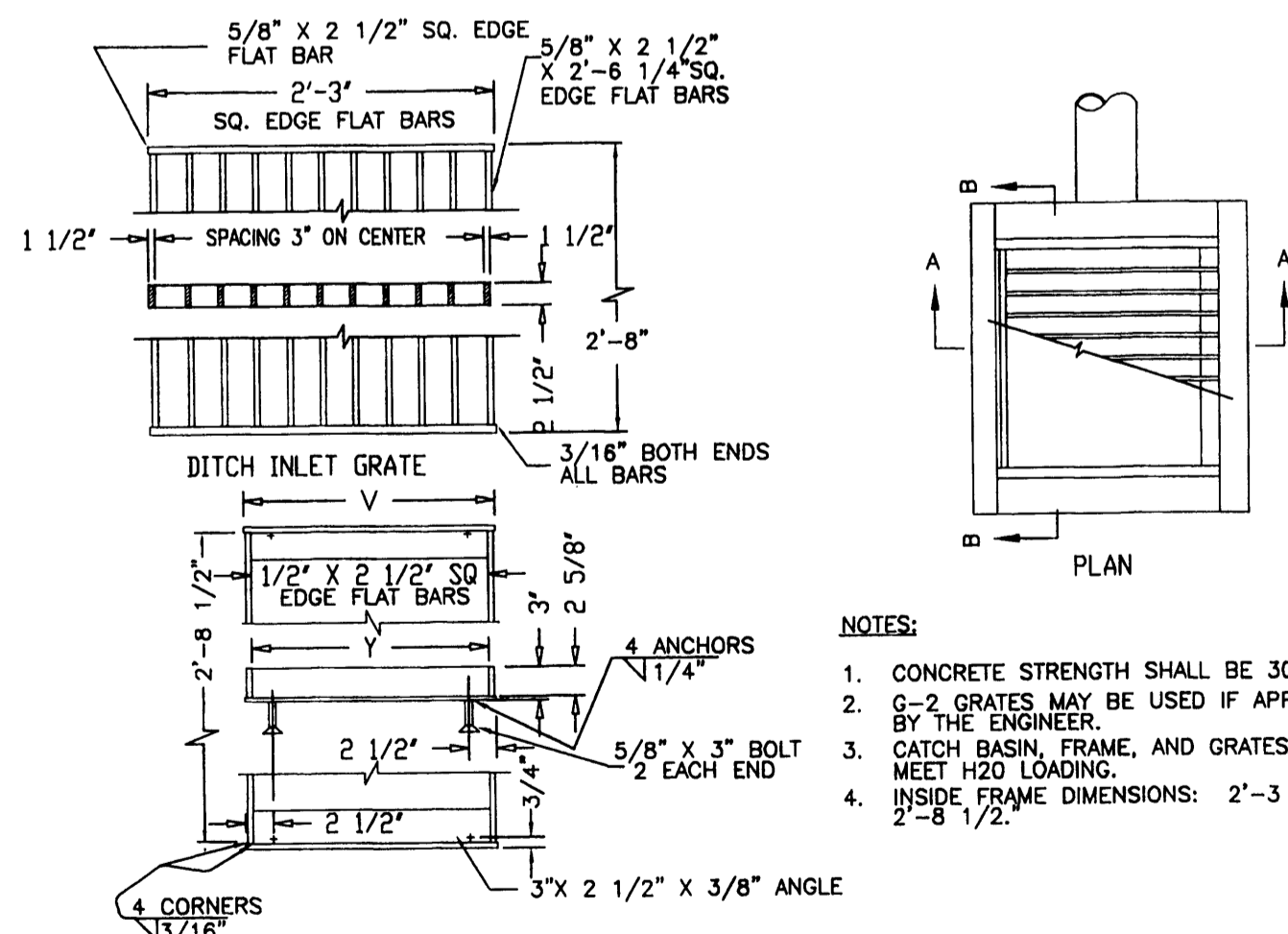
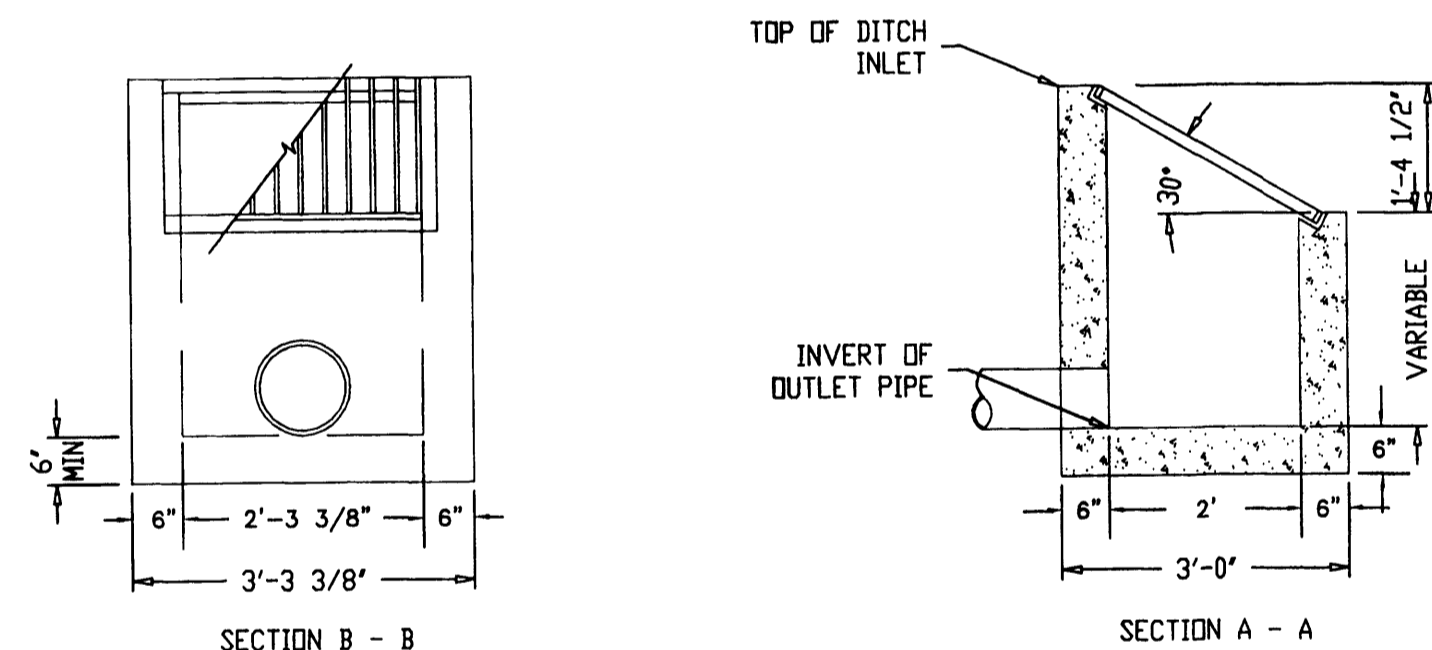
**CURB AND GUTTER,  
CURB, AND WEEP HOLE**

1  
7 TYPICAL CURB & GUTTER DETAIL  
N.T.S.



- NOTES:**
1. CURB INLET TOP AND BASE SHALL MEET H20 LOADING
  2. CONCRETE STRENGTH SHALL BE 3000 PSI.
  3. ALL FABRICATED METAL PARTS SHALL BE HOT-DIPPED GALVANIZED AFTER FABRICATION.
  4. FOR STEEP GRADES USE STD. PRECAST INLET WITH 4'-0\"/>
  - 5. CURB INLET BASE MAY BE PRECAST OR CAST-IN-PLACE.

2  
7 CURB INLET DETAIL  
N.T.S.



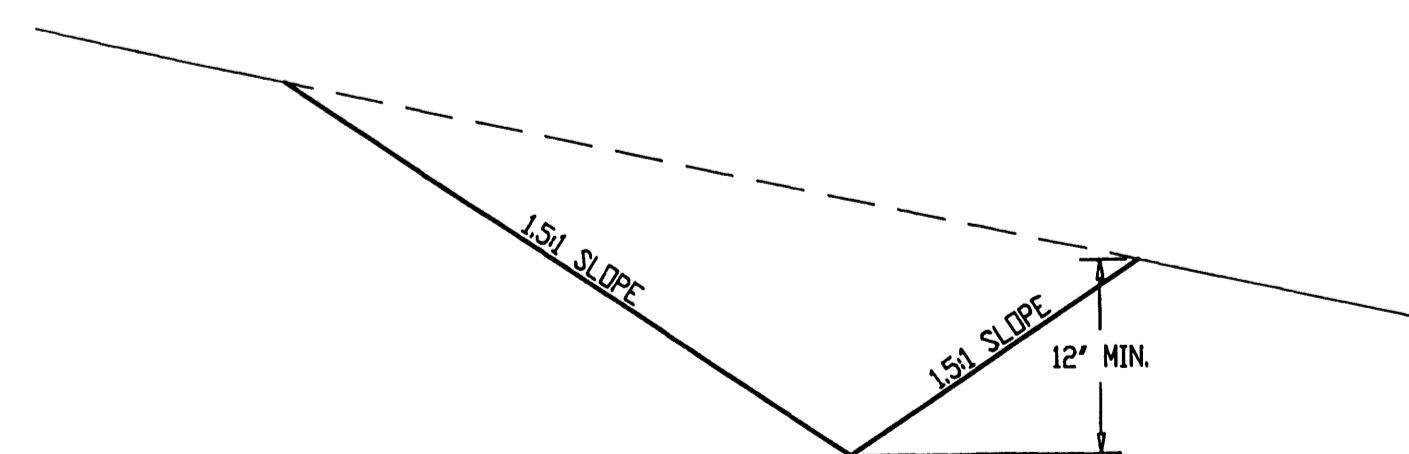
- NOTES:**
1. CONCRETE STRENGTH SHALL BE 3000 PSI.
  2. G-2 GRATES MAY BE USED IF APPROVED BY THE ENGINEER.
  3. CATCH BASIN, FRAME, AND GRATES SHALL MEET H20 LOADING.
  4. INSIDE FRAME DIMENSIONS: 2'-3 3/8\", 2'-8 1/2\"/>

**NOTE:**  
3/8\"/>
 FILLET WELDED, RESISTANCE WELDED OR ELECTROFORGED TO BEARING BARS.

**DITCH INLET FRAME**

INLET TYPE	V	Y	Y1	NO. OF BARS	TYPE
D	2'-4 3/4"	2'-3 3/8"	2'-3"	9	1

3  
7 DITCH INLET DETAIL  
N.T.S.



4  
7 DITCH CROSS SECTION  
N.T.S.

**SAVOY COURT AS-BUILTS (10/13/04)**

FILED  
Date: 6-22-2005 By: J.P.  
This survey consists of:  
Map:  
Narrative:  
Corner Rpt:  
DOUGLAS COUNTY  
SURVEYOR

STULL ENTERPRISES

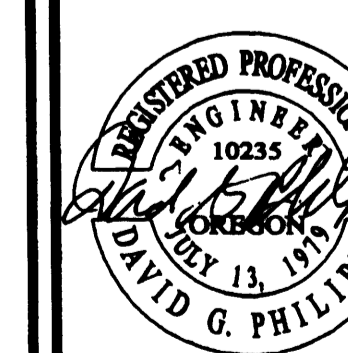
ENGINEERING & SURVEYING, INC.  
411 S.E. MAIN ST., ROSELAND, OR 97070  
PHONE (503) 672-6966 FAX (503) 672-0105

BTS

SAVOY COURT SUBDIVISION

DETAILS

DATE: MAY 20, 2004  
REV. #1: -  
REV. #2: -  
REV. #3: -  
REV. #4: -  
REV. #5: -



PROJ. # 04-011  
SHEET NO.

7 of 9