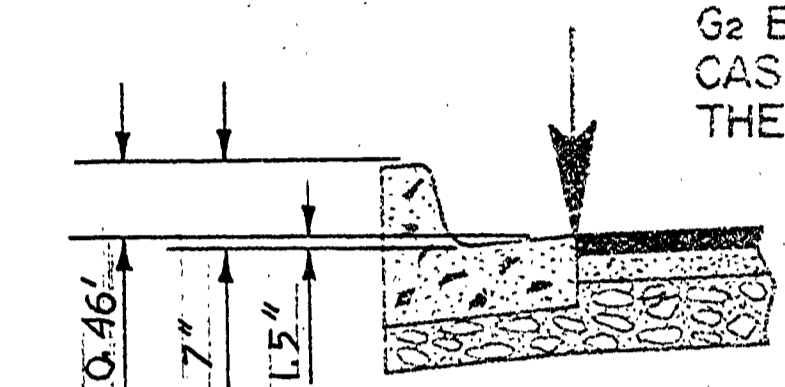
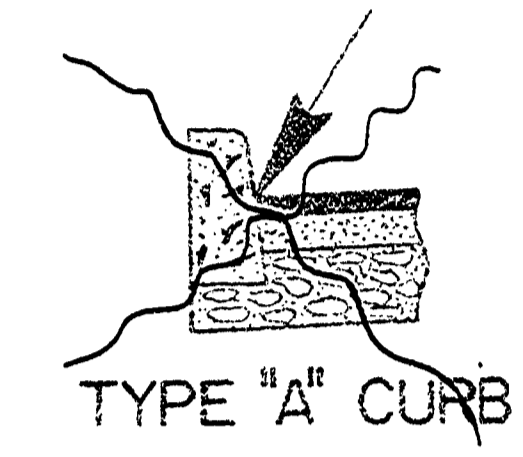


W	R ₁	Δ ₁	L ₁	R ₂	Δ ₂	L ₂	Δ ₂	L ₂	X
35	35	45°34'20"	2784	40	27°08'40"	20.94	15°34'20"	10.87	53.56
35	40	44°02'55"	30.75	40	268°05'50"	20.94	14°02'55"	9.81	55.62
41	35	42°16'07"	25.82	40	264°32'14"	20.94	12°16'07"	8.57	50.45
41	40	40°51'55"	28.53	40	261°43'50"	20.94	10°51'55"	7.59	52.34

AREA FIGURES ARE FOR SHADED PORTION OF CUL-DE-SAC. (Ft²)

A	B	C	D	E	F	G	H	J	K	L	M	G ₁	G ₂
548.27	549.44	549.79	550.45	550.94	551.29	551.48	551.52	551.42	551.15	550.74	550.49	549.51	551.00

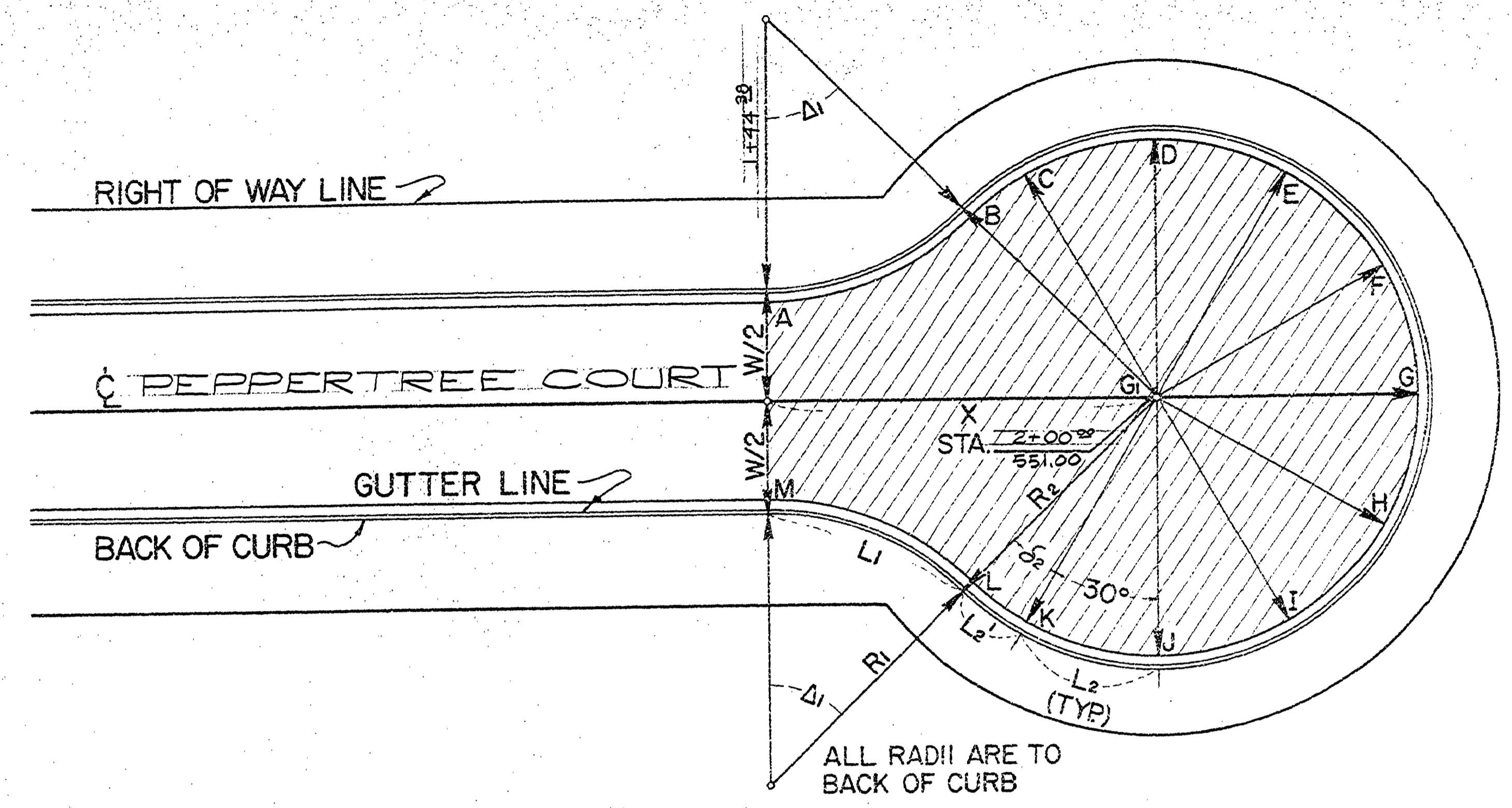
G₂ EXISTS ONLY IN THE CASE OF A V.C. W/G₁ AS THE P.I.



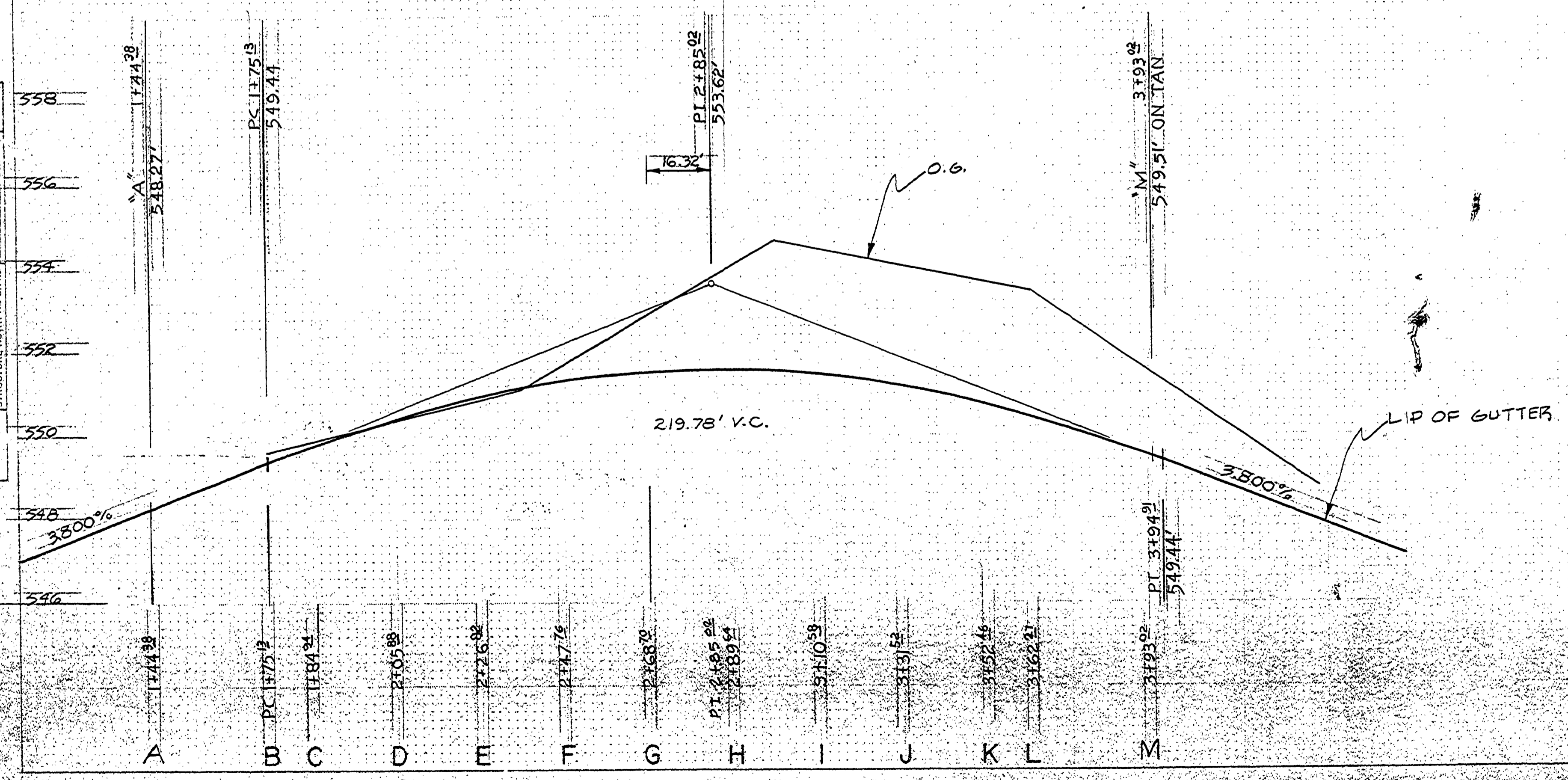
ELEVATIONS LISTED CORRESPOND TO LOCATIONS SHOWN

PLAN
SURVEYED, PLOTTED, CHECKED, RT OF WAY CHECKED.
NOTE BOOK NO.

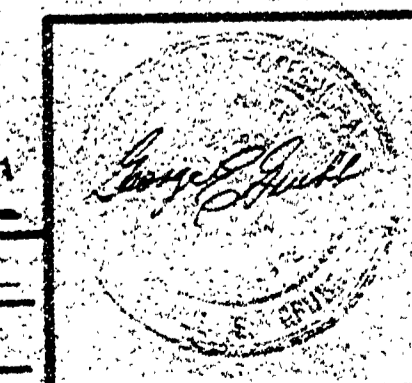
PROFILE
SURVEYED, PLOTTED, CHECKED, STRUCTURE NOTATIONS CHECKED.
NOTE BOOK NO.



CUL-DE-SAC
PLAN SCALE
0 5 10 15 30 45



DOUGLAS COUNTY PUBLIC WORKS DEPT.
APPROVED
DESIGNED: H.L. BART
CHECKED: M.P.



W=35 R=40 R=40
DESCRIPTION: PEPPER TREE CT.
PROJECT#: 12540
DATE: 12/76
DOUGLAS COUNTY RD. DEPT.
STANDARD CUL-DE-SAC LAYOUT
DATE: 1972 STD. DWG. 12