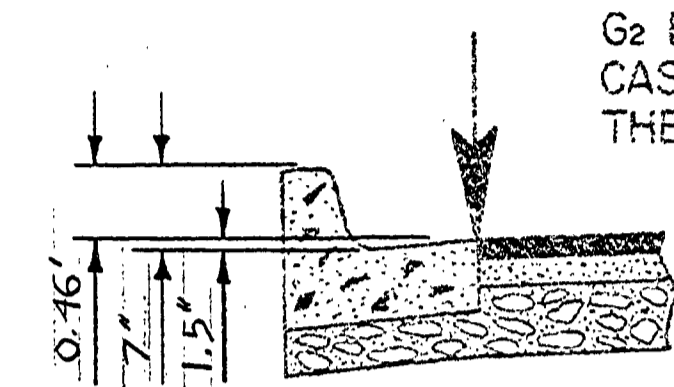
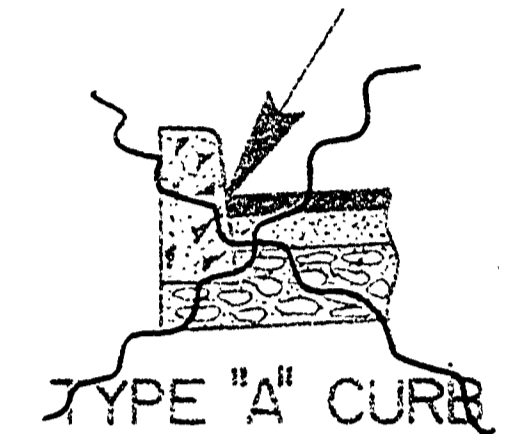


W	R ₁	Δ ₁	L ₁	R ₂	Δ ₂	L ₂	S ₂	L ₂ '	X	AREA
35	35	45°34'20"	2784	40	27°08'40"	2094	15°34'20"	10.87	53.56	5,220
35	40	44°02'55"	3075	40	268°05'50"	2094	14°02'55"	9.81	55.62	5,123
41	35	42°16'07"	25.82	40	264°32'14"	2094	12°16'07"	8.57	50.45	5,207
41	40	40°51'55"	28.53	40	261°43'50"	2094	10°51'55"	7.59	52.34	5,207

AREA FIGURES ARE FOR SHADED PORTION OF CUL-DE-SAC (Ft.²)

A	B	C	D	E	F	G	H	J	K	L	M	G ₁	G ₂
533.53	534.41	534.70	535.25	535.68	535.99	536.18	536.24	536.19	536.01	535.71	534.77	535.75	

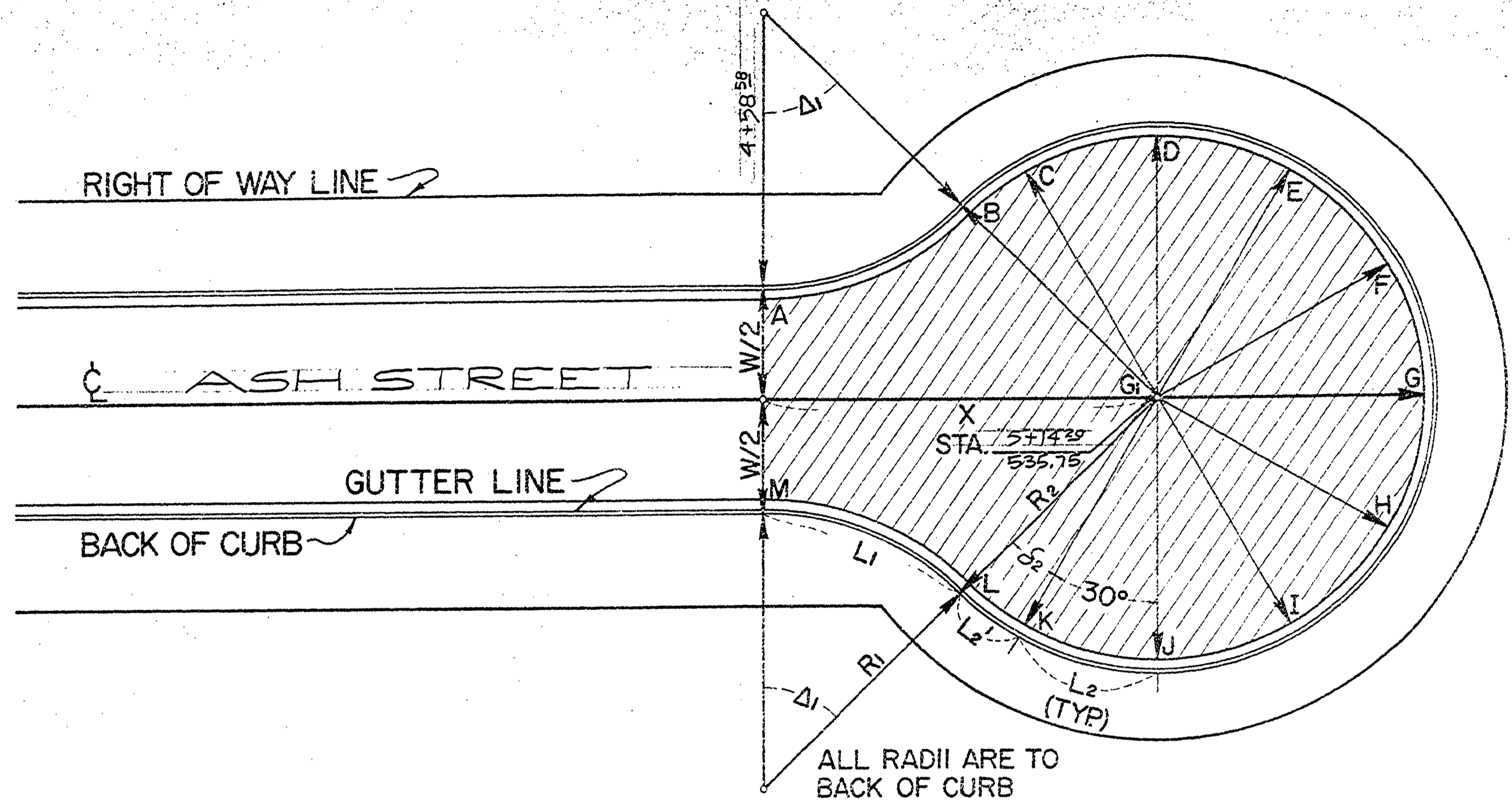


G₂ EXISTS ONLY IN THE CASE OF A V.C. W/G₁ AS THE P.I.

ELEVATIONS LISTED CORRESPOND TO LOCATIONS SHOWN

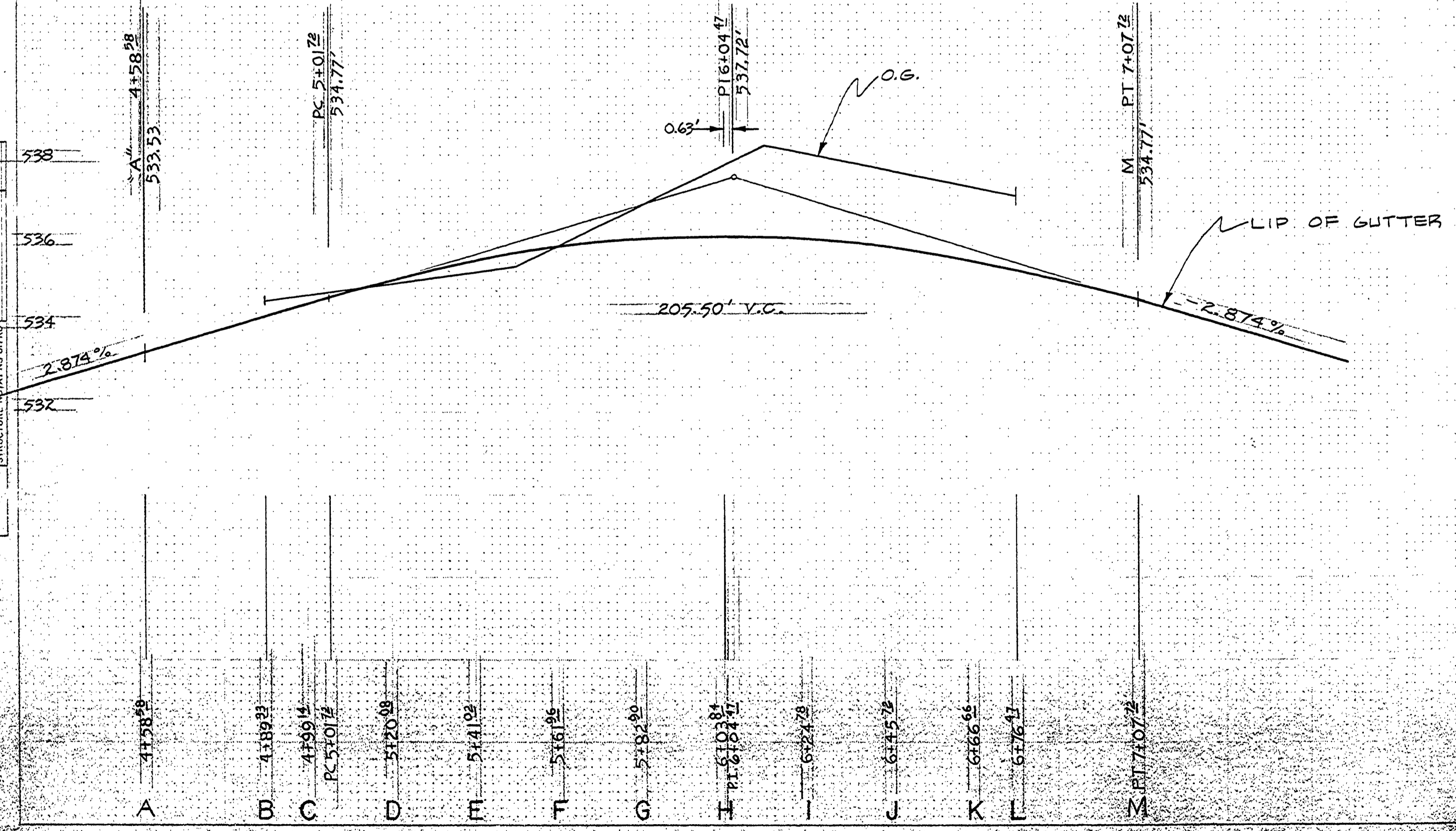
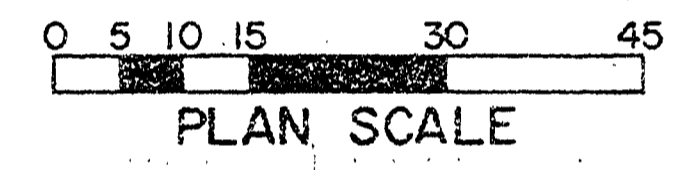
PLAN SURVEYED, PLOTTED, CHECKED, AND CALCULATED BY: [Name] DATE: [Date] NOTE BOOK NO. [Number]

PROFILE SURVEYED, PLOTTED, CHECKED, AND CALCULATED BY: [Name] DATE: [Date] NOTE BOOK NO. [Number]



ALL RADII ARE TO BACK OF CURB

CUL-DE-SAC



W= 35 R= 40 R= 40
 DESCRIPTION ASH ST. CUL-DE-SAC
 PROJECT# [Number] DATE [Date]
 DOUGLAS COUNTY RD. DEPT.
 STANDARD CUL-DE-SAC LAYOUT
 DATE 1972 STD. DWG. [Number]

DOUGLAS COUNTY PUBLIC WORKS DEPT. APPROVED

DESIGNED: H.T. BALL
 CHECKED: M.P.

