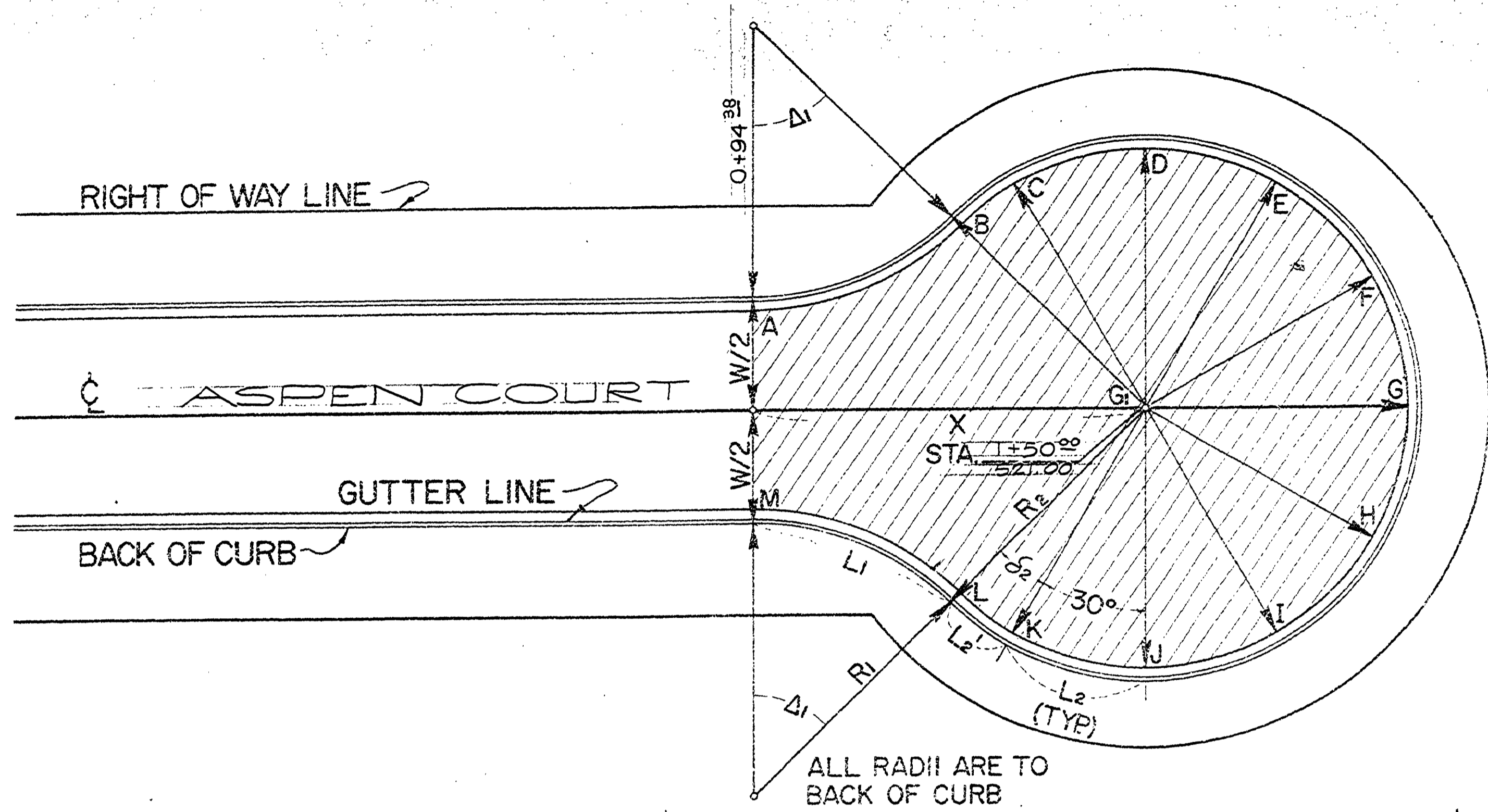
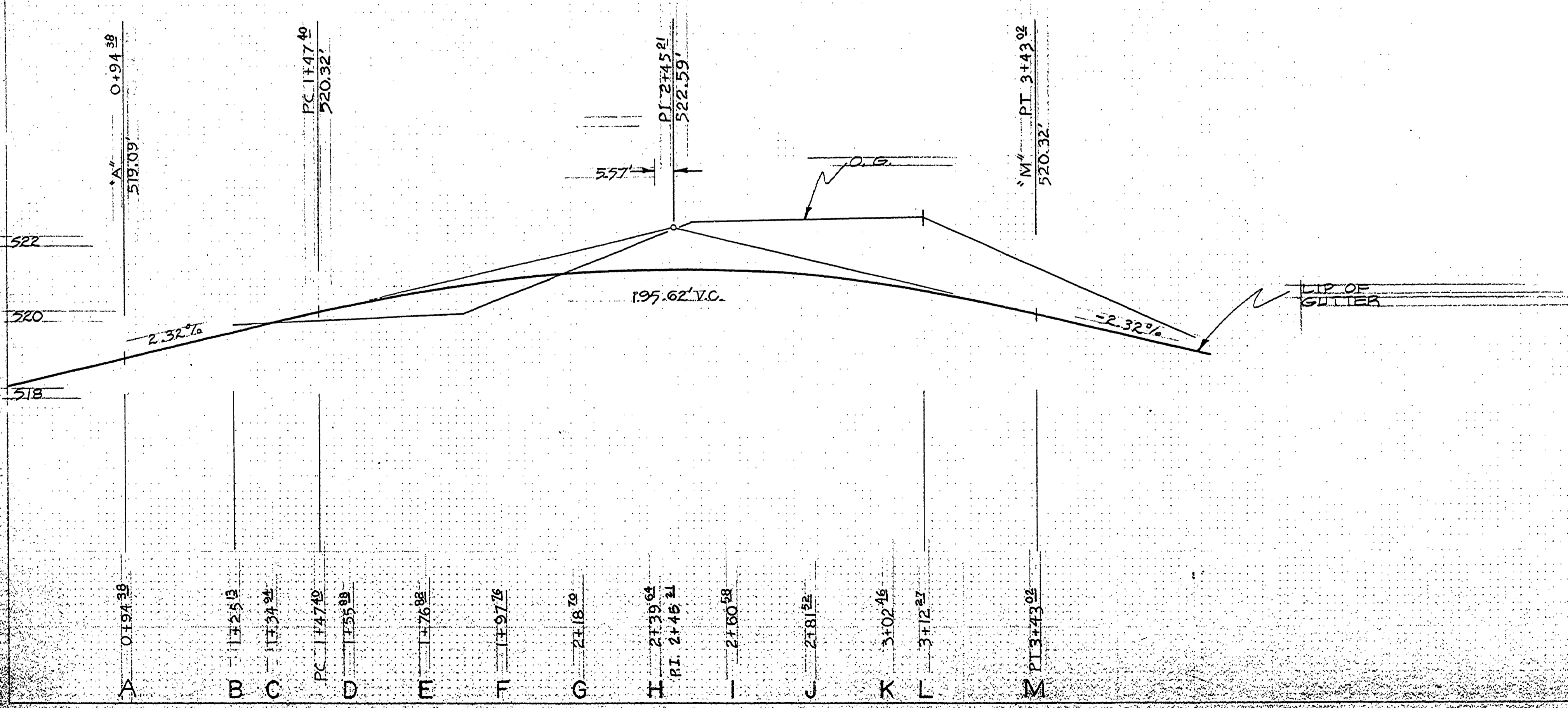


PLAN  
 SURVEYED, ALIGNED, CHECKED, RIGHT OF WAY CHECKED.  
 NOTE BOOK NO. \_\_\_\_\_

PROFILES  
 SURVEYED, CHECKED, B.M. NOTED, VERTICAL CURVES CHECKED.  
 NOTE BOOK NO. \_\_\_\_\_



**CUL-DE-SAC**  
 0 5 10 15 30 45  
 PLAN SCALE

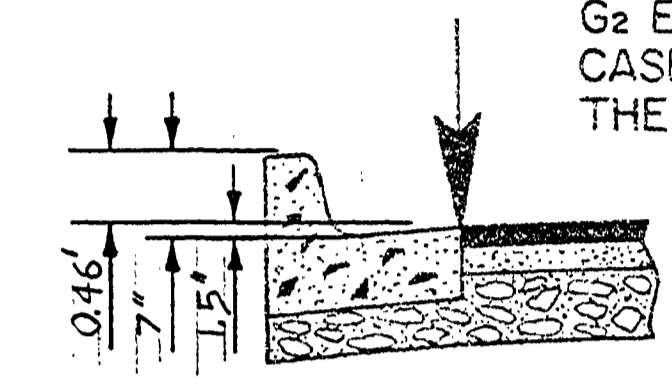
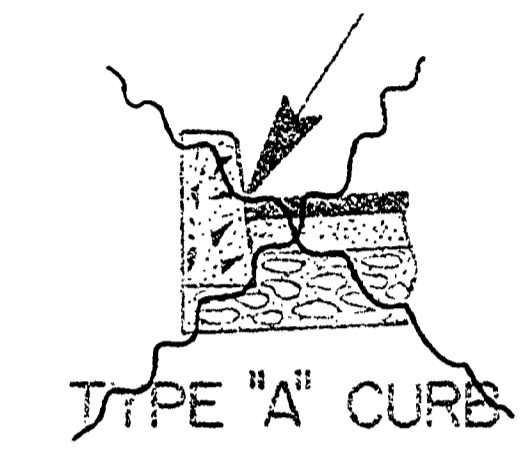


W	R <sub>1</sub>	Δ <sub>1</sub>	L <sub>1</sub>	R <sub>2</sub>	Δ <sub>2</sub>	L <sub>2</sub>	S <sub>2</sub>	L <sub>2</sub> '	X	AREA
35	35	45°34'20"	2784	40	271°08'40"	20.94	15°34'20"	10.87	53.56	5.150
35	40	44°02'55"	30.75	40	268°05'50"	20.94	14°02'55"	9.81	55.62	5.222
41	35	42°16'07"	25.82	40	264°32'14"	20.94	12°16'07"	8.57	50.45	5.123
41	40	40°51'55"	28.53	40	261°43'50"	20.94	10°51'55"	7.59	52.34	5.207

FILED  
 AUG 10 1987  
 COUNTY SURVEYOR  
 DOUGLAS COUNTY, ORE.

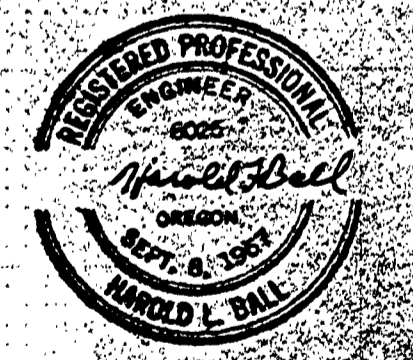
AREA FIGURES ARE FOR SHADED PORTION OF CUL-DE-SAC. (Ft<sup>2</sup>)

A	B	C	D	E	F	G	H	J	K	L	M	G <sub>1</sub>	G <sub>2</sub>
519.09	519.80	520.03	520.51	520.90	521.19	521.37	521.45	521.43	521.30	521.07	520.92	520.92	521.00

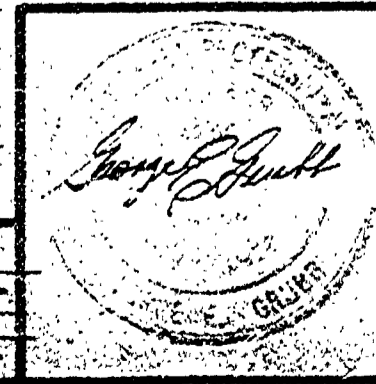


ELEVATIONS LISTED CORRESPOND TO LOCATIONS SHOWN

G<sub>2</sub> EXISTS ONLY IN THE CASE OF A V.C. W/G<sub>1</sub> AS THE P.I.



DOUGLAS COUNTY PUBLIC WORKS DEPT.  
**APPROVED**  
 DESIGNED: H.L. BELL  
 CHECKED: M.P.



WE=35 R=40 R=40  
 DESCRIPTION: ASPEN CT. #354B  
 PROJECT# \_\_\_\_\_ DATE: 12/76  
 DOUGLAS COUNTY RD. DEPT.  
 STANDARD CUL-DE-SAC LAYOUT  
 DATE: 1972 STD. DWG. 15