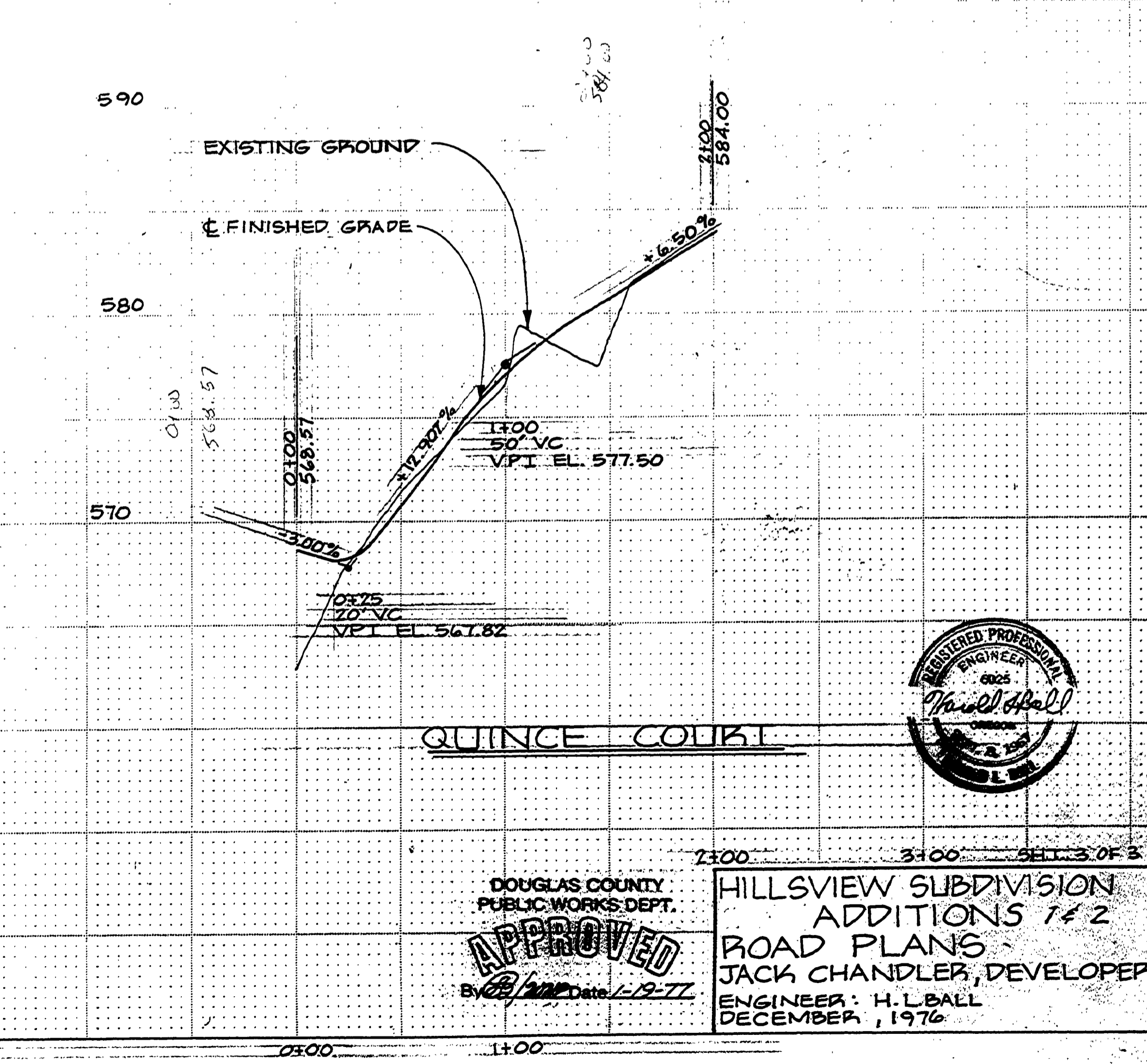
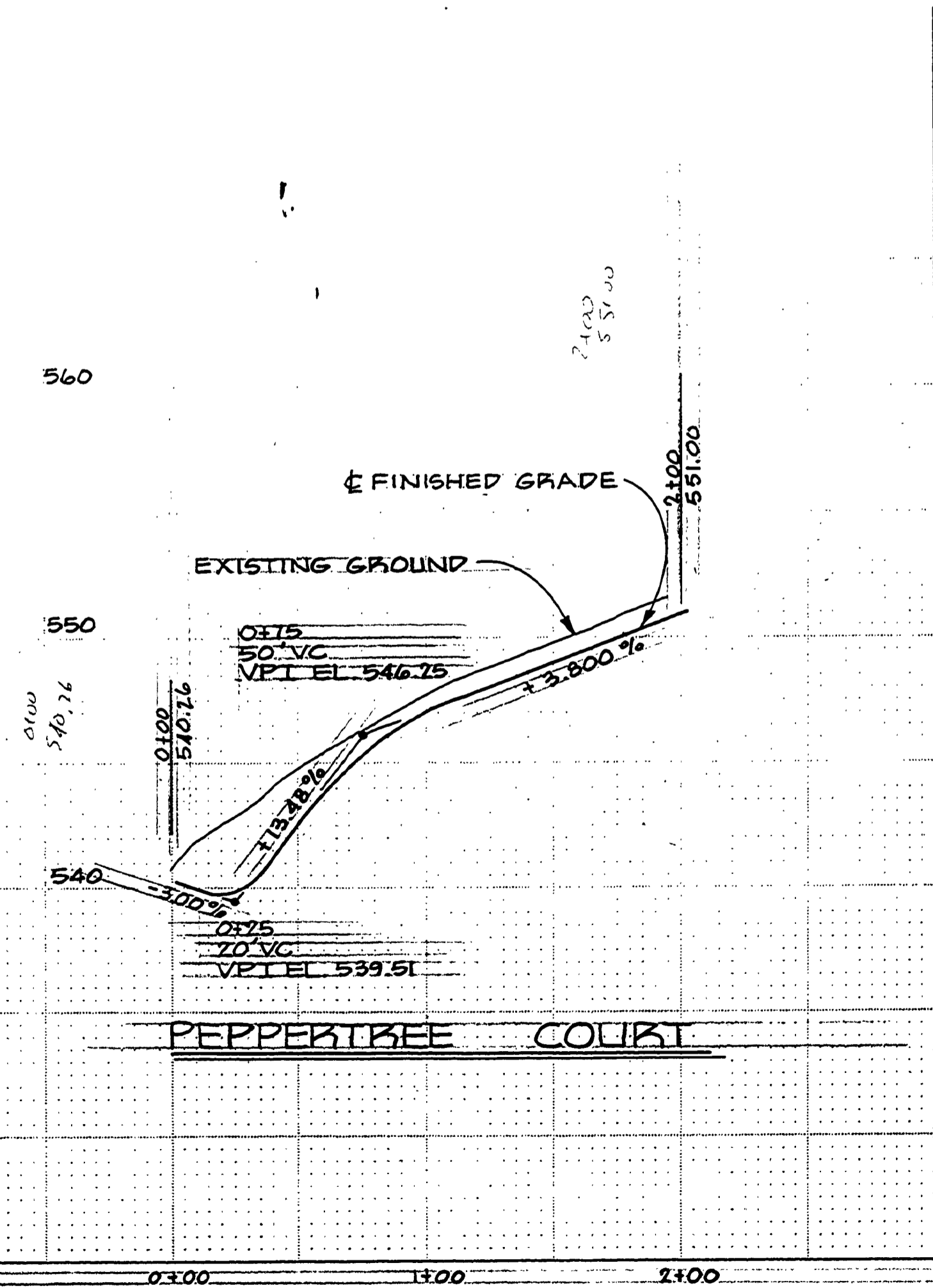
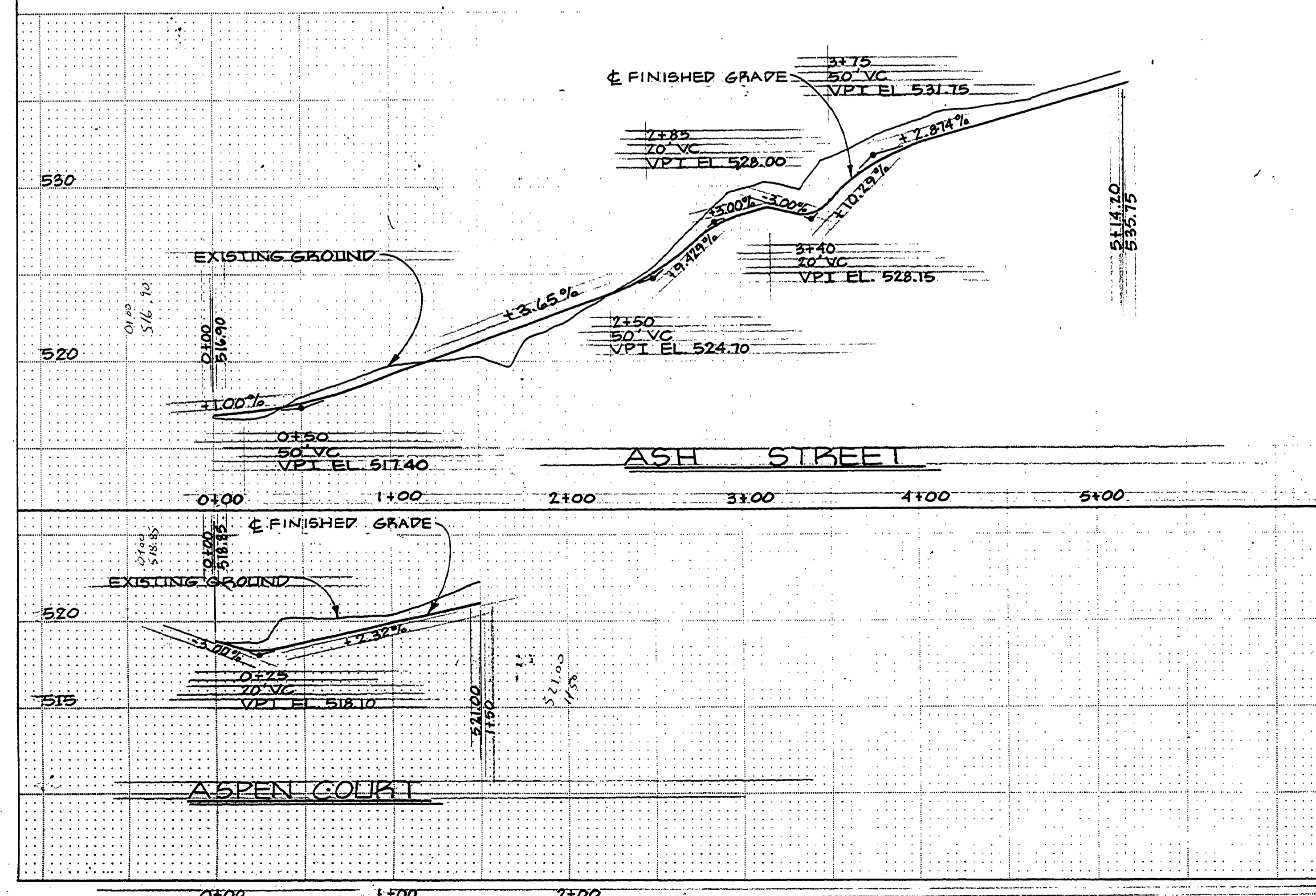
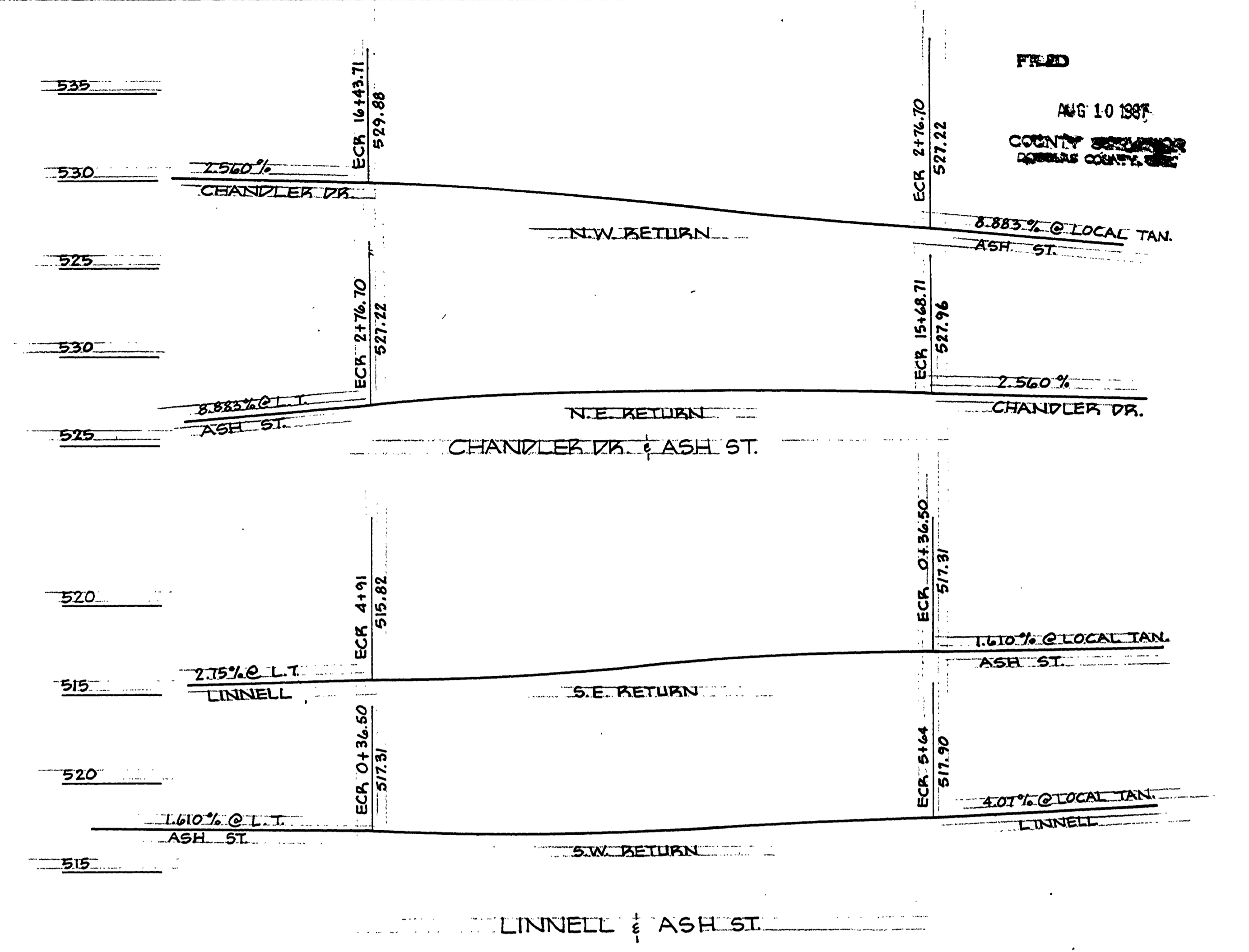
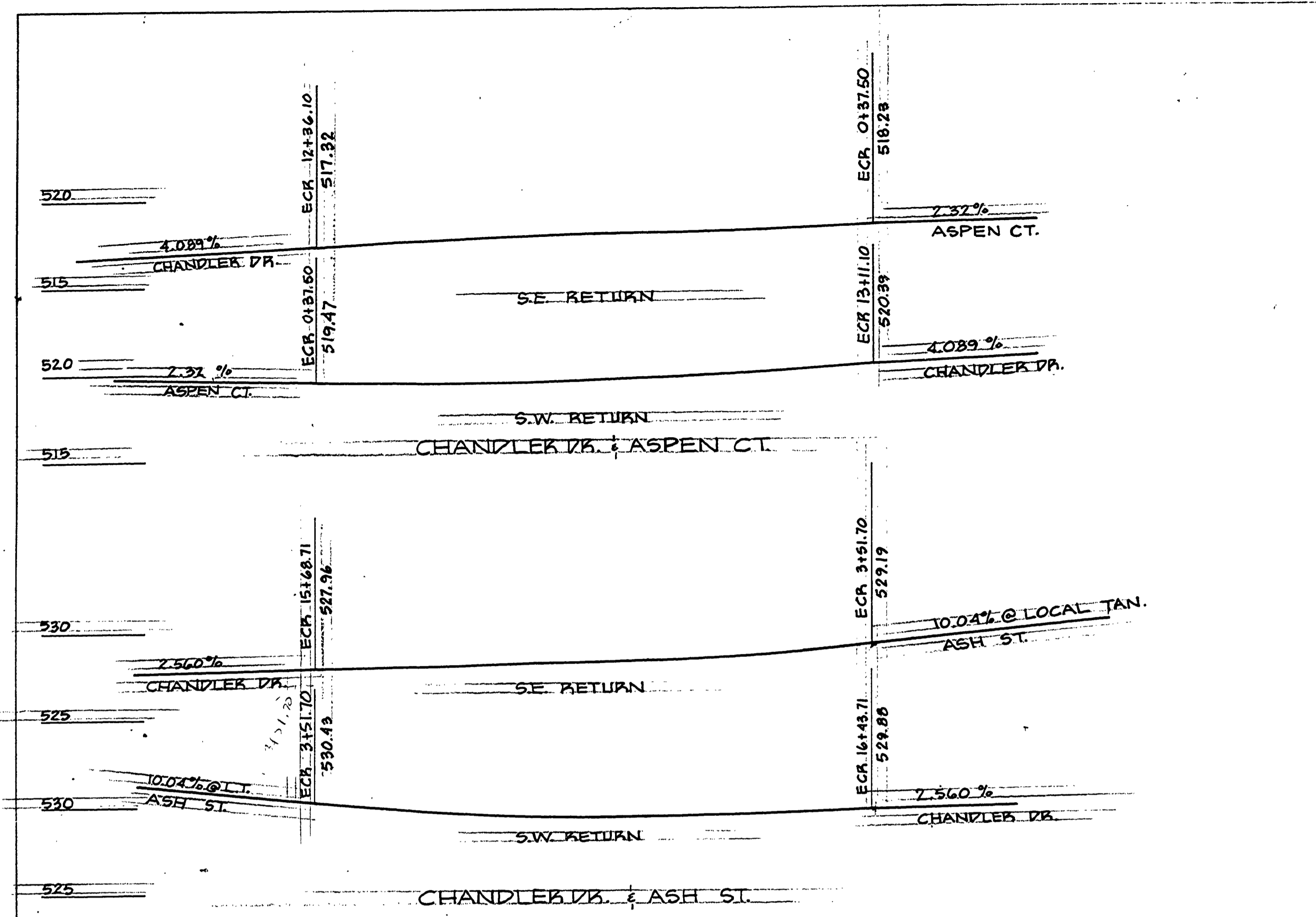


AS BUILT

FILED
AUG 10 1987
COUNTY ENGINEER
DOUGLAS COUNTY, NEB.



APPROVED
DOUGLAS COUNTY
PUBLIC WORKS DEPT.
HILLSVIEW SUBDIVISION
ADDITIONS 1 & 2
ROAD PLANS
JACK CHANDLER, DEVELOPER
ENGINEER: H.L. BALL
DECEMBER, 1976

00000026