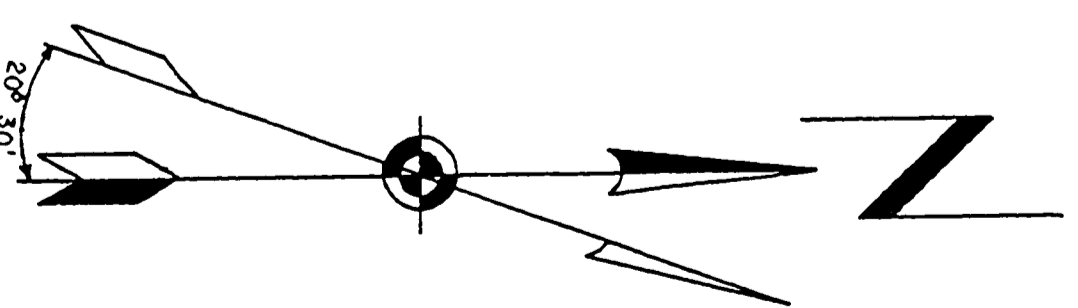
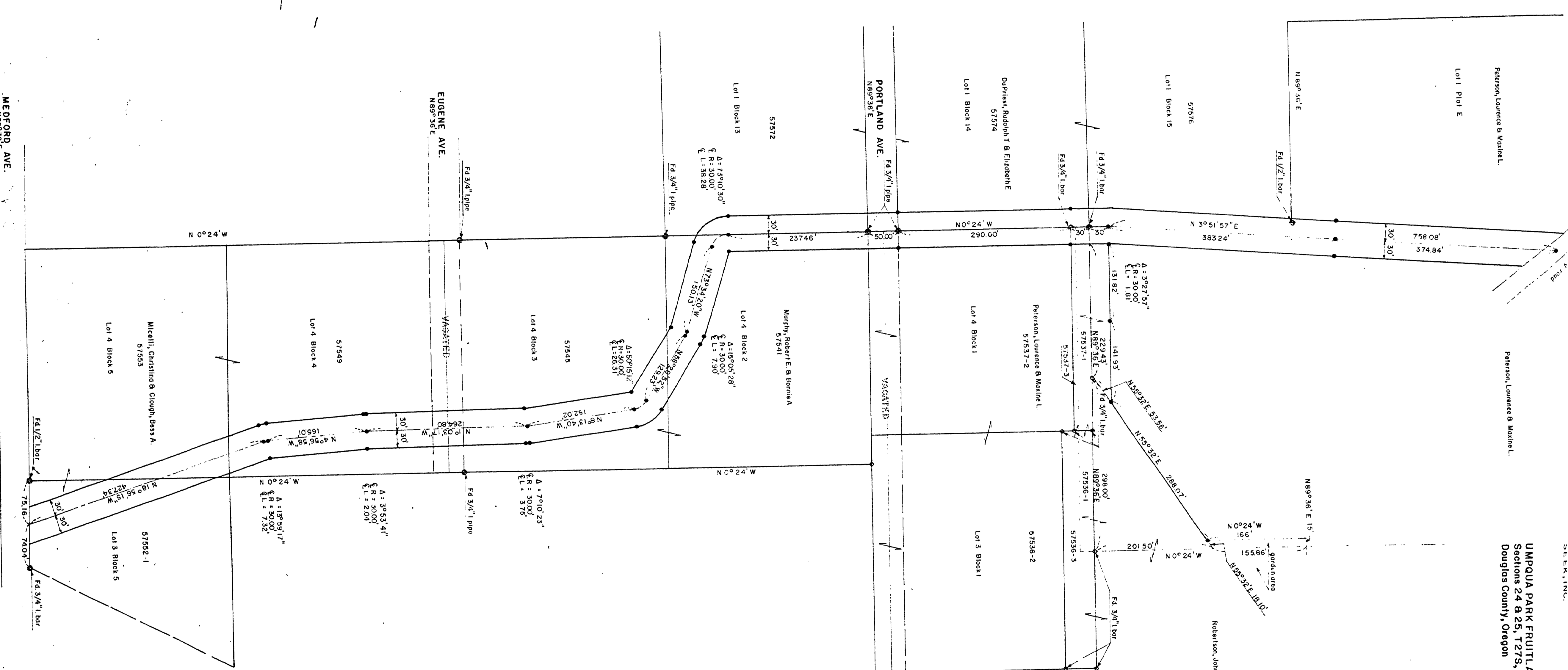


SEEM, INC.
 UMPQUA PARK FRUITLANDS, parts of PLATS 'D' & 'E',
 Sections 24 & 25, T27S, R6W, W.M.,
 Douglas County, Oregon



Scale, 1" = 100'
 • = 5/8" hub
 Bearings based on Umpqua Park Plat 'D'
 Douglas County Surveyor's File M-14-15



2/22/86 J.F.
 ORIGINALS FILED AS
 M. MAPS - ACCEPTED
 LARGE AS COUNTY ROAD
 FAIRHILL DRIVE ROAD # 353
 M.P. 0.00 - 0.39
 CRD # 353
 WILLIAM C. STILES
 427
 000000039

M 33 - 40