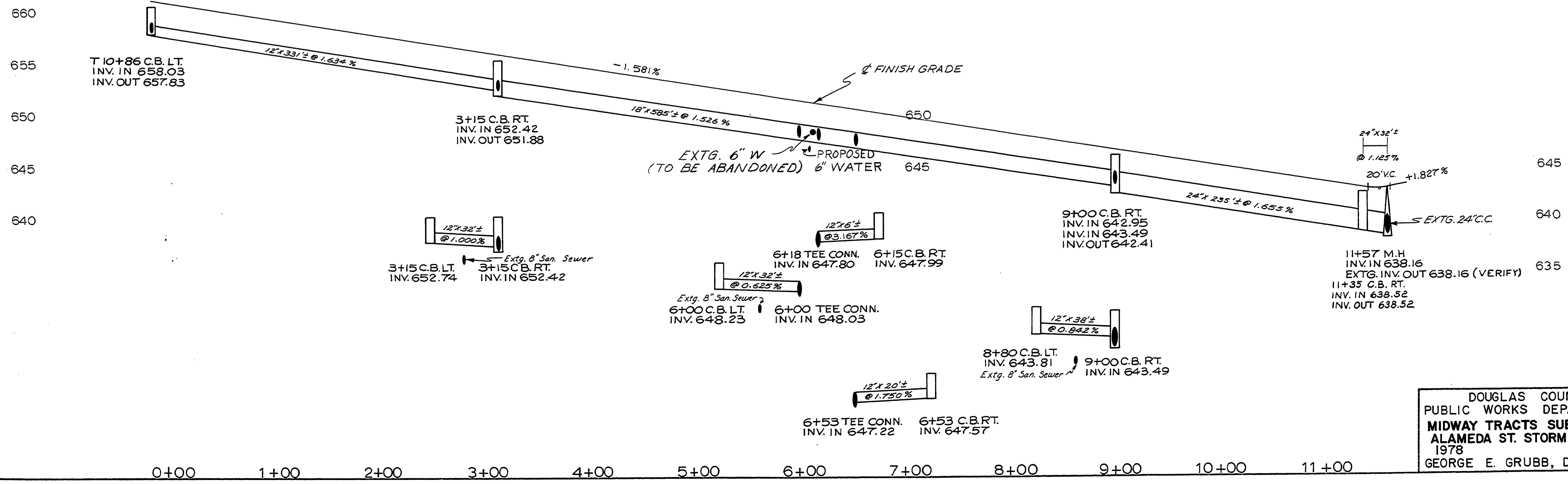
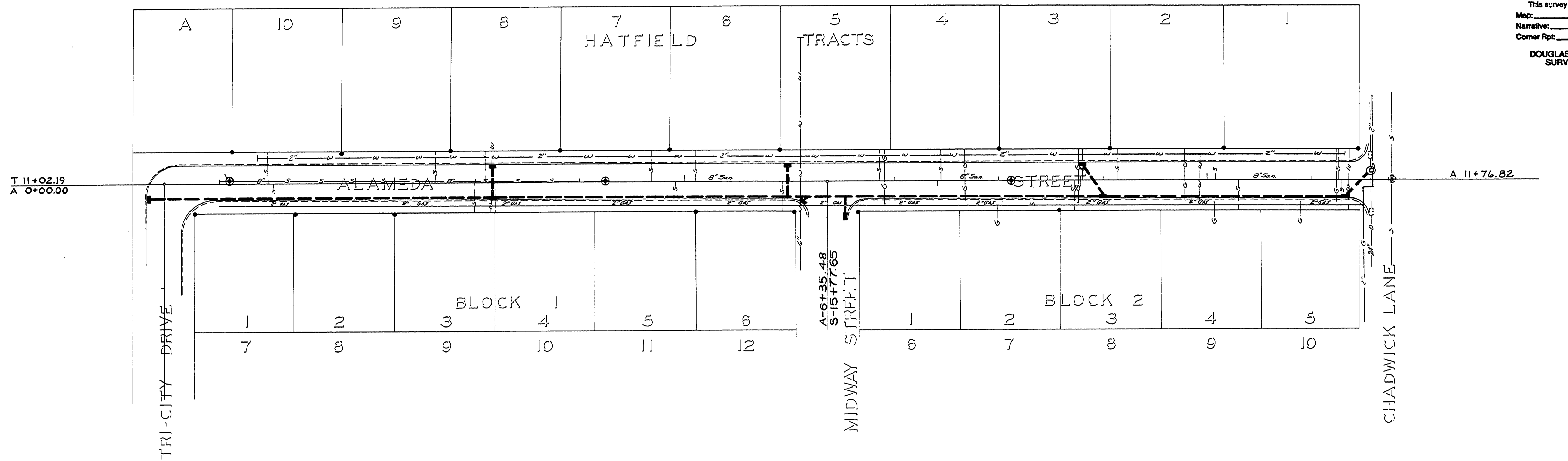


SEC. 5, 6, 7, 8 T 30 S R 5 W W.M.

FILED
 Date: 1-30-97 By: JP
 This survey consists of:
 Map:
 Narrative:
 Corner Ppt:
 DOUGLAS COUNTY
 SURVEYOR



DOUGLAS COUNTY
 PUBLIC WORKS DEPARTMENT
 MIDWAY TRACTS SUBDIVISION
 ALAMEDA ST. STORM DRAIN
 1978 SHT. 9
 GEORGE E. GRUBB, DIRECTOR

RD352E01