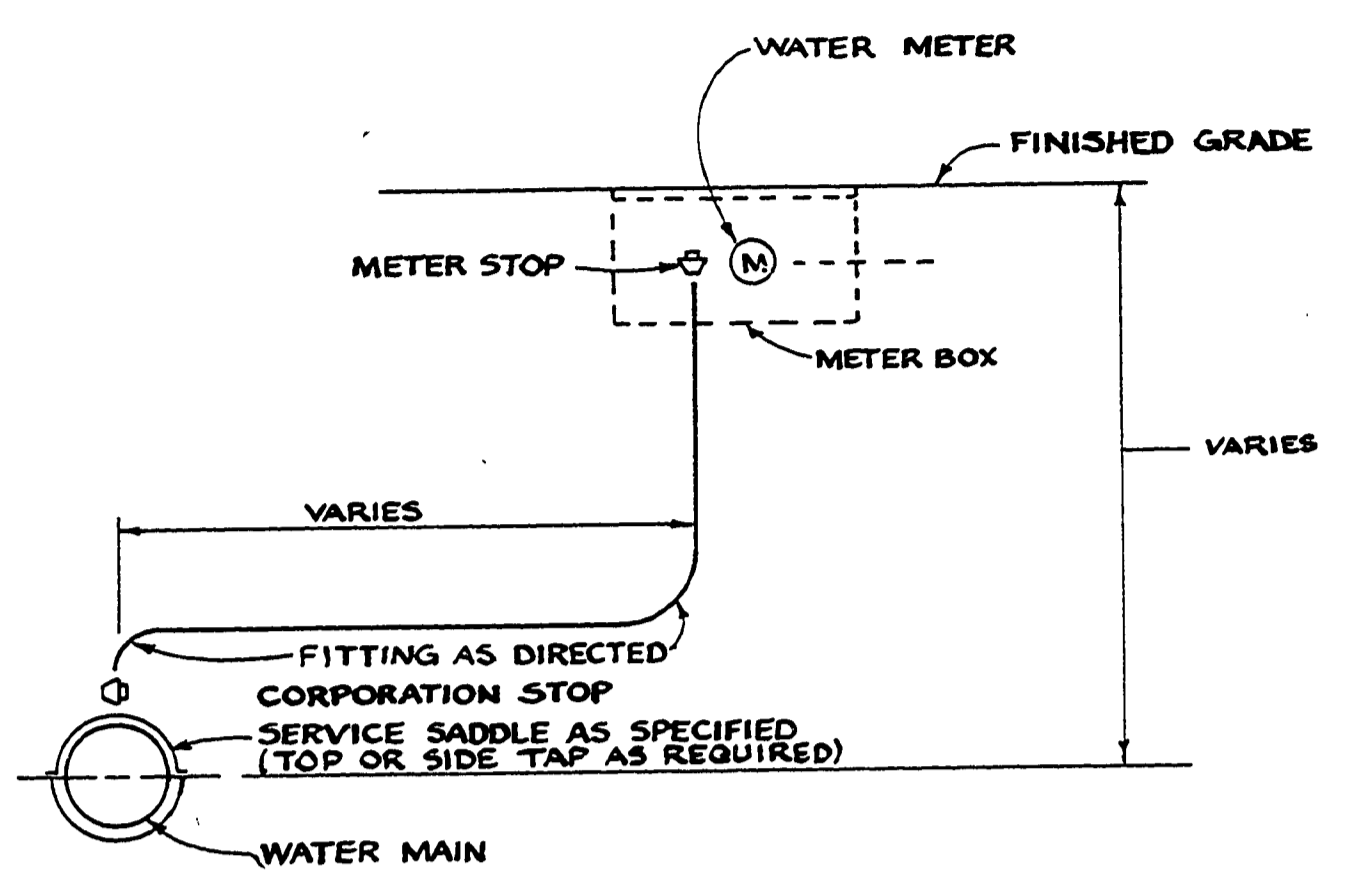
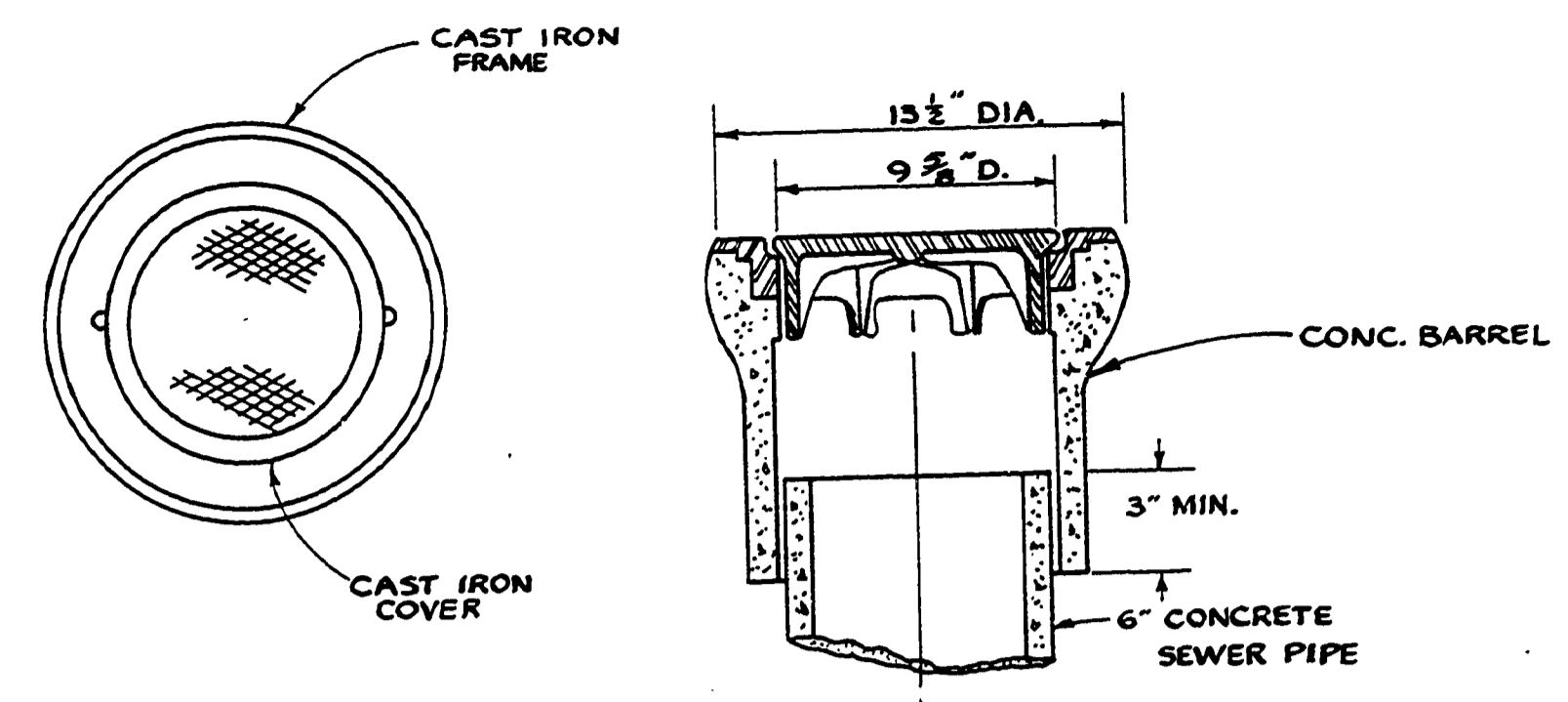
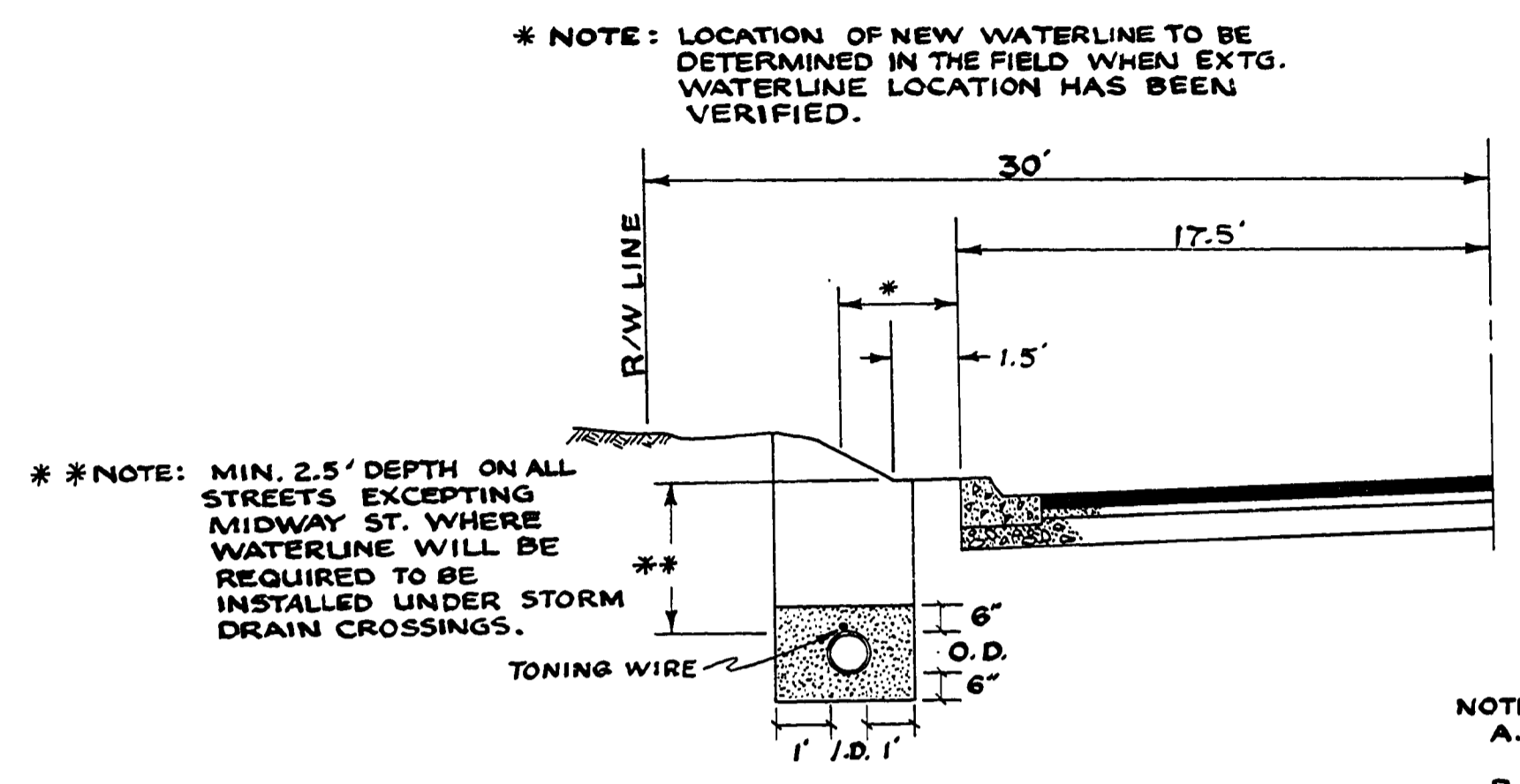


FILED
 Date: 1-30-97 by: JP
 This survey consists of:
 Map:
 Narrative:
 Corner Ppt:
 DOUGLAS COUNTY SURVEYOR

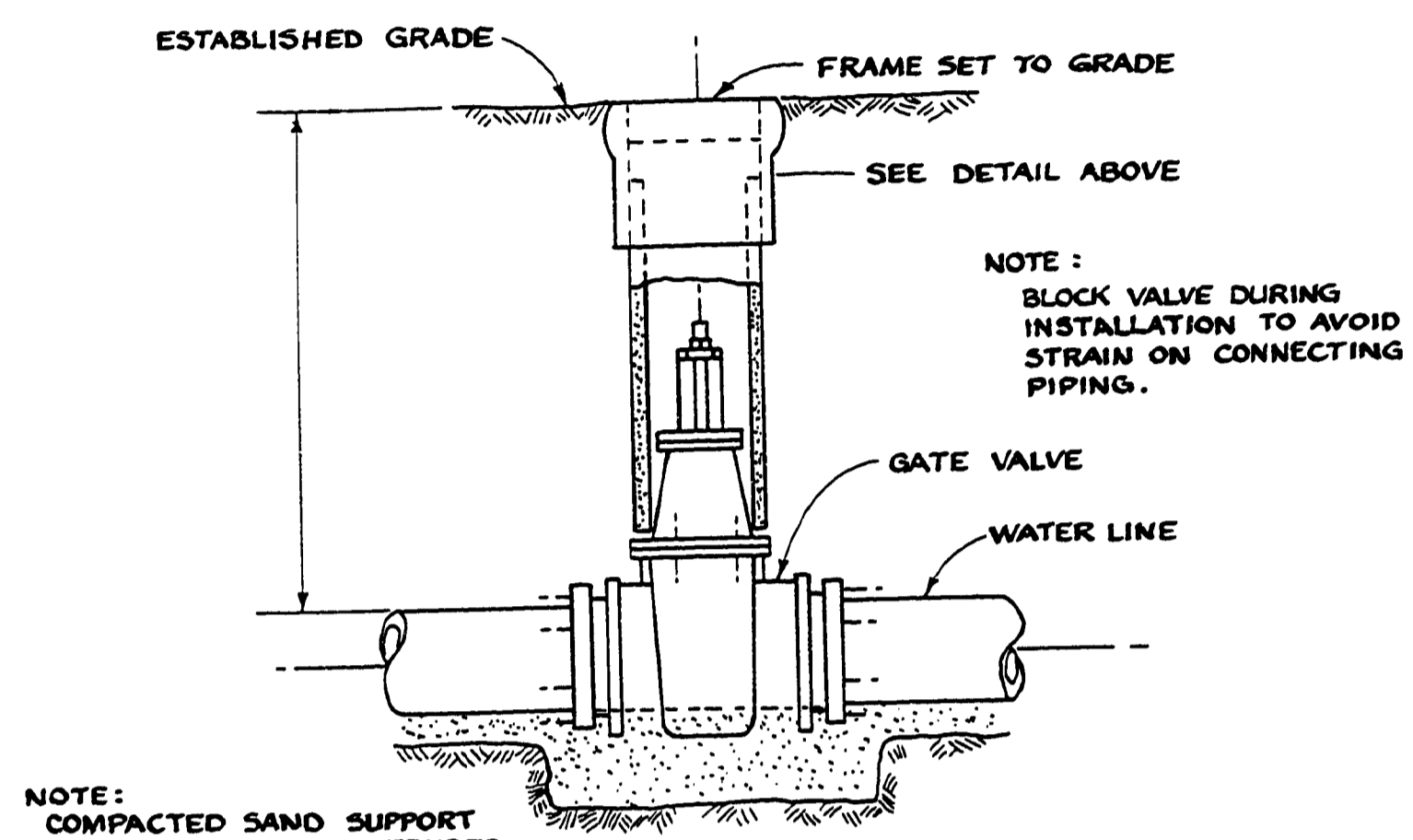


SERVICE CONNECTION DETAIL

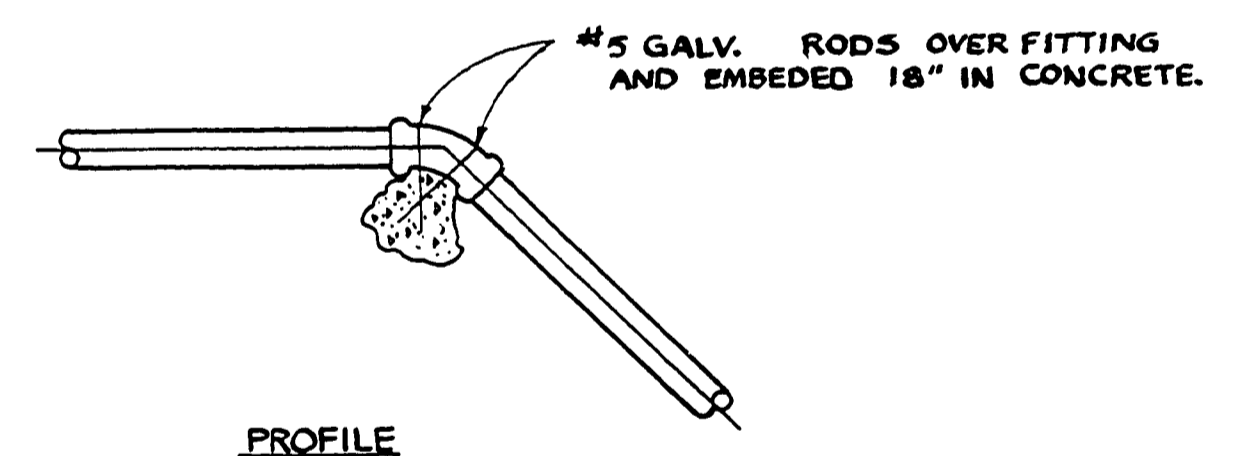
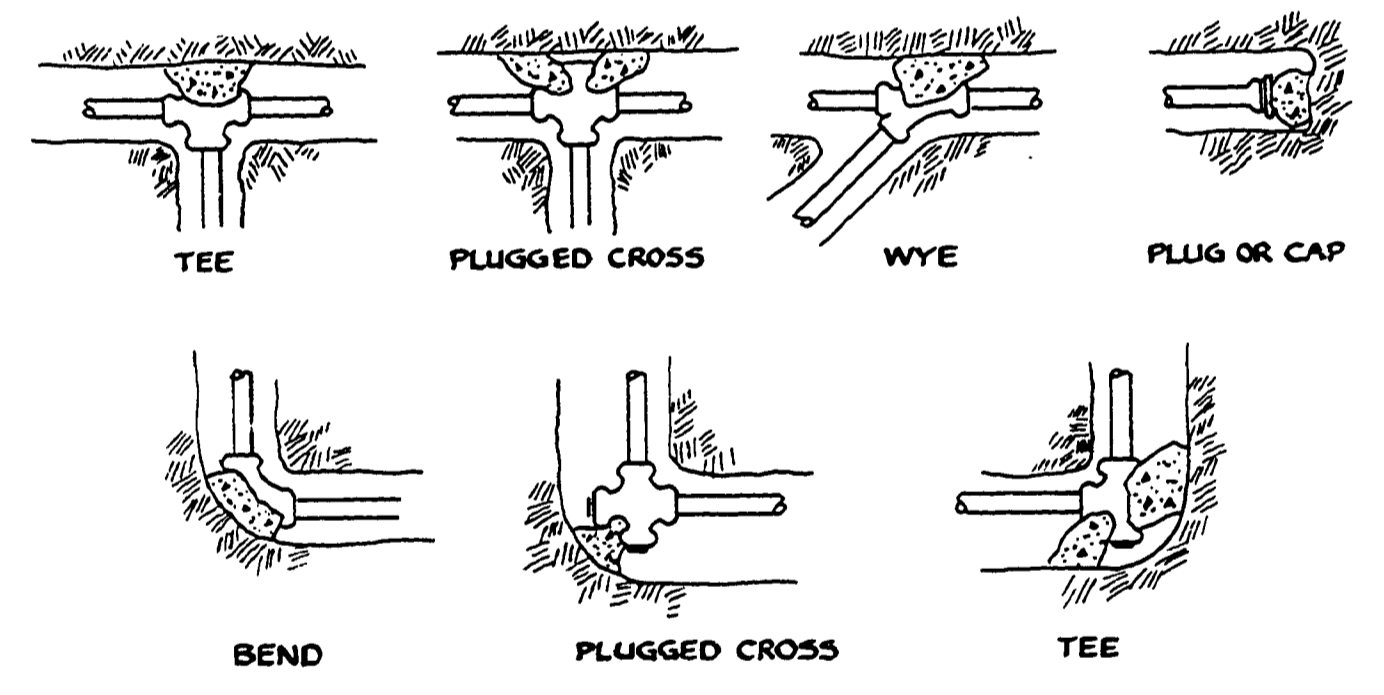


TYPICAL WATERLINE TRENCH

NOTES:
 A. BACKFILL MATERIAL IN UNIMPROVED AREAS SHALL BE NATIVE MATERIAL.
 B. BACKFILL MATERIAL IN IMPROVED AREAS SHALL BE APPROVED GRANULAR MATERIAL.



GATE VALVE AND VALVE BOX DETAIL



1. KEEP CONCRETE CLEAR OF JOINT AND JOINT ACCESSORIES.
 2. THRUST BLOCKS FOR VERTICAL UP-BENDS SHALL BE THE SAME AS FOR HORIZONTAL BENDS.

FITTING SIZE	VOLUME OF THRUST BLOCK IN CU. YDS.	
	30° BEND	45° BEND
4	0.5	0.5
6	1.3	1.0
8	2.6	1.4

NOTE: ALL BENDS LESS THAN 45° USE 1 CY. MIN.
 ABOVE VOLUMES BASED ON TEST PRESSURE OF 150 PSI. AND THE WEIGHT OF CONCRETE = 4050 lbs/cu. yd.. TO COMPUTE VOLUMES FOR DIFFERENT TEST PRESSURES, USE THE FOLLOWING EQUATION:
 VOLUME = (TEST PRESSURE / 150) X (TABLE VALUE).

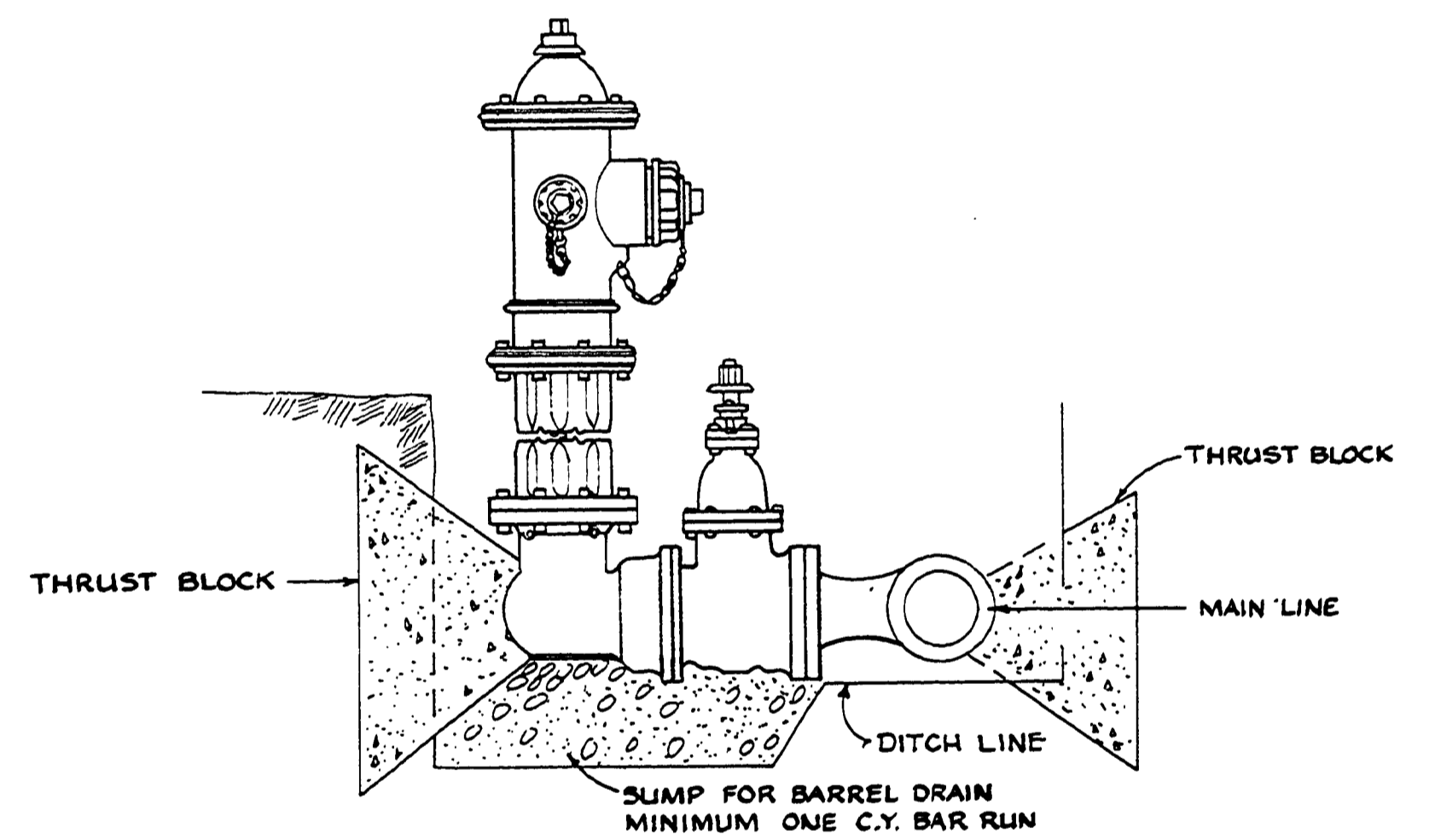
VERTICAL BEND ANCHOR BLOCK DETAIL

NOTES:
 1. CONCRETE THRUST BLOCKING TO BE POURED AGAINST UNDISTURBED EARTH.
 2. KEEP CONCRETE CLEAR OF JOINT AND ACCESSORIES.
 3. CENTER OF GRAVITY OF THRUST BLOCK SHALL BE APPLIED AT 1/2 OF PIPE.

FITTING SIZE	BEARING AREA OF THRUST BLOCKS IN SQ. FT.						
	TEE, WYE PLUG OR CAP	90° BEND PLUGGED CROSS	TEE PLUGGED ON RUN		45° BEND	22-1/2° BEND	11-1/4° BEND
			A ₁	A ₂			
4	1.0	1.4	1.9	1.4	1.0	—	—
6	2.1	3.0	4.3	3.0	1.6	1.0	—
8	3.8	5.3	7.6	5.4	2.9	1.5	1.0

NOTE: ABOVE BEARING AREAS BASED ON TEST PRESSURE OF 150 P.S.I. AND AN ALLOWABLE SOIL BEARING STRESS OF 2000 LBS/SQ. FT. TO COMPUTE BEARING AREAS FOR DIFFERENT TEST PRESSURES AND SOIL BEARING STRESSES, USE THE FOLLOWING EQUATION: BEARING AREA = (TEST PRESSURE / 150) X (2000 / SOIL BEARING STRESS) X (TABLE VALUE).

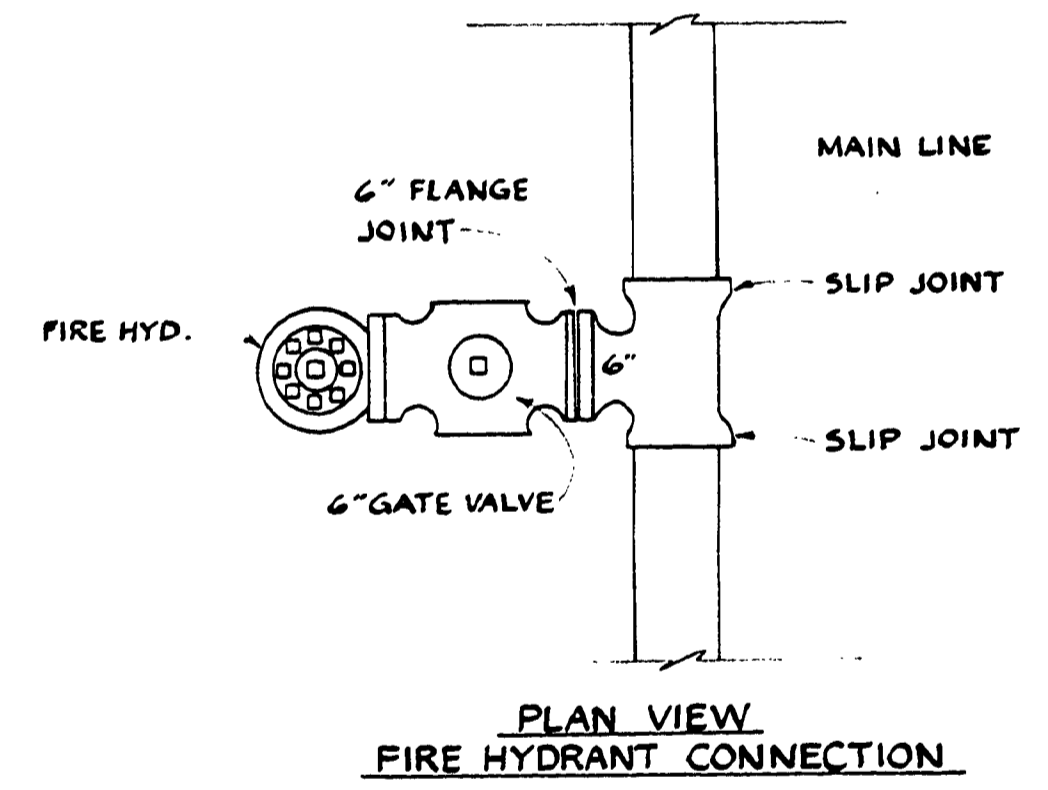
THRUST BLOCK DETAIL



SIDE VIEW DRY BARREL FIRE HYDRANT

THE HYDRANT SHALL BE 3-WAY WITH TWO 2 1/2" HOSE NOZZLES AND ONE 4" PUMPER NOZZLE, AND SHALL HAVE SAFETY FLANGE AND STEM. INSTALLATION TO BE IN ACCORDANCE WITH TRY-CITY MARSHALL REGULATIONS.

FIRE HYDRANT DETAIL



PLAN VIEW FIRE HYDRANT CONNECTION

SURVEYED	DESIGNED	DRAFTED	REVIEWED	BOOK	DOUGLAS COUNTY PUBLIC WORKS DEPARTMENT
	W. ROGERS	JW	W. POLAND		MIDWAY TRACTS SUBDIVISION WATERLINE TYPICAL SHT.
					1978
					GEORGE E. GRUBB, DIRECTOR

RD352WAT