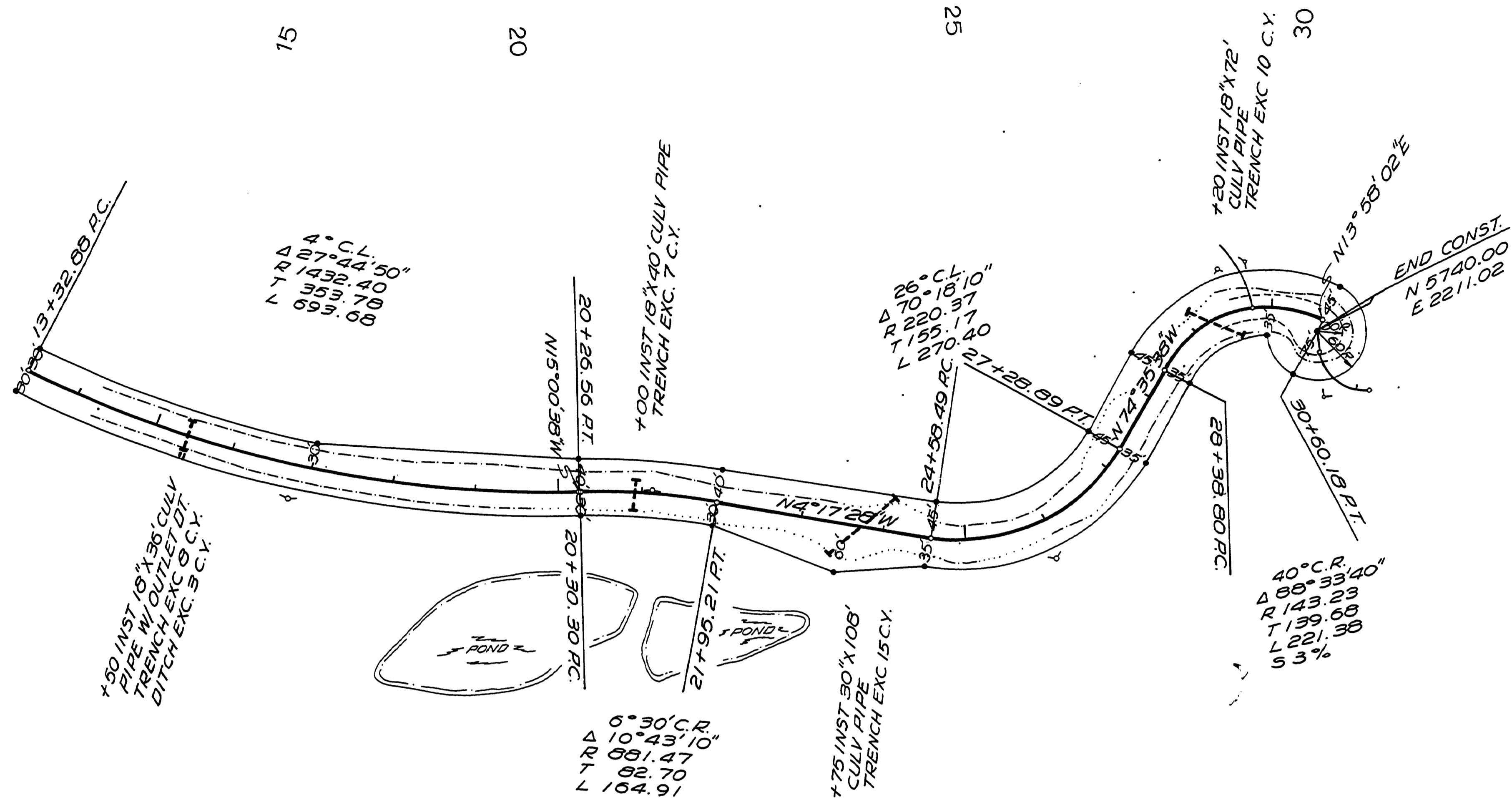
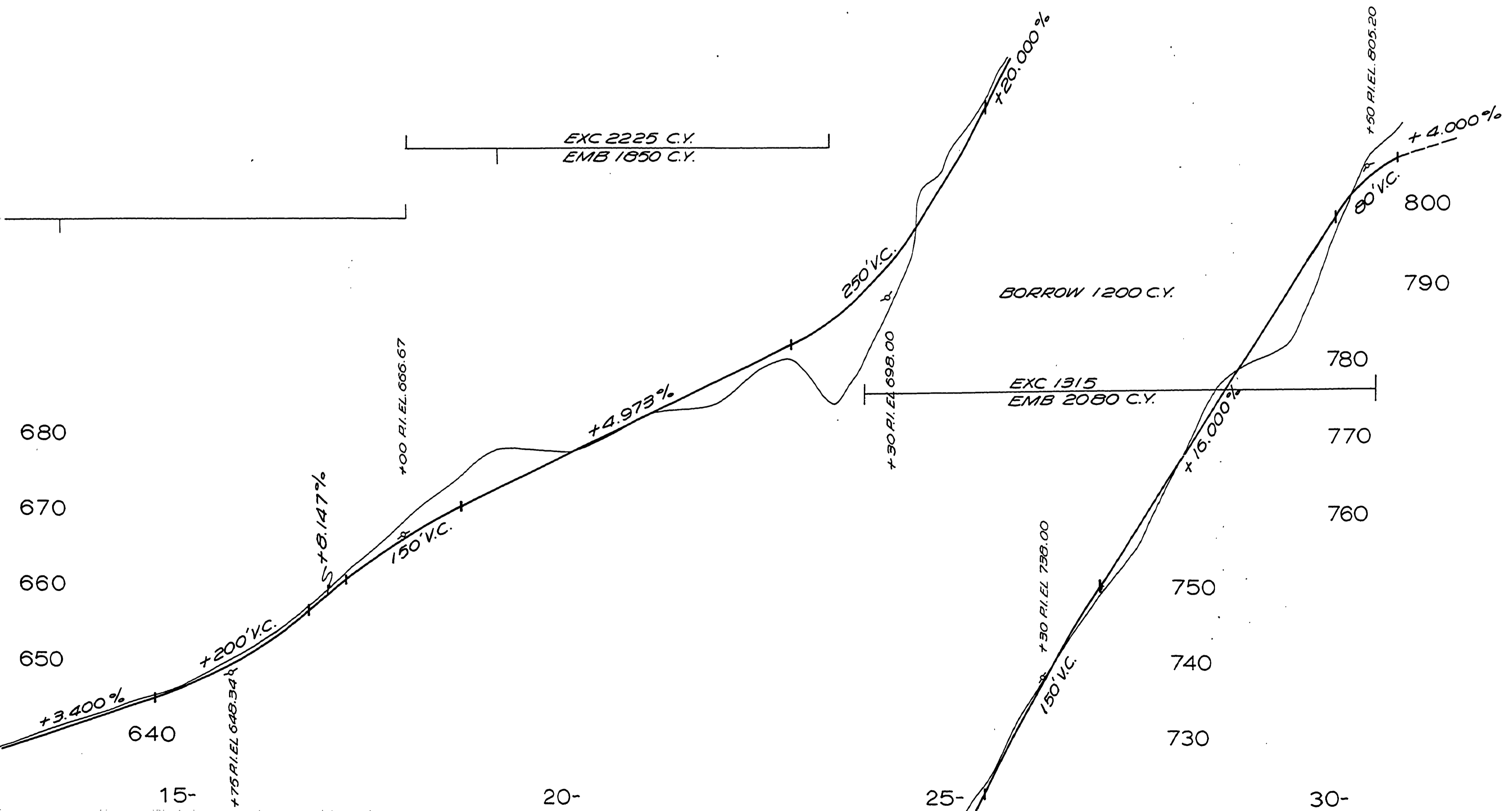


525 T275 R7W W.M.



SURVEY REFERENCE:  
 THE N.W. COR. OF  
 THE S.W. 1/4 OF THE N.E. 1/4  
 SEC 25, T275, R7W W.M.  
 N 6670.98  
 E 1598.43



BULHOES SUBDIVISION  
 NANDY DRIVE CO RD #336  
 HAROLD BALL P.E.  
 MAY 1972 SH 2 OF 2

00320059

M.P. 0.32 - 0.52

C.R. # 336

MAY 1972  
 SH. 2 OF 2 (66)